



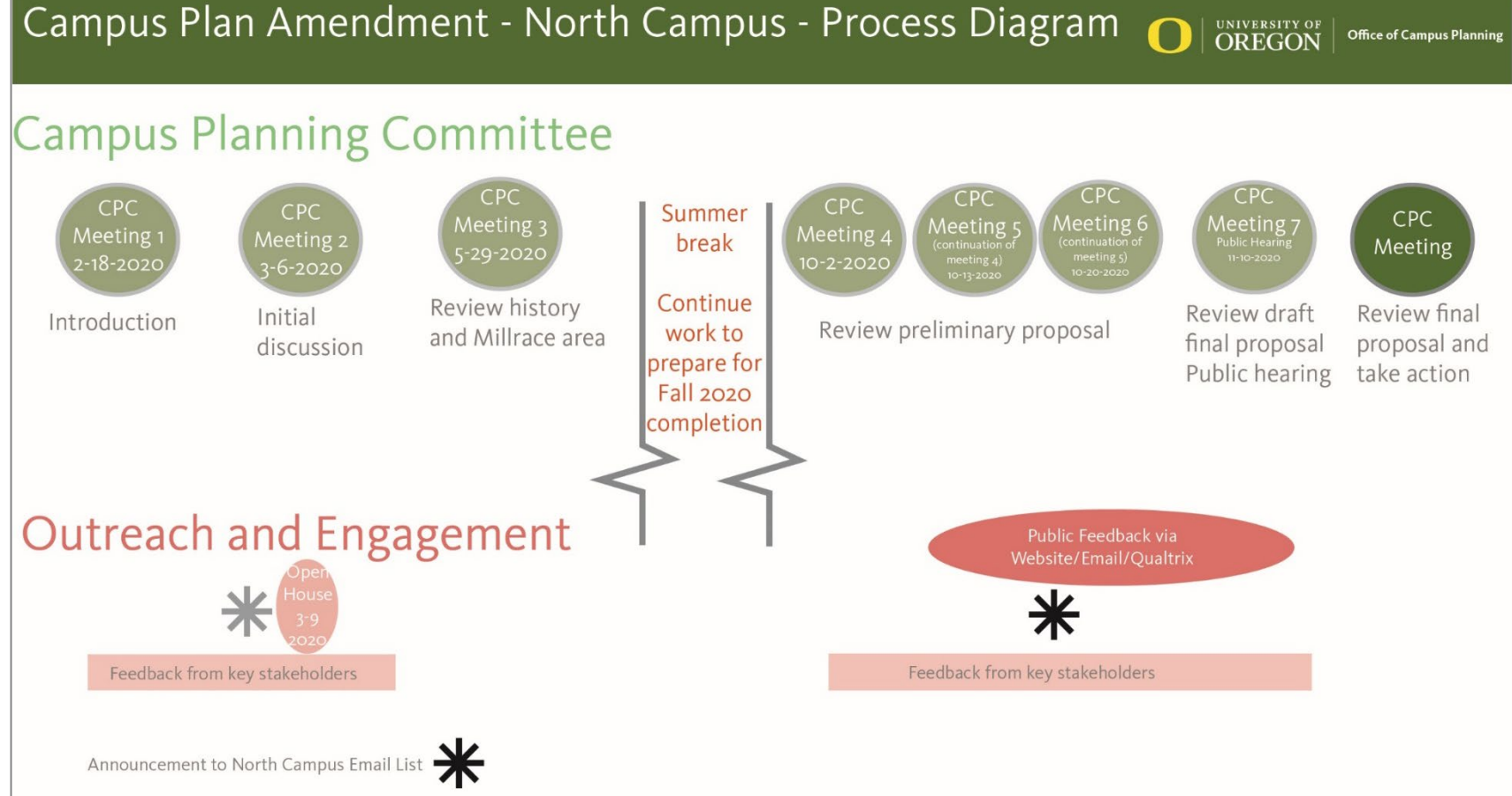
- Overview
- Context
- Amendment Review



- 2-18-2020 CPC Meeting 1
- 2-25-2020 Academic Leadership Team Meeting
- 2-26-2020 E-update sent to CUP mailing list
- 3-6-2020 CPC Meeting 2
- 3-9-2020 Open House (EMU Lobby)
- 4-2-2020 Chiefs of Staff Meeting
- 5-29-2020 CPC Meeting 3

COVID / SUMMER BREAK

- 10-2-2020 CPC Meeting 4
- 10-9-2020 Public Hearing notice sent
- 10-13-2020 CPC Meeting 5
- 10-14-2020 E-update sent to CUP mailing list
- 10-20-2020 CPC Meeting 6
- 10-26-2020 Public Hearing notice in Daily Emerald
- 11-4-2020 Around the O article
- 11-10-2020 CPC Meeting 7 / Public Hearing

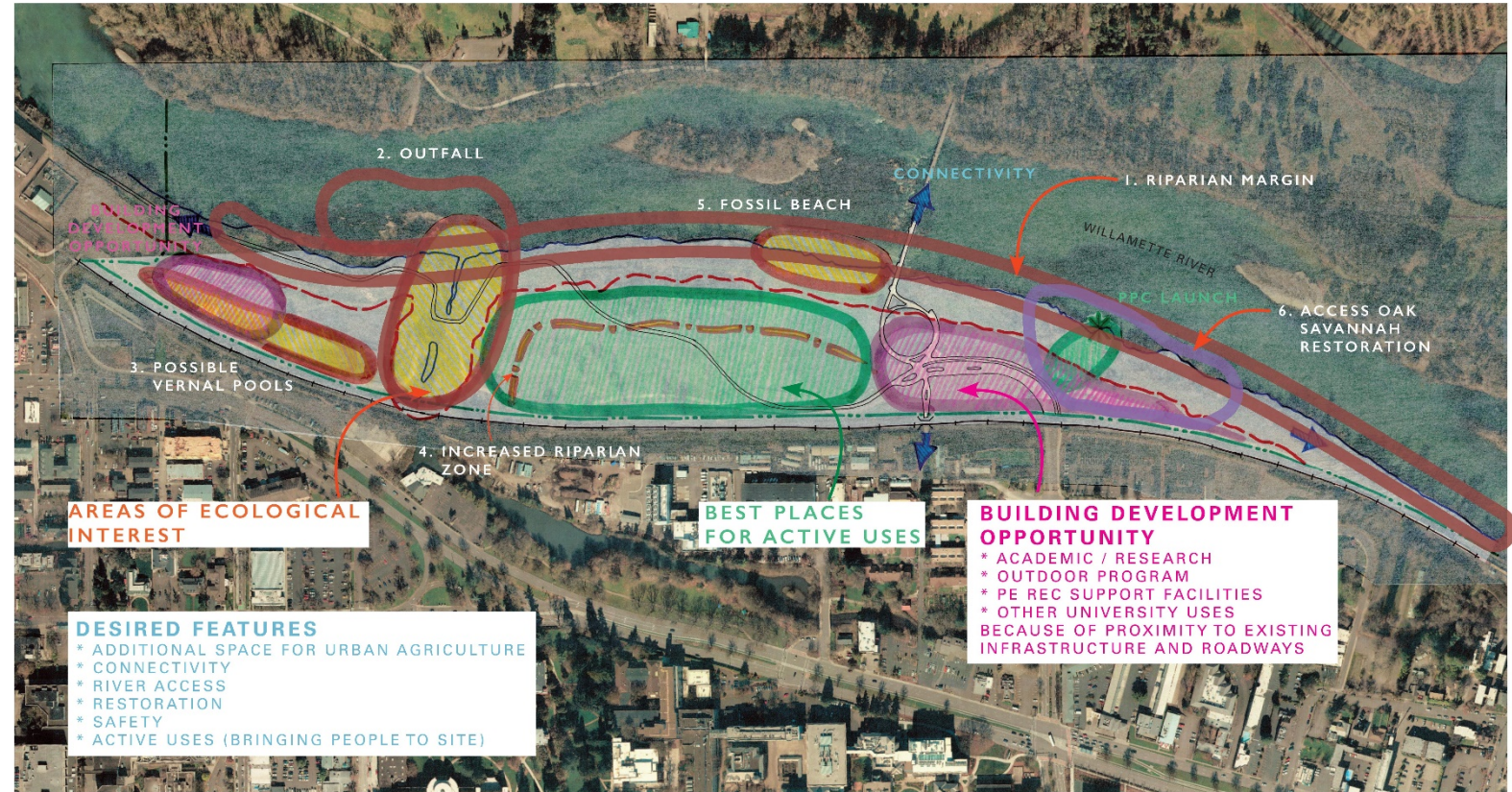


Internal (UO)

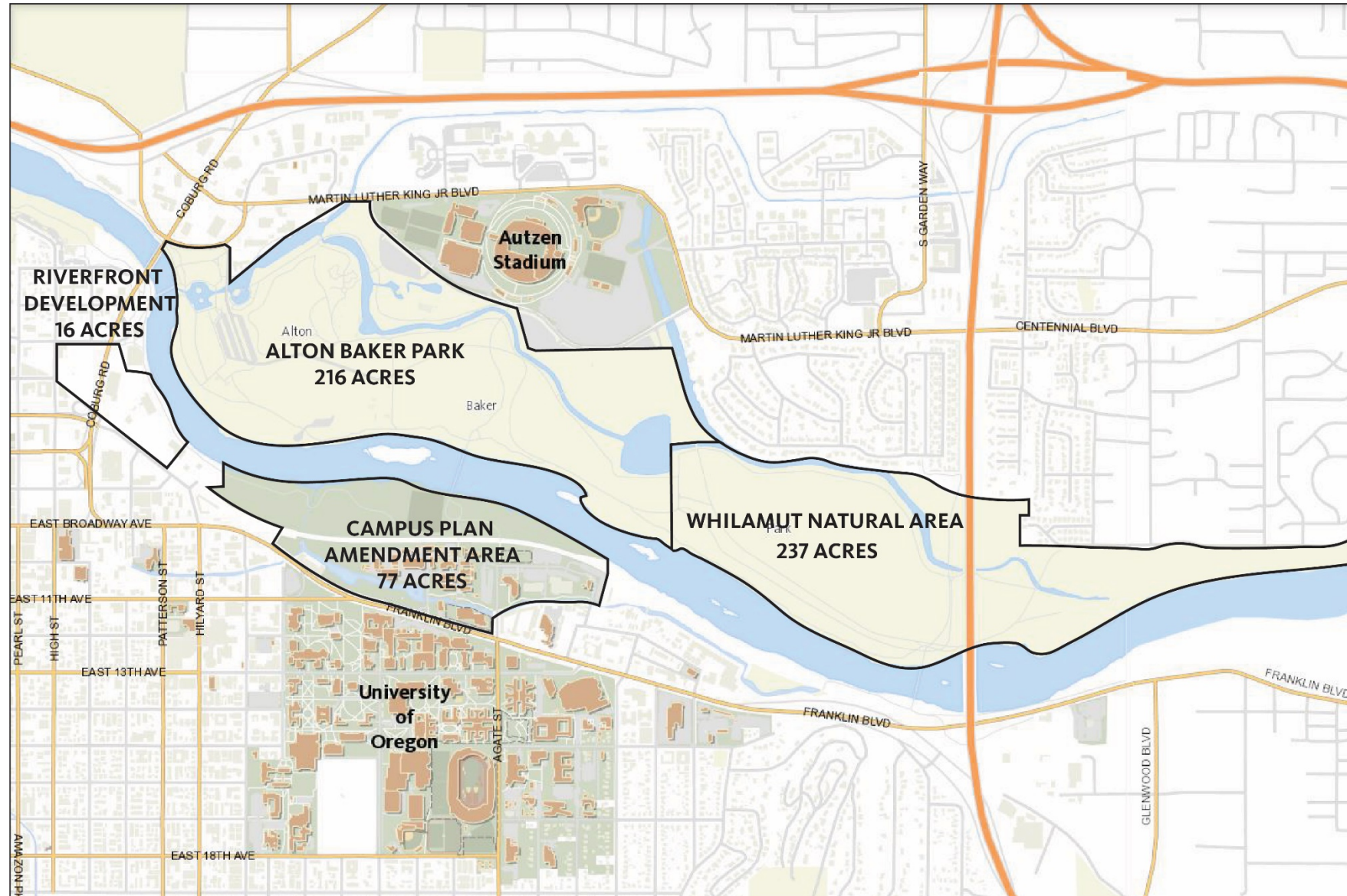
- May 5, 2016: Scoping Phase - Campus Planning Committee
- May 16, 2016: Scoping Phase - Campus Planning Committee
- August 4, 2016: Scoping Phase - College of Design Faculty/Landscape Focus
- October 26, 2016: Scoping Phase- PE & REC, Club Sports
- October 11, 2016: Scoping Phase - Office of Vice President for Research and Innovation
- October 27, 2016: Scoping Phase- Presentation to College of Design Faculty
- July 6, 2017: Outdoor Program Focus Group
- July 6, 2017: Physical Education and Recreation Focus Group
- July 12, 2017: Ecology Focus Group
- July 26, 2017: Ecology Focus Group
- August 29, 2017: Combined Focus Groups (Ecology/Physical Education and Recreation/Outdoor Program)
- September 6, 2017: Art Department/Product Design/Urban Farm
- September 14, 2017: Campus Planning and Facilities Management Units
- October 9, 2017: Office of Vice President for Research and Innovation
- October 10, 2017: Campus Planning Committee Meeting
- October 17, 2017: Campus Planning and Facilities Management Units
- October 19, 2017: Combined Focus Groups (Ecology/Physical Education and Recreation/Outdoor Program/Members from Community Stakeholder Group)
- October 27, 2017: Campus Planning Committee Meeting
- November 8, 2017: Community Open House
- November 8, 2017: Neighborhood Meeting
- November 28, 2017: Campus Planning Committee Review
- December 2017: Space Advisory Group
- December 11, 2017: UO Executive Leadership Team
- January 11, 2018: Community Open House
- January 11, 2018: Neighborhood Meeting
- February 14, 2018: University Senate Meeting
- February 23, 2018: Student Recreation Center Student Advisory Board Meeting
- May & June 2018: Follow-up meetings with interested or concerned Faculty, Students, and Staff

External (Community)

- June 2, 2016: Scoping Phase – Community Meeting
- Oct 24, 2016: Scoping Phase – City Planning and Development
- August 9, 2017: Community Stakeholder Group
- September 13, 2017: Community Stakeholder Group
- October 12, 2017: City Active Transportation Committee
- October 19, 2017: Combined Focus Groups (Ecology/Physical Education and Recreation/Outdoor Program/Members from Community Stakeholder Group)
- November 2, 2017: City Planning and Development
- November 7, 2017: LTD Board Meeting
- November 8, 2017: River Districts Fall Meeting
- November 8, 2017: Community Open House
- November 8, 2017: Neighborhood Meeting
- December 6, 2017: Fairmount Neighborhood Association
- January 5, 2018: City Planning and Development
- January 11, 2018: Community Open House
- January 11, 2018: Neighborhood Meeting
- January & February 2018: Meetings with City executive leadership and elected officials
- April 6, 2018: Chamber of Commerce Local Government Affairs Council
- June 14, 2018: Willamette Riverkeeper (Eugene/Springfield)
- June 20, 2018: McKenzie River Trust
- June 20, 2018: Whilamut Natural Area CPC



FEEDBACK SUMMARY DIAGRAM
NORTH CAMPUS CONDITIONAL USE PERMIT PROJECT



Context



Riverfront Development

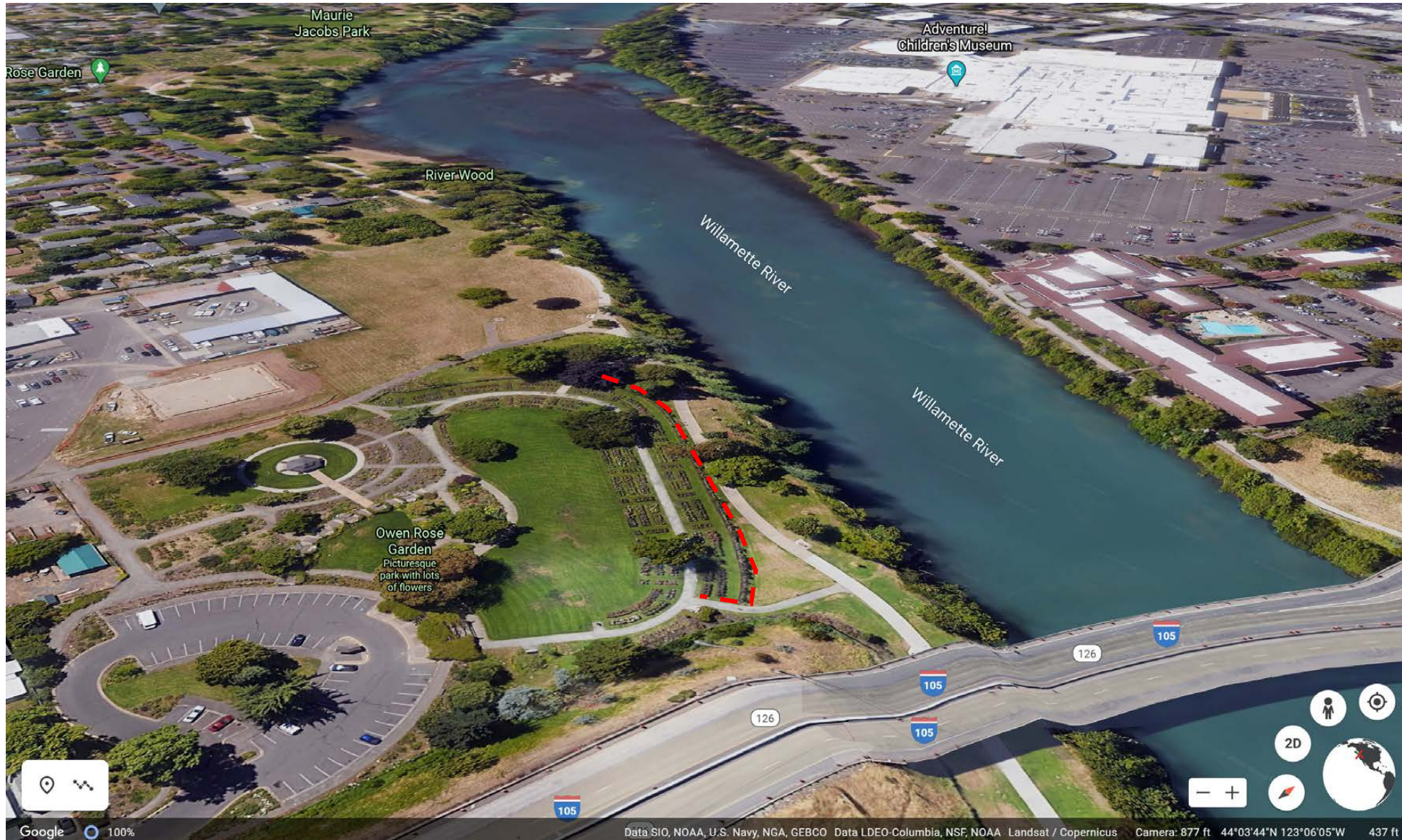
Riverfront Park





06/24/2017

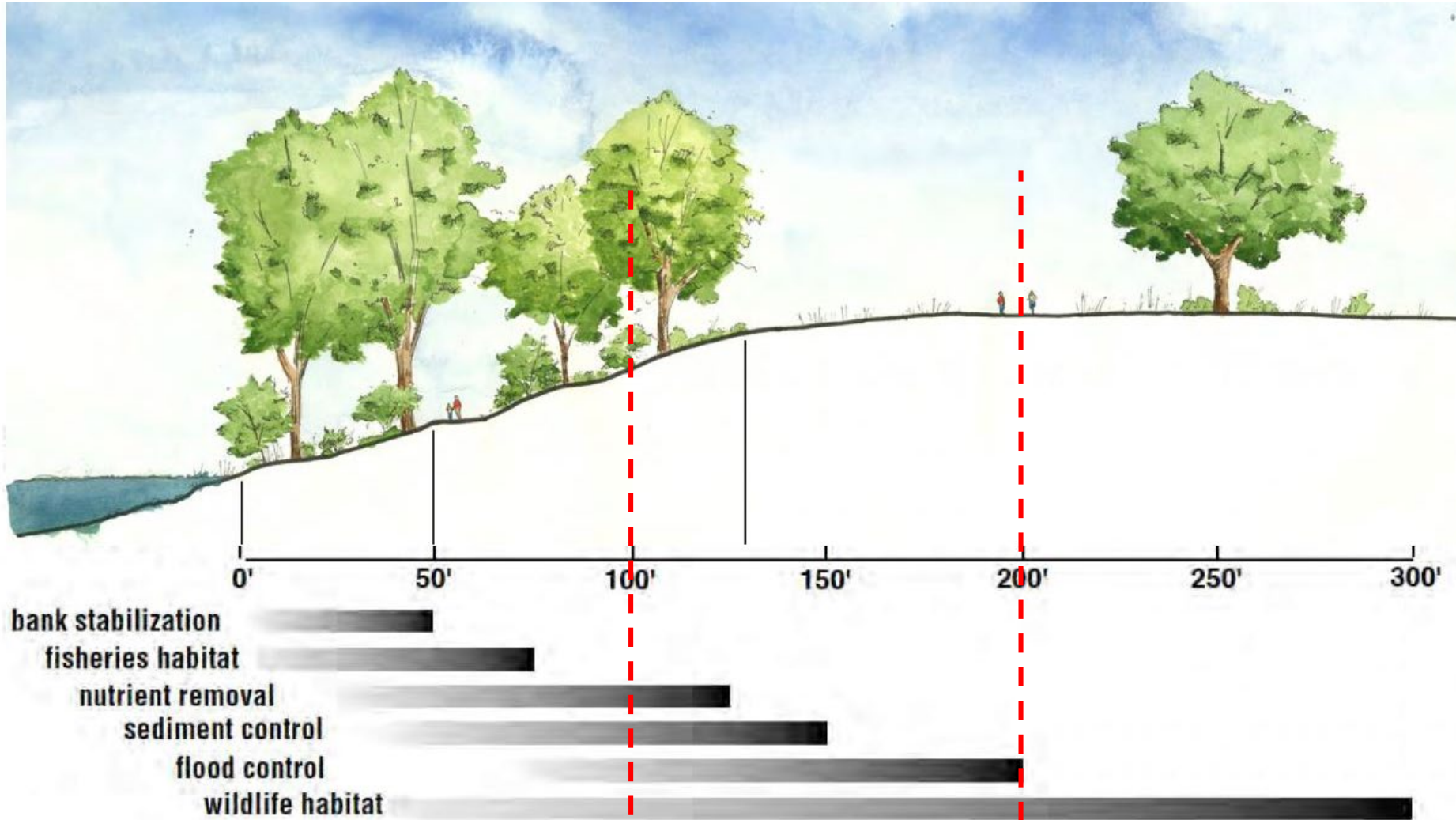
© All Pictometry



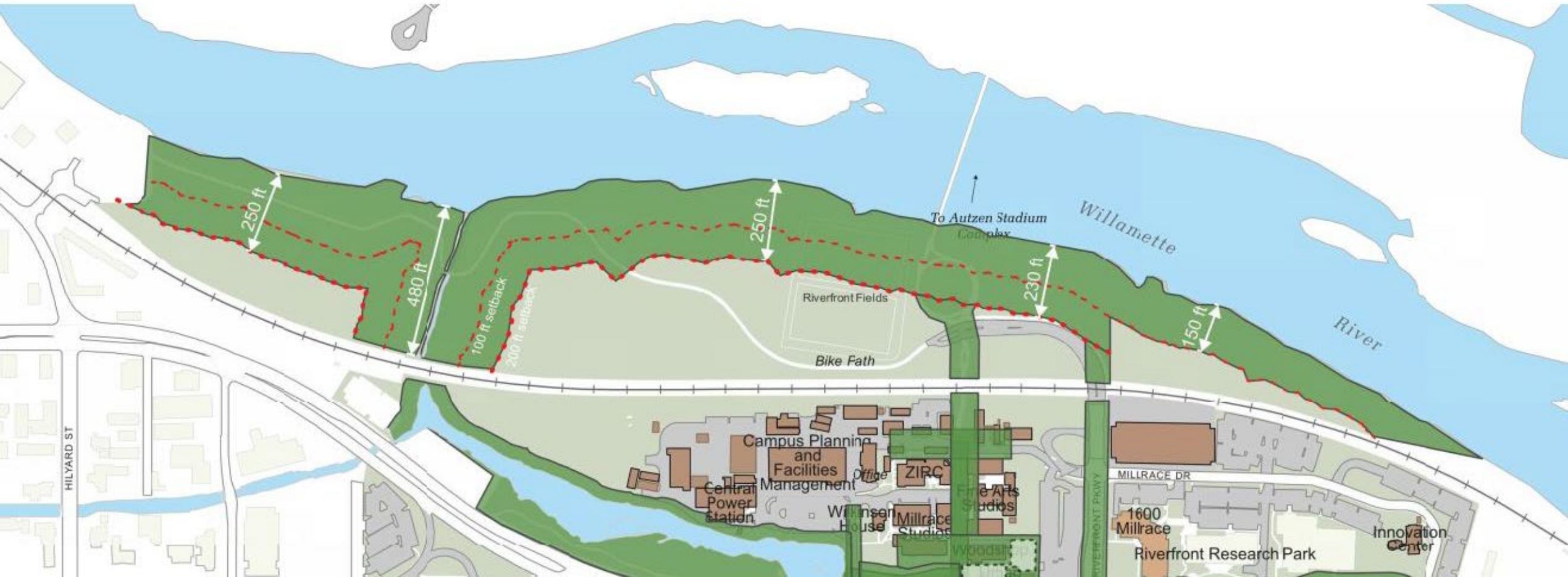








Optimal Riverfront setbacks based on habitat preservation.





For visualization only
Does not reflect exact boundary

For visualization only
Does not reflect exact boundary



Map 1: University of Oregon Campus
Boundaries

Map 3: Designated Open Spaces

Map 4: Pathways

Add “Natural Areas” as new type of
Designated Open Space

Map 5: Design Areas

Table 2: Design Area Development
Densities

Design Area Special Conditions –
Millrace Design Area

Design Area Special Conditions –
Willamette Design Area



Map 1: University of Oregon Campus Boundaries

Map 3: Designated Open Spaces

Map 4: Pathways

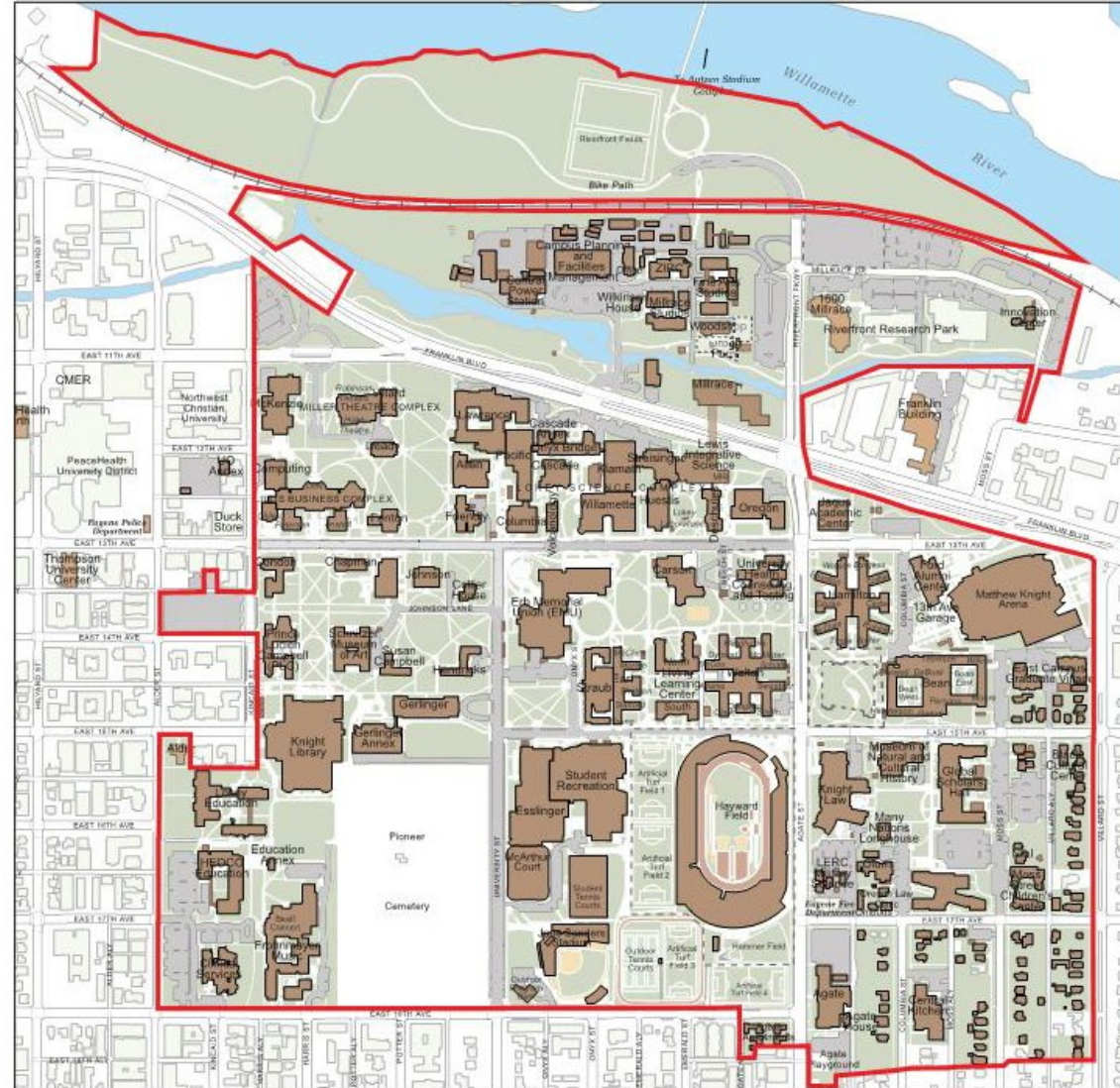
Add “Natural Areas” as new type of Designated Open Space

Map 5: Design Areas

Table 2: Design Area Development Densities

Design Area Special Conditions – Millrace Design Area

Design Area Special Conditions – Willamette Design Area



Proposed Official Campus Boundary

Map 1: University of Oregon Campus Boundaries

Map 3: Designated Open Spaces

Map 4: Pathways

Add “Natural Areas” as new type of Designated Open Space

Map 5: Design Areas

Table 2: Design Area Development Densities

Design Area Special Conditions – Millrace Design Area

Design Area Special Conditions – Willamette Design Area



Proposed Open-space Framework

Map 1: University of Oregon Campus Boundaries

Map 3: Designated Open Spaces

Map 4: Pathways

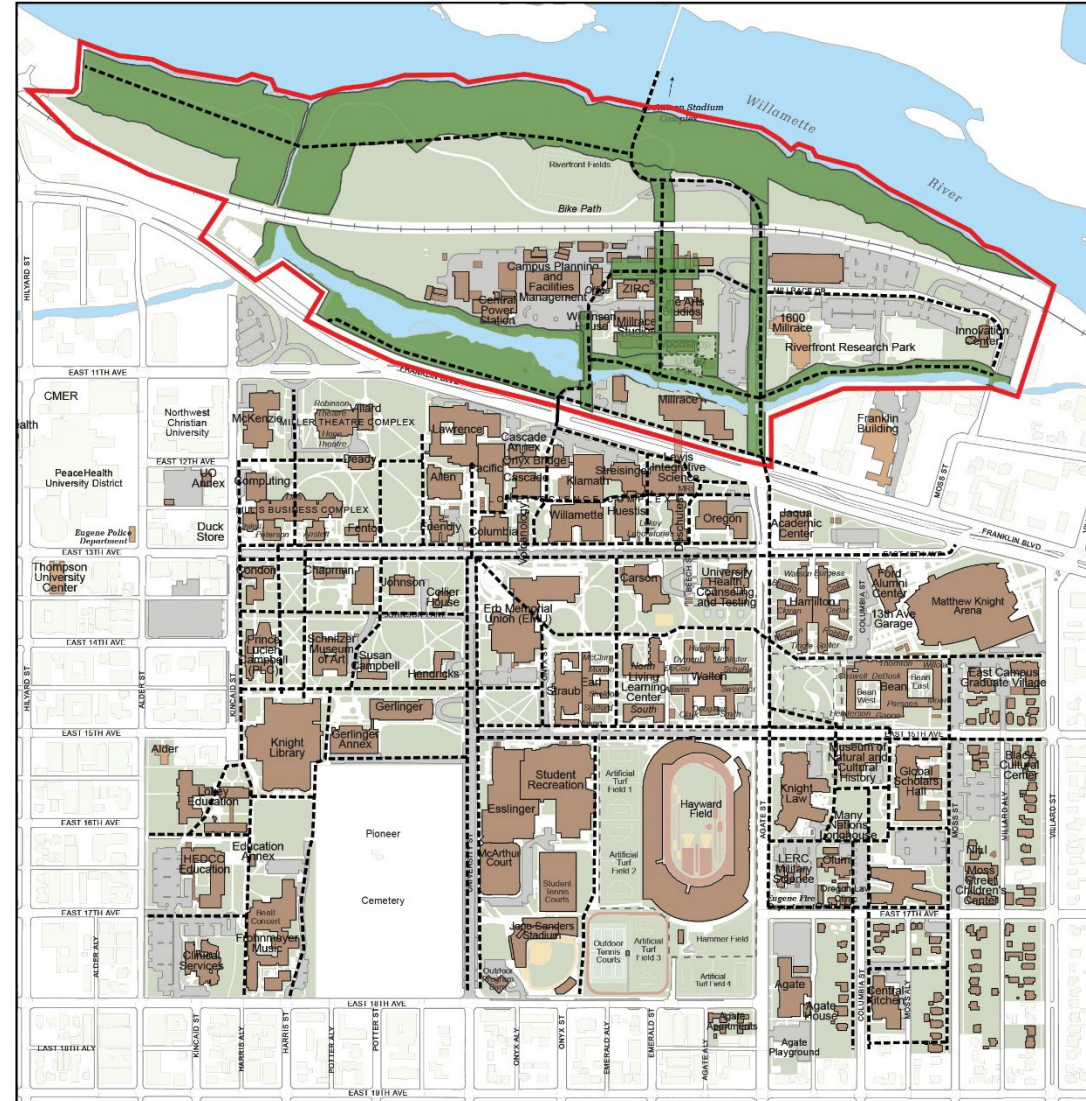
Add “Natural Areas” as new type of Designated Open Space

Map 5: Design Areas

Table 2: Design Area Development Densities

Design Area Special Conditions – Millrace Design Area

Design Area Special Conditions – Willamette Design Area



Proposed Pathways Diagram

Map 1: University of Oregon Campus Boundaries

Map 3: Designated Open Spaces

Map 4: Pathways

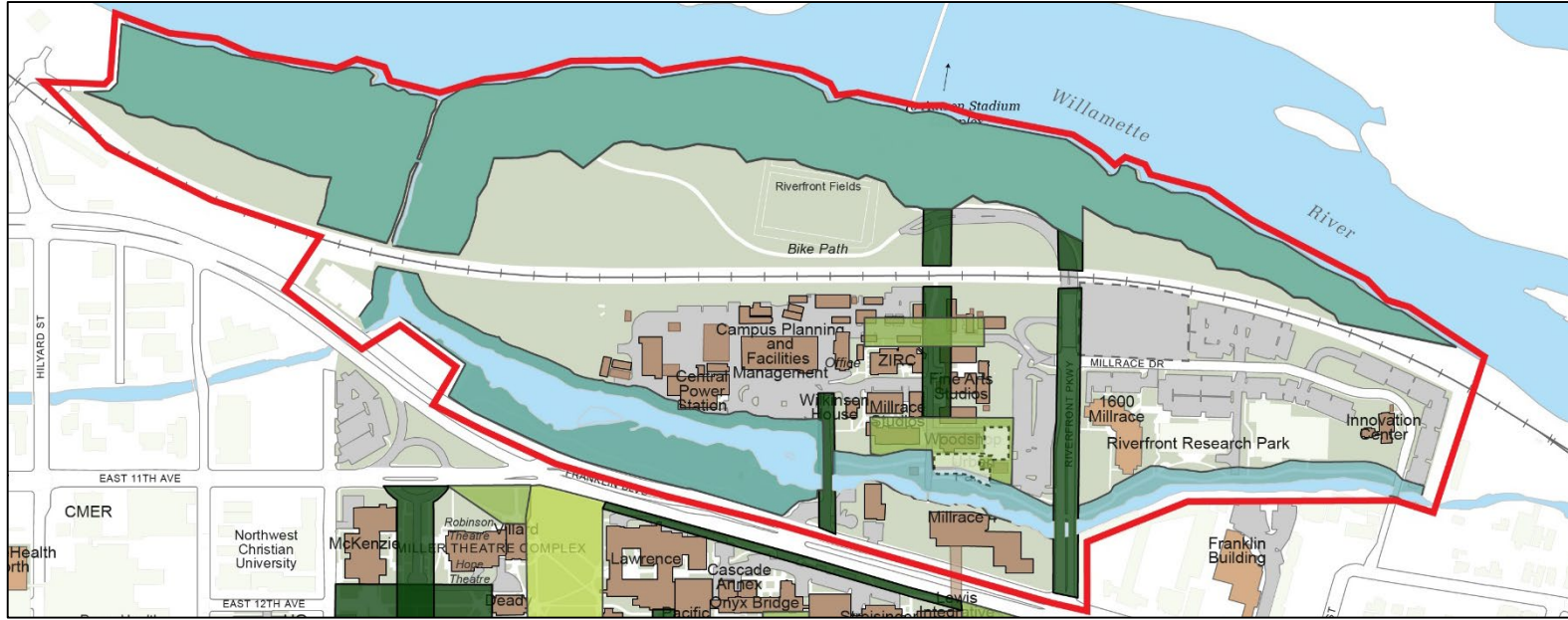
Add “Natural Areas” as new type of Designated Open Space

Map 5: Design Areas

Table 2: Design Area Development Densities

Design Area Special Conditions – Millrace Design Area

Design Area Special Conditions – Willamette Design Area



Open-space Framework by Type

NATURAL AREAS

Natural Areas are open spaces dedicated to preserving and restoring natural habitat and promoting ecological functions, while providing opportunities to learn about and engage with natural systems. Examples of opportunities to engage include outdoor instruction and research, stewardship, walking and bicycling, and other activities associated with being in nature (e.g. personal paddle craft, bird watching, art, etc.). Their form, and often topography, is irregular and typically defined by waterways and adjacent riparian and upland areas. Pathways are typically informal in configuration and need to balance safe access with consideration for ecological impacts. Native plants, which support a wide variety of wildlife, in particular endangered or threatened species, will be prioritized and conserved, as practicable. Unlike other open space types, adjacent development does not play a prominent role in the definition of the open space’s form. Adjacent development should be designed with particular attention to views of, and connections to, Natural Areas. Adjacent light spillover into the open space should be minimized as much as practicable.

Map 1: University of Oregon Campus Boundaries

Map 3: Designated Open Spaces

Map 4: Pathways

Add “Natural Areas” as new type of Designated Open Space

Map 5: Design Areas

Table 2: Design Area Development Densities

Design Area Special Conditions – Millrace Design Area

Design Area Special Conditions – Willamette Design Area



Proposed Design Areas

Map 1: University of Oregon Campus Boundaries

Map 3: Designated Open Spaces

Map 4: Pathways

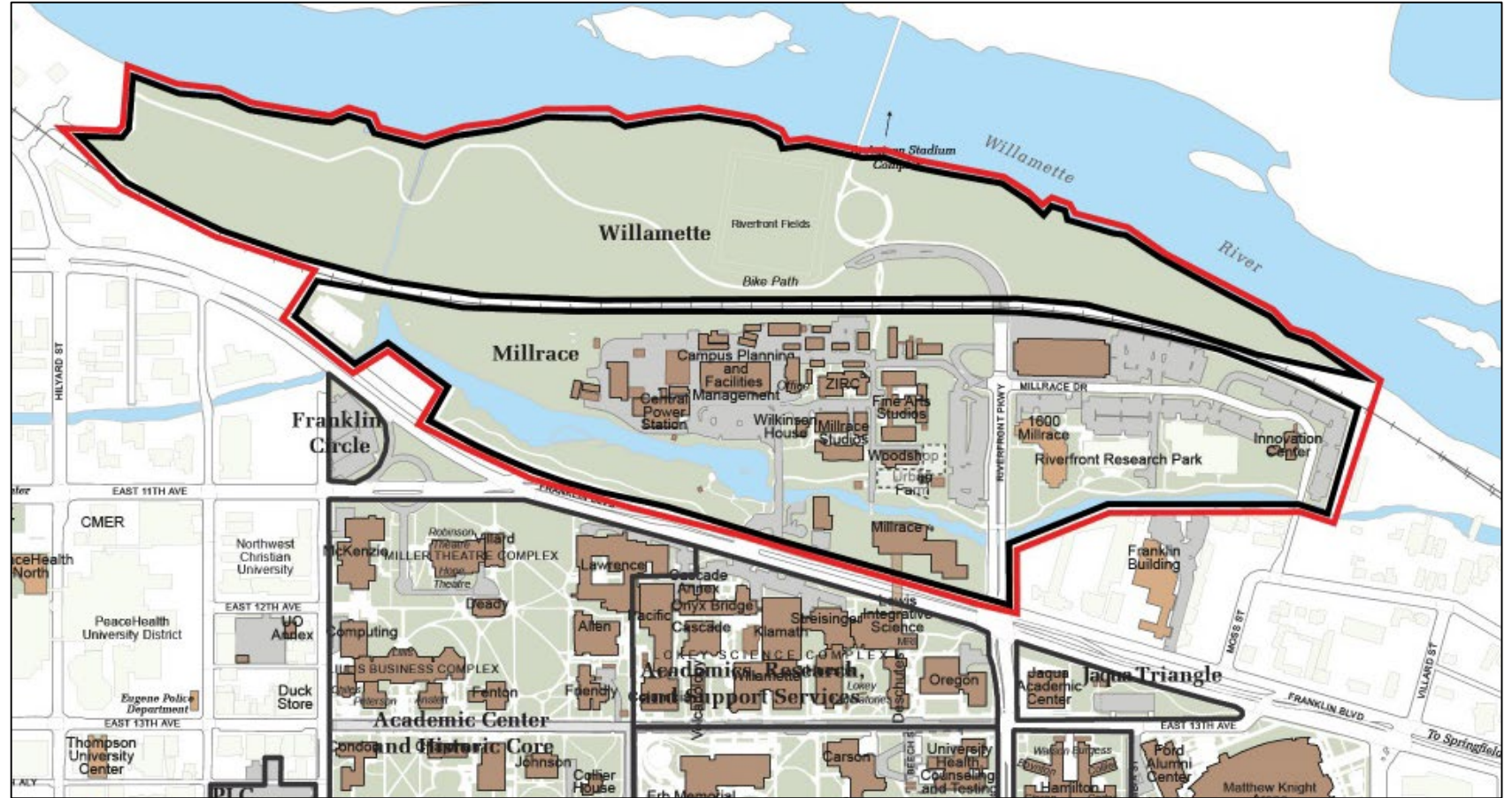
Add "Natural Areas" as new type of Designated Open Space

Map 5: Design Areas

Table 2: Design Area Development Densities

Design Area Special Conditions – Millrace Design Area

Design Area Special Conditions – Willamette Design Area



Millrace Design Area

- Proposed Building Coverage = 22%
- Floor Area Ratio = 0.83

Willamette Design Area

- Proposed Building Coverage = 4%
- Floor Area Ratio: 0.11

Map 1: University of Oregon Campus Boundaries

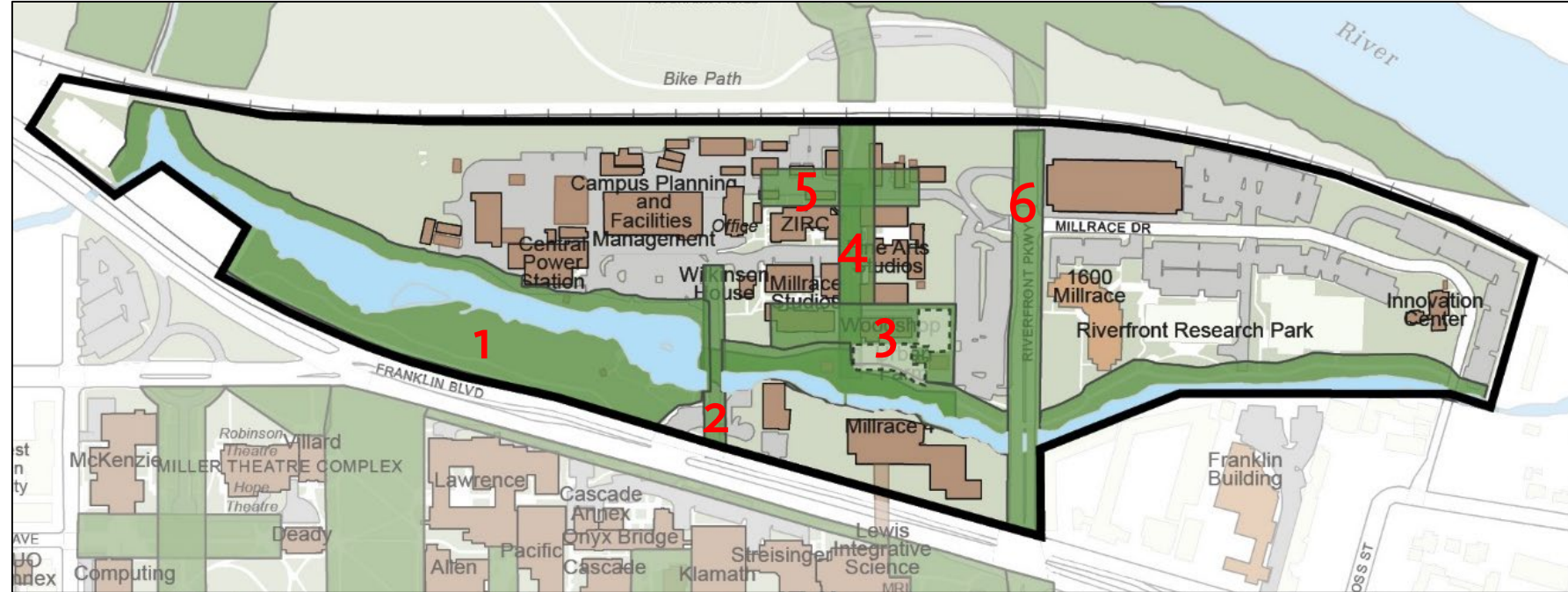
Map 3: Designated Open Spaces

Map 4: Pathways

Add "Natural Areas" as new type of Designated Open Space

Map 5: Design Areas

Table 2: Design Area Development Densities



Millrace Design Area Designated Open Spaces

1. Millrace Natural Area
2. Onyx Axis
3. Millrace Green
4. Riverwalk Axis
5. North Green
6. Riverfront Parkway Axis

**Design Area Special Conditions –
Millrace Design Area**

**Design Area Special Conditions –
Willamette Design Area**

Map 1: University of Oregon Campus Boundaries

Map 3: Designated Open Spaces

Map 4: Pathways

Add “Natural Areas” as new type of Designated Open Space

Map 5: Design Areas

Table 2: Design Area Development Densities

**Design Area Special Conditions –
Millrace Design Area**

**Design Area Special Conditions –
Willamette Design Area**

As opportunities arise, CPFM should continue to consolidate operations west of Onyx Street. **Consider vegetative screening to buffer facilities related activities from adjacent areas.** There is an opportunity for one non-facilities related building to the west of the Onyx Axis on a current parking lot. Refer to the CPFM/FASS Operations Center Programming and Conceptual Design Report. New vehicle access routes should be established from Riverfront Parkway and from Franklin Blvd over the Millrace at the west end of the CPFM area to reduce the use of Onyx Street by service and delivery vehicles, thereby improving the pedestrian quality of this axis.



Map 1: University of Oregon Campus Boundaries

Map 3: Designated Open Spaces

Map 4: Pathways

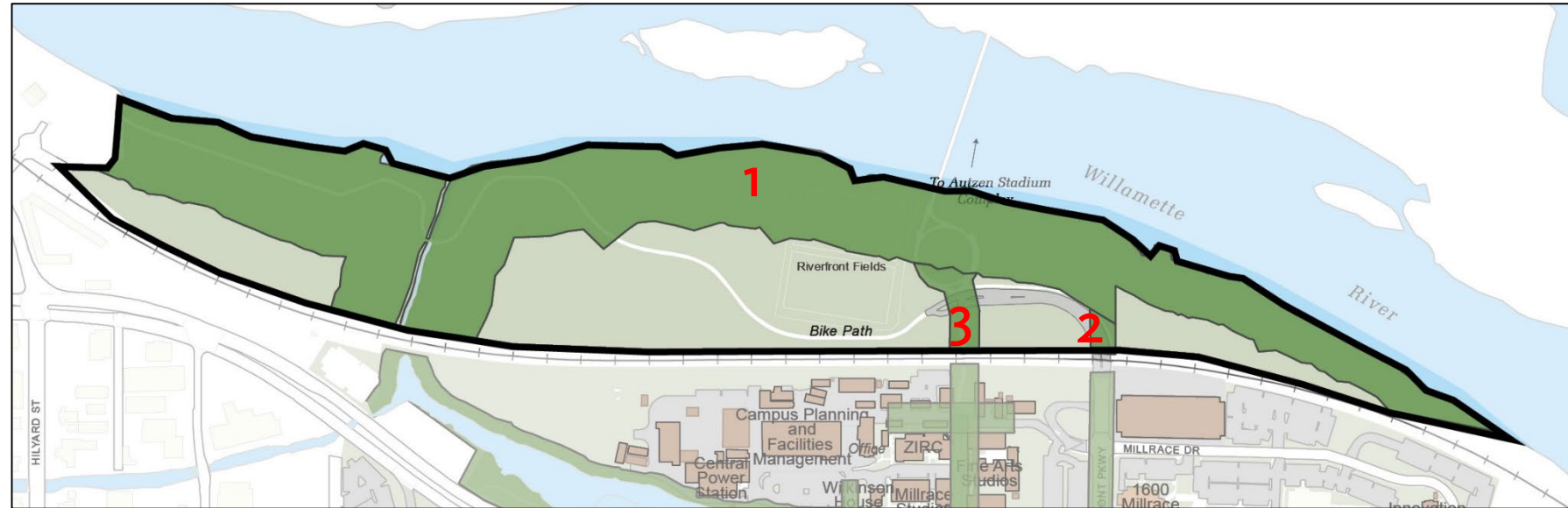
Add "Natural Areas" as new type of Designated Open Space

Map 5: Design Areas

Table 2: Design Area Development Densities

Design Area Special Conditions –
Millrace Design Area

Design Area Special Conditions –
Willamette Design Area



Willamette Design Area Designated Open Spaces

1. Willamette Natural Area
2. Riverfront Parkway Axis
3. Riverwalk Axis

Map 1: University of Oregon Campus Boundaries

Map 3: Designated Open Spaces

Map 4: Pathways

Add “Natural Areas” as new type of Designated Open Space

Map 5: Design Areas

Table 2: Design Area Development Densities

Design Area Special Conditions – Millrace Design Area

Design Area Special Conditions – Willamette Design Area

Area-wide Space Use Comments

Development in this area should respond to the environmental and recreational context of the Willamette River and Millrace outfall and consider integrating innovative sustainable design principles, including a diverse palette of native flora.

This area includes land that was previously disturbed by industrial uses resulting in a significant amount of fill material throughout the site and a steep riverbank making access to the river difficult. Historical uses included large scale resource extraction and manufacturing, including gravel mining, an asphalt and concrete plant, and a utility storage yard. Much of the design area has been minimally managed, primarily with periodic mowing, and allowed to be revegetated reflecting a somewhat natural state. **Several different remnant habitats exist and most of the trees are native**, although significant amounts of invasive plant species are present throughout the area. West of the Millrace outfall there are remnants of past industrial uses throughout the site.



Map 1: University of Oregon Campus Boundaries

Map 3: Designated Open Spaces

Map 4: Pathways

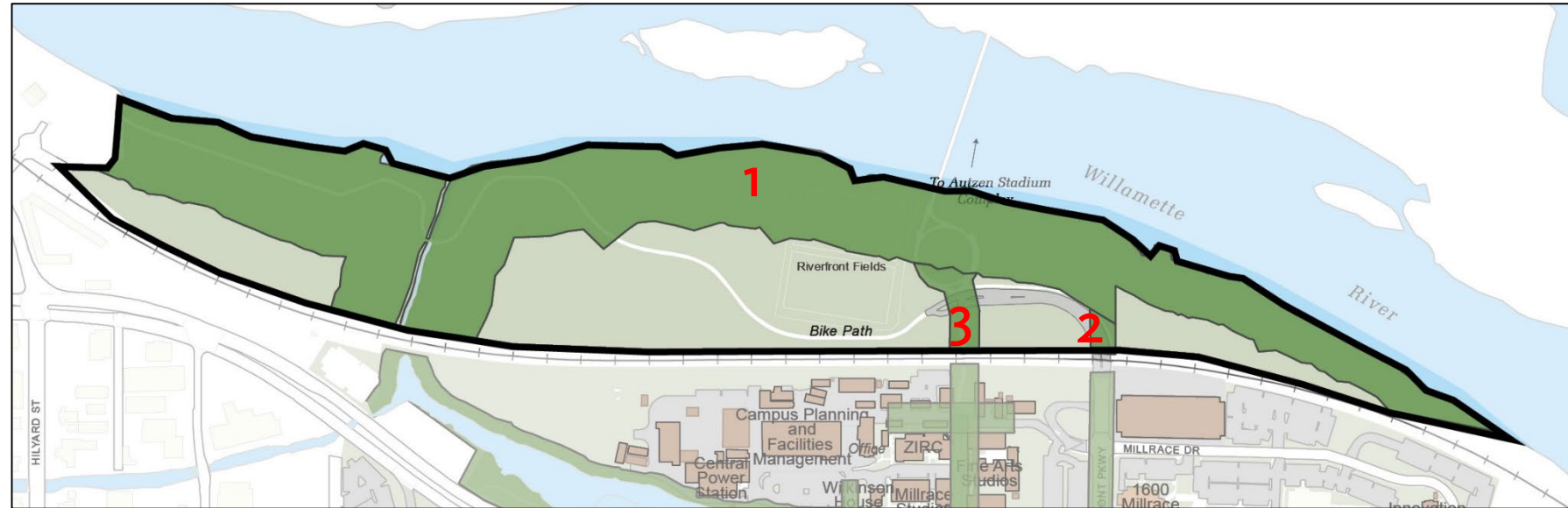
Add “Natural Areas” as new type of Designated Open Space

Map 5: Design Areas

Table 2: Design Area Development Densities

Design Area Special Conditions – Millrace Design Area

Design Area Special Conditions – Willamette Design Area



Willamette Design Area Designated Open Spaces

1. Willamette Natural Area
2. Riverfront Parkway Axis
3. Riverwalk Axis

