

APPENDIX – Custodial Closets

Document revision history: 08/2019 – Original Publication

Date	Section	Description of Change

PART 1 – GENERAL

1.1 Design Summary

- a. Remodeling activities are not to result in the reduction of available custodial space below space standards, and to the extent possible, remodeling projects shall be viewed as opportunities to improve substandard facilities.
- b. Do not combine custodial closets with other building program areas. (This room may not double as a storage closet, server room, electrical closet, etc.)

1.2 Spatial Considerations

- a. Minimum closet is 6ft x 6ft.
- b. Doors shall be a minimum of 36in wide, swing out, and no automatic closures.
- c. Oversized closets shall be 6ft x 12ft.
- d. Equipment stored in closets
 - Custodial Cart – Size (LxWxH) 46”x22”x39” – One located in each custodial closet.
 - Trash Barrel/with caddy – (LxWxH) 33”x27”x39” – One located in each custodial closet.
 - Floor care equipment – (LxWxH) 45”x18”x40” – Stored in central custodial closet.
 - Riding Scrubber – (LxW) 44”x26” – Stored in central custodial closet
 - Cardboard / Trash transport bins – (LxWxH) 65”x30”x38” – May be multiple of these. Located at loading dock or in storage spaces with public access throughout the building.

1.3 Locations

- a. One custodial closet located within 50ft of each restroom area.
- b. Minimum of one custodial closet on each floor.
- c. Minimum of one oversized custodial closet in each building.
- d. Closets shall not be near, nor exit into, carpeted hallways.

PART 2 – PRODUCTS

2.1 Finishes

2.1.1 Flooring

2.1.2 Walls

2.1.3 Ceilings

- a. No ceilings required - Tall space is needed for ladders and extension poles.

2.1.4 Storage

- a. Shelving
 - Three 6ft long shelves per closet.
 - Bottom shelf shall be 4ft-6in off finish floor.
 - Each shelf is to be 12in deep and allow 12in clear height to next shelf.
- b. Mop Hangers
 - Two mop hangers at 6ft off finish floor located over the floor / mop sink.
 - Four additional mop hangers at 6ft off finish floor within the room.

- c. Hose Bracket
 - 3/4 inch brass coupling and stainless steel hose bracket above mop sink.
 - i. Similar to Fiat 832-AA or 889-CC

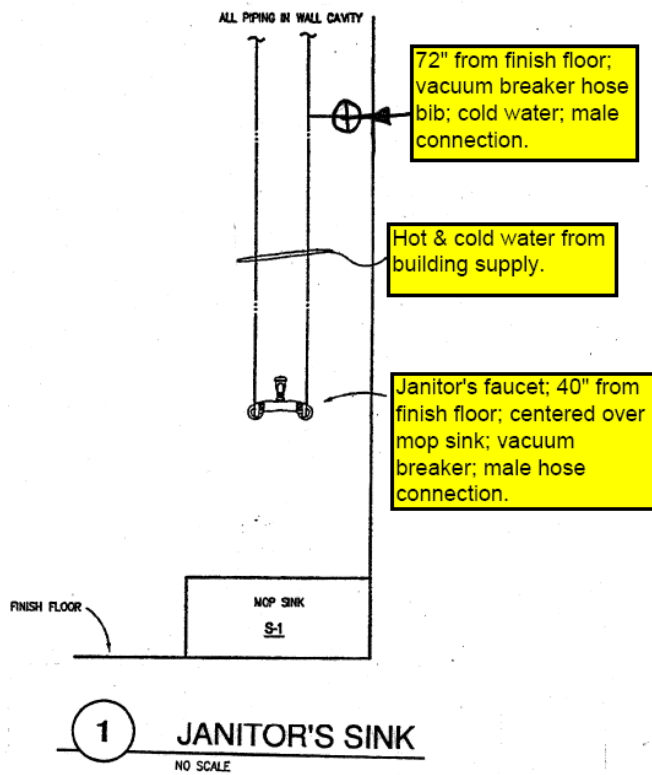
2.2 MEP Systems

- a. Mechanical
 - Oversized closets shall have ventilation to the outside as this closet will then be used to charge batteries for larger equipment.
- b. Electrical
 - At least one duplex in each custodial equipment storage locations.
- c. Plumbing
 - Floor Drain
 - i. Required in each closet; to be installed at the lowest point.
 - Mop Sink
 - i. One in each closet.
 - ii. One piece and floor mounted.
 - iii. 28 inch x 28 inch x 13 inches.
 - iv. Material: enamel on cast iron.
 - v. Color: White
 - vi. Drain: factory installed type 302 stainless steel bodies with combination dome strainer and lint basket.
 - vii. Acceptable Manufacturers: Kohler, Commercial Enamel, American Standard, or approved.
 - Cold Water Hose Bib
 - i. Style: Inside sill fitting.
 - ii. Vacuum breaker spout.
 - iii. 1/2-inch NPT female thread inlet.
 - iv. 293-6 loose key handle.
 - v. Slow compression cartridge.
 - vi. 72 inches from finish floor.
 - Faucet
 - i. 40 inches from finish floor & centered over mop sink.
 - ii. Wall mounted service type.
 - iii. 6 inch spout with integral vacuum breaker.
 - iv. 3/4 inch threaded hose outlet.
 - v. Adjustable centers.
 - vi. Integral check arms.
 - vii. Chrome plated.
 - Isolation valves required on hot and cold water.
 - i. 1/2 inch ball valves only

PART 3 – EXECUTION

3.1 Installation

- a. The following sketch is a diagram of plumbing noted above and to be included. Wall layout must comply.



3.2 Interface with other products

- a. Not applicable.

3.3 Testing

- a. Not applicable.

3.4 Training

- a. Not applicable.