

13TH AVENUE CONCEPTUAL DESIGN

Project Advisory Group Meeting 4

PROCESS

sep oct nov dec jan feb mar **apr** may jun

analysis & opportunities



analysis
PSPL survey

conceptual design



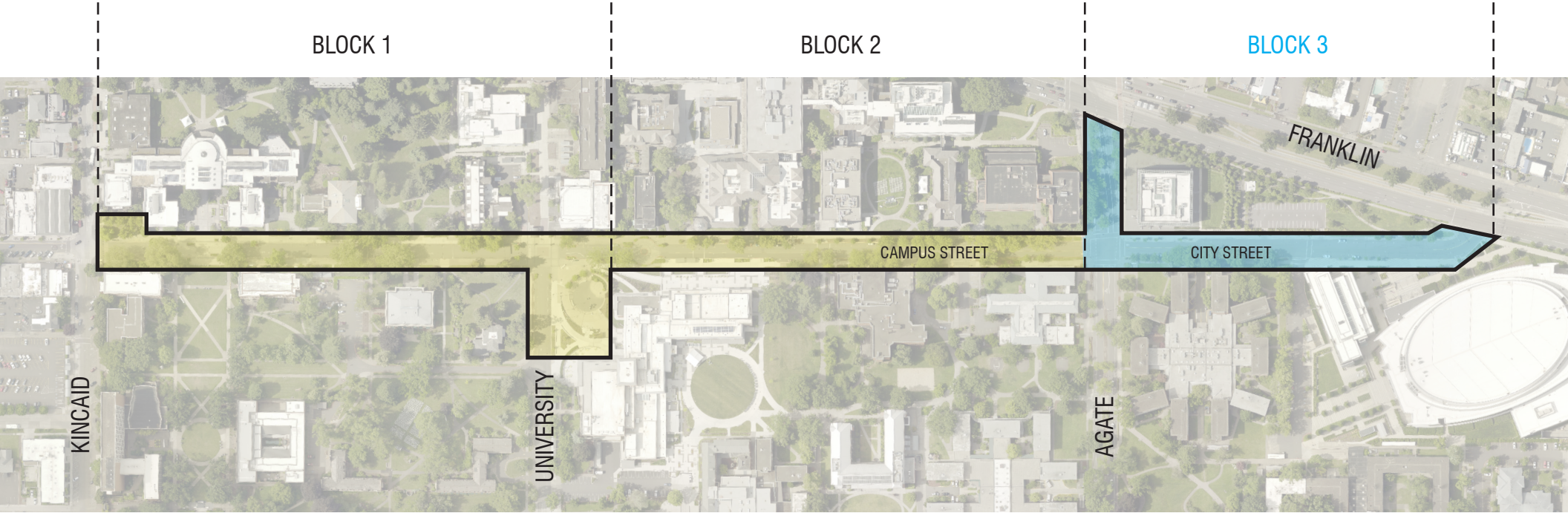
preliminary concept designs PAG 3
presentation to Campus Planning Committee 1
preferred concept PAG 4
presentation to Campus Planning Committee 2

final report

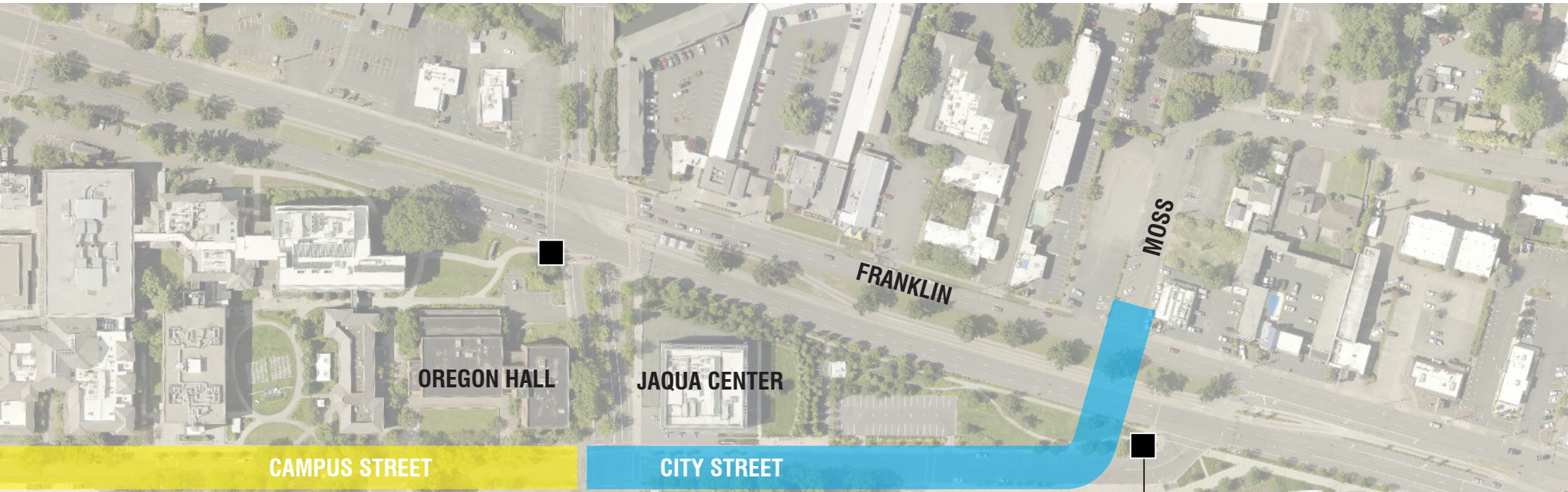


draft report
final report

PROJECT AREA



EAST BLOCK

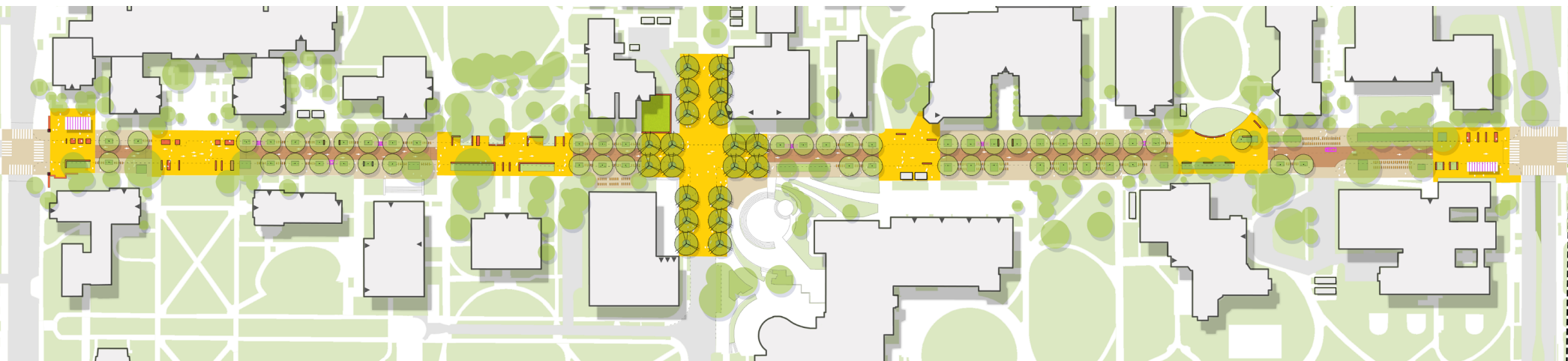


PRELIMINARY CONCEPTS (february)

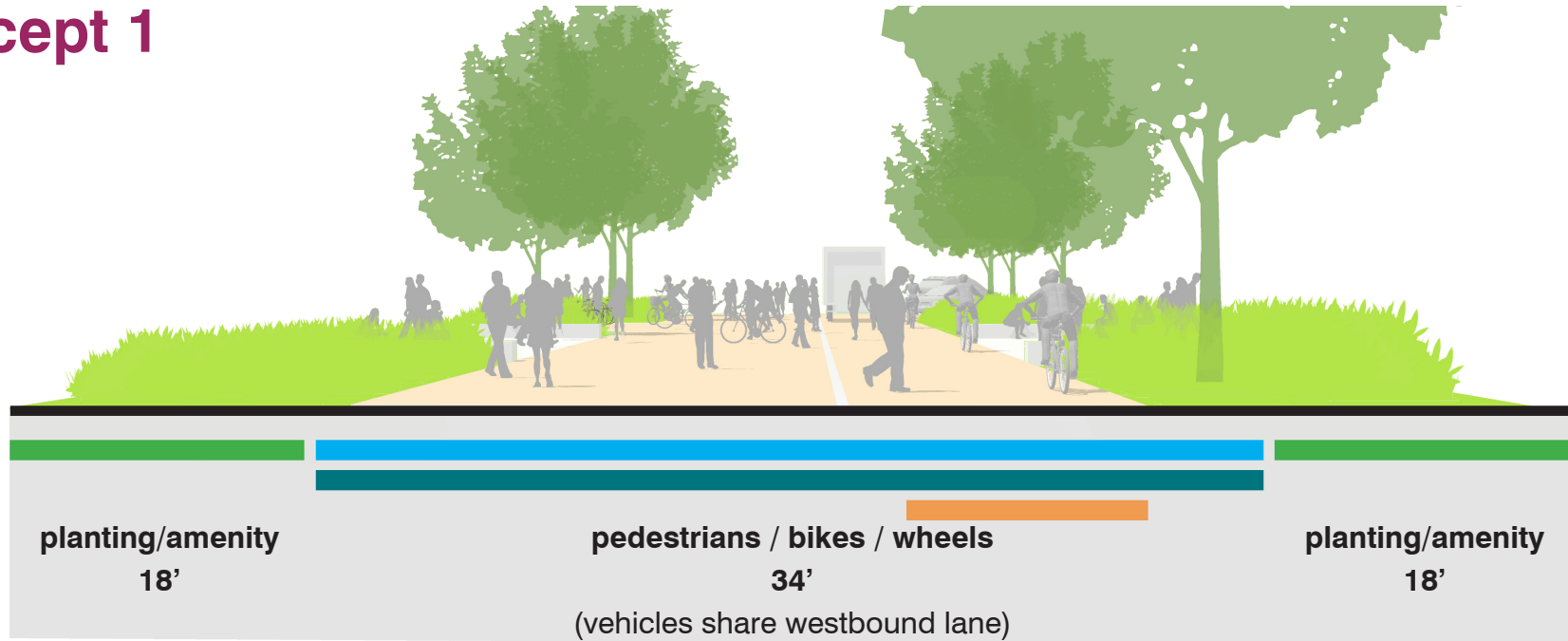
promenade



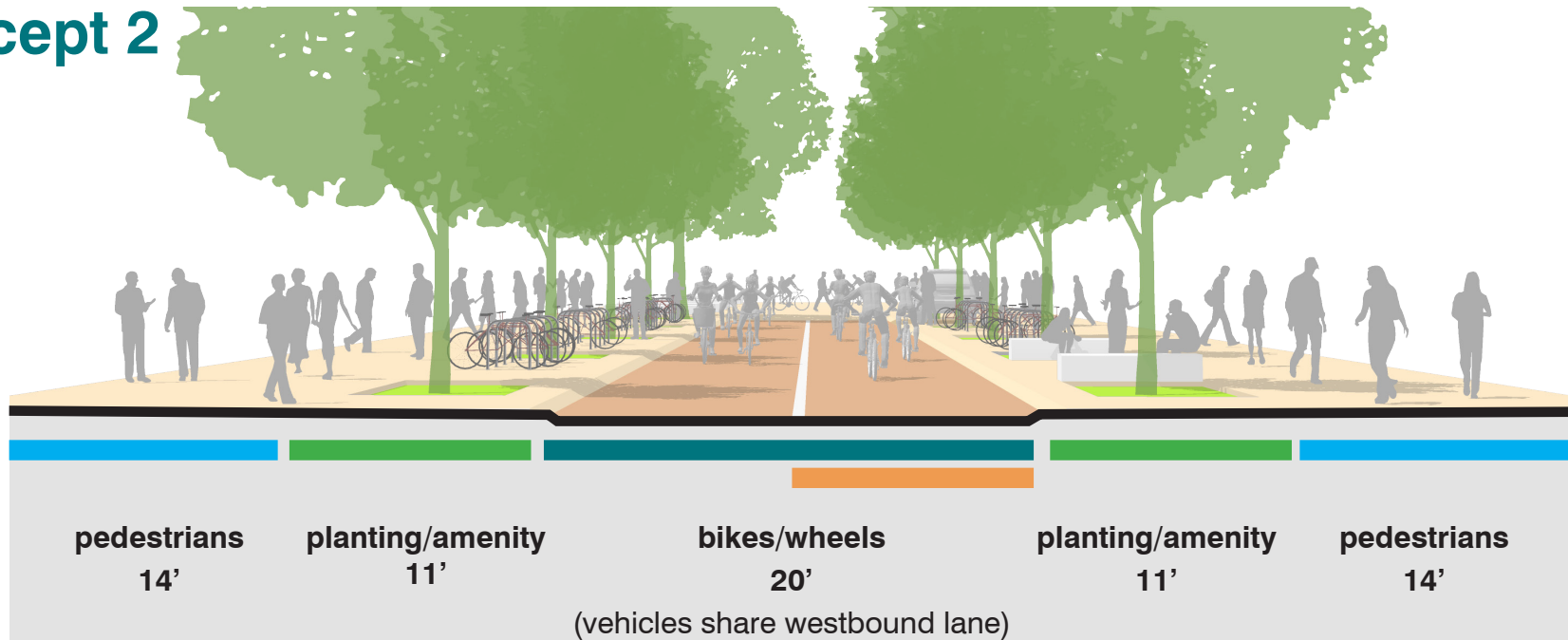
campus connections



concept 1



concept 2

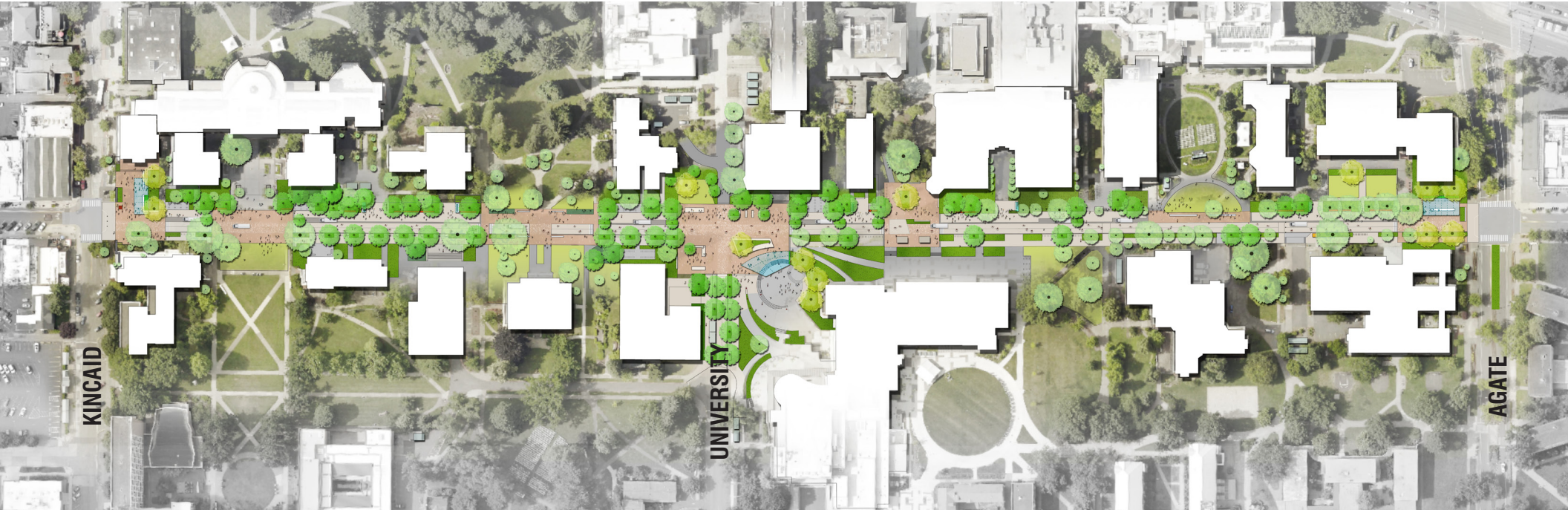


PREFERENCES ON PRELIMINARY CONCEPTS

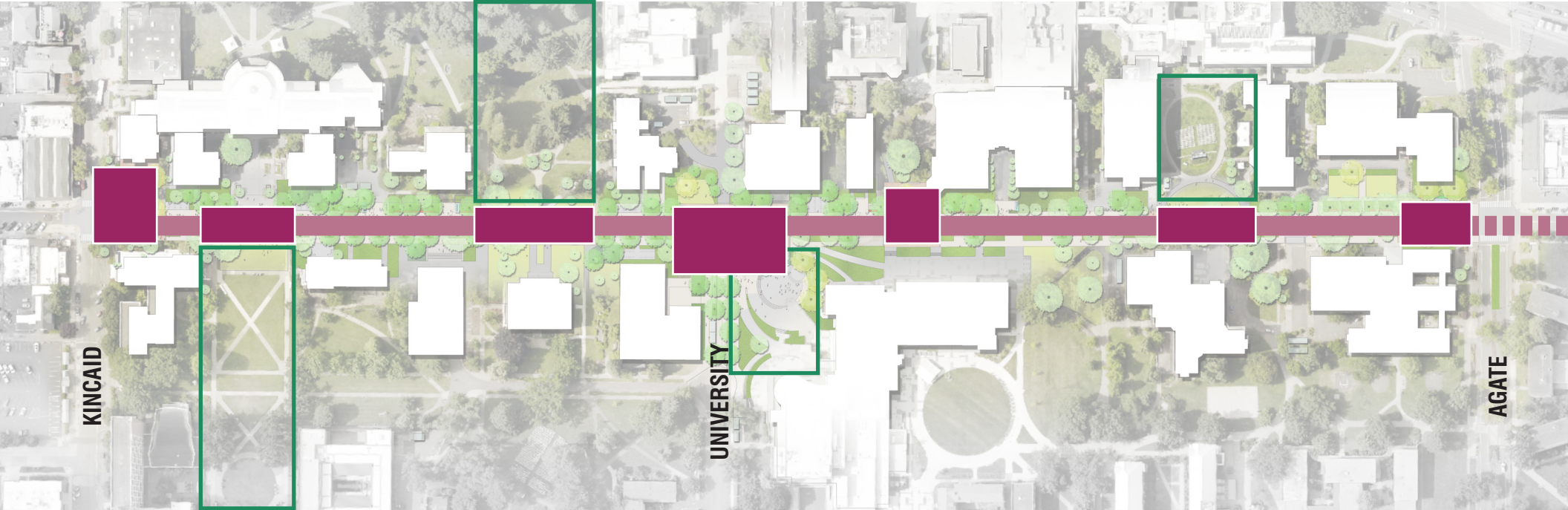
- **Pedestrian and bike/wheels separation**
- **Strong character that doesn't feel like a typical street**
- **Managed access point for vehicles near Carson Hall**
- **Allow vehicles to turn south on University**
- **Gathering spaces next to campus open spaces**
- **Range of small social and seating areas along the corridor**
- **Campus Heart with several distinct areas for day-to-day use, and more informal design**
- **Large storm water gardens for character & identity**
- **Large canopy trees**

PREFERRED CORRIDOR CONCEPT

CORRIDOR PLAN



AXIS WITH GATHERING SPACES



COMPARISON



pedestrians
10'

planting/
amenity
8'

bikes/wheels
17'
(2) 8.5' lanes
vehicles share westbound lane

pedestrians
17'

planting/amenity
18'



pedestrians
10'

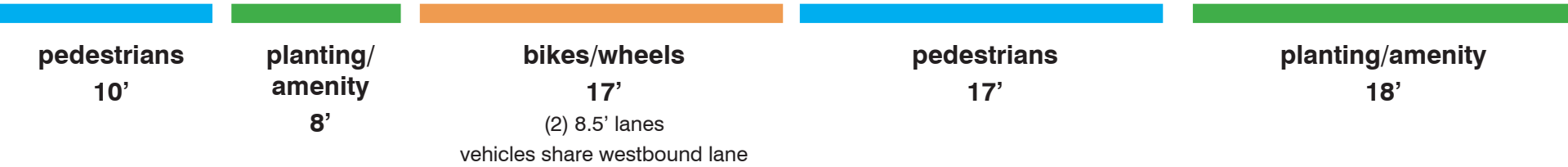
planting/
amenity
8'

vehicles, bikes
& parking
34'

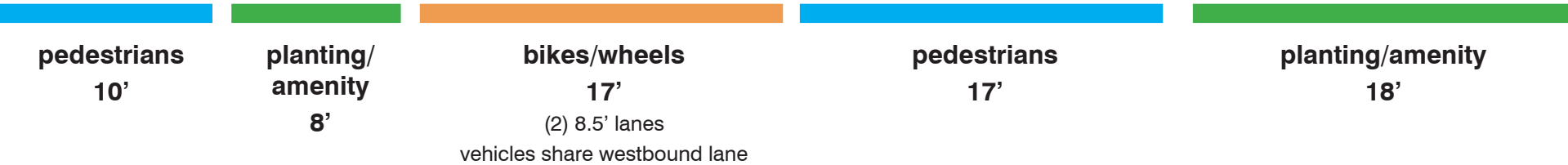
planting/
amenity
8'

pedestrians
10'

TYPICAL SECTION 1



TYPICAL SECTION 2



DESIGN ELEMENTS



ALIGNMENT



STREET ZONES



PEDESTRIAN CIRCULATION



BIKE AND WHEELS CIRCULATION



MIXING ZONE
WHEELS YIELD TO PEDESTRIANS

(2) 8.5' WIDE WHEELS LANES

PLANTING AND TREES



WIDE NATURALIZED PLANTING ON NORTH SIDE

STREET PLANTING AT EXISTING & INFILL STREET TREES



SOCIAL LIFE



DISTINCTIVE LINEAR SEAT
SEATING NOOKS WITH CAMPUS BENCHES



CHARACTERISTICS



NORTH SIDE

**SOCIAL
SUNNY
LUSH
STICKY EDGES
UNIQUE**

SOUTH SIDE

**CONSISTENT
BUFFERED**

PAVING CONCEPT



PLAZA PAVING
unit pavers

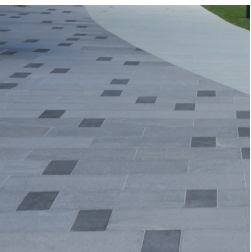
PEDESTRIAN PAVING
concrete with special finishes

WHEELS ZONE PAVING
concrete with special finishes

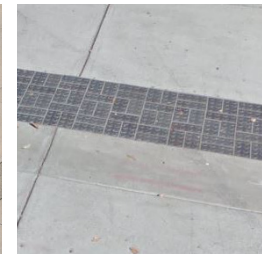
DETECTABLE EDGES
textured pavers



plaza unit pavers



concrete with special finishes



textured pavers

PEDESTRIAN'S VIEW



CYCLIST'S VIEW



GATHERING SPACES

GATHERING SPACES



KINCAID PLAZA



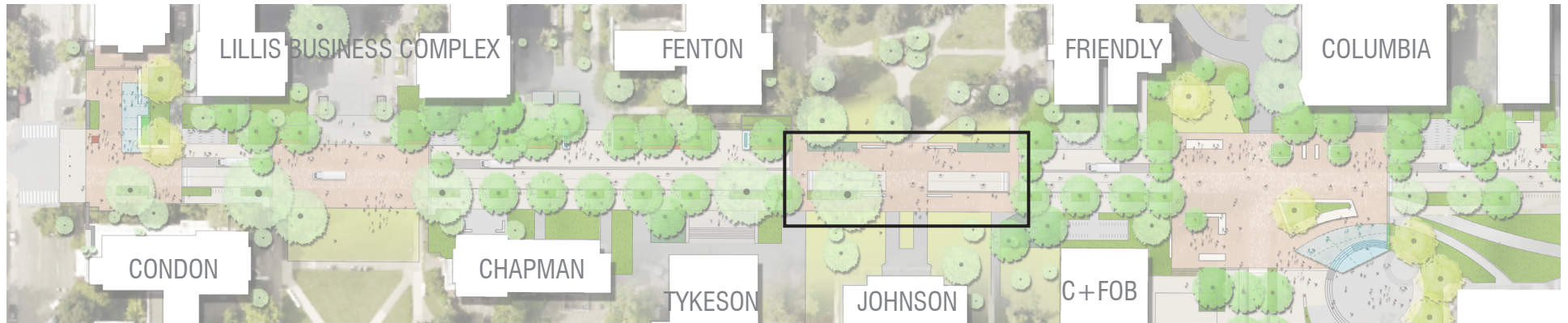
- Campus entrance and hub
- Arrival, drop-off/pick-up (ride share location)
- Pavilion / rain shelter
- Meeting point
- Food & beverage carts and trucks

MEMORIAL QUAD PLAZA



- Celebrates prominent campus open space
- Design for maximum flexibility for events

OLD CAMPUS PLAZA



- Johnson Hall / Old Campus Quad connection
- Simple formal design with grand seating elements
- Extension of lawn
- Storm water opportunity

CAMPUS HEART



FRIENDLY

COLUMBIA

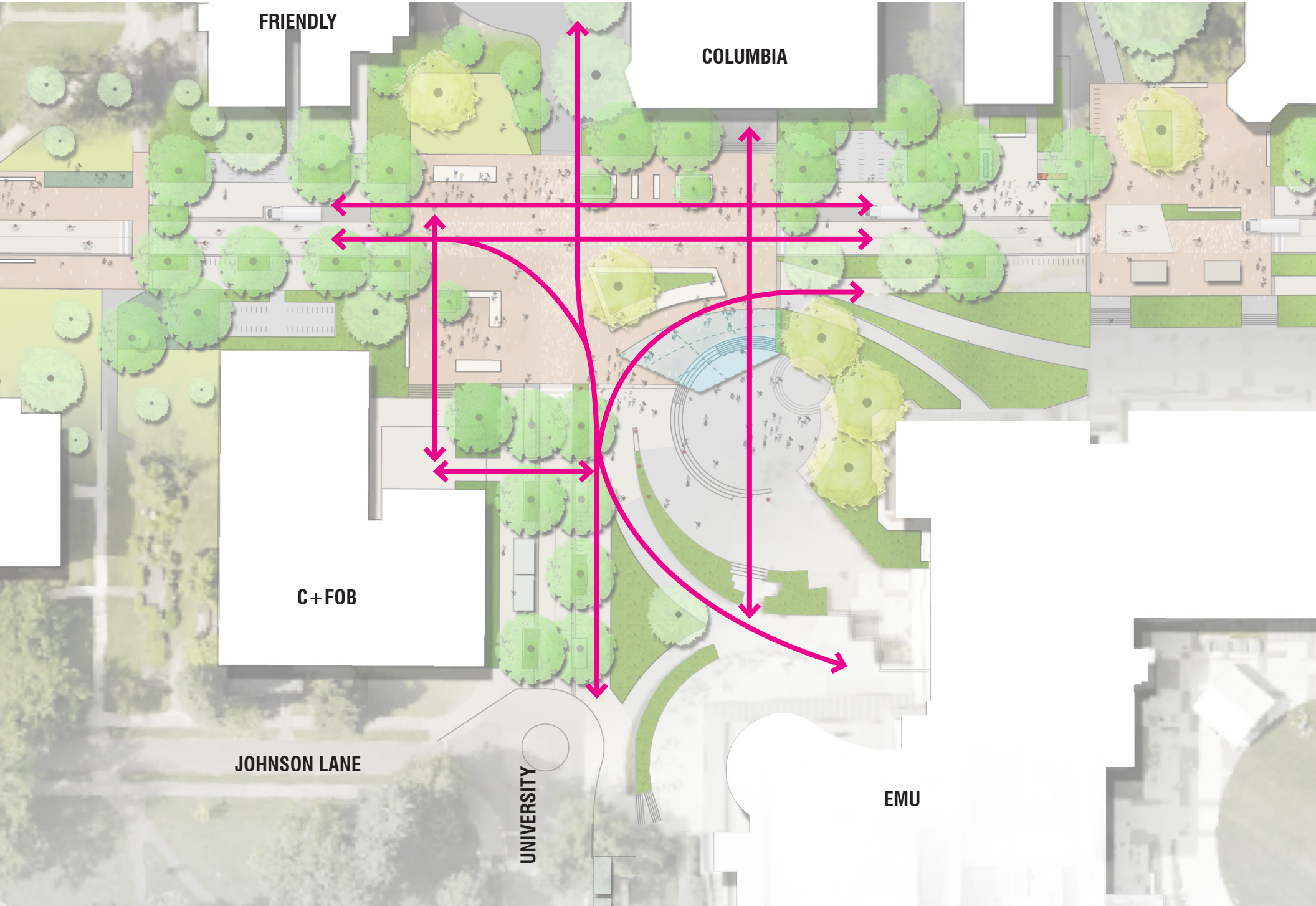
C+FOB

JOHNSON LANE

UNIVERSITY

EMU

CIRCULATION



FRIENDLY

COLUMBIA

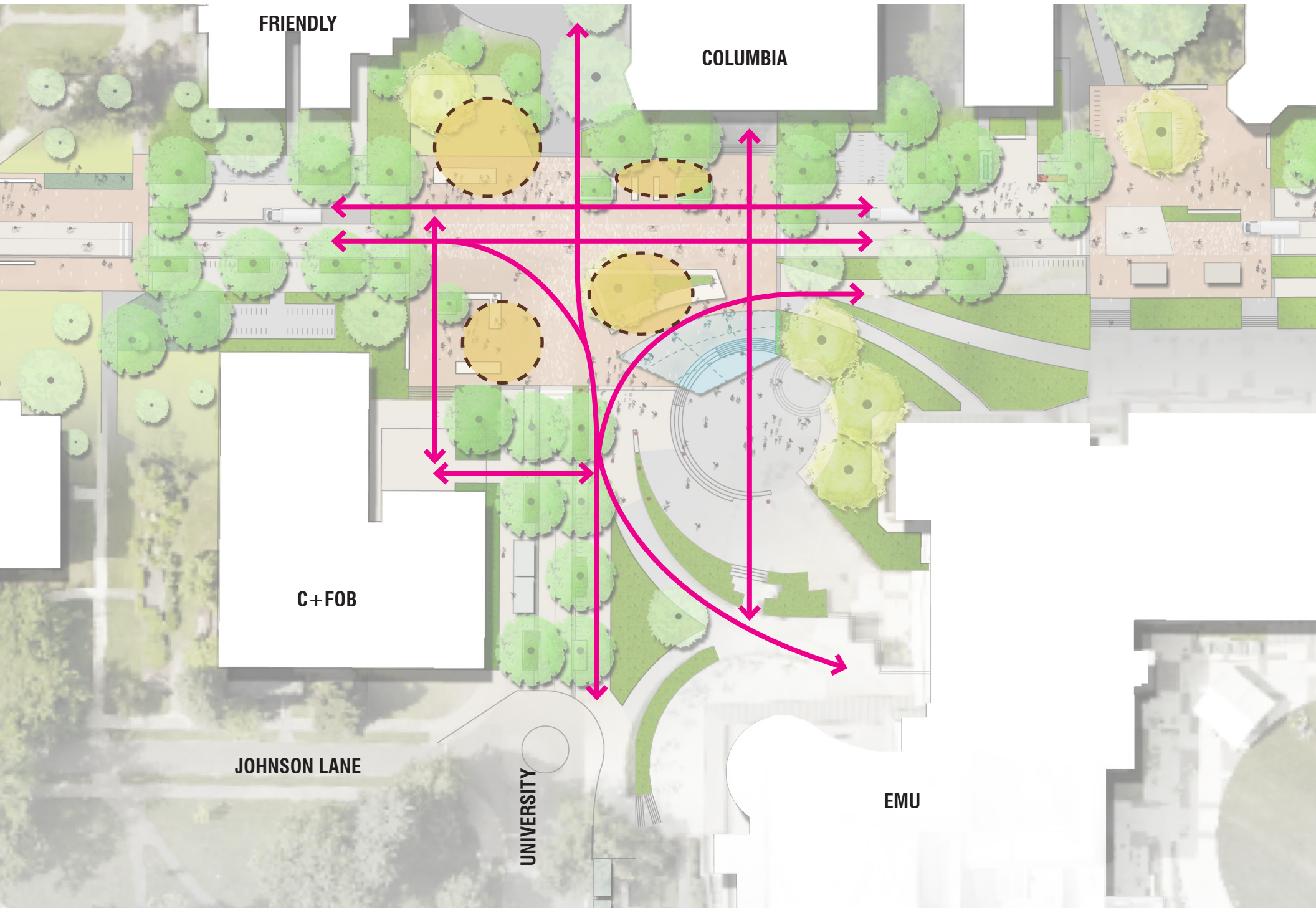
C+FOB

JOHNSON LANE

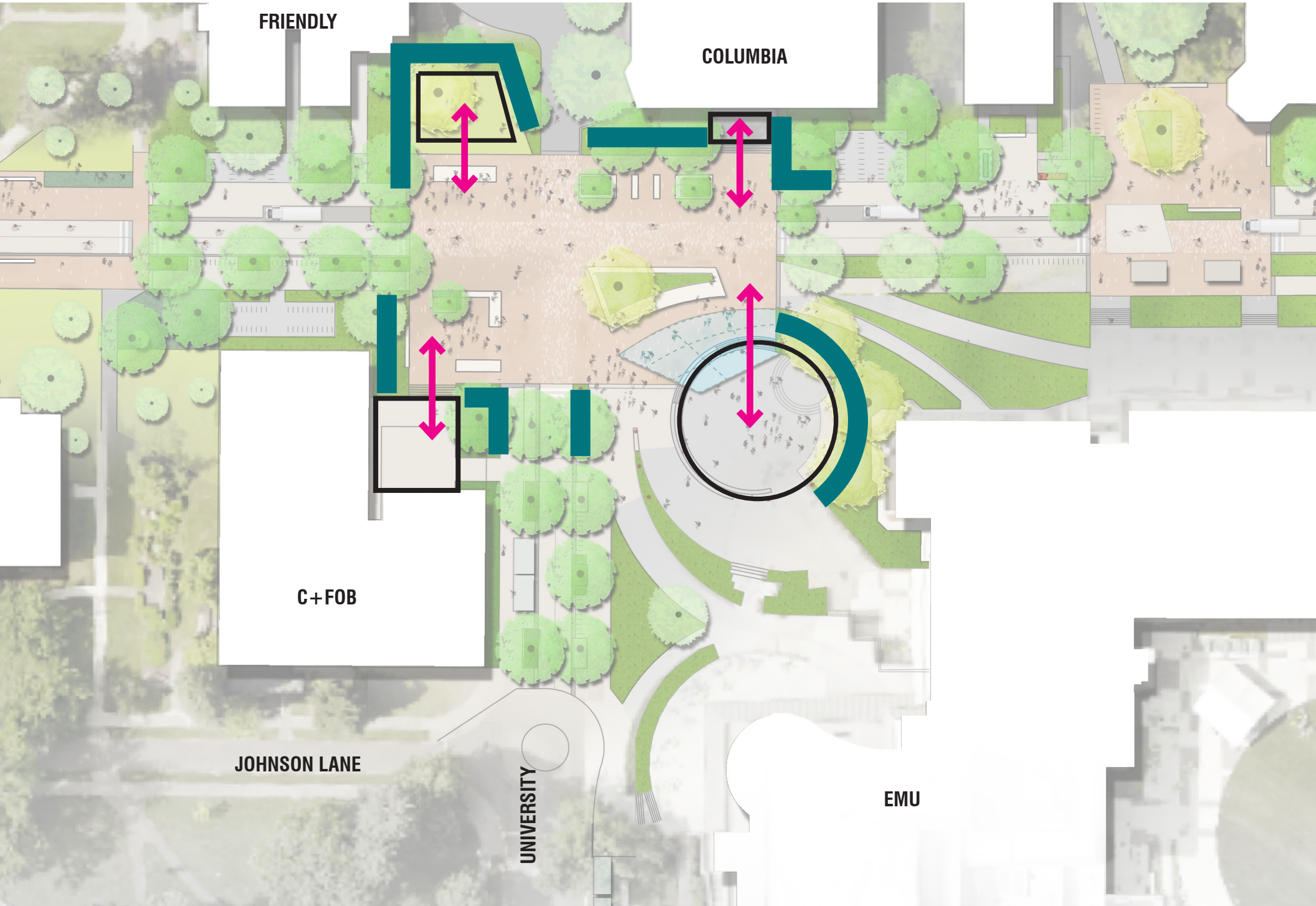
UNIVERSITY

EMU

EDDIES

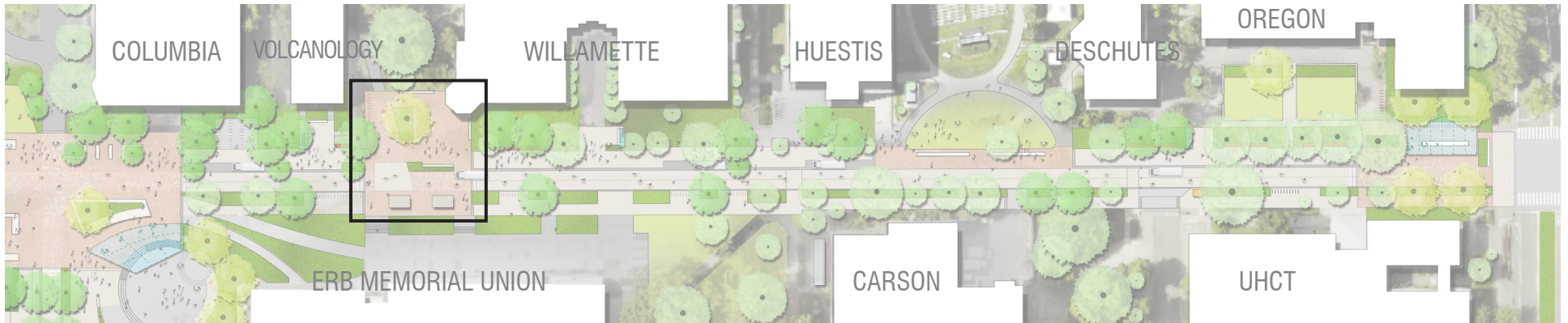


PORCHES



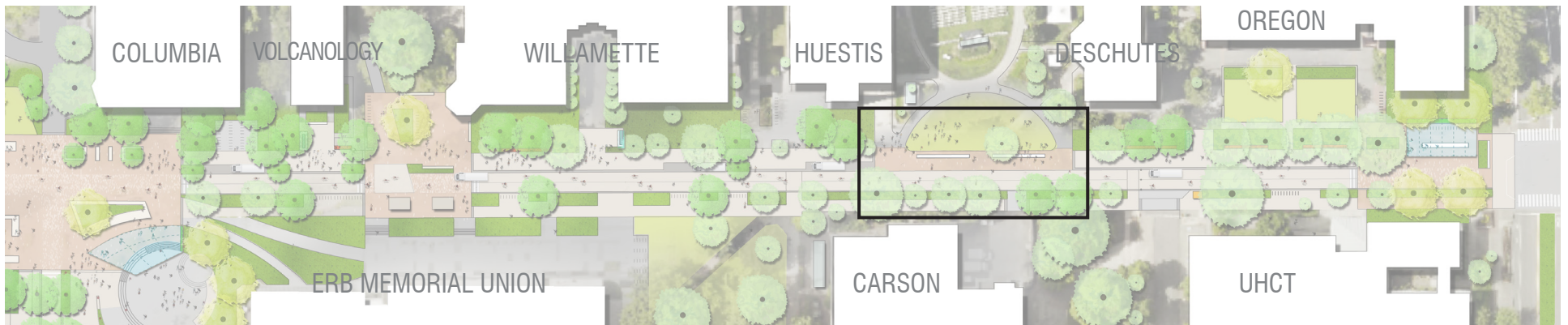


ONYX CONNECTOR PLAZA



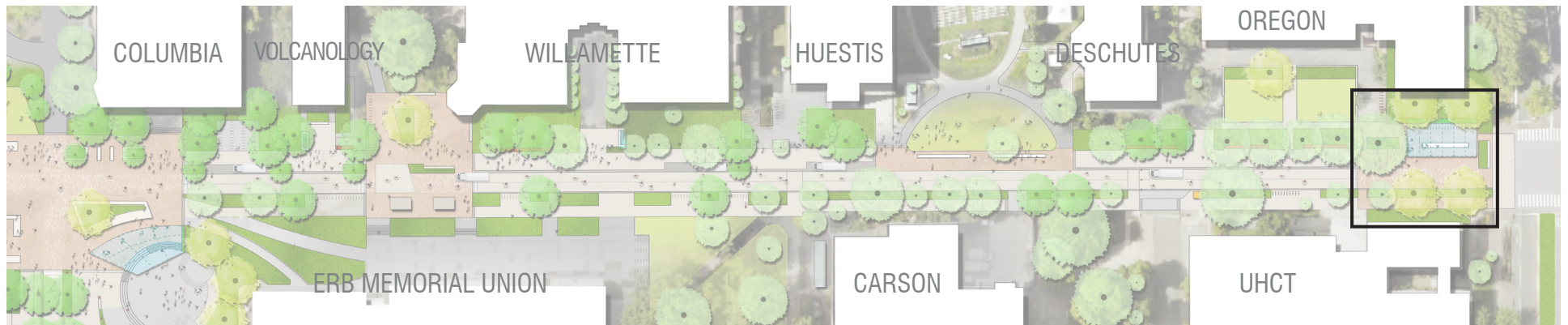
- Circulation focus
- Design organizes pedestrian/bike interactions
- Bike parking and repair station: a hub for cyclists
- Pedestrian-only area outside Willamette entrance

SCIENCE GREEN PLAZA



- Extends lawn
- Simple formal design with grand seating elements
- Consider removal of existing street trees to open views and extend the space across street
- New planting to screen Carson loading dock

AGATE PLAZA



- Transition to pedestrian priority space (13th)
- Arrival, drop-off/pick-up (ride share location)
- Pavilion / rain shelter
- Meeting point
- Food & beverage carts and trucks
- UHCT passenger loading*

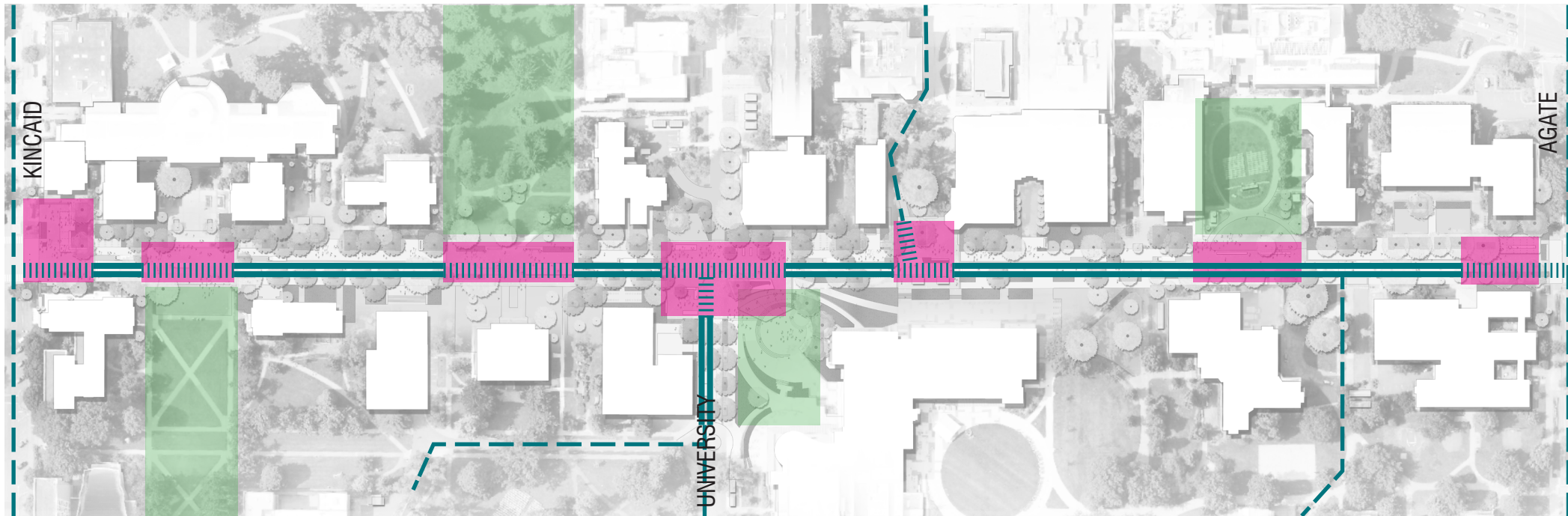
SYSTEMS

PRIMARY PEDESTRIAN CIRCULATION



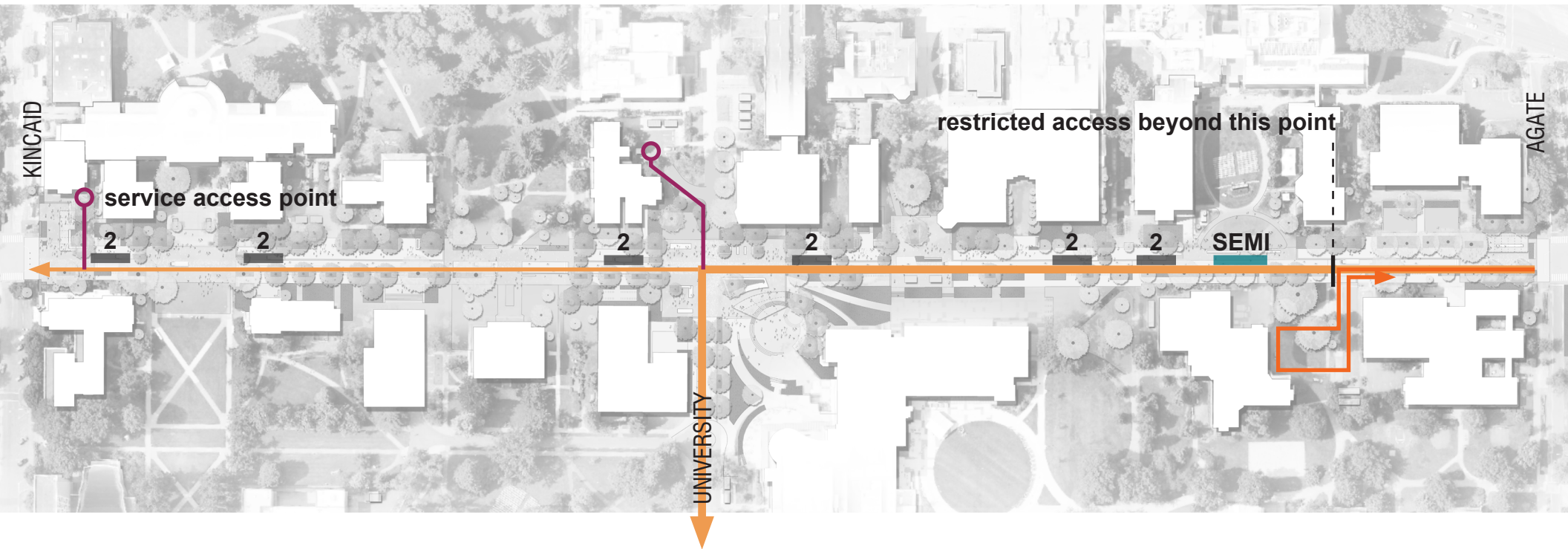
- pedestrian walks on both sides of the street
- connections to primary campus walks
- mixing zones at plazas (pedestrian priority)
- occasional crossing points between plazas

BIKE CIRCULATION



- separated bike/wheels zone between plazas
- (2) 8.5' lanes
- westbound lane shared with vehicles)
- mixing zones at plazas (pedestrian priority)
- connections to primary campus bike routes

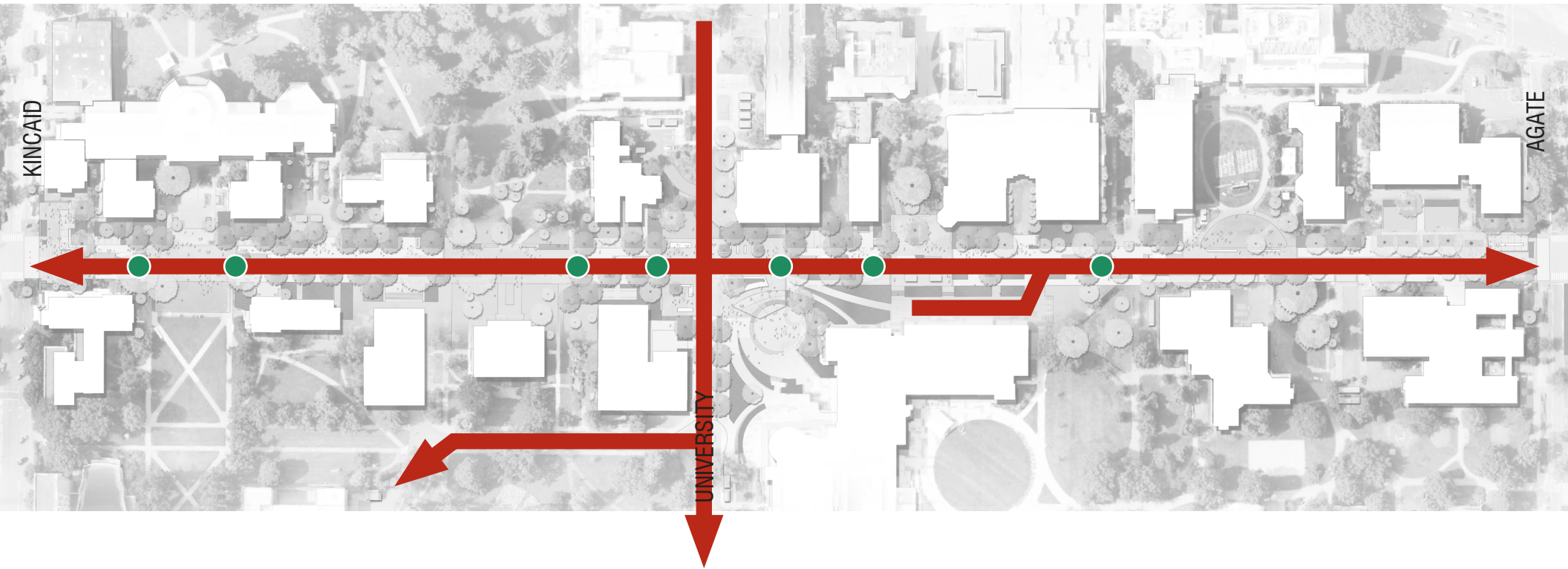
SERVICE & DELIVERY: ACCESS & PARKING



- restricted access beyond Carson turnaround
- westbound only
- bikes/wheels and vehicles in same lane
- distributed parking/loading (12 spaces only) for delivery and contractor use only
- semi truck deliveries to Carson in-lane (off hours only)

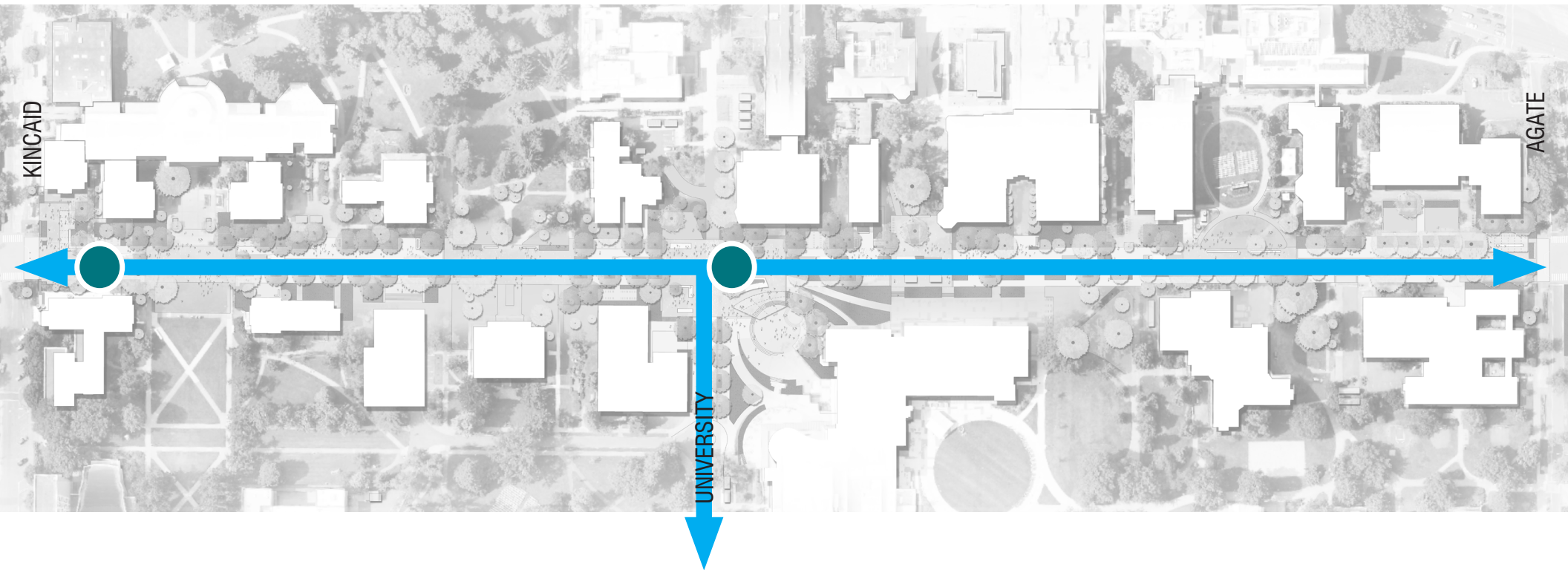


EMERGENCY ACCESS



- 20' clearance standard through corridor
- periodic segments of 17' clear (at planters, less than 20' long)

SHUTTLE ROUTE



- **Fixed stop shuttle** operates after 5:30 pm (westbound on 13th, southbound on University)
- **Non-fixed stop shuttles** (daytime) westbound on 13th

BIKE PARKING

900 bike capacity within project area (1,020 existing)

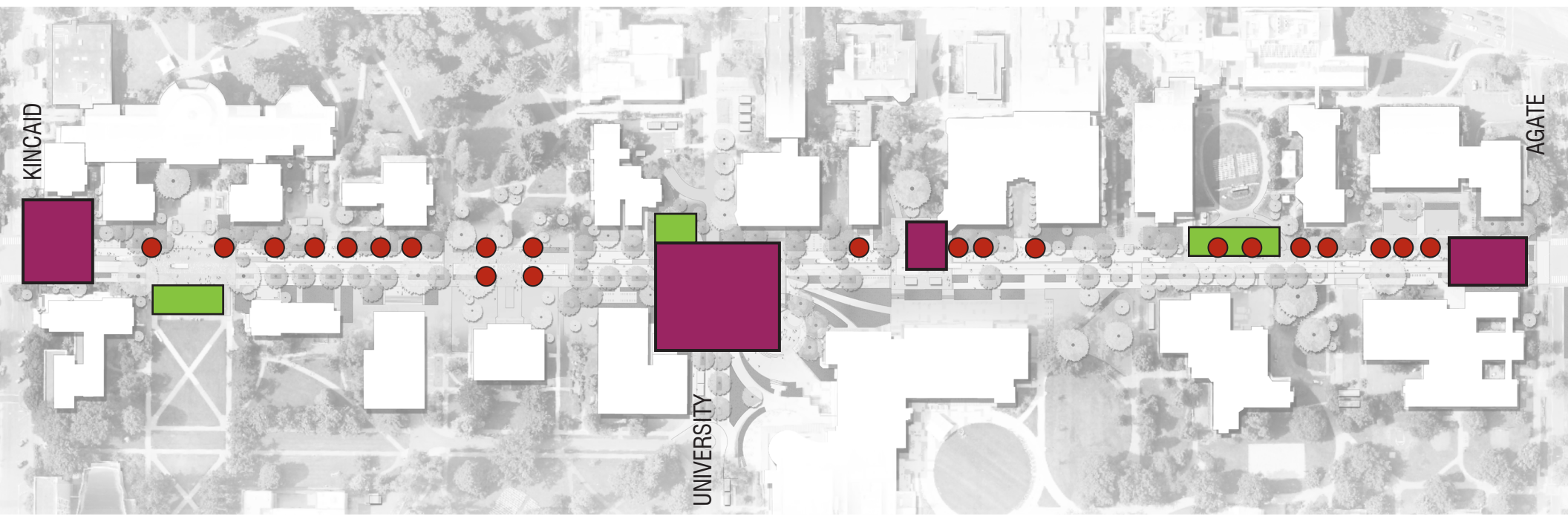
- corral (40 - 120 bikes)
- row (20)
- covered (20)
- bike repair station



- Bike racks in clusters: rows and corrals
- Distributed through corridor, outside plazas/open space corridors
- Locations not adjacent to bike zones are near plazas (dismount before entering pedestrian walks)



SOCIAL SPACES



hubs



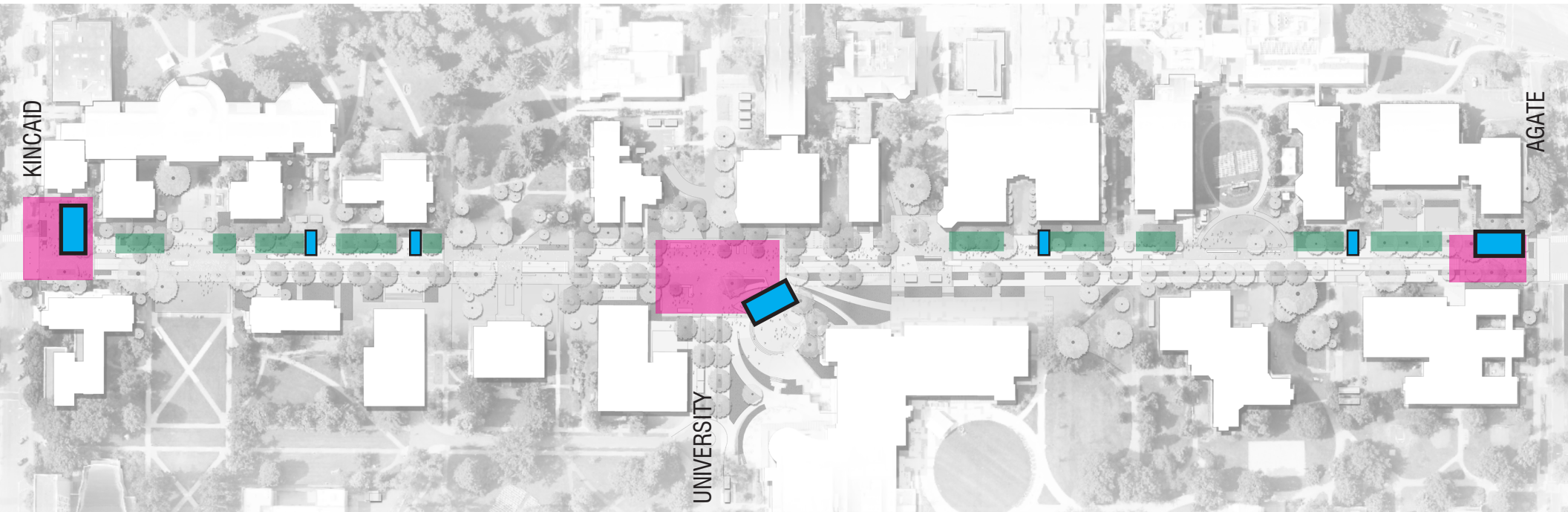
seating spots



lawns

RAIN PROTECTION

- 2 types of shelter, distributed along corridor
- Consider covered seating at buildings

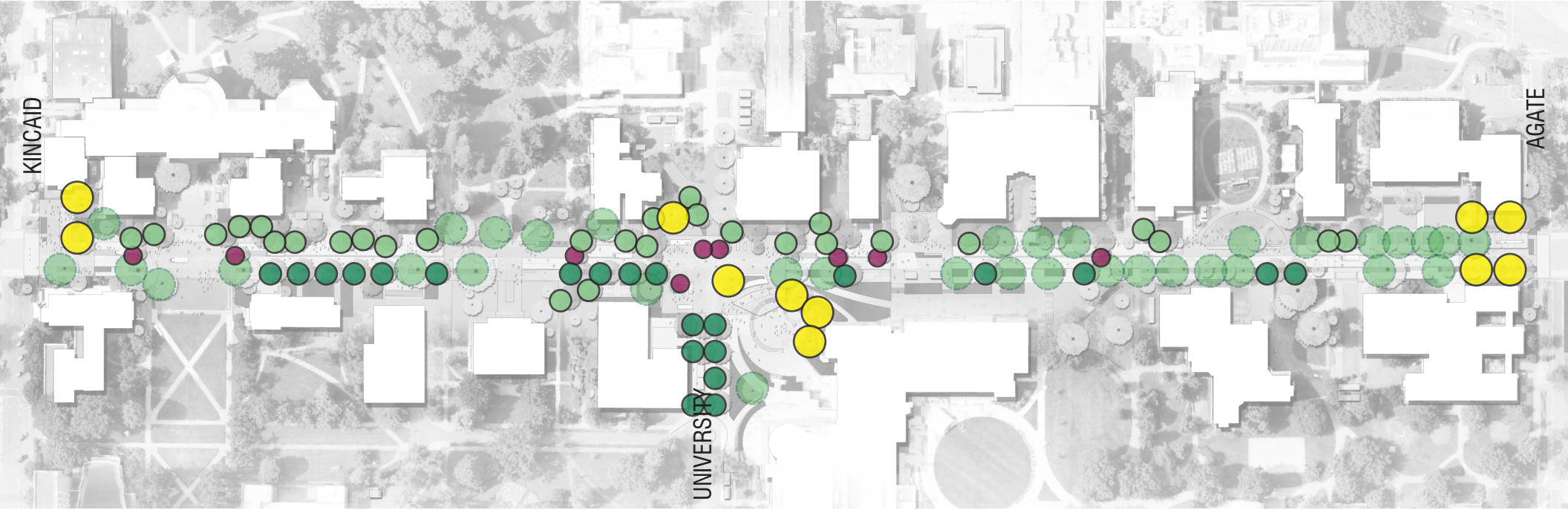


social pavilions



quiet shelters

NEW TREES



naturalized planting area



street infill

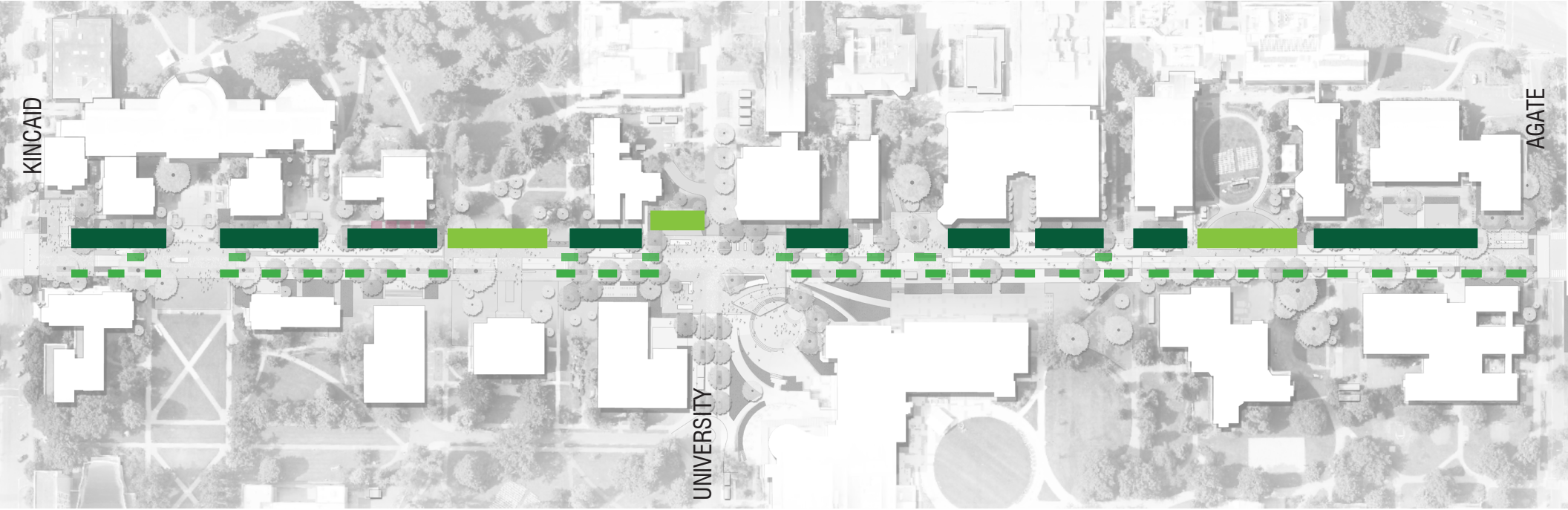


hub



accent

PLANTING CONCEPT



- Large canopy trees - both sides of street
- Wide naturalized planting to north
- New/extended lawns

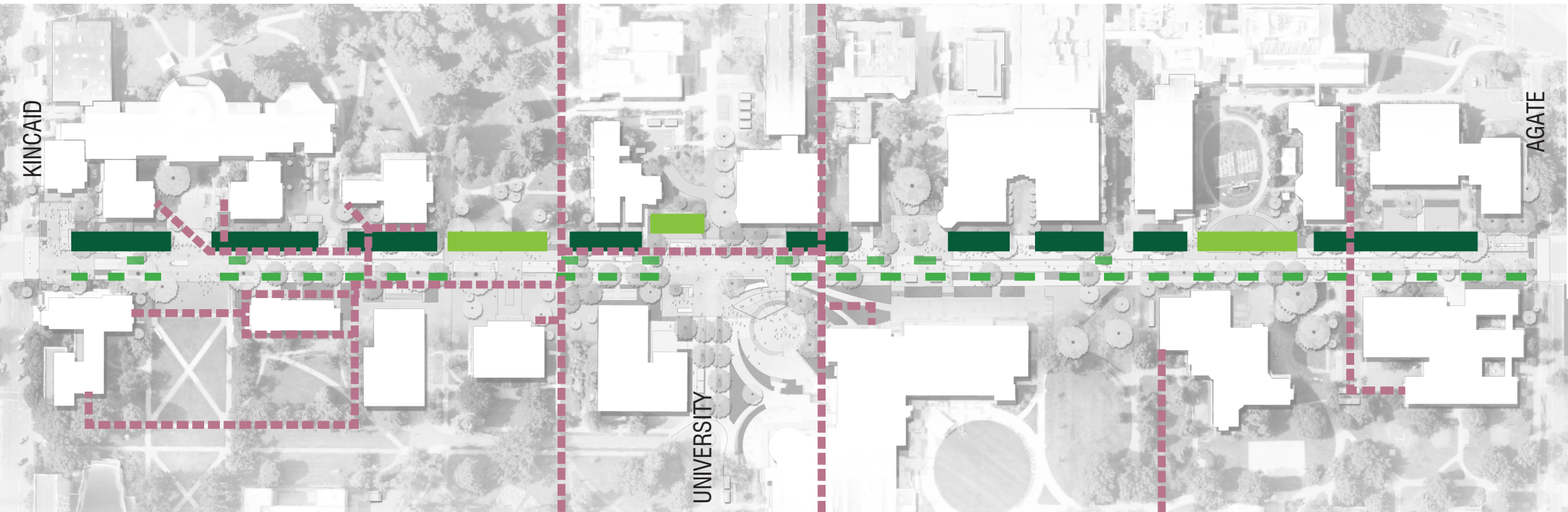


 naturalized planting area

 street planting

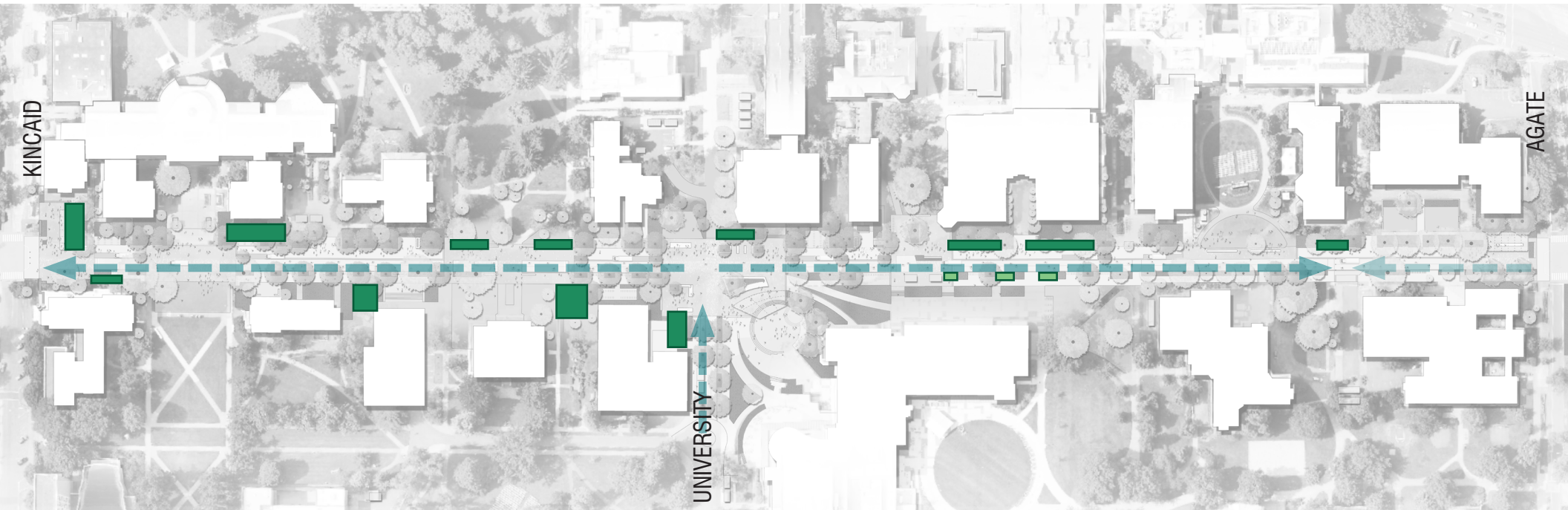
 lawn

TUNNELS



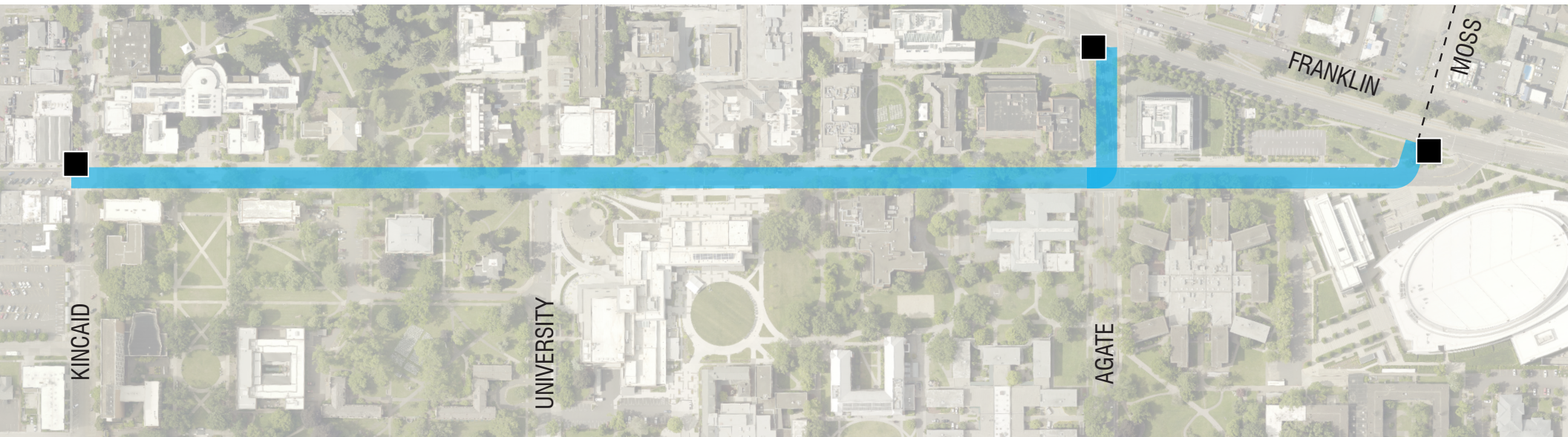
- Tunnels are 8 - 9' wide
- Clearance to finish grade varies
- Planting above is possible by raising planting area
- Tunnels can accommodate additional loads
- Actual locations and depths to be verified in future design phases

STORMWATER TREATMENT OPPORTUNITIES



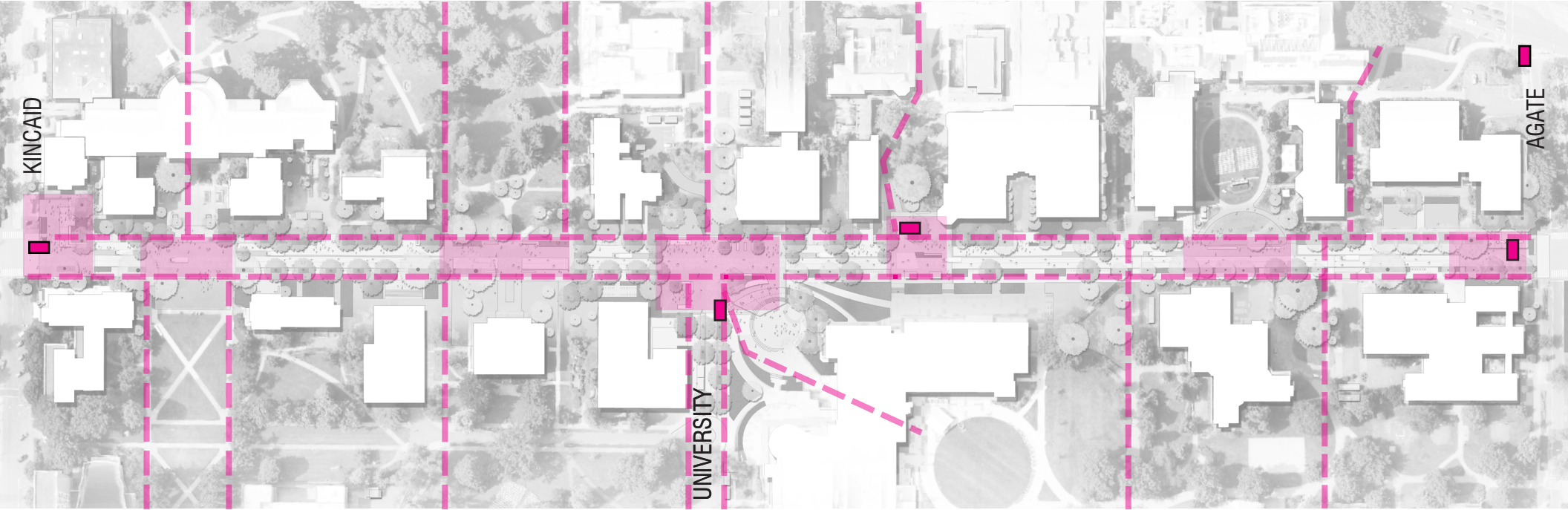
- Large stormwater treatment gardens next to pedestrian paths
- Some outside street corridor, in adjacent sites
- Goal is to treat all runoff in stormwater treatment gardens
- Sizing based on 5% of impervious surface of drainage area
- Educational and place-making opportunities
- Strategies and locations to be evaluated in future design phases

CAMPUS GATEWAY FEATURES



- Consistent gateway element at campus entrances (future design project)

CAMPUS MAP STATIONS



- Campus standard map station at key locations (new or relocated)

ASUO FAIRE SETUP



- Focus tents and activities on north side, in 17' pedestrian zone
- Bike/wheels area used for pedestrian circulation
- Can expand to south side, between trees (remove bike racks)
- Can expand into Kincaid Plaza and Campus Heart

PHASING

PRELIMINARY PHASING CONCEPT - Option 1



- Can be implemented in segments
- Does not need to be in sequence (e.g. east to west)
- Each phase to begin and end at a plaza

PRELIMINARY PHASING CONCEPT - Option 2



PHASING CONCEPT Option 2

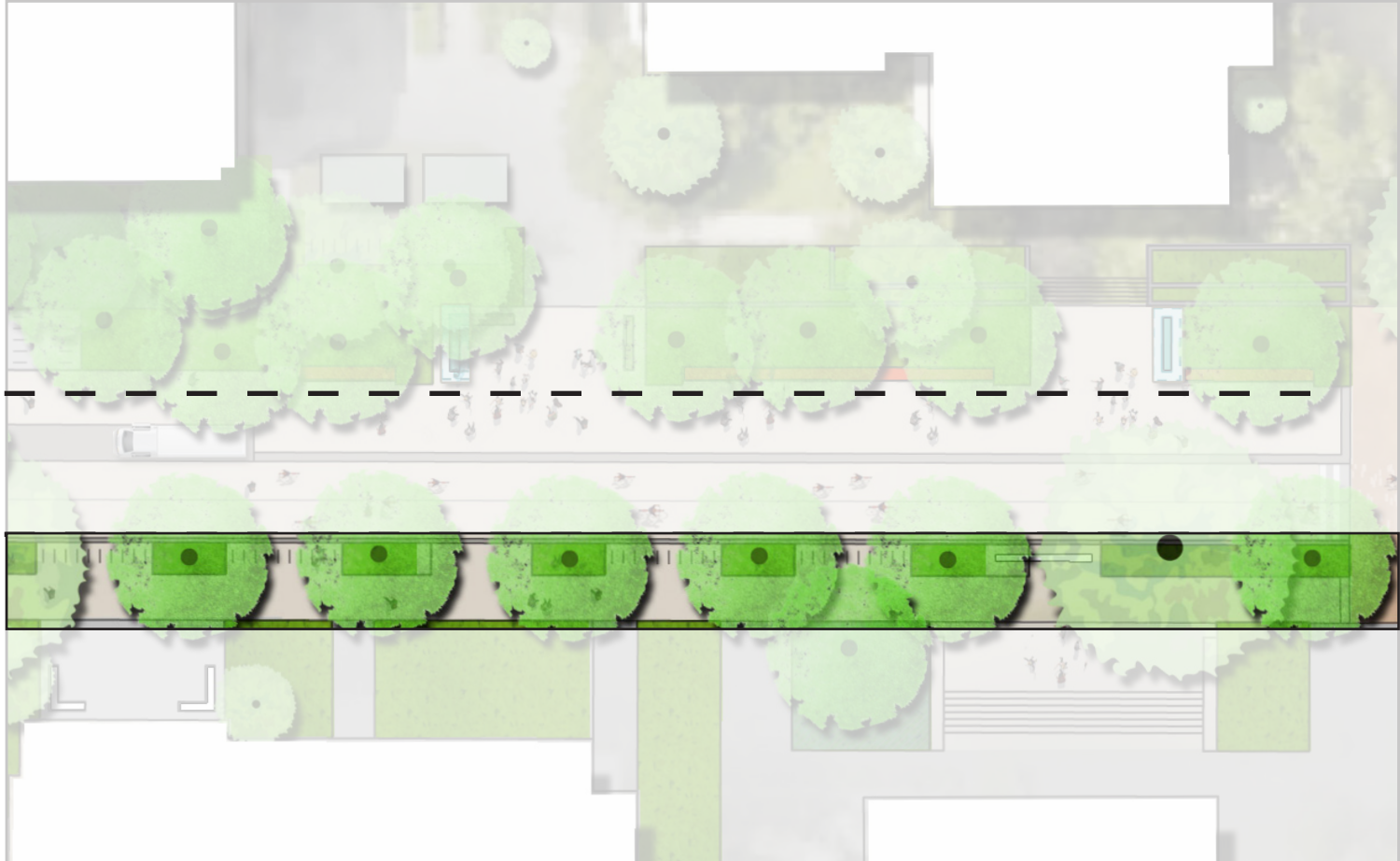
FIRST PHASE:
BIKE AND PED CIRCULATION



PHASING CONCEPT - Option 2

FIRST PHASE:
BIKE AND PED CIRCULATION

SECOND PHASE:
ADDITIONAL PED CIRCULATION



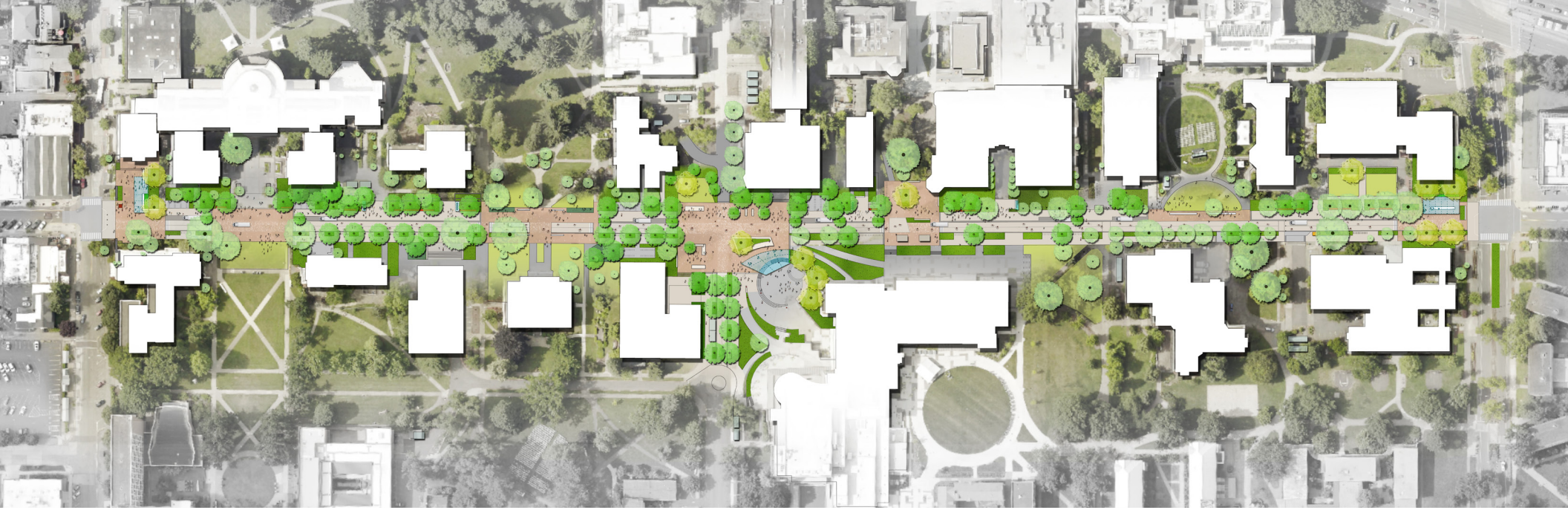
PHASING CONCEPT - Option 2

THIRD PHASE:
PLANTING / AMENITY ZONE

FIRST PHASE:
BIKE AND PED CIRCULATION

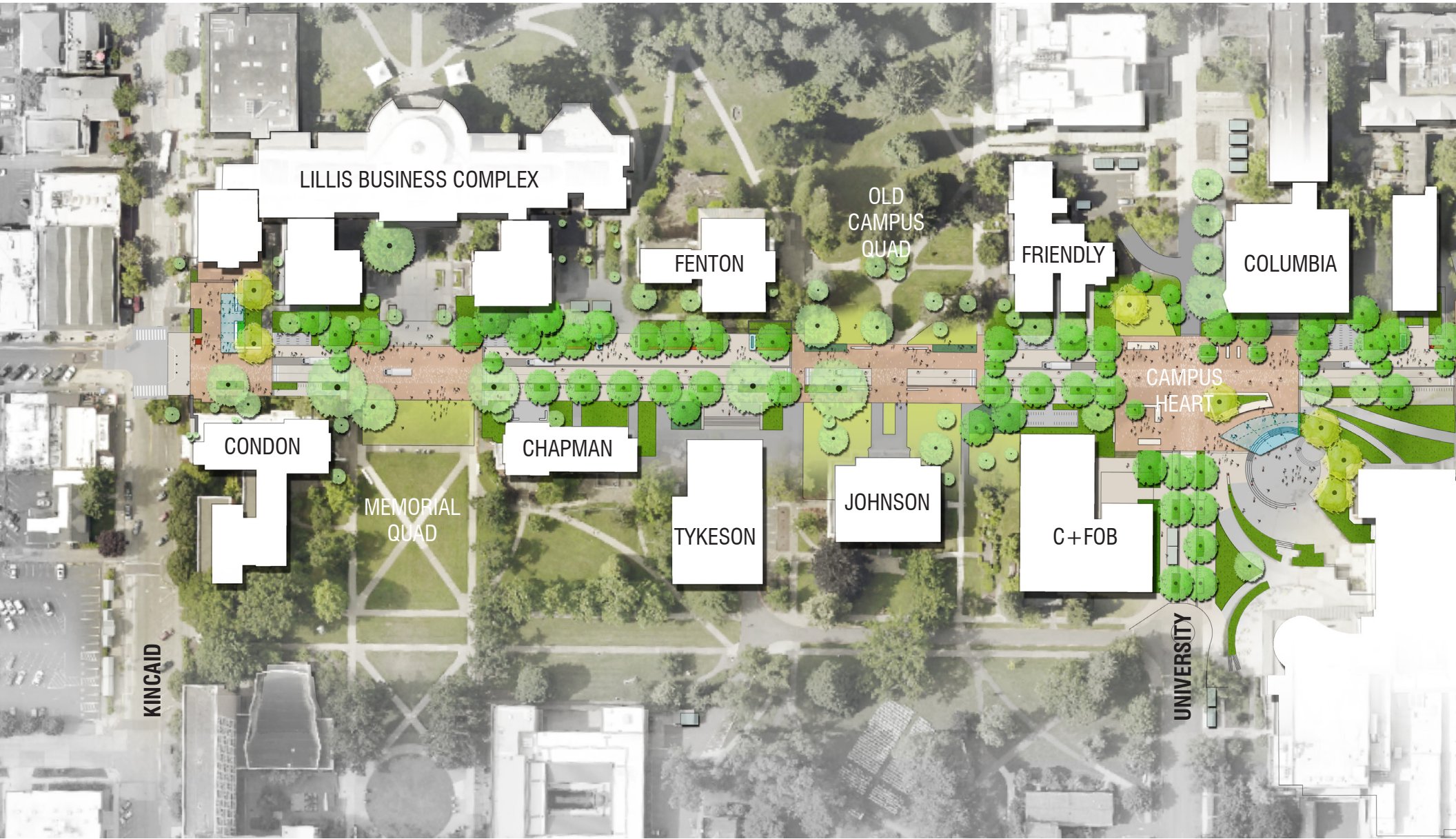
SECOND PHASE:
ADDITIONAL PED CIRCULATION





DISCUSSION

CORRIDOR PLAN - WEST



CORRIDOR PLAN - EAST

