



UO Motor Pool

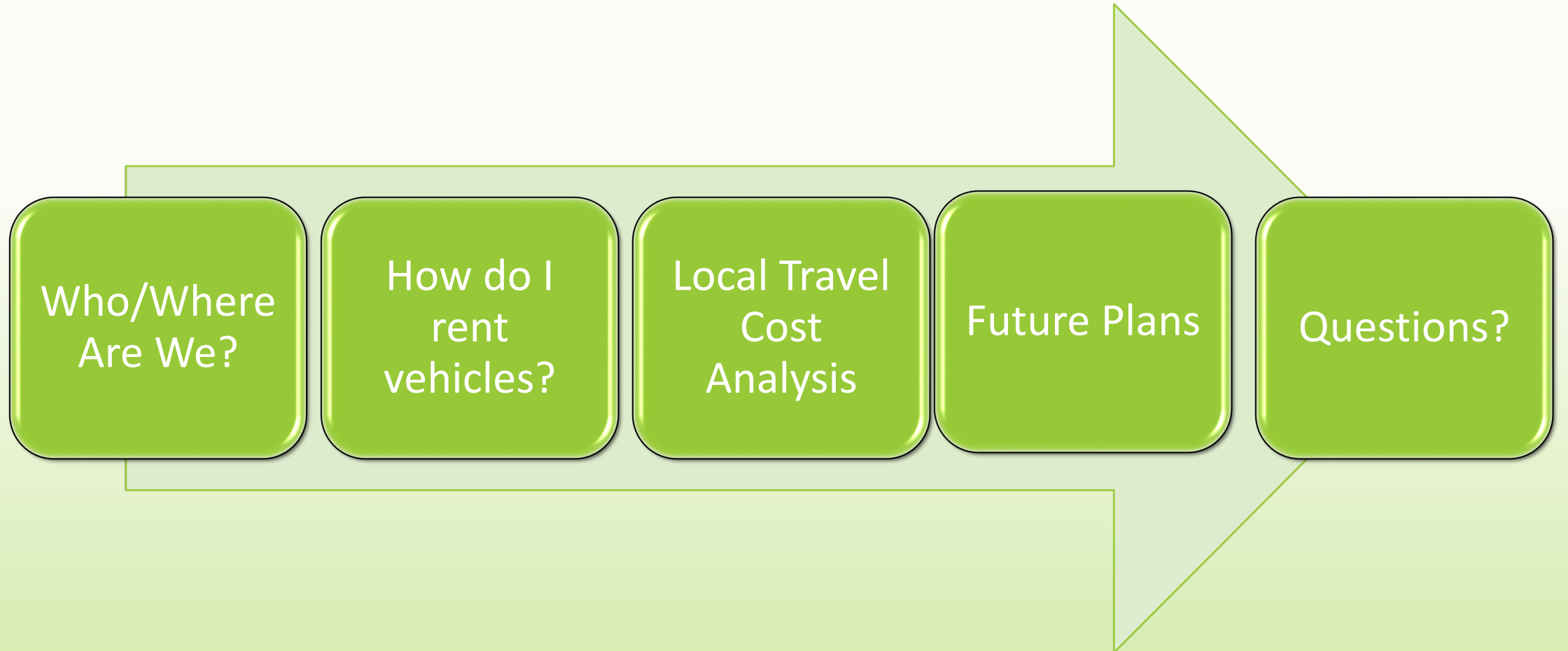
The Cost-Effective Solution for Local University Travel



UNIVERSITY OF
OREGON

Transportation
Services

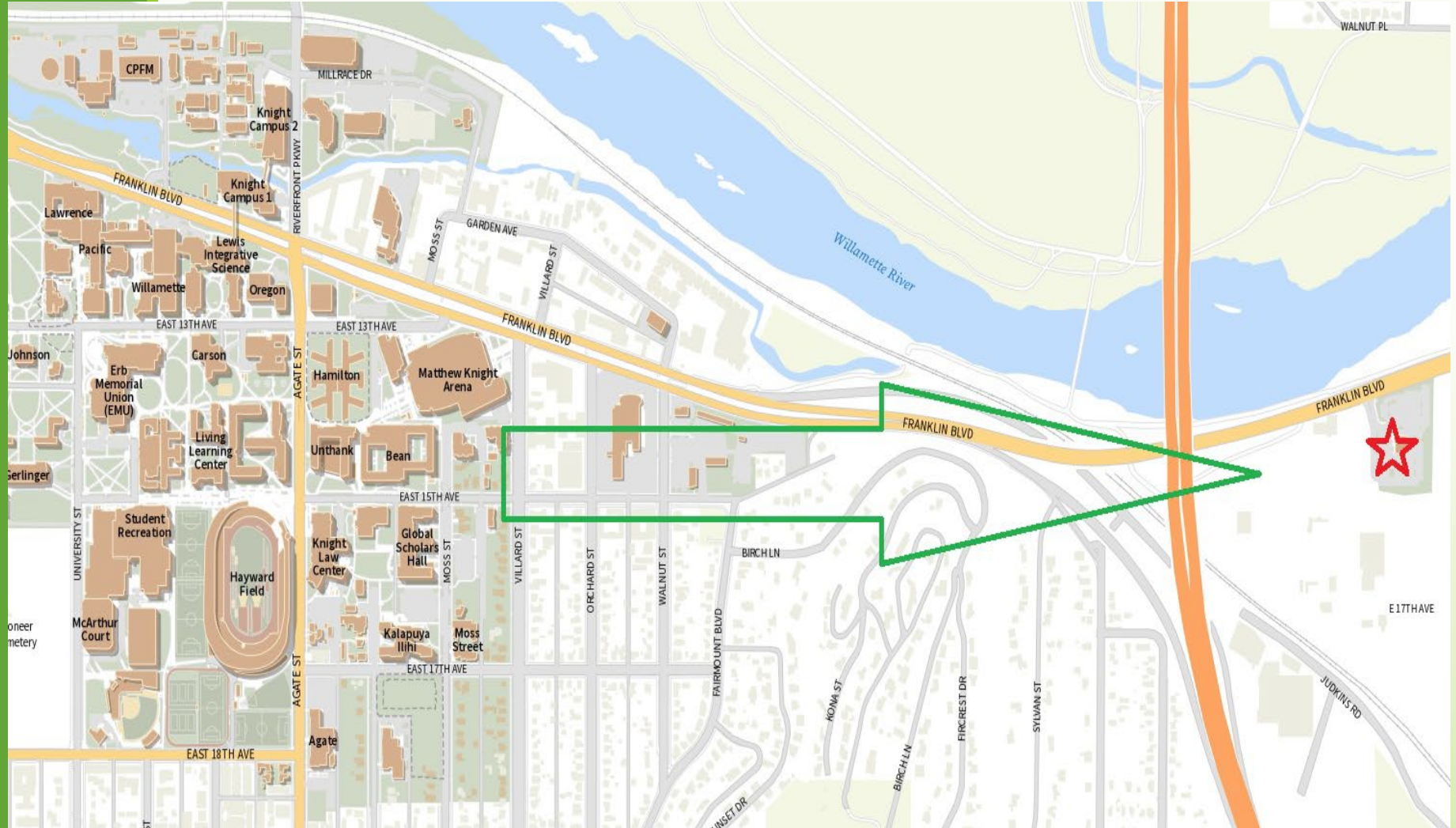
Overview



Minutes from Campus!

UO Motor Pool
3233 Franklin Blvd.
Eugene, Or. 97405

- Safe, Secure Parking
- UOPD Patrolled
- 24-hour Access
- Bike Parking
- Open 8-5 Monday - Friday



Get to know our fleet of 41 new 2025 vehicles!

- **21 Ford Transit 12-Passenger Vans
(Including 1 Cargo Van conversion)**
- **4 Ford F150 4x4 Pickup Trucks
(Two with canopies; all with
towing capability.)**
- **6 Ford Escape Hybrid AWD SUVs**
- **6 Toyota Corolla Hybrid Sedans**
- **4 Toyota Sienna Mini Vans**





Vehicle Rates

<i>Toyota Corolla Sedan</i>	<i>(Seats 5)</i>	<i>\$39.00 per day</i>	<i>.25 per mile</i>
<i>Ford AWD Escape</i>	<i>(Seats 5)</i>	<i>\$70 per day</i>	<i>.25 per mile</i>
<i>Toyota Sienna Mini-van</i>	<i>(Seats 8)</i>	<i>\$73 per day</i>	<i>.36 per mile</i>
<i>Ford F150 4x4 Truck</i>	<i>(Seats 6)</i>	<i>\$84 per day</i>	<i>.48 per mile</i>
<i>Ford Transit Van</i>	<i>(Seats 12)</i>	<i>\$137 per day</i>	<i>.40 per mile</i>

Monthly Rates Available!


Fuel Included!



Welcome to Fleet Commander!

<https://universityoforegon.agilefleet.com/fleetcommander/Welcome.asp>

FLEETCOMMANDER Bryne Hagstrom | [Log Out](#)

 UNIVERSITY OF OREGON

[Home](#) :: [Administration](#) :: [Help](#) :: [About](#)

VEHICLE USE

- MAKE RESERVATION
- MY SCHEDULE
- VEHICLE AVAILABILITY
- MY PROFILE
- MY REPORTS

INFORMATION

- INSTRUCTIONS
- TERMS AND SERVICES
- VEHICLES AND RATES
- LOCATIONS
- CONTACT US
- DOCUMENTS


Welcome

Motor Pool will be closed on Thursday, November 27th and Friday, November 28th

The University of Oregon Motor Pool provides safe, reliable, and cost-effective vehicle rentals to faculty, staff, and students traveling on behalf of the university. Our program supports a wide range of transportation needs across campus departments and units.

We offer a diverse fleet of university-owned vehicles, including sedans, minivans, SUVs, trucks, and 12-passenger vans. All vehicles are maintained to high safety and performance standards, and are available through a streamlined reservation process designed to meet the evolving needs of the university community.


Whether for short trips or extended travel, the Motor Pool is committed to delivering professional, dependable service that helps keep the University of Oregon moving forward.



Trip Check


The Oregon Department of Transportation provides cameras across Oregon's highways. For a full list of cameras click [here](#).

OR58 at Willamette Pass
Updated: Dec 01 2025 3:59 PM Looking West



Elevation 5090 TripCheck.com Milepost 62.00
Temperature 36.5F Wind W MPH 2

ORE126 at McKenzie
Updated: Dec 01 2025 3:58 PM Looking East



Elevation 1232 TripCheck.com Milepost 47.12
Temperature 41.5F Wind SE MPH 0

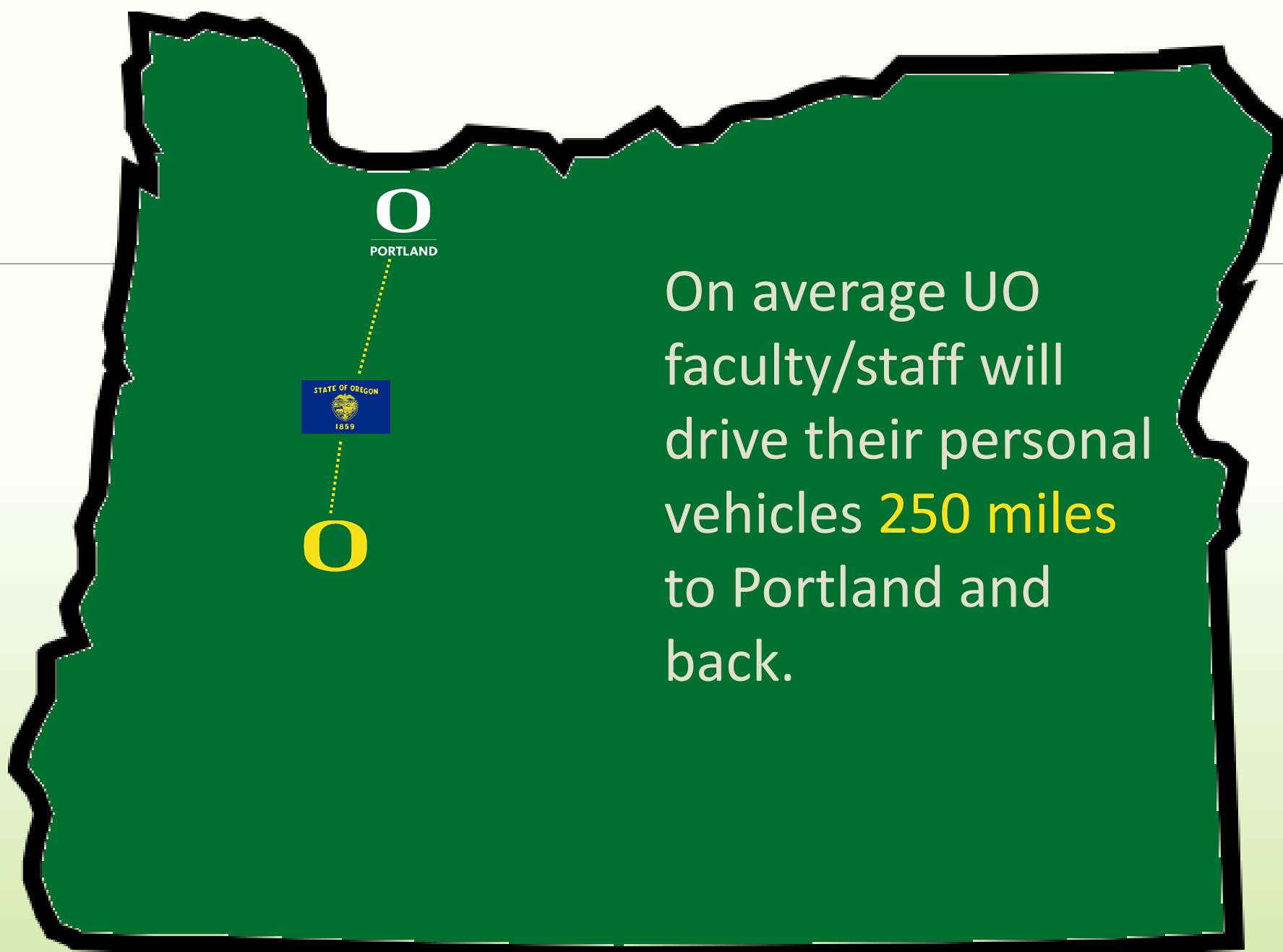
*Your Key to UO Travel!
Drive with the UO Motor Pool*



Eugene – Portland Trip

Sedan Cost Analysis





On average UO faculty/staff will drive their personal vehicles **250 miles** to Portland and back.

The UO reimburses \$0.70 per mile for personal vehicle travel

Average
Portland trip

$$250 \text{ Miles} \times \$0.70 = \$175.00$$

Department
Cost

UO Motor Pool Sedan cost

Daily Sedan
rate

$$\text{\$39.00} + 250 \text{ Miles} \times \text{\$0.25} = \text{\$101.50}$$

Department
Cost

Average cost of trip to Portland

\$180.00
\$170.00
\$160.00
\$150.00
\$140.00
\$130.00
\$120.00
\$110.00
\$100.00
\$90.00
\$80.00
\$70.00
\$60.00
\$50.00
\$40.00
\$30.00
\$20.00
\$10.00
\$-



Personal Vehicle



UO Motor Pool Sedan



Future Plans

- Sedans at the center of Campus!
- 24 hour automated key access!
- PDX Campus Vehicles!
- GPS Vehicle Locations!

Your Feedback Matters!

motorpool@uoregon.edu





UNIVERSITY OF
OREGON

Transportation
Services

Questions?

Contact Info:

UO Motor Pool
motorpool@uoregon.edu
541-346-2000

