

HOW TO USE THE CAMPUS PLAN



13th Avenue Axis, 2022

HOW TO USE THE CAMPUS PLAN

Plan Application

The *Campus Plan* is a University of Oregon document that defines the type and extent of campus development. It is a framework of patterns and principles that describe the university's requirements with respect to the physical development of university properties.

This Plan applies to:

1. University-owned Properties Within the Contiguous Approved Campus Boundaries

This Plan applies to university-owned properties within the contiguous Campus Boundaries as shown on Map 1, with the exception of properties that are ground-leased to an outside entity. Properties that are ground-leased shall comply with all lease requirements.

2. University-owned Properties Outside of the Campus Boundaries

This Plan also applies to university-owned properties outside of the Campus Boundaries. However, university review and approval of changes to these properties shall be as defined by the president following recommendations by the Campus Planning Committee and may include some or all of the principles within this document.

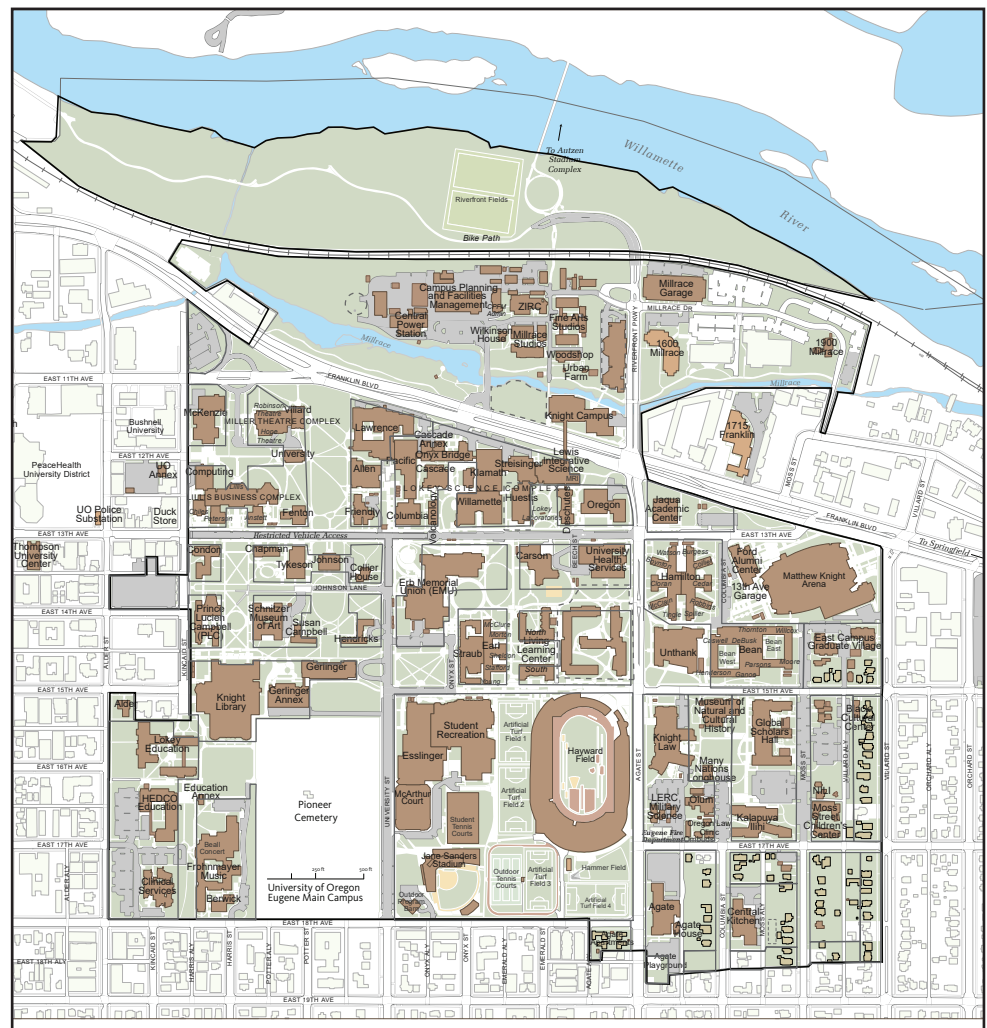
Refer to "Principle 1: Process and Participation" (page 21) for how this determination will be made. See Map 2 on the following page. Also, see Appendix I for a list of university-owned properties outside of the Approved Campus Boundaries.



Riley Hall UO owned property outside campus boundary, date unknown

3. University-controlled Properties

Properties that are fully leased and occupied by the University (e.g. properties leased from the UO Foundation) are subject to *Campus Plan* requirements to the degree applicable and in a manner similar to University-owned properties outside of the Campus Boundaries.



Map 1: University of Oregon Campus Boundary



Map 2: University-owned Properties + University Leased Properties in Vicinity of Campus
(Refer to Appendix I for a list of university-owned properties outside the campus boundaries, page 189.)

 - Leased  - Owned

Principle and Pattern Framework

Below is a description of the organization of the Plan and the key terms used throughout.

The next chapter, “Principles,” summarizes the twelve Campus Plan principles. It is followed by the twelve principle chapters, each of which sets forth principle refinements and patterns related to a specific principle.

The Plan is organized as follows:

CAMPUS PLAN PRINCIPLES

Principles are adopted methods that describe how to apply the Plan’s vision. They are expressions of the university’s requirements with respect to the physical development of university properties.

Examples are; “Principle 5: Replacement of Displaced Uses” and “Principle 8: Universal Access.” Principles apply to all development projects, as described in “Principle 1: Process and Participation” on page 21.

PRINCIPLE REFINEMENTS

Principle refinements provide greater definition to each principle. They apply to all development projects, as described in “Principle 1: Process and Participation” on page 21. For example the principle refinements for the “Universal Access” principle describe specific design modifications to achieve maximum accessibility in new and remodeled facilities.

PATTERNS

Patterns are design statements that describe and analyze how design issues might be resolved. In addition to the patterns that are included in the Plan, new patterns addressing specific issues will be developed during the planning phase of individual projects. (See “Principle 11: Patterns” on page 91.)

DESIGN AREA SPECIAL CONDITIONS

For the purposes of the Plan, the campus is divided into Design Areas, each of which has a distinct feel and history. Examples

are “Academic Center and Historic Core” and “Academic, Research, and Support Services.” “Principle 12: Design Area Special Conditions” (page 111) defines the special conditions to be considered as development occurs within a Design Area.

The following separate documents supplement the Plan:

SUBJECT PLANS

Subject Plans are created to address specific subjects or areas in greater detail. They are considered principle refinements. When adopted, they become part of the Plan, but they are contained in separate documents and do not require a public hearing process to adopt or amend. The *Campus Tree Plan* and the *Outdoor Sign Plan* are examples. (Refer to the diagram on the next page for a complete list.)

PROJECT SCHEMATIC DESIGNS AND SITING PLANS

Project schematic designs and siting plans are developed for construction projects. All are considered principle refinements. When adopted, they become part of the Plan, but they are contained in separate documents and do not require a public hearing process to adopt or amend.

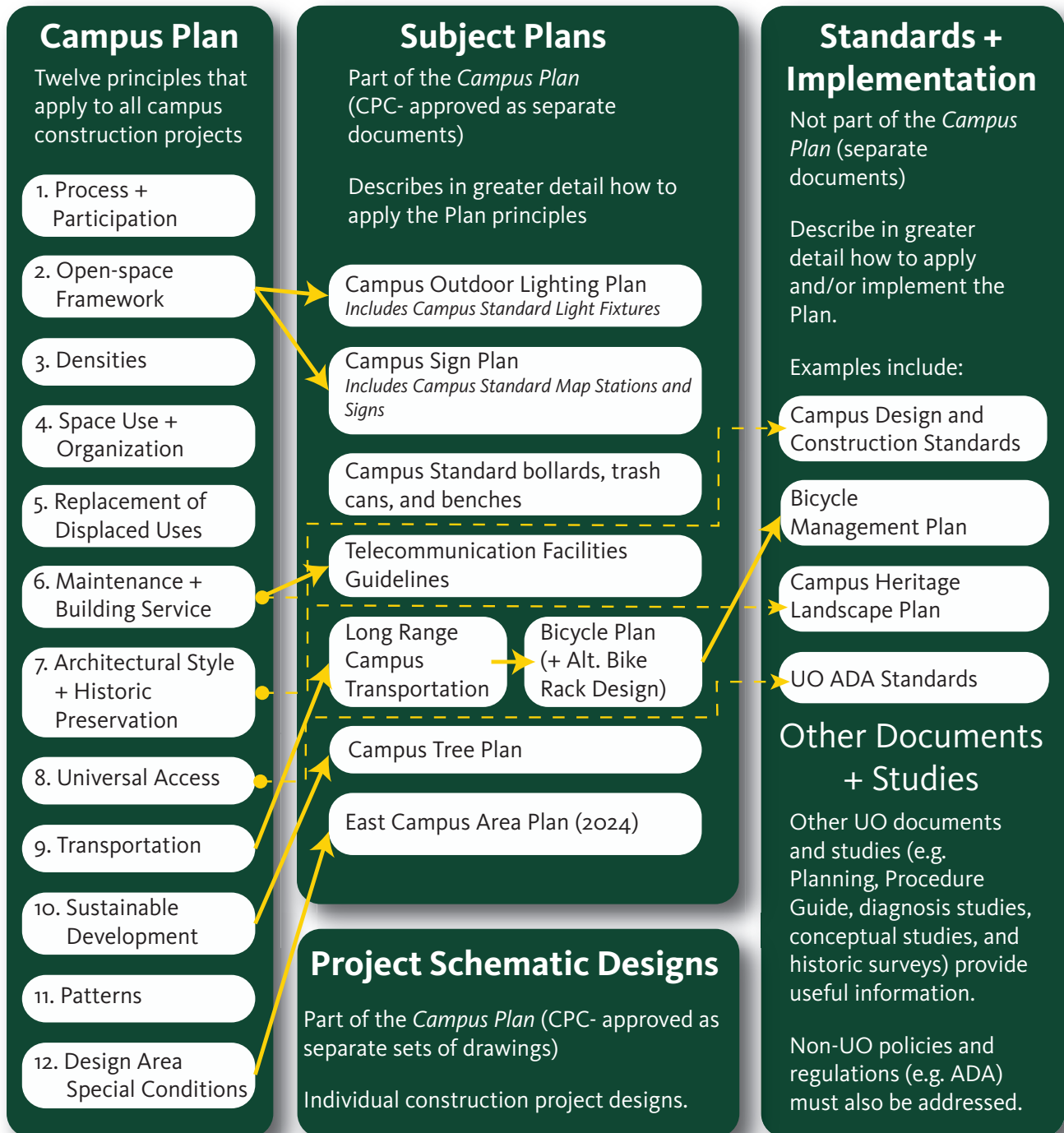
STANDARDS

Standards describe in greater detail than principle refinements how to apply Plan patterns and principles, in particular as related to the design of utilities, building systems, landscape materials and furnishings, exterior lighting, building finishes, maintenance, and service needs. They are not considered part of the Plan and are contained in separate documents. The *Campus Construction Standards* are an example.

OTHER UO DOCUMENTS AND STUDIES

Other UO documents and studies (e.g., Planning Procedure Guide, diagnosis studies, conceptual studies, and historic surveys) provide useful information.

Diagram of Campus Planning Documents



The Campus Plan and all subject plans are available at the Campus Planning Office (Campus Planning and Facilities Management office or online at cpfm.uoregon.edu/campus-planning)