

# Knight Library Preliminary Historic Assessment



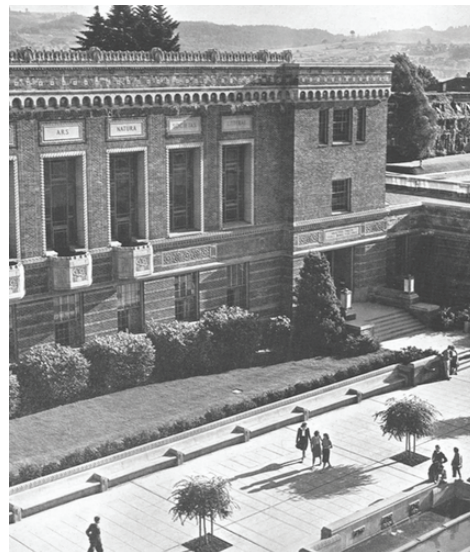
Knight Library, 1937  
unknown source

University of Oregon  
Campus Planning  
Campus Planning and Facilities Management

October 2022



Knight Library, Early 20th Century  
Lane County History Museum Digital Archives



Knight Library, 1940 (Oregana, 1941)

Additional information about the history of University Hall and campus development is available in the UO Campus Heritage Landscape Plan which can be found on the CPFM website: [cpfm.uoregon.edu](http://cpfm.uoregon.edu)

Historic images are courtesy the UO Archives unless noted otherwise. Building drawings are available from the Design and Construction Office.

#### PROJECT CONTACTS

Liz Thorstenson, Planning Associate  
Penina Ben Gershom, Student Employee  
Christine Thompson, Director

UNIVERSITY OF OREGON  
CAMPUS PLANNING  
CAMPUS PLANNING AND FACILITIES MANAGEMENT  
1276 University of Oregon  
Eugene, Oregon 97403-1276  
<https://cpfm.uoregon.edu/>

# KNIGHT LIBRARY

## PRELIMINARY HISTORIC ASSESSMENT

### TABLE OF CONTENTS

<b>Introduction .....</b>	<b>1</b>
<b>Significance.....</b>	<b>1-2</b>
<b>Timeline .....</b>	<b>3</b>
 <b>Surveyed Areas and Rankings</b>	
Exterior.....	4
North Facade.....	6
West Facade.....	9
East Facade.....	11
South Facade.....	13
Interior Features Summary .....	15
Interior Surveyed Areas and Rankings, Preliminary .....	16
Interior Character Defining Features, Stairwell East & West .....	20
Interior Character Defining Features, Basement.....	21
Interior Character Defining Features, 1st Floor.....	22
Interior Character Defining Features, 2nd Floor.....	27
Interior Character Defining Features, 3rd Floor.....	31
 <b>Treatment Recommendations .....</b>	 <b>34</b>
 <b>Details of Surveyed Areas</b>	
Exterior .....	38
Memorial Quadrangle .....	39
Knight Library Axis.....	42
 <b>Appendices:</b>	
Appendix A: Historic Ranking Methodology .....	44
Appendix B: 1935 / 2019 Floor Plans .....	46
Appendix C: 4.0 Survey of Buildings: Knight Library .....	56
Appendix D: Secretary of the Interior ‘s Standards for Rehabilitation ....	61
Appendix E: City of Eugene Zoning Map for Knight Library .....	62
Appendix F: 2017 Historic Knight Library Art & Architecture Guide.....	63

# INTRODUCTION

This assessment identifies the exterior (including landscape elements) and interior historic features and spaces of the 1937 Knight Library structure. This historic assessment does not apply to the subsequent 1950, 1966, and 1994 building additions. Understanding the building's historic significance is the first step to evaluating and preserving its valuable architectural and landscape features. This assessment is intended to be used as a resource when making recommendations for treatment of Knight Library during any alterations or additions.

The assessed areas are shown on the Surveyed Areas and Ranking map (pg. 4). Each area with potential historic significance is assigned a ranking of primary, secondary, or tertiary. This ranking is based on the level of historic significance (high, medium, or low) and level of integrity, defined as the degree to which the key historic elements are evident today (excellent, good, fair, or poor). Refer to Appendix A -- for a full description of the ranking methodology.

## SIGNIFICANCE

The 1937 Knight Library structure has high historic significance, good integrity and excellent condition, and is therefore a “primary” ranked historic building per the UO’s Campus Heritage Landscape Plan - 4.0 Survey of Buildings. It is listed in the National Register under criteria A (association with significant events) and C (distinctive architecturally).

**Building History (excerpts from the UO Knight Library Historic Survey):** Knight Library is the terminus for the Memorial Quadrangle and the Knight Library Axis, and is associated with resources such as other Lawrence buildings on the Memorial Quadrangle, Memorial Quadrangle, Knight Library Axis, Kincaid Green, and Southwest Campus Green. Ellis Fuller Lawrence’s original plan called for an auditorium to be built in this site, as the termination of the south axis and most important building in his beaux-arts plan. The axis extended from the auditorium to Dad’s Gates and beyond to the train station. However, the decision was made by President Hall to build a library in its place. The library was funded by the Public Works Administration (“PWA”) and the Works Program Administration (“WPA”) program funds and is representative of the last surge of building before WWII. The library has been referred to as Oregon’s best example of integrated art and architecture.

It is the most fully executed of Lawrence’s buildings incorporating sculpture, painting and metalwork, much done by students, graduates, and professors. Much of the interior artwork is mostly intact (see Appendix F: 2017 Historic Knight Library Art and Architecture Guide).

Knight Library, along with the Memorial Quadrangle, was listed on the National Register of Historic Places on March 9, 1990. The original Lawrence building from 1937 was nominated and listed and the 1950 and 1966 additions were listed as non-contributing. At the time the National Park Service accepted the building, the 1994 addition had yet to be built. The library was listed under A because it was funded by Public Works Administration funds and listed under C as a significant element in Lawrence’s Beaux Arts plan and for the fine craftsmanship displayed on the exterior and interior of the library. The original portion of the building is listed in the nomination as Beaux Arts Eclecticism while the additions are Modernistic. Some elements of the original design reflect a “moderne” character including the decorative motifs, and functional elements such as entrance lanterns.



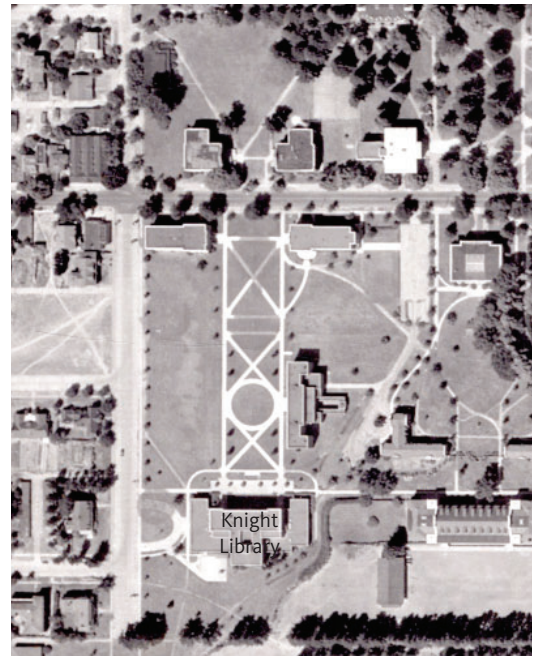
Knight Library, c1940  
Lane County History Museum Digital Archives



Knight Library, 1969  
Lane County History Museum Digital Archives



Campus Aerial Photograph, 1940



Campus Aerial Photograph, 1944

## ALTERATIONS

Although Knight Library has had three major additions (1950, 1966, and 1994), they were all built to the south (rear) facade, leaving the north (front) 1937 facade and the Memorial Quadrangle intact. For this reason, the significance of the 1937 building has not been diminished by the later additions.

- First addition: Lawrence (son, Abbot Lawrence), Tucker and Wallmann added 57,000 sq ft for additional stack space, mechanical room, elevators, stairs, ramps and Instructional Media Center in the basement, 1950.
- Second Addition: Claire K. Hamlin and B. King Martin added 100,000 sq ft, 1966.
- Third Addition, TBG Architects and Planners (Eugene); Shepley Bulfinch Richardson Abbott (Boston), design consultants added 132,000 sq ft, 1994.
- Asbestos abatement: 1991.
- Exterior restoration: 1984, and 2022.
- ADA Accessible Ramp: 1986.
- Misc. interior renovations: 1950 - 2022.

# TIMELINE - MAJOR REMODELS



Browsing room, date unknown



Circulation desk, date unknown



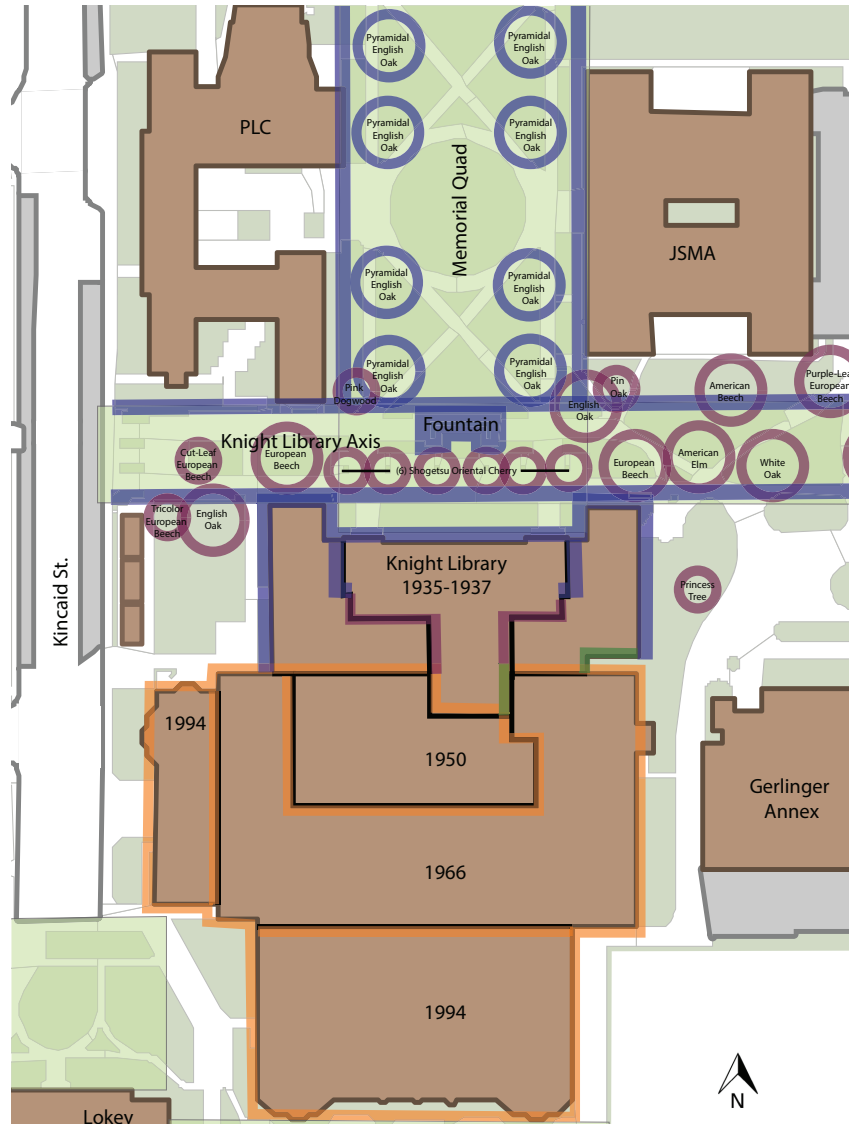
2nd Floor Browsing Room, 1937



North entry steps, c1940

- mid-1920s: Funding (approx. \$460,000) obtained for a new library as a Public Works Administration project
- 1935: Construction began on September 17
- 1937: The new building opened on May 3rd
- 1950: Addition. Architect: Lawrence, Tucker, and Wallman
- 1966: Addition. Architect: Clare K. Hamlin & B. King Martin
- 1969-1974: Multiple Utility Upgrades. Architect: Kroeker and Engineering & Design Assoc.
- 1984: Accessibility Ramp Addition/Exterior Restoration. Architects: Walter Gordon (Ramp) and Brockmeyer/McDonnell
- 1990: Listed on National Register of Historic Places on March 9th
- 1991: Fire Sprinklers & Fire Alarms installed
- 1993/94: 132,000 SF Addition. Architect: TBG Architects and Planners (Eugene); Shepley Bulfinch Richardson Abbott (Boston), design consultants
- 1994: Name changed to honor Philip Knight, President and CEO of Nike, Inc., and University of Oregon Alumni
- 2003: Basement Alterations. Architect: UO DSG and Charmichael Group
- 2004: Re-roof Project. Architect: Soderstrom
- 2022: Exterior restoration of brick and north entry doors

# SURVEYED AREAS & RANKINGS EXTERIOR



Ranking Key:



Primary



Secondary



Non-contributing

Key References:

Knight Library Historic Resource Survey Form: [https://cpfm.uoregon.edu/sites/cpfm2.uoregon.edu/files/knightlibrary05\\_30\\_07.pdf](https://cpfm.uoregon.edu/sites/cpfm2.uoregon.edu/files/knightlibrary05_30_07.pdf)

UO Summary Table of Historic Rankings & Designations: [https://cpfm.uoregon.edu/sites/cpfm2.uoregon.edu/files/histallindex\\_11-18-20151\\_o.pdf](https://cpfm.uoregon.edu/sites/cpfm2.uoregon.edu/files/histallindex_11-18-20151_o.pdf)

## **SUMMARY OF EXTERIOR PRIMARY RANKED SPACES - 1937 NORTH BUILDING**

### **NORTH FACADE**

Level of Historic Significance: High

- Primary facade
- Facade contributes to the character of Knight Library, the Memorial Quadrangle, and the Knight Library Axis
- Quality of the architectural craftsmanship and details

Level of Integrity: Good

### **WEST FACADE**

Level of Historic Significance: High

- Primary facade
- Facade contributes to the character of Knight Library and the Knight Library Axis
- Quality of the architectural craftsmanship and details

Level of Integrity: Good

### **EAST FACADE**

Level of Historic Significance: High

- Primary facade
- Facade contributes to the character of Knight Library and the Knight Library Axis
- Quality of the architectural craftsmanship and details

Level of Integrity: Good

### **SETTING**

Physical association with the Memorial Quadrangle and the Knight Library Axis

## **SUMMARY OF EXTERIOR SECONDARY RANKED SPACES - 1937 NORTH BUILDING**

### **UPPER SOUTH FACADE**

Level of Historic Significance: High

- Secondary facade
- Facade contributes to the character of Knight Library
- Quality of the architectural craftsmanship and details

Level of Integrity: Good

## **SUMMARY OF EXTERIOR TERTIARY AND NON-CONTRIBUTING RANKED SPACES**

### **LOWER SOUTH FACADE ADJOINING 1950 AND 1966 ADDITIONS**

Level of Historic Significance: Medium

- Tertiary and non-contributing facade
- Facade contributes to the character of Knight Library

Level of Integrity: Fair



# NORTH FACADE

RANKING: **PRIMARY**

LEVEL OF HISTORIC SIGNIFICANCE: **HIGH**

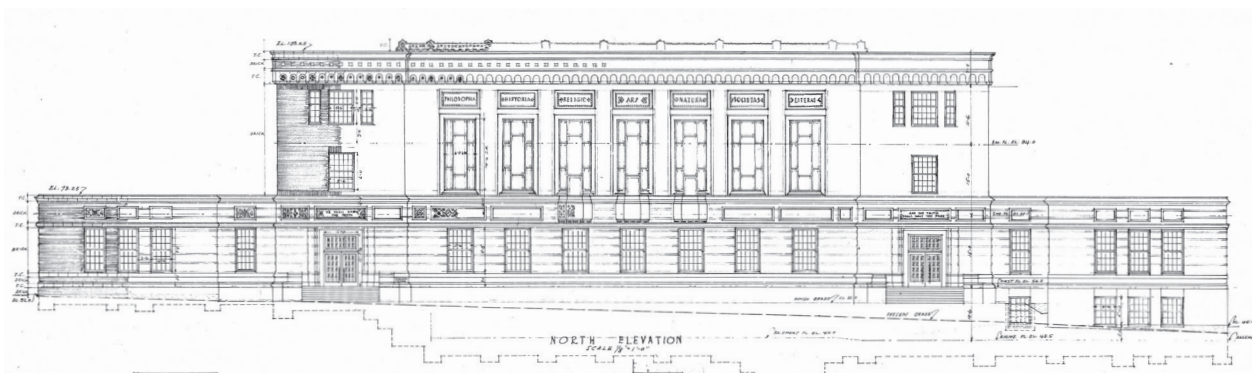
LEVEL OF INTEGRITY: **GOOD**

## EXISTING EXTERIOR FEATURES OF NOTE:

- Designed by Architect Ellis F. Lawrence
- Terminus for Memorial Quadrangle and Knight Library Axis
- Beaux Arts Eclecticism architectural style
- American bond brick and cast stone materials
- 15x15 multi-pane double-hung windows; 2nd story reading room windows with original ornamental pattern
- Cast stone belt courses, lettering & bas relief panels & balconies, parapet coping & cornice with heads, and brick 1st floor rowlock header courses
- Decorative metal entry doors; wrought iron artwork by O.B. Dawson
- Entrance lanterns
- Integrated art and architecture



Existing North Elevation, 2022



Knight Library North Elevation, 1935

## ALTERATIONS



Decorative door pull finials (rods are not original). Exterior door fire egress hardware, not original



Differences in joint compound, showing repairs



Exterior stair handrail, not original



Painted wood windows showing signs of weathering



Visible repair in stone and brick



Biological growth on brick and stone;  
staining



Brick efflorescence



Visible differences in brick and mortar  
repairs

# WEST FACADE

RANKING: **PRIMARY**

LEVEL OF HISTORIC SIGNIFICANCE: **HIGH**

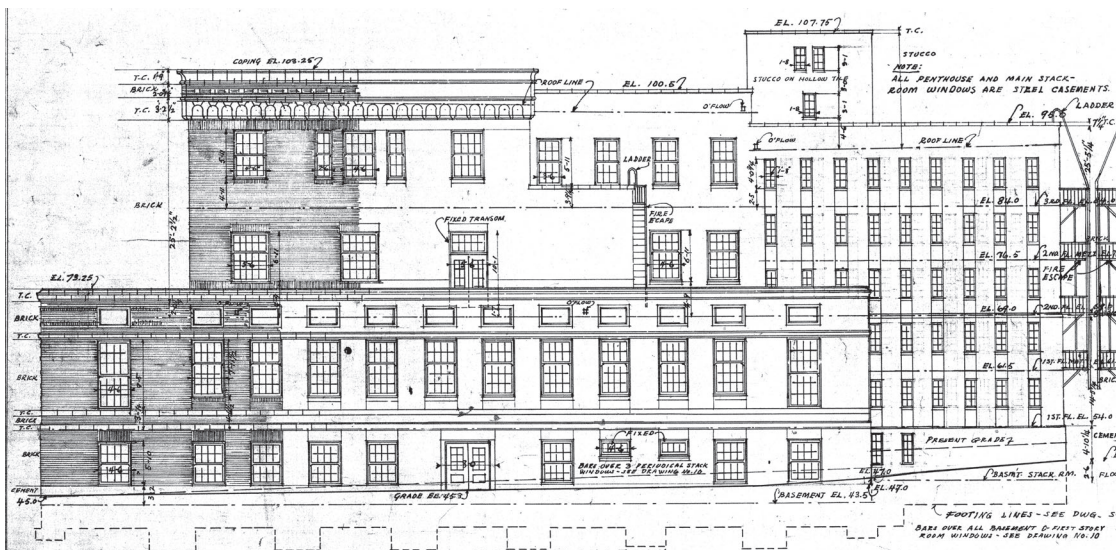
LEVEL OF INTEGRITY: **GOOD**

## EXISTING EXTERIOR FEATURES OF NOTE:

- Designed by Architect Ellis F. Lawrence
- Beaux Arts Eclecticism architectural style
- American bond brick and cast stone materials
- Cast stone belt courses, lettering & bas relief panels, parapet coping & cornice with heads, and brick 1st floor rowlock header courses
- Designed by Architect Ellis F. Lawrence
- Integrated art and architecture



Existing West Elevation (1937 portion of building), 2022



Knight Library West Elevation, 1935

## ALTERATIONS



Exterior doors and hardware, not original



Satellite dish on roof, not original



Painted wood windows showing signs of weathering



Biological growth on brick facade

# EAST FACADE

RANKING: **PRIMARY**

LEVEL OF HISTORIC SIGNIFICANCE: **HIGH**

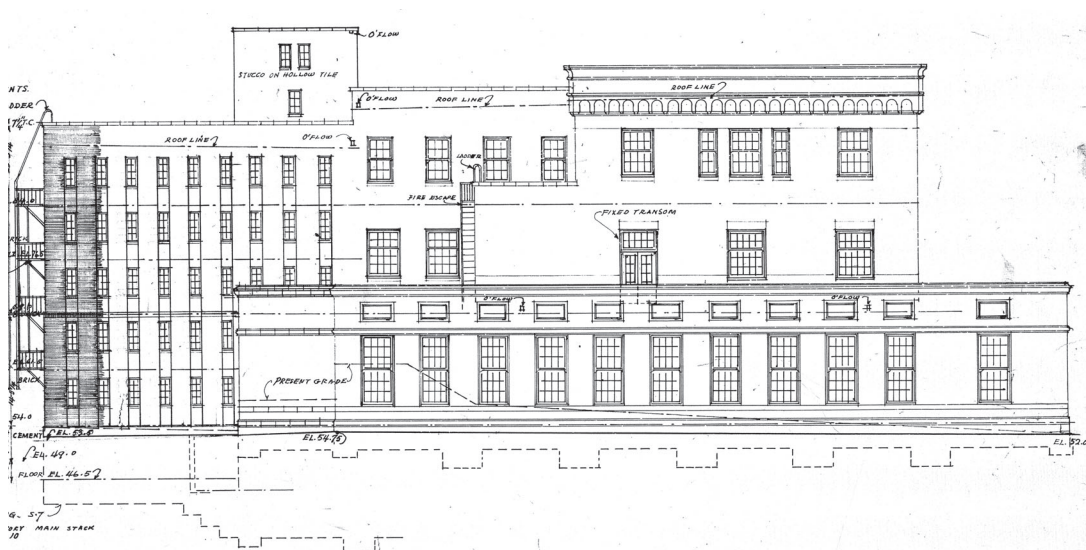
LEVEL OF INTEGRITY: **GOOD**

## EXISTING EXTERIOR FEATURES OF NOTE:

- Designed by Architect Ellis F. Lawrence
- Beaux Arts Eclecticism architectural style
- American bond brick and cast stone materials
- Cast stone belt courses, lettering & bas relief panels, parapet coping & cornice with heads, and brick 1st floor rowlock header courses
- Integrated art and architecture



Existing East Elevation (1937 portion of building), 2022



Knight Library North Elevation, 1935

# ALTERATIONS



Painted wood windows showing signs of weathering  
Biological growth on stone and brick



HVAC installed on roof, not original  
Biological growth on brick and stone



Biological growth on brick and stone;  
staining



East Library Garden, 1944 (redesigned  
in 2019 to accommodate a statue of  
Opal Whiteley)

## SOUTH FACADE

RANKING: **SECONDARY (PORTIONS ARE TERTIARY & NON-CONTRIBUTING)**

LEVEL OF HISTORIC SIGNIFICANCE: **HIGH (LOWER PORTION IS MEDIUM)**

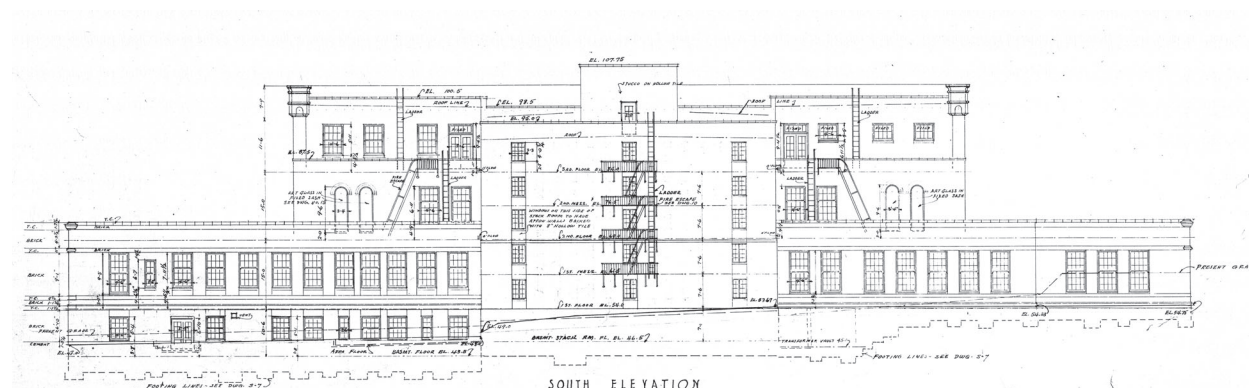
LEVEL OF INTEGRITY: **GOOD (LOWER PORTION IS FAIR)**

EXISTING EXTERIOR FEATURES OF NOTE:

- Designed by Architect Ellis F. Lawrence
- Beaux Arts Eclecticism architectural style
- American bond brick and cast stone materials



Existing South Elevation (1937 portion of building), Google Earth, 2022



Knight Library South Elevation, 1935



# ALTERATIONS



Roof ladder, not original



1994 south library addition, not original



1966 and 1994 south library additions, not original (southeast corner)



Biological growth on brick and stone; staining

## **INTERIOR**

### INTERIOR FEATURES OF NOTE:

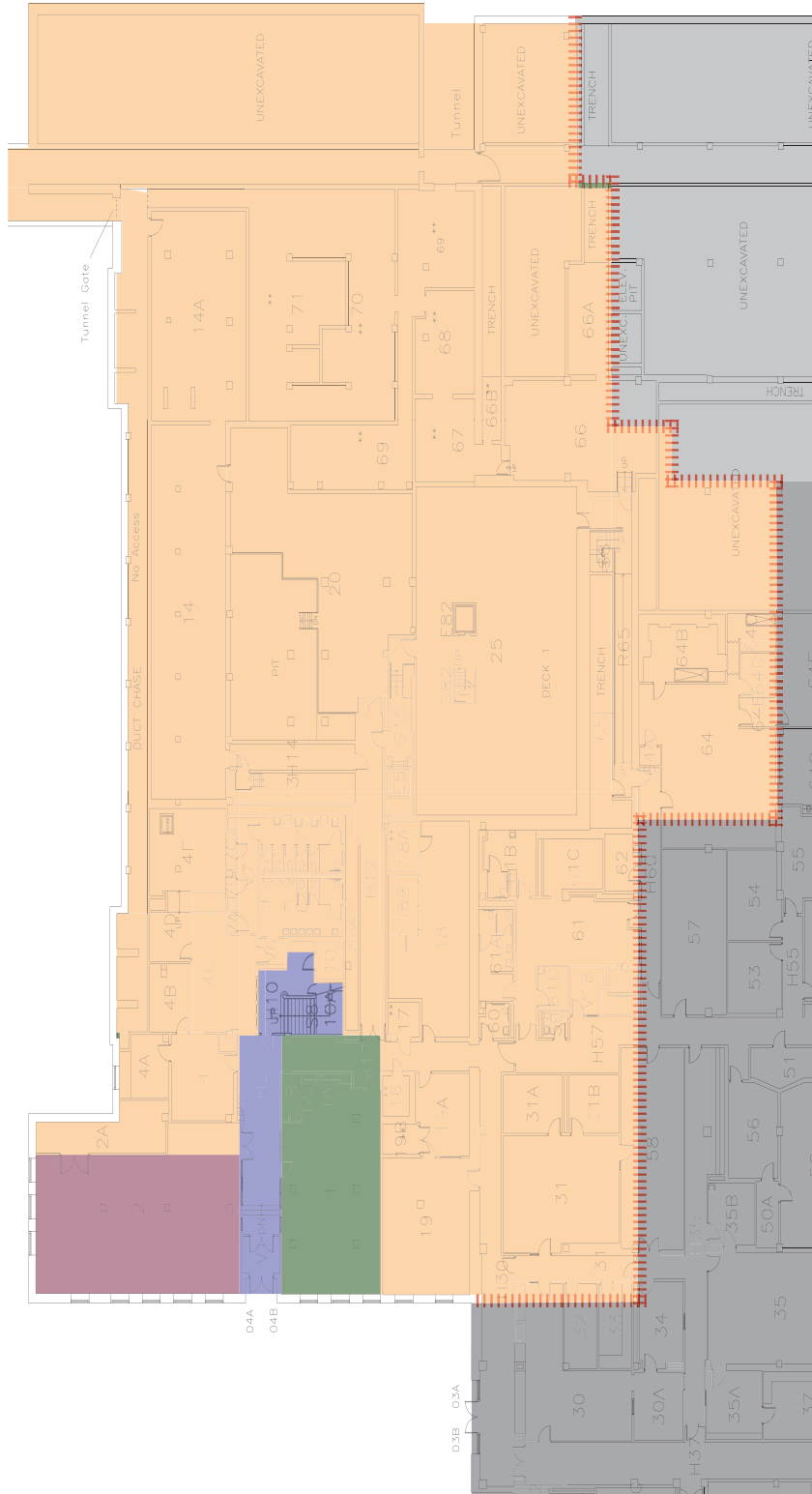
- Many historic spaces, materials and small-scale features remain intact. Much remains of the original interior, although successive alterations and additions to the south portion of the building have removed the original detail and spatial arrangements.

### INTERIOR CHARACTER DEFINING FEATURES INCLUDE:

- Original floor plan layout mostly intact, including reading rooms, phone booths, and stairwells
- Various original doors and windows
- Historic north side entry doors on the first floor
- Original wood windows and existing wood window trim
- Original interior design, art and architecture (See Appendix F)
- Original fixtures, such as lighting, decorative metal gates, interior and entrance doors, marble materials, and interior cornice (See Appendix F)
- Original hardware, such as various window and door hardware
- Original interior elements, such as rugs, furniture, draperies, and floor lamps (See Appendix F)

# SURVEYED AREAS & RANKINGS INTERIOR

## Surveyed Areas & Rankings - Preliminary Interior 2020 Basement Floor Plan



**BASEMENT PLAN**

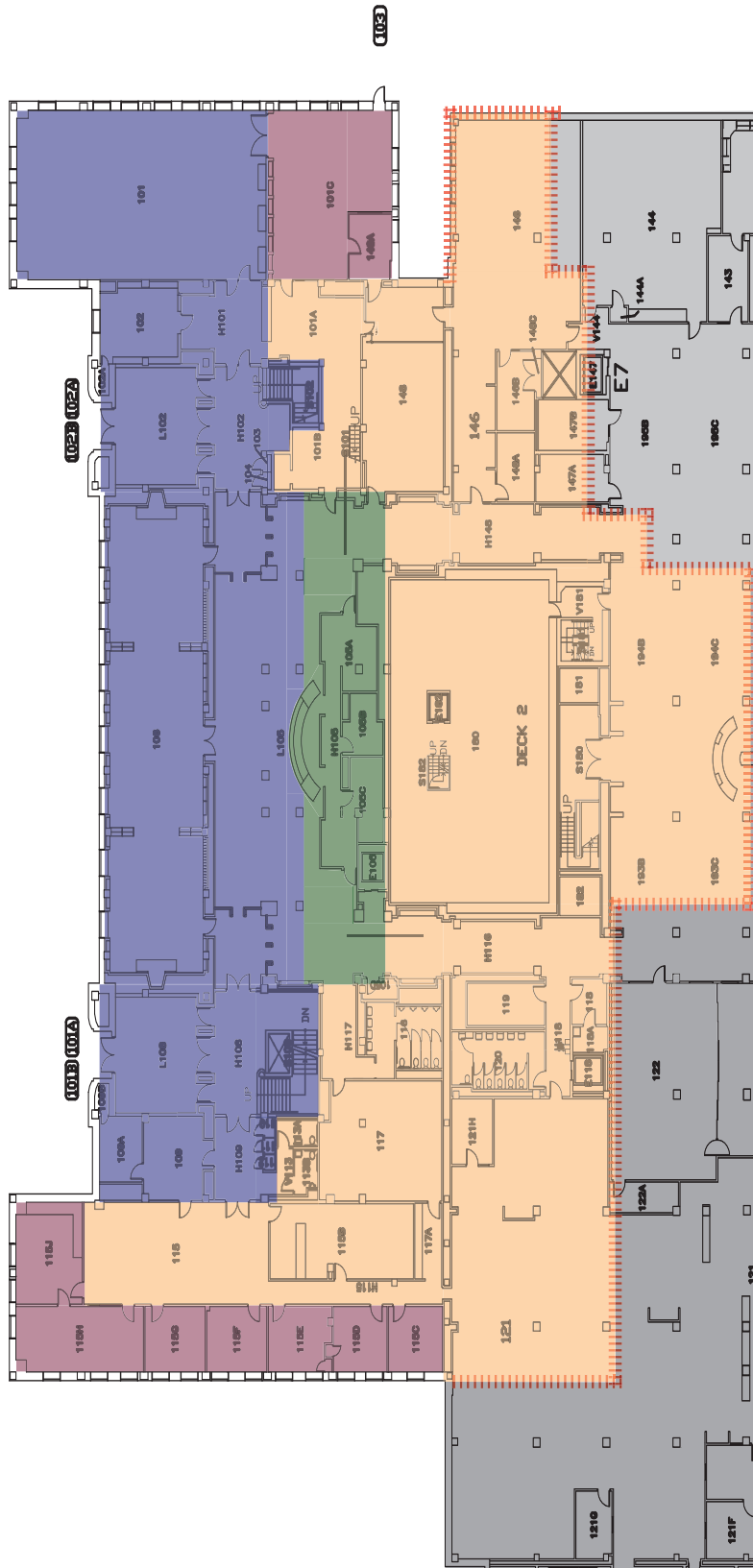
	FEET	32	64	SHEET	1	OF	39	DRAWN	1935	UNIVERSITY OF OREGON	BUILDING	18
								REVISED	01/20	Knight Library 1501 Kincaid Street		

Primary
  Secondary
  Tertiary
  Non-contributing

Other:  Not original

1950 Addition  
 1966 Addition

Surveyed Areas & Rankings - Preliminary  
Interior  
2019 First Floor Plan



FIRST FLOOR PLAN		UNIVERSITY OF OREGON		BUILDING 18	
Knight Library 1501 Kincaid Street		DRAWN 1935		REVISED 4/19	
SHEET 6 OF 39		FEET 32 64			

Other: Not original

Primary

Secondary

Tertiary

Non-contributing

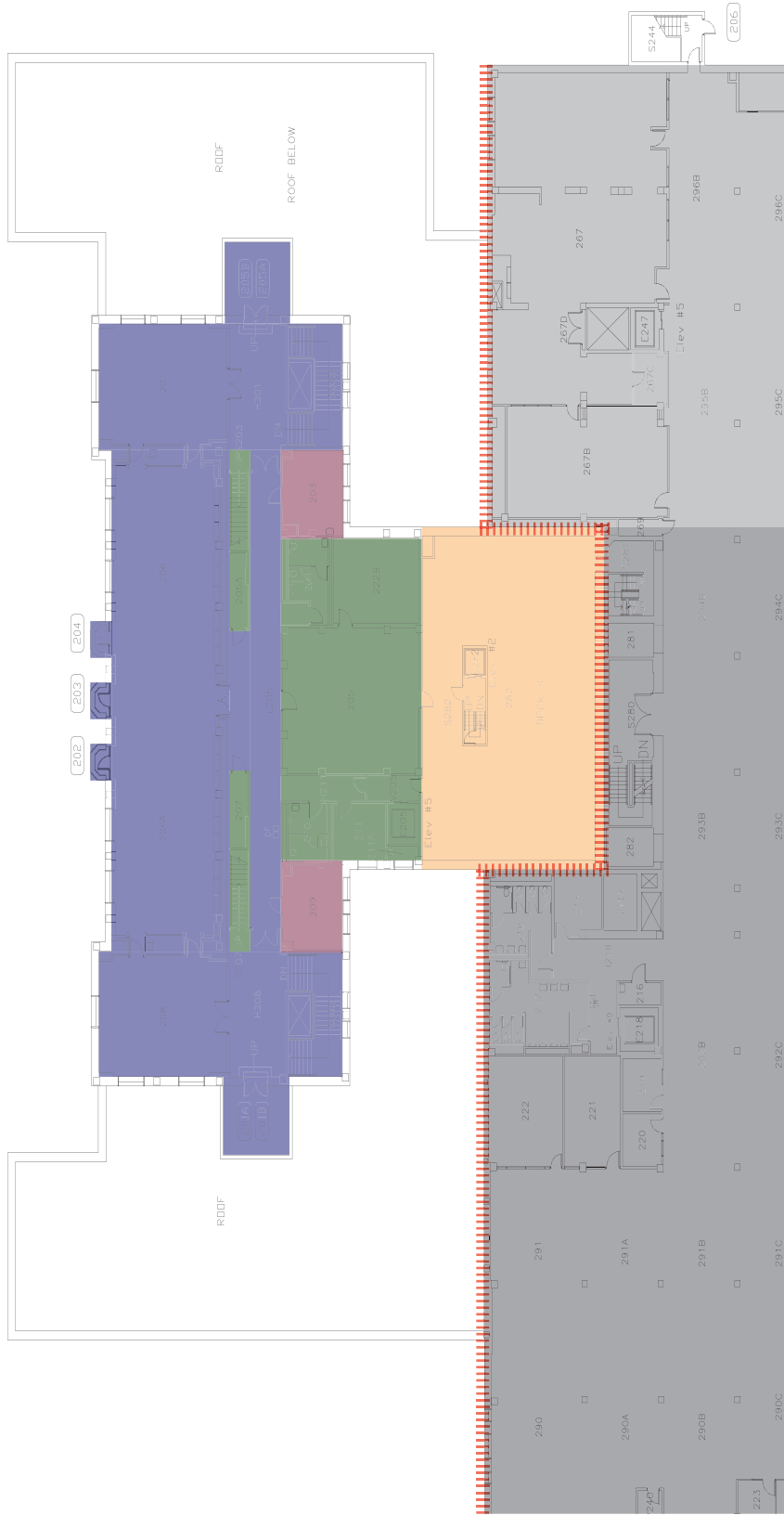
1950 Addition

1966 Addition

# Surveyed Areas & Rankings - Preliminary

## Interior

### 2019 Second Floor Plan



SECOND FLOOR PLAN

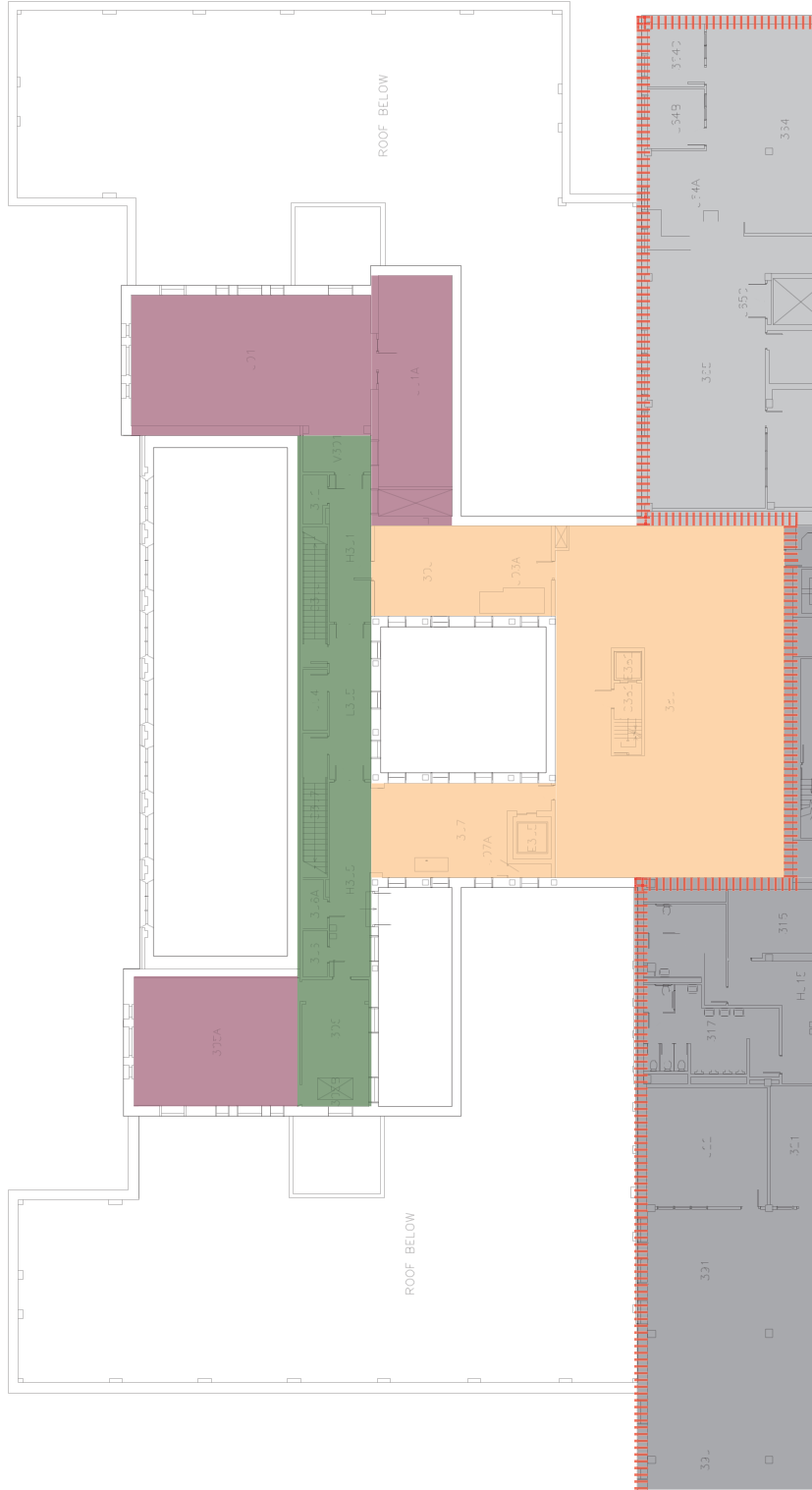
	FEET	32	64	12 OF 39	SHEET	1935	09/19	18	BUILDING
	DRAWN	REVIS	REVISED	REVISED	REVISED	REVISED	REVISED	REVISED	REVISED
UNIVERSITY OF OREGON					KNIGHT LIBRARY				
1501 Kincaid Street					1501 Kincaid Street				

Other:

1950 Addition  
Not original  
1966 Addition

# Surveyed Areas & Rankings - Preliminary

Interior  
2019 Third Floor Plan



THIRD FLOOR PLAN

	FEET	32	64	SHEET	18 OF 39	DRAWN	1935	<b>Knight Library</b> 1501 Kincaid Street	<b>UNIVERSITY OF OREGON</b>	BUILDING	18
	REVISED						03/13			Other:	1950 Addition Not original 1966 Addition
Primary Secondary Tertiary Non-contributing											

# INTERIOR FEATURES - STAIRWELL EAST (S002/S102/S202) AND WEST (S008/S108/S208) - SEE ALSO APPENDIX F

RANKING: **PRIMARY**

LEVEL OF HISTORIC SIGNIFICANCE: **HIGH**

LEVEL OF INTEGRITY: **EXCELLENT**



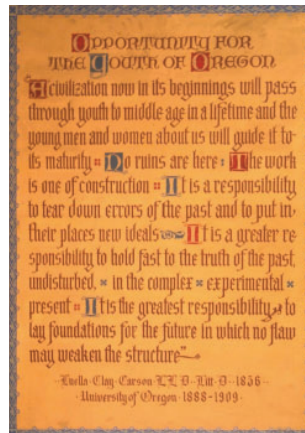
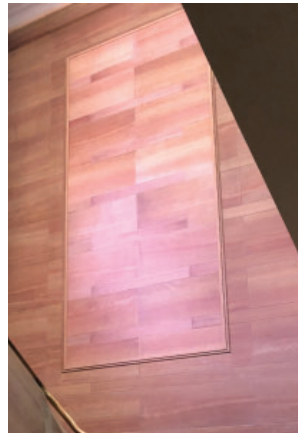
All floors stairwell, marble walls and balustrade



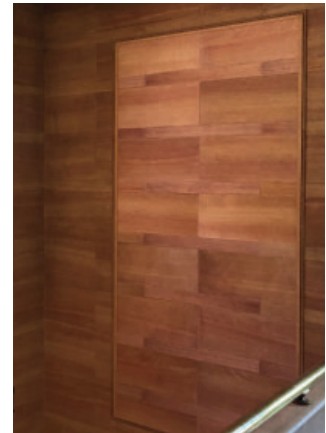
Decorative stairwell windows



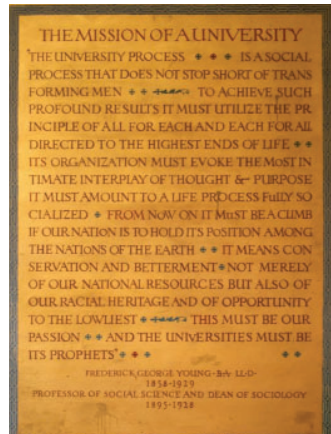
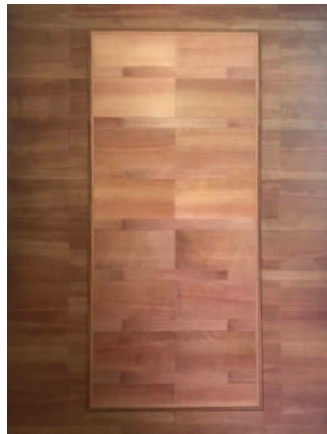
Wall Mural: "Development of the Sciences", paint on canvas (covered, 2020).



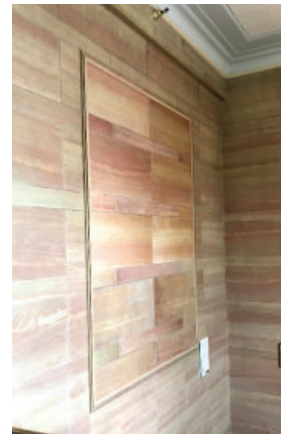
Wall Mural: "Opportunity for Growth of Oregon", paint on canvas (covered, 2020).



Wall Mural: "Development of the Arts", paint on canvas (covered, 2020).



Wall Mural: "The Mission of A University", paint on canvas (covered, 2020).



## INTERIOR - BASEMENT (FEATURES OF NOTE)

RANKING: **PRIMARY**

LEVEL OF HISTORIC SIGNIFICANCE: **HIGH**

LEVEL OF INTEGRITY: **EXCELLENT**



Basement hallway H002, wood doors, trim, and windows



Basement hallway H002, drinking fountain



Basement hallway H017, safe and hardware



Basement hallway H010, under stair wood storage doors



**INTERIOR - FIRST FLOOR (FEATURES OF NOTE) - SEE ALSO  
APPENDIX F - 2017 HISTORIC KNIGHT LIBRARY ART & ARCHITECTURE  
RANKING: PRIMARY**

LEVEL OF HISTORIC SIGNIFICANCE: **HIGH**

LEVEL OF INTEGRITY: **GOOD**



Hallway 109, Decorative interior metal gates



Entry lobbies L108 & L102, decorative gates and doors; marble walls; Art Deco wave motif which rests on a Vitruvian scroll (above door)



Lobby 105, marble walls



Entry lobbies L108 & L102, marble walls at both entries



Entry lobbies L108 & L102, entry light fixtures and gilded ceiling; Hallway 108 light fixture



Hallway 109, marble walls, and light fixtures (decorative metal gate is not original)



Wood built-ins, Room 102



First floor circulation desk, Lobby 105, not original



Entry lobbies L108 & L102, decorative interior details at both entries



First floor "phone booths", rooms 110-112 (and rooms 103-104)



(1939) Room 106, “Adelaide Church Memorial Reading Room” (Browsing Room), interior design and layout by Brownell Frasier



(2022) Room 106, “Adelaide Church Memorial Reading Room” (Browsing Room), interior design and layout (the original furnishings, light fixtures, and draperies are no longer extant or of unknown location). Much of the white pine wall paneling, Kasota stone fireplaces, wool rugs, and wood built-ins remain intact.

## INTERIOR - FIRST FLOOR (WOODEN WINDOWS, TRIM, & DOORS)

RANKING: **PRIMARY**

LEVEL OF HISTORIC SIGNIFICANCE: **HIGH**

LEVEL OF INTEGRITY: **GOOD**

EXISTING LOCATIONS:

- Room 101 & 101C
- Room 102
- Room 106
- Room 115C, D, E, F, G, H, & J



Room 115H



Room 101



Room 101



Room 101 (entry)

## INTERIOR - FIRST FLOOR (HVAC VENT COVERS & MISC.)

RANKING: **PRIMARY**

LEVEL OF HISTORIC SIGNIFICANCE: **HIGH**

LEVEL OF INTEGRITY: **GOOD**



1st floor hallway 101, metal vent cover, wood wall trim



Room 101, metal vent cover



1st floor hallway 101, original hardware



Room 115H, metal vent cover and window hardware

**INTERIOR - SECOND FLOOR (FEATURES OF NOTE) - SEE ALSO APPENDIX F - 2017 HISTORIC KNIGHT LIBRARY ART & ARCHITECTURE RANKING: PRIMARY**

LEVEL OF HISTORIC SIGNIFICANCE: **HIGH**

LEVEL OF INTEGRITY: **GOOD**



Room 208 (“Map Room”), wood built-ins and flat file cabinets



Room 208, flat file cabinet; room originally designed to house rare books and the map collection



Room 206A, Special Collections, wood built-ins



Room 206, Special Collections, wood built-ins and window trim, HVAC vent cover



(1941) Room 206, Paulson Reading Room (Special Collections)

- Designed by the Ellis Lawrence architectural firm,
- Large carved cedar panel art as focal points at the east and west walls,
- High ceilings decorated with acoustical tile,
- Light fixtures designed by Frederick A. Baker,
- Seven tall northern windows (three of the windows are doors to balconies on the exterior of the north facade),
- Plaster frieze in Art Deco style designed by Ellis F. Lawrence, with design elements suggesting mountains, trees, and crosses.



(2022) Room 206A, Paulson Reading Room (Special Collections)



Room 201, example of unique room number lettering found throughout the building



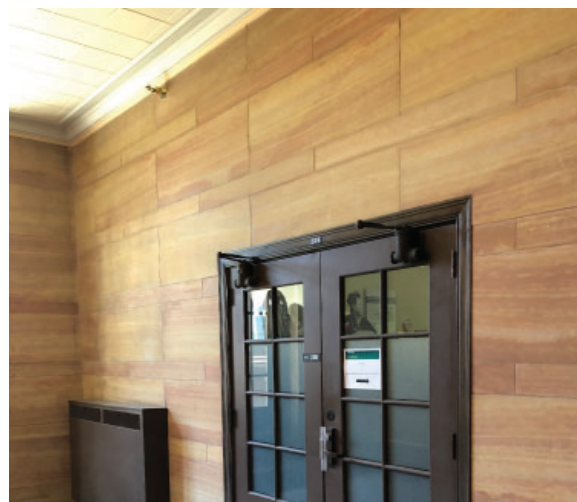
Room 201, wood built-ins



Stair S207 & S203, wood chair rail trim



Room 206, Special Collections, window balcony and door (3 total)



Hallway H208, marble walls and crown molding



# INTERIOR - SECOND FLOOR (WOODEN WINDOWS, TRIM & DOORS)

RANKING: **PRIMARY**

LEVEL OF HISTORIC SIGNIFICANCE: **HIGH**

LEVEL OF INTEGRITY: **GOOD**

EXISTING LOCATIONS:

- Hallway H2o8
- Room 203
- Hallway H2o1
- Room 209
- Room 2o1
- Room 211 & 211A
- Room 2o6 & 2o6A
- Room 2o8



Hallway H2o8



Room 2o6



Room 2o6A



Room 2o6

## INTERIOR - THIRD FLOOR (FEATURES OF NOTE)

RANKING: **PRIMARY**

LEVEL OF HISTORIC SIGNIFICANCE: **HIGH**

LEVEL OF INTEGRITY: **GOOD**



Room 301A, Philip Ranney Brooks Memorial Library doors



Room 301A, decorative door detail



Room 301A, decorative door details



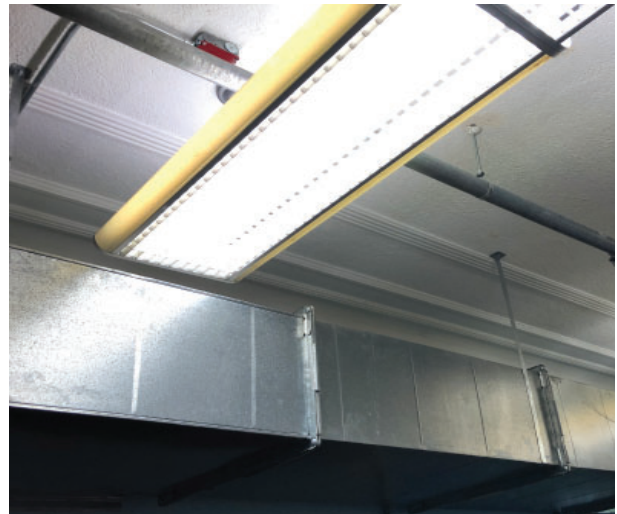
Room 301, wood built-ins



Room 301, wood built-ins



Room 301, ceiling crown molding



Room 301, ceiling trim/molding



Room 301, window fenestration



Room 301, covered windows (not original)

## INTERIOR - THIRD FLOOR (WOODEN WINDOWS, TRIM & DOORS)

### EXISTING LOCATIONS:

- 301
- 301A
- 303
- 305
- 305A
- 307
- H301
- H305
- L305



Room 301



Hallway 305 (not all doors are original)



Room 303



Room 305

# TREATMENT RECOMMENDATIONS

The following treatment recommendations are based on the Secretary of Interior's **Standards for the Treatment of Historic Properties** and their associated **Guidelines**.

The **Standards** are four distinct approaches towards the treatment of historic properties: Preservation, Rehabilitation, Restoration, and Reconstruction. "The Standards for the Treatment of Historic Properties are regulatory for all grant-in-aid projects assisted through the national Historic Preservation Fund."

The **Guidelines** "offer general design and technical recommendations to assist in applying the Standards to a specific property.... The Guidelines are advisory, not regulatory."

Together, the Standards and Guidelines "provide a framework and guidance for decision-making about work or changes to a historic property." (*NPS, The Secretary of the Interior's Standards*, <http://www.nps.gov/tps/standards.htm>)

One of the most commonly used Standards approach for the treatment of historic properties is **Rehabilitation** and is the most likely Standard to be applicable to Knight Library if it undergoes any future work. Rehabilitation is the approach that "acknowledges the need to alter or add to a historic property to meet continuing or changing uses while retaining the property's historic character" (*NPS, Four Approaches to the Treatment of Historic Properties*, <http://www.nps.gov/tps/standards/four-treatments.htm>)

The following are a summary of the Guidelines for Rehabilitation, ranked in order of procedure:

1. **Identify, Retain, and Preserve** historic materials and features
2. **Protect and Maintain** historic materials and features
3. **Repair** historic materials and features (in-kind where possible)
4. **Replace** deteriorated historic materials and features (in-kind where possible)

(*NPS, Rehabilitation: The Approach*, [http://www.nps.gov/tps/standards/four-treatments/standguide/rehab/rehab\\_approach.htm](http://www.nps.gov/tps/standards/four-treatments/standguide/rehab/rehab_approach.htm))

Like the Guidelines, the intention of these recommendations are "to assist the long-term preservation of property's significance through the preservation of historic materials and features." (*NPS, Introduction to the Standards*, <http://www.nps.gov/tps/standards/rehabilitation/rehab/stand.htm>)

## EXTERIOR

Any alterations and additions should be completed in such a way that it does not diminish the overall historic character of the building and adjacent public spaces.

## LANDSCAPES

- Identify, Retain and Preserve landscape features of Knight Library that are important in defining its overall historic character and its historic relationship between the building and the landscape.
- Protect and maintain the building and building site by providing proper drainage to assure that water does not erode foundation walls; drain toward the building; nor damage or erode the landscape. Preserve important landscape features, including ongoing maintenance of historic plant material. Provide continued protection of masonry, wood, and architectural metals which comprise the building and site features through appropriate cleaning, rust removal, limited paint removal, and re-application of protective coating systems.
- Repair features of the landscape by reinforcing historic materials before considering replacement.
- If an entire feature of the landscape is too deteriorated to repair and if the overall form and detailing are still evident, replace the feature in kind. Physical evidence from the deteriorated feature should be used as a model to guide the new work. If using the same kind of material is not technically or economically feasible, then a compatible substitute material may be considered.
- If a historic landscape feature is completely missing, design and construct a new feature. It may be based on historical, pictorial, and physical documentation; or be a new design that is compatible with the historic character of the building and site.
- When required by new use, design new exterior landscapes which is compatible with the historic character of the site and which preserves the historic relationship between the building or buildings and the landscape. Remove non-significant buildings, additions, or landscape features which detract from the historic character of the site.

## FACADES

- Identify, Retain and Preserve the features and details of the facade that are important in defining the overall historic character of the building. This includes the exterior masonry walls, their composition, and their details such as the exterior ornament, the frieze, bracket supports, and finishing coats. Pay particular attention to the primary and secondary ranked facades.
- Protect and maintain the masonry and wood details by providing proper drainage so that water does not stand on flat, horizontal surfaces or accumulate in curved decorative features. Clean these facade elements only when necessary to halt deterioration or remove heavy soiling and clean only with the gentlest method possible.
- Where there is evidence of deterioration in the mortar joints of the masonry walls and other masonry features, repair by re-pointing the mortar joints. Repair masonry features by patching, piecing-in, or consolidating the masonry using recognized preservation methods. Repair may also include the limited replacement in kind--or with compatible substitute material--of those extensively deteriorated or missing parts of masonry features when there are surviving prototypes. Where possible, preserving exterior finish in areas that are still intact.
- Areas of inappropriate brick infill and cementitious patching should be removed and patched with brick units to match the originals in size, shape, color and composition.

- Reapplying finishing coat to cover all exposed areas of brick. All areas of unstable coating should be removed, and all remaining finish coating should be cleaned. New coating should be compatible with the existing and match in color, texture, composition and permeability.

#### ENTRANCES

- Identify, Retain and Preserve the original entrances and their functional and decorative features that are important in defining the overall historic character of the building. Pay particular attention to the primary ranked entrances. This includes, but is not limited to, the north entrances, their landscaping, exterior stairs, porches, and other significant character-defining features.
- Protect and maintain the masonry, wood, and architectural metal that comprise entrances through appropriate surface treatments such as cleaning, rust removal, limited paint removal, and re-application of protective coating systems.
- Repair by reinforcing the historic materials. Repair will also generally include the limited replacement in kind--of with compatible substitute material--of those extensively deteriorated or missing parts of repeated features where there are surviving prototypes.
- All hairline cracking should be treated with an injection grout. Larger cracks and spalls along the wing wall caps should be repaired with a concrete patch. All patching of grout should match the adjacent concrete in color, texture and composition.

#### ROOF AND ROOF FEATURES

- Identify, Retain and Preserve any original roof and decorative features that are important in defining the overall historic character of the building.
- Where there is evidence of deterioration of paint, refinish with paint to match the existing adjacent finish.
- Wood elements that are rotted less than 50% should be treated with a two-part consolidant and refinished to match existing. Wood elements that are rotted more than 50% should be replaced in kind and finished to match adjacent units.

#### INTERIOR

- Much of the original interior of the north 1937 portion of the building remains intact and is in excellent condition. There are many historic elements found in decorative interior elements (art and architecture), doors, windows, and window trims, which should be taken into account when renovating the interior.

#### SPACES

- In terms of new additions or alterations, accommodate service functions such as bathrooms, mechanical equipment, and office machines as required by the building's new use in tertiary or non-contributing spaces.
- Many of the Campus Plan patterns can easily be incorporated including Flexibility and Longevity, Universal Access, Welcoming to All, Operable Windows, Quality of Light, Building Hearth, and Places to Wait.

## FEATURES AND FINISHES

- Retain and preserve interior features and finishes that are important in defining the overall historic character of the building. In general, consider interior finishes that accent interior features.
- Protect and maintain masonry, wood, and architectural metals which comprise interior features through appropriate surface treatments such as cleaning, rust removal, limited paint removal, and reapplication of protective coatings systems. Repaint with colors that are appropriate to the historic building. Abrasive cleaning should only be considered after other, gentler methods have been proven ineffective.
- Repair interior features and finishes by reinforcing the historic materials. Repair will also generally include the limited replacement in kind--or with compatible substitute material--of those extensively deteriorated or missing parts of repeated features when there are surviving prototypes.
- In terms of alterations, reuse decorative material or features that have had to be removed during the rehabilitation work including wall and baseboard trim, door molding, paneled doors, and simple wainscoting; and relocating such material or features in areas appropriate to their historic placement.

For more information, please refer to the attached Secretary of the Interior's Standards for Rehabilitation (Department of Interior regulations, 36 CFR 67) in Appendix D.



# DETAILS OF SURVEYED AREAS - EXTERIOR

## PRIMARY-RANKED LANDSCAPE AREAS



### PRIMARY-RANKED LANDSCAPE AREAS

*Era(s) of Greatest Significance in parentheses.  
Letters correspond with the Campus Plan's open-space designation map.*

- |  |   |
|--|---|
| k. 13th Avenue Axis ( <i>all eras</i> )                  | m. Memorial Quadrangle ( <i>Lawrence/Cuthbert</i> ) |
| e. University Hall Walk Axis ( <i>Inception</i> )        | f. Old Campus Quadrangle ( <i>Inception</i> )       |
| w. Gerlinger Entrance Green ( <i>Lawrence/Cuthbert</i> ) | q. Pioneer Axis ( <i>Lawrence/Cuthbert</i> )        |
| v. Knight Library Axis ( <i>Lawrence/Cuthbert</i> )      | c. Villard Hall Green ( <i>Inception</i> )          |

\* Note: The Pioneer Axis was expanded and renamed “Women’s Memorial Quadrangle” following completion of this plan. Refer to the *Campus Plan*.

# MEMORIAL QUADRANGLE

**LANDSCAPE AREA SITE MAP** — Highlighting existing elements from the period of significance (1876-1974).



LEGEND	
BIKE RACKS	
TRASH CANS	
NEWS STANDS	
SMALL SCALE FEATURES FROM PERIOD OF SIGNIFICANCE	
SMALL SCALE FEATURES AFTER PERIOD OF SIGNIFICANCE	
PLAQUES AND MEMORIALS FROM PERIOD OF SIGNIFICANCE	
PLAQUES AND MEMORIALS AFTER PERIOD OF SIGNIFICANCE	
BENCHES FROM PERIOD OF SIGNIFICANCE	
BENCHES AFTER PERIOD OF SIGNIFICANCE	
MEMORIAL BENCHES AFTER PERIOD OF SIGNIFICANCE	
TREES FROM PERIOD OF SIGNIFICANCE	
MEMORIAL TREES AFTER PERIOD OF SIGNIFICANCE	
CAMPUS TREES AFTER PERIOD OF SIGNIFICANCE	
UNIVERSITY STANDARD LIGHTPOSTS	
NON-UNIVERSITY STANDARD LIGHTPOSTS	
LANDSCAPE AREA BOUNDARY	

\* note: Period of Significance refers to the project period of 1876-1974

**SUMMARY OF EXISTING HISTORIC FEATURES**

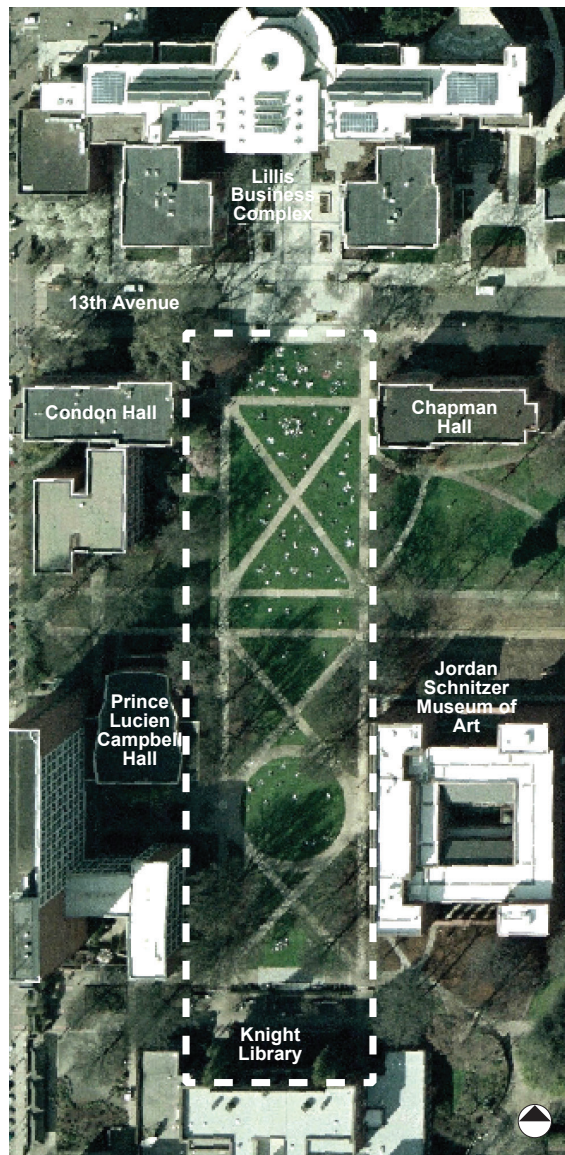
The Memorial Quadrangle was part of Ellis Lawrence’s plan for campus as early as 1914. Intended to be a key element of his grand entrance to campus, Lawrence envisioned a great axial view that initiated at the Dads’ Gates at 11th Avenue and eventually terminated at the head of the Memorial Quadrangle. The quadrangle was to be the university’s more formally-designed campus open space, and Lawrence initially proposed to build a great civic auditorium as its focal point, later to be replaced by the Library. The Quad gets its name from three distinct memorials. The first is a plaque dedicated in 1921 to the athletes who represented the University of Oregon on Kincaid Field. The second consists of the distinctive walks of the Quadrangle that honor the students who fought in the Spanish-American and First World Wars. The third consists of eight Pyramidal English oaks planted in 1940 to honor the senior class president of 1939, Robert Chase Bailey, who drowned in the Mill Race during his senior year. A brass plaque is located on the Library’s terrace fountain as part of this memorial.



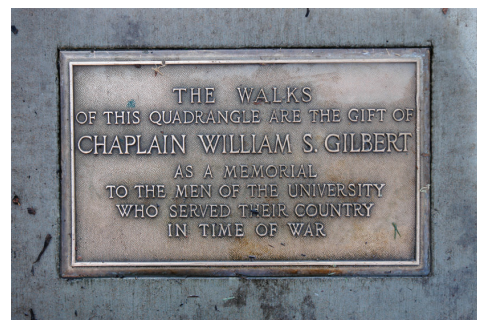
*A diagonal view toward Prince Lucien Campbell Hall.*



*Knight Library, at the head of the Memorial Quadrangle.*



*2004 aerial of the Memorial Quadrangle*



*A plaque noting the gift of the Memorial Quadrangle.*

**RANKING: PRIMARY**

**LEVEL OF HISTORIC SIGNIFICANCE: HIGH**

**LEVEL OF INTEGRITY: EXCELLENT**

ORIGINAL USE: Open space

EXISTING USE: Open space

EXISTING EXTERIOR FEATURES OF NOTE:

- historic Oak trees
- formal pathway layout
- memorial plaque
- relationship with surrounding buildings

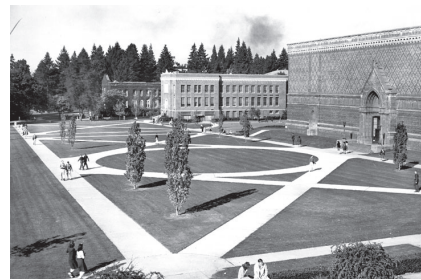
*View looking south towards Knight Library.*



*The Memorial Quad circa 1946, as viewed from what was probably the second story of the library.*



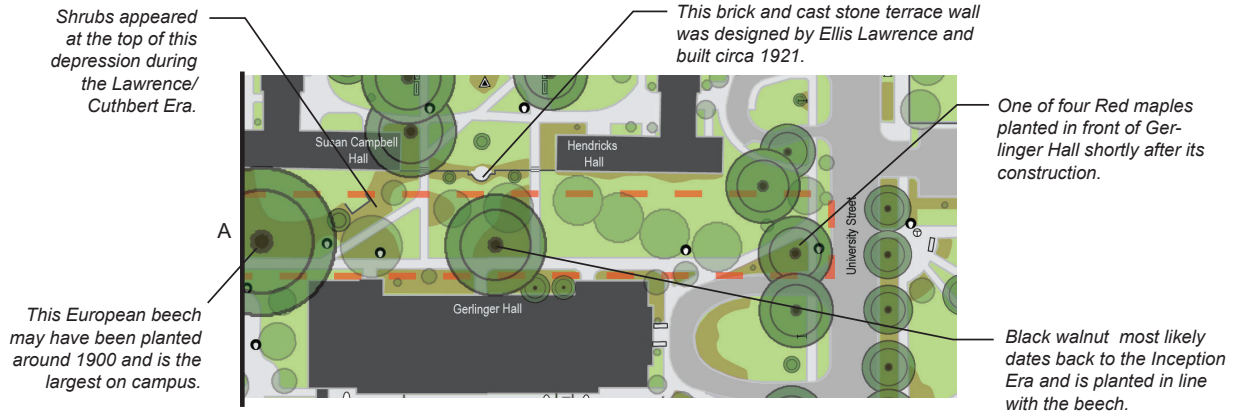
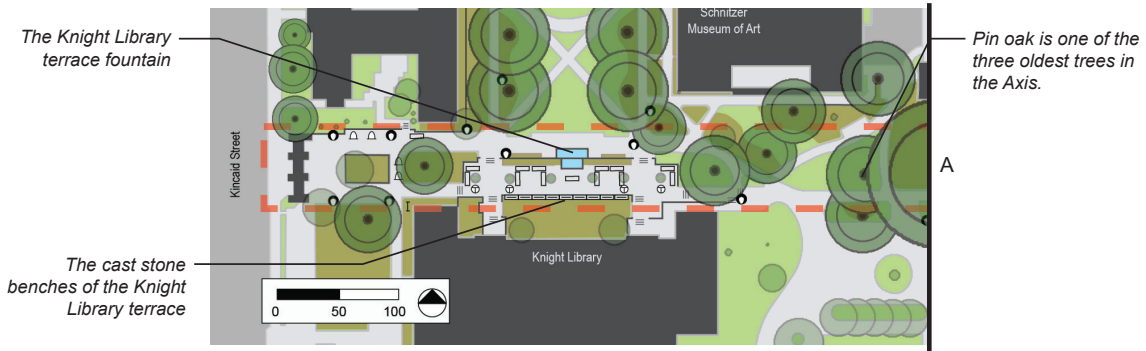
*1950 aerial*



*View of the Memorial Quad with the Museum on the right.*

# KNIGHT LIBRARY AXIS

**LANDSCAPE AREA SITE MAP** — Highlighting existing elements from the period of significance (1876-1974).



LEGEND			
TRASH CANS	⊕	BIKE RACKS	⌒
NEWS STANDS	Ⓝ	TREES FROM PERIOD OF SIGNIFICANCE	●
SMALL SCALE FEATURES FROM PERIOD OF SIGNIFICANCE	▲	MEMORIAL TREES AFTER PERIOD OF SIGNIFICANCE	●
SMALL SCALE FEATURES AFTER PERIOD OF SIGNIFICANCE	△	CAMPUS TREES AFTER PERIOD OF SIGNIFICANCE	●
PLAQUES AND MEMORIALS FROM PERIOD OF SIGNIFICANCE	●	UNIVERSITY STANDARD LIGHTPOSTS	⦿
PLAQUES AND MEMORIALS AFTER PERIOD OF SIGNIFICANCE	○	NON-UNIVERSITY STANDARD LIGHTPOSTS	⦿
BENCHES FROM PERIOD OF SIGNIFICANCE	▬	LANDSCAPE AREA BOUNDARY	⋯
BENCHES AFTER PERIOD OF SIGNIFICANCE	▬		
MEMORIAL BENCHES AFTER PERIOD OF SIGNIFICANCE	▬		

\* note: Period of Significance refers to the project period of 1876-1974

**RANKING: PRIMARY**

**LEVEL OF HISTORIC SIGNIFICANCE: HIGH**

**LEVEL OF INTEGRITY: EXCELLENT**

ORIGINAL USE: Open space

EXISTING USE: Open space

EXISTING EXTERIOR FEATURES OF NOTE:

- cast stone benches
- terrace fountain
- stone and brick landscape walls
- historic Walnut, Beech, Pin Oak, and Red Maple trees



*A view west with Gerlinger Hall to the left and Susan Campbell Hall to the right.*



*A northwest view through the trees with the Schnitzer Museum of Art at left.*



*1950 aerial, showing how the Axis connected to Kincaid Street during this period.*



*The fountain at the entrance of Knight Library.*

*Image looking east, circa 1940, with Susan Campbell Hall at left. The shrubs appear to be forsythia.*



*Image looking northwest toward Susan Campbell Hall, circa 1921.*



# APPENDIX A - HISTORIC RANKING METHODOLOGY

excerpt from pp. 44-46 of the *Campus Heritage Landscape Plan: 1.0 Landscape Preservation Guidelines and Description of Historic Resources*

## Significance:

*“the meaning or value ascribed to a structure, landscape, object, or site based on the National Register criteria for evaluation...”*

## Integrity:

*“the authenticity of a property’s historic identity, evinced by the survival of physical characteristics that existed during the property’s historic or prehistoric period...”*

Source: National Park Service, Guidelines for the Treatment of Cultural Landscapes, p. 5

Integrity criteria evaluated for each of the twenty-one landscape areas surveyed:

- Location/Setting** – Are important elements still in their original location and configuration?
- Design** – How has the general structure of the landscape changed since its period of significance?
- Materials** – Are original materials/vegetation that were used to structure and shape the landscape still present?
- Workmanship** – Does the landscape retain characteristic workmanship from the period of significance?
- Feeling** – Does the landscape evoke the period of significance?
- Association** – Is it possible to associate elements of the landscape with significant people or events?

## SIGNIFICANCE

The actual evaluation of significance was based upon the process developed for listing in the National Register of Historic Places, in which a resource must demonstrate significance based upon one or more of the following criteria:

- A. Association with significant events that have made a significant contribution to the broad patterns of campus or community history.
- B. Association with significant persons.
- C. Distinctive architecturally because it
  - embodies distinctive characteristics of a type, period, or method of construction;
  - represents the work of a master;
  - possesses high artistic value; or
  - represents a significant and distinguishable entity whose components may lack individual distinction.

(Note: Criterion D, which addresses archeological significance, was not applicable to any campus resources.)

Four levels of significance were designated and used to rank each historic resource. The levels and their criteria were:

- high significance – considerable contribution to the history of the campus and its growth.
- medium significance – noteworthy contribution the history of the campus and its growth.
- low significance – discernible contribution to the history of the campus and its growth.
- very low significance/no significance – no discernible importance to the history of the campus and its growth.

There is always room for debate about a resource’s level of significance, as this determination is not a strictly objective exercise. Though the rationale for determining a specific level might never be entirely irrefutable, it should be defensible. It also needs to be recognized that a resource’s significance might change as important connections to the campus character are eventually realized or discovered.

## INTEGRITY

Integrity is the degree to which the key elements that comprise a resource’s significance are still evident today.

Evaluation of integrity is based upon the National Register process-- defining the essential physical features that represent it’s significance and determining whether they are still present and intact enough to convey their significance. For example, if a building is deemed significant because of its exterior detailing and materials (criterion C), one would evaluate whether those items have remained relatively unaltered. If this is the case, the resource has excellent integrity.

Criteria were developed and used in the survey process to help determine each landscape area’s level of integrity (described at left).

Integrity is ascertained based on the specific era (or eras) of significance for that particular landscape area. Four levels of integrity were established and applied to each landscape area:

- excellent integrity – retains a very high percentage of original fabric, and the original design intent is apparent.
- good integrity – retains a significant percentage of original fabric, with a discernible design intent.
- fair integrity – original fabric is present, but diminished.
- poor integrity – contains little historic fabric, and the original design intent is difficult to discern.

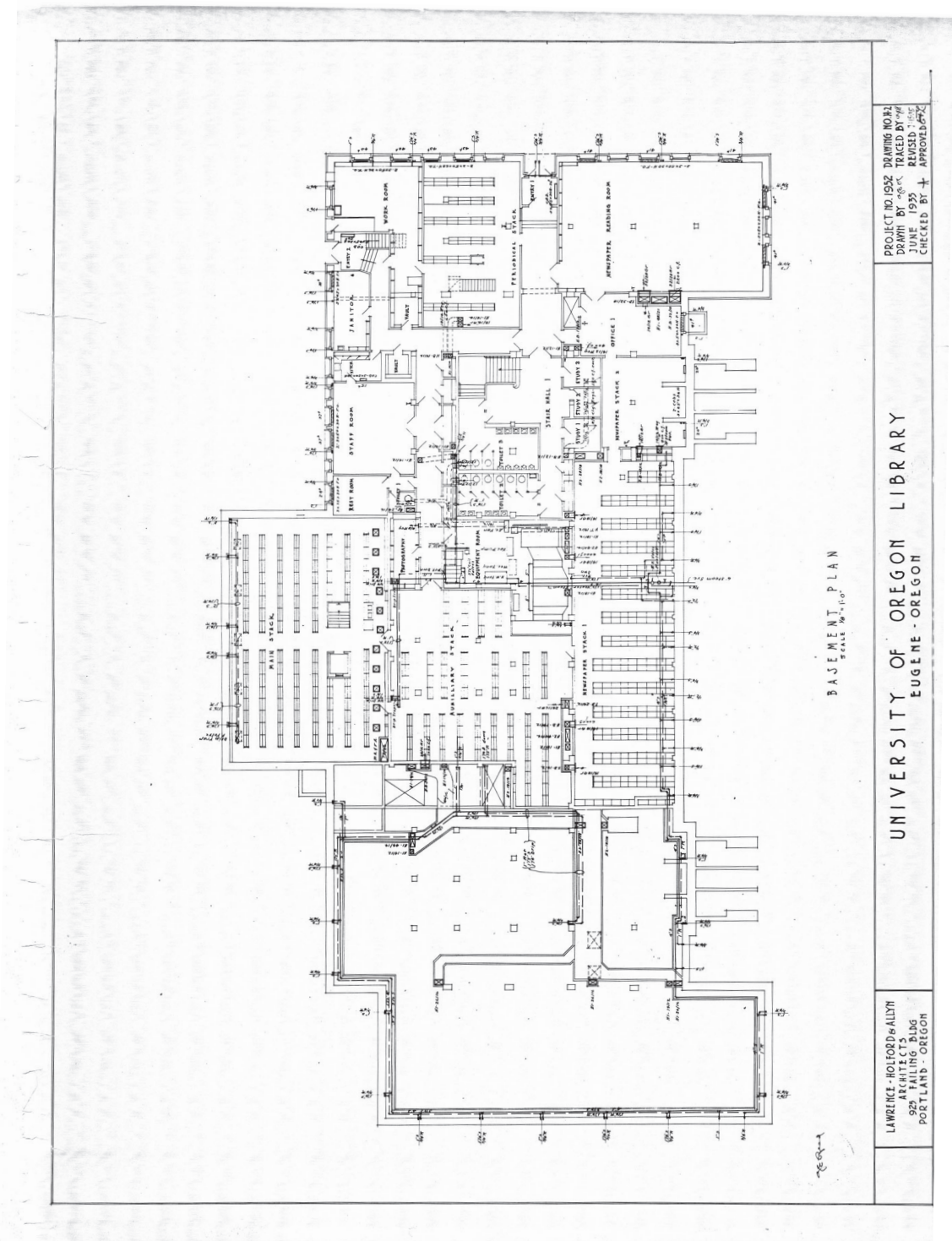
### RANKING LEVELS

Historic rankings were determined by evaluating two factors: the resource’s historic significance and its integrity. Using a matrix (below), an historic ranking for each resource was determined based on one of four ranking levels: primary, secondary, tertiary, and non-contributing.

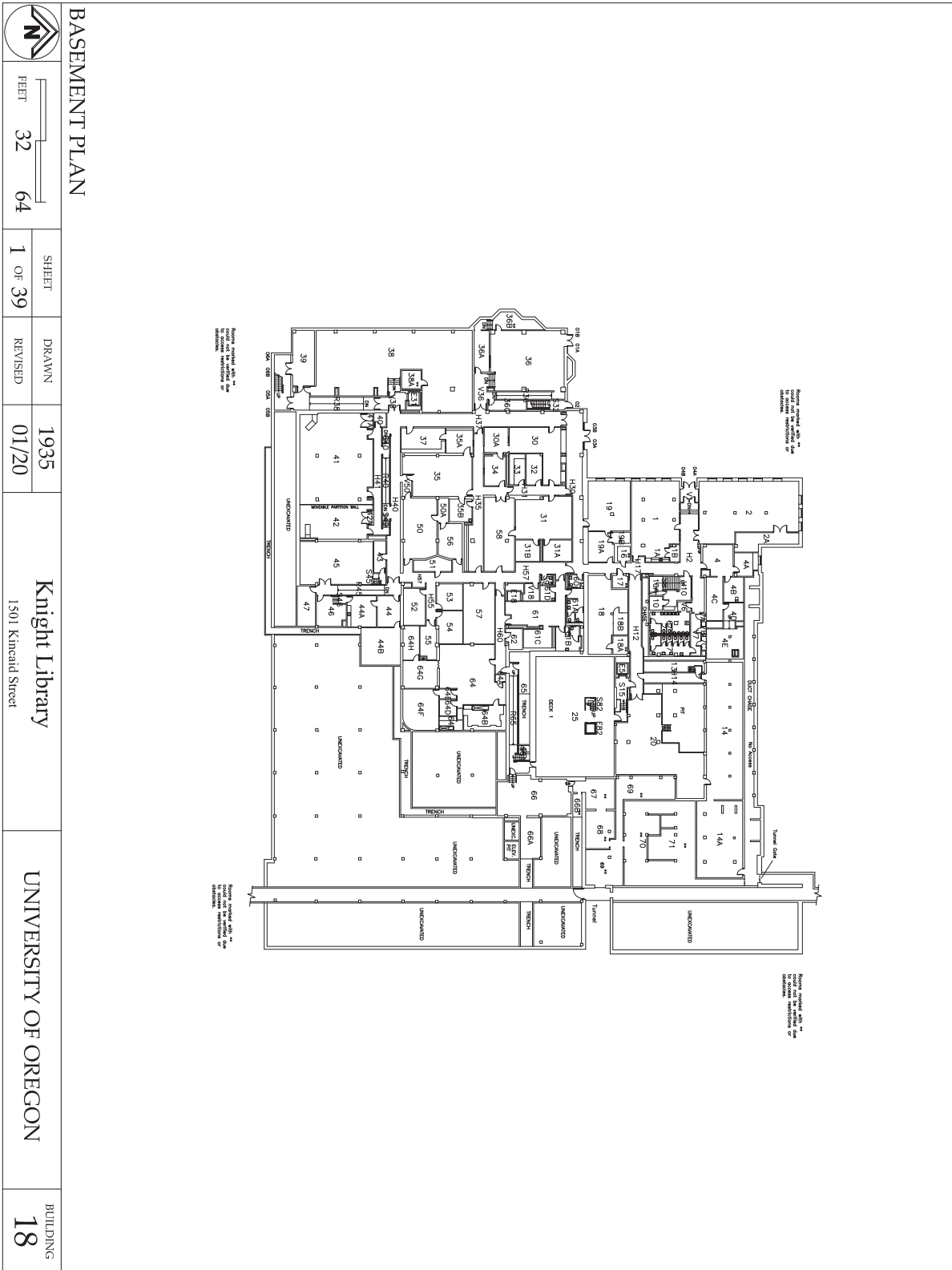
<input checked="" type="checkbox"/> Primary Ranking Resources that have a high level of historic significance and excellent or good integrity (likely to be eligible for listing in the National Register).				
<input type="checkbox"/> Secondary Ranking Resources that have a reduced level of significance and good or excellent integrity. Also, resources that have a high level of historic significance but fair integrity (possibly eligible for listing in the National Register).				
<input type="checkbox"/> Tertiary Ranking Resources that have a reduced (medium) level of historic significance but compromised (fair) integrity. Also, resources that have integrity but lack noteworthy significance at this time as an individual resource. These resources could contribute to the historic significance of a large grouping or district, though they are likely not eligible for listing individually in the National Register.				
<input type="checkbox"/> Non-Contributing Ranking Resources that lack noteworthy significance or have severely compromised integrity. They do not contribute to the historic significance of a large grouping or district and are not eligible for listing in the National Register.				
	high historic significance	medium historic significance	low historic significance	very low or no historic sig.
excellent integrity	primary ranking	secondary ranking	tertiary ranking	non-contributing
good integrity	primary ranking	secondary ranking	tertiary ranking	non-contributing
fair integrity	secondary ranking	tertiary ranking	tertiary ranking	non-contributing
poor integrity	non-contributing	non-contributing	non-contributing	non-contributing
Matrix used to determine the historic ranking levels for the landscape areas and buildings under study.				



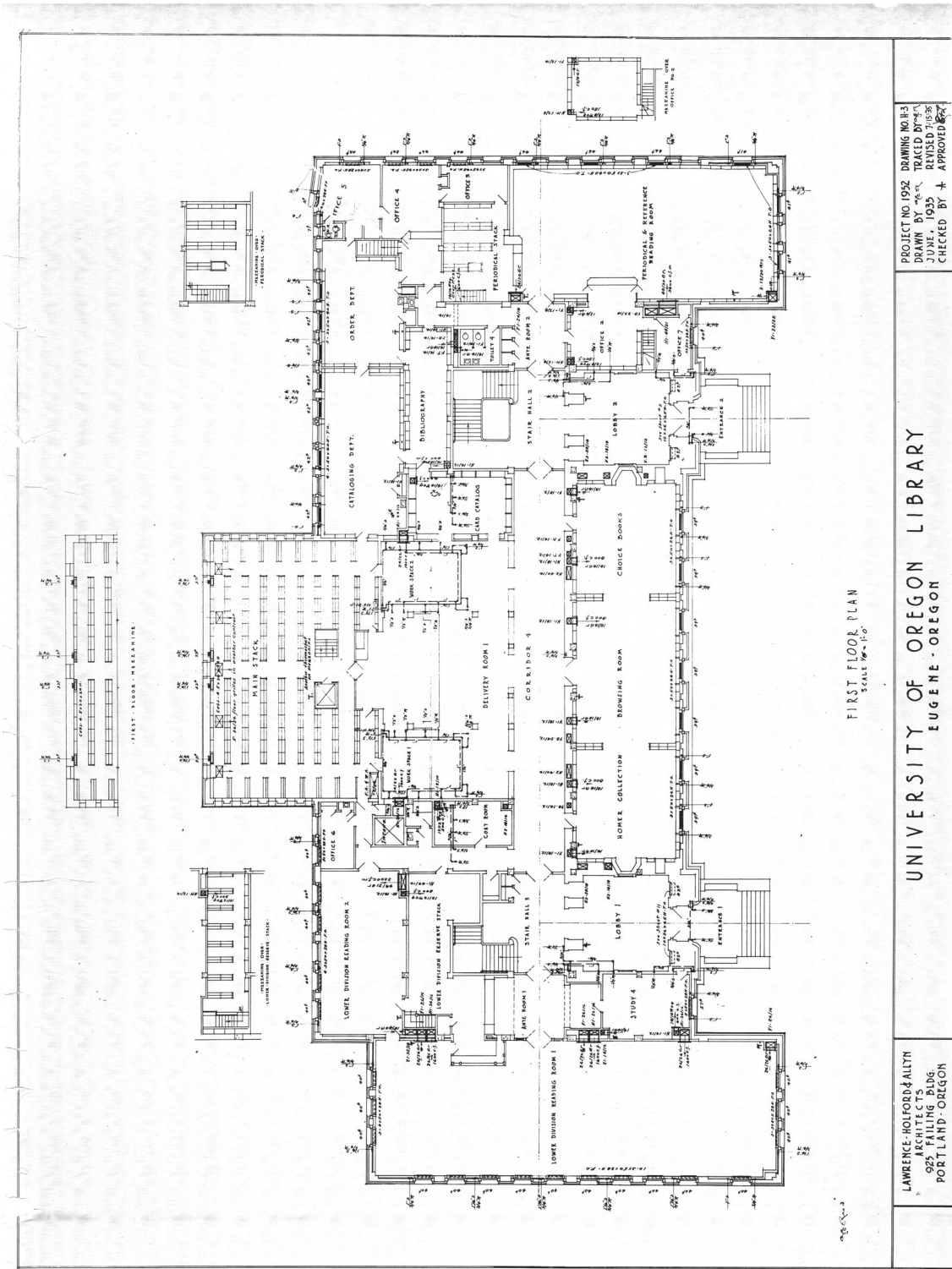
# APPENDIX B - 1935 / 2019 FLOOR PLANS



BASEMENT PLAN (1935)



BASEMENT PLAN (2019)



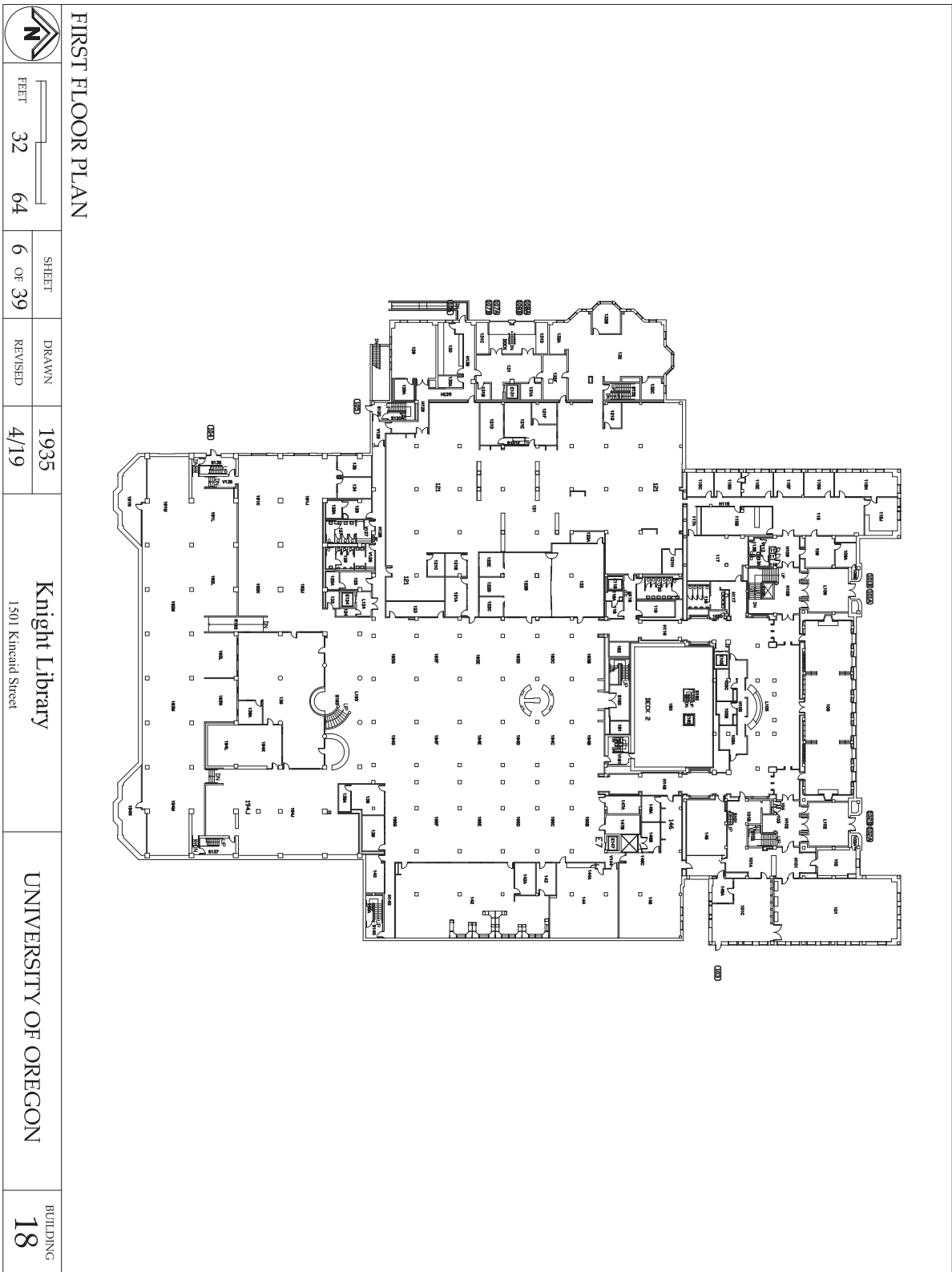
FIRST FLOOR PLAN  
SCALE 1/8" = 1'-0"

UNIVERSITY OF OREGON LIBRARY  
EUGENE - OREGON

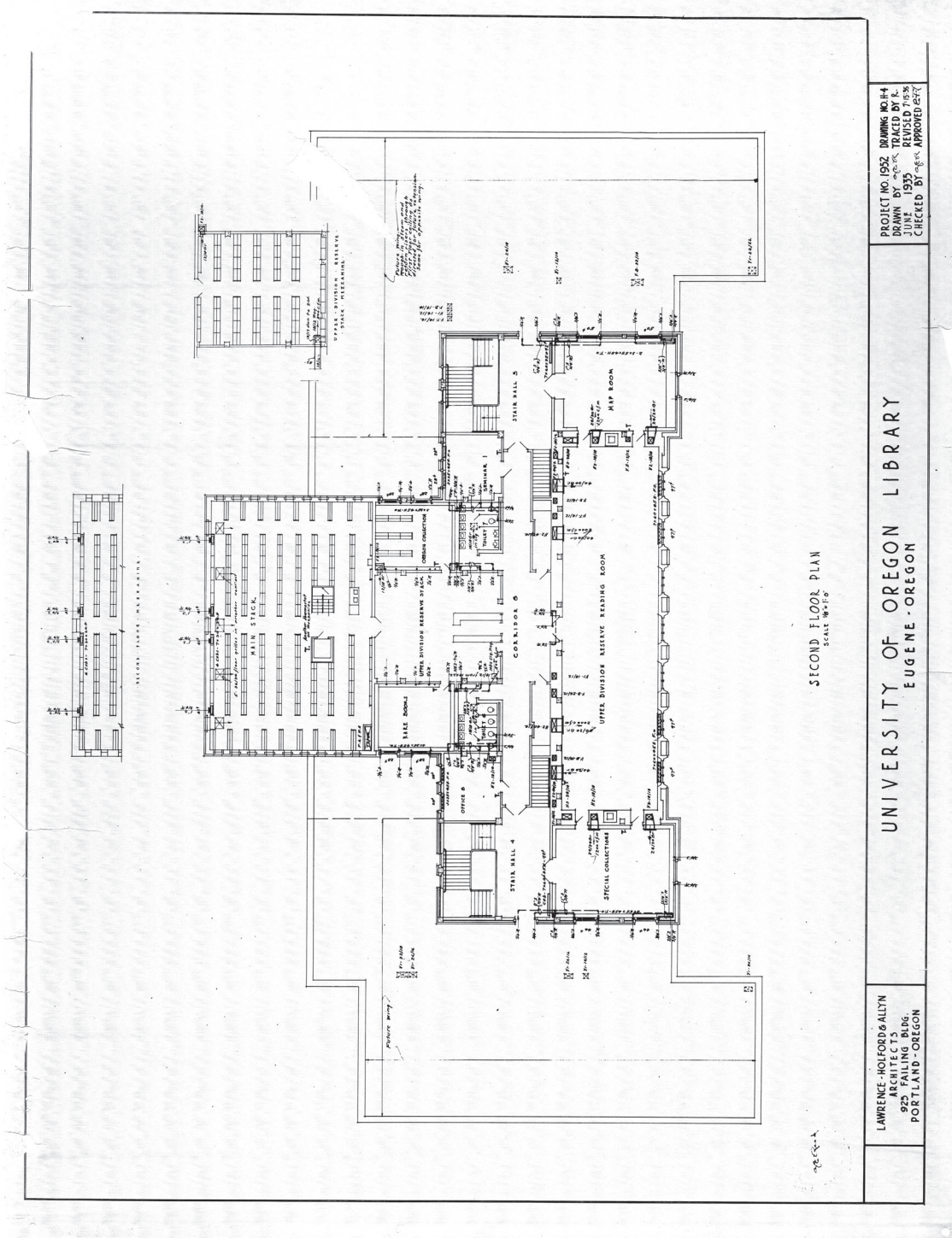
LAWRENCE - HOLFORD & ALTYN  
ARCHITECTS  
925 MARKET STREET  
PORTLAND - OREGON

PROJECT NO. 1952 DRAWING NO. 313  
DRAWN BY [initials] REVISIONS BY [initials]  
CHECKED BY [initials] APPROVED BY [initials]

FIRST FLOOR PLAN (1935)



FIRST FLOOR PLAN (2019)

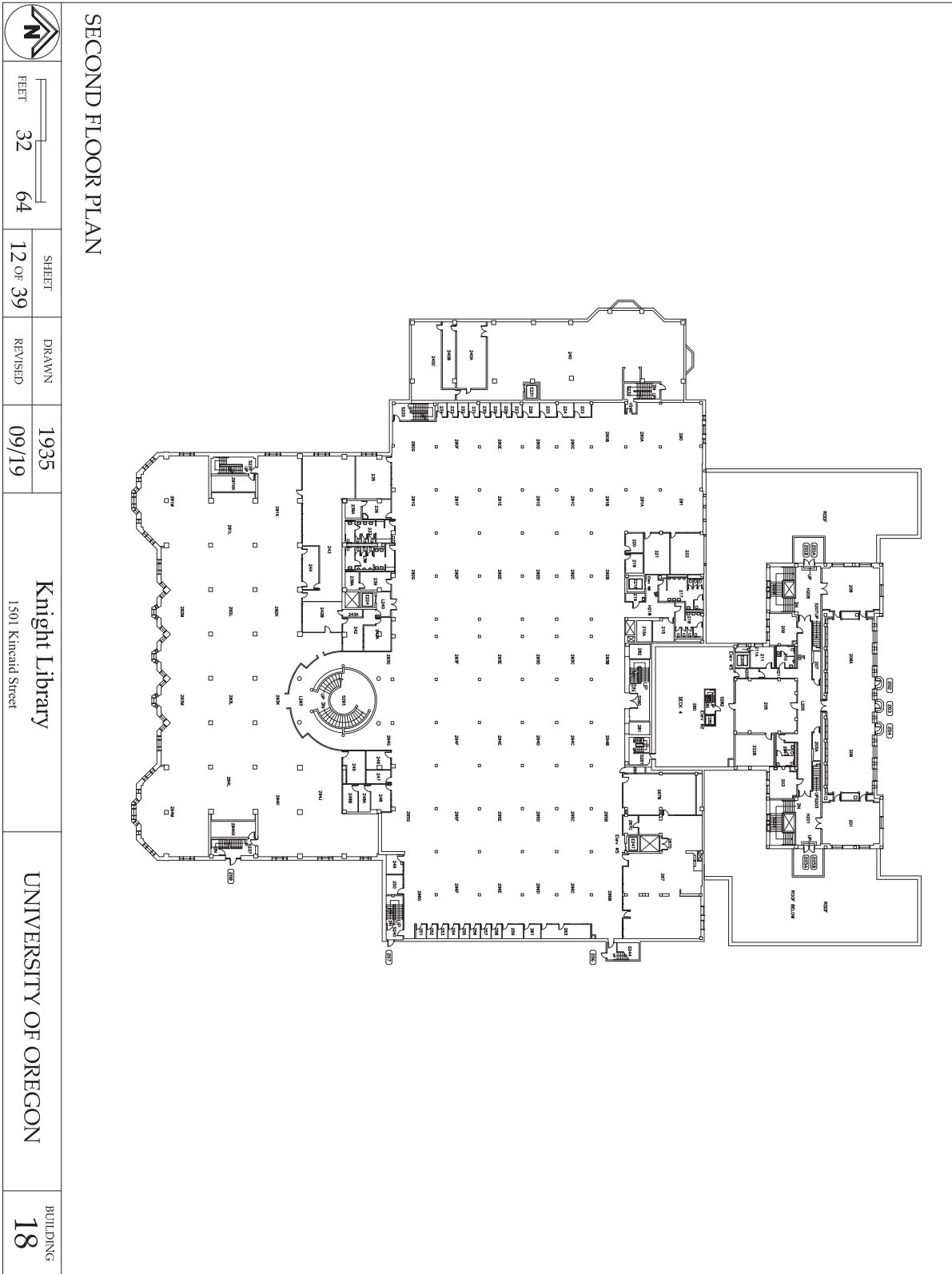


PROJECT NO. 1932. DRAWING NO. H-4  
 DRAWN BY M. G. C. TRACED BY R.  
 JUNE 1935. REVISED 7-1935.  
 CHECKED BY M. G. C. APPROVED G. W.

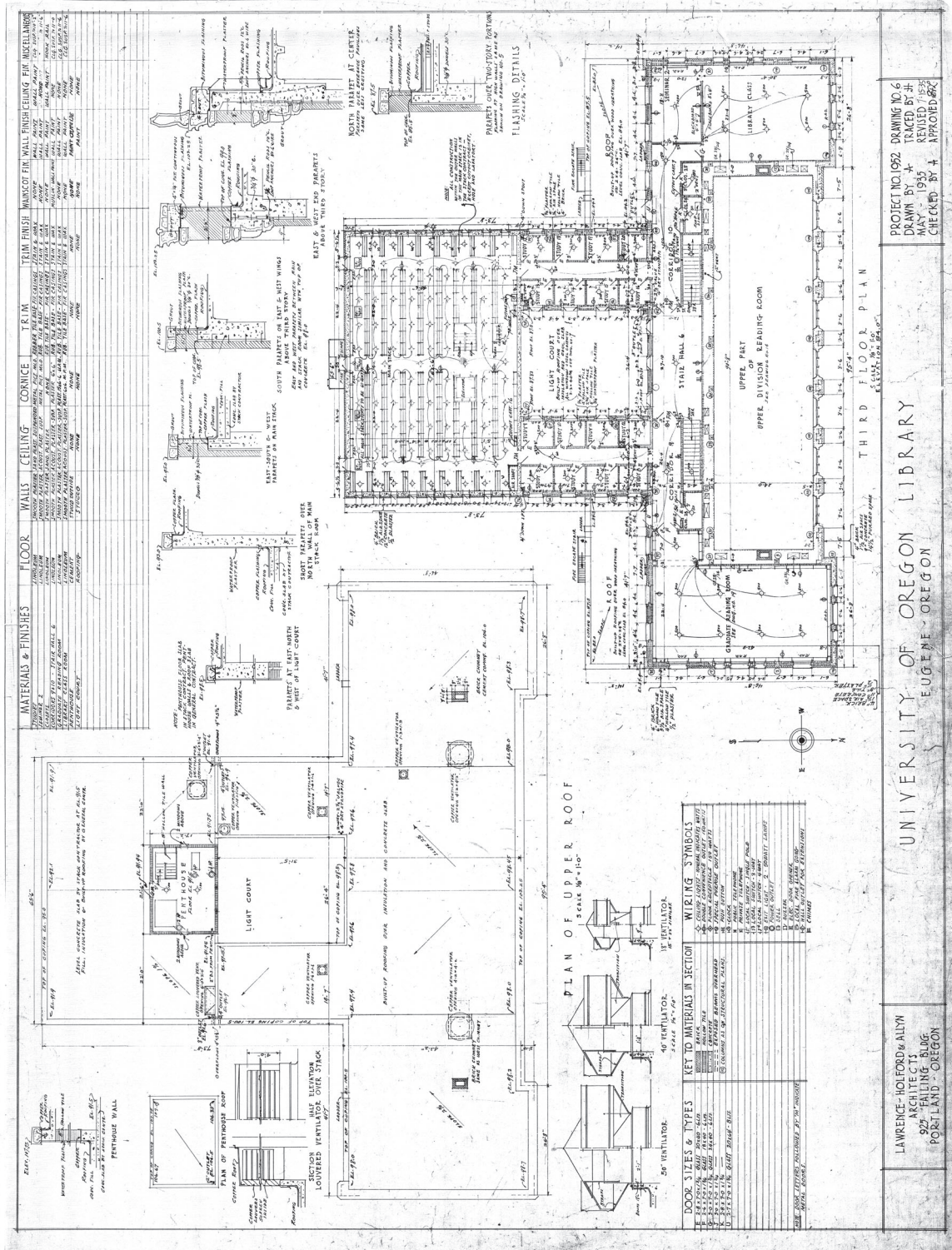
UNIVERSITY OF OREGON LIBRARY  
 EUGENE - OREGON

LAWRENCE - HOLFORD & ALLYN  
 ARCHITECTS  
 925 FALLING BLDG.  
 PORTLAND - OREGON

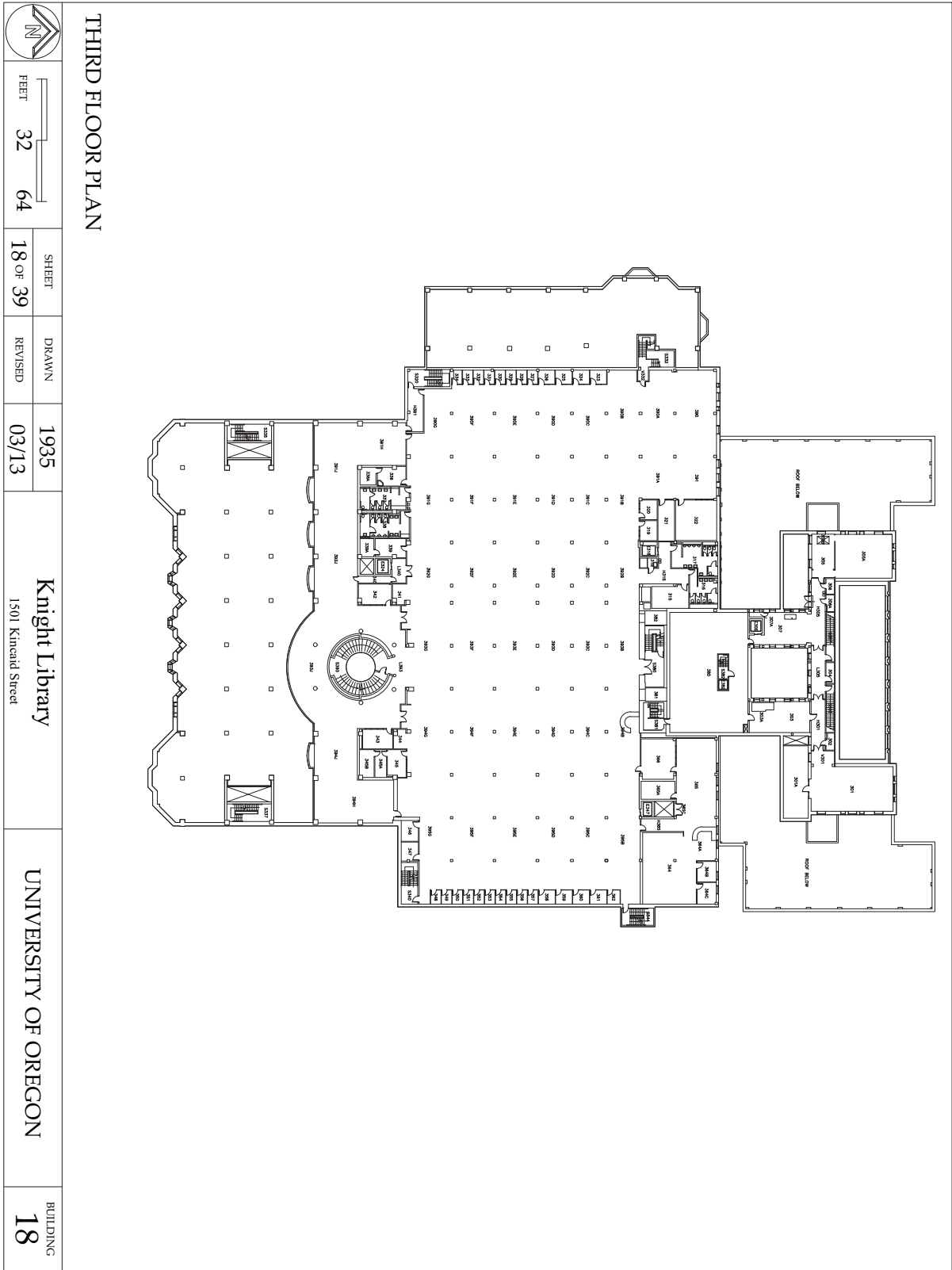
SECOND FLOOR PLAN (1935)



SECOND FLOOR PLAN (2019)

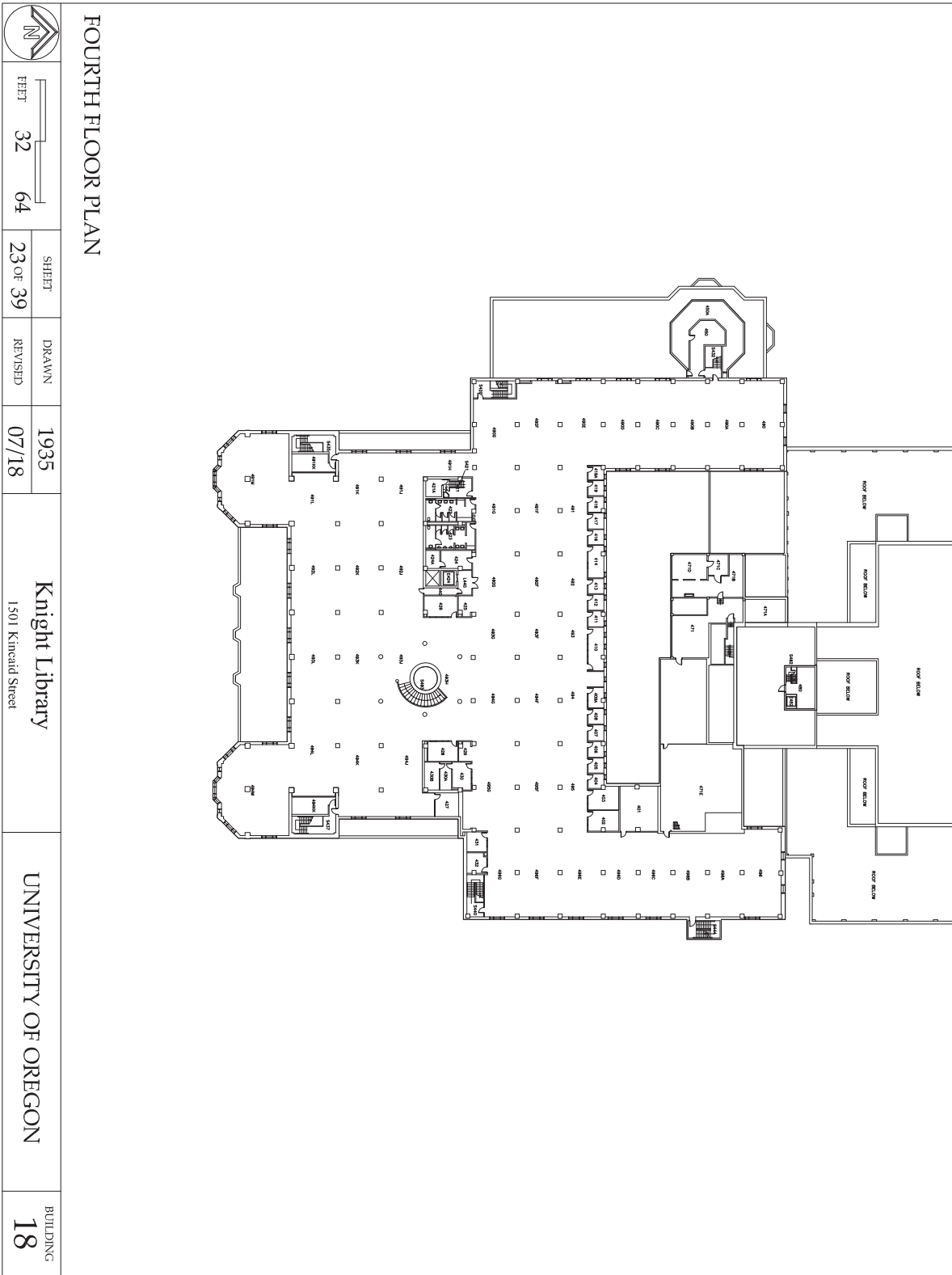


THIRD FLOOR & UPPER ROOF PLAN (1935)

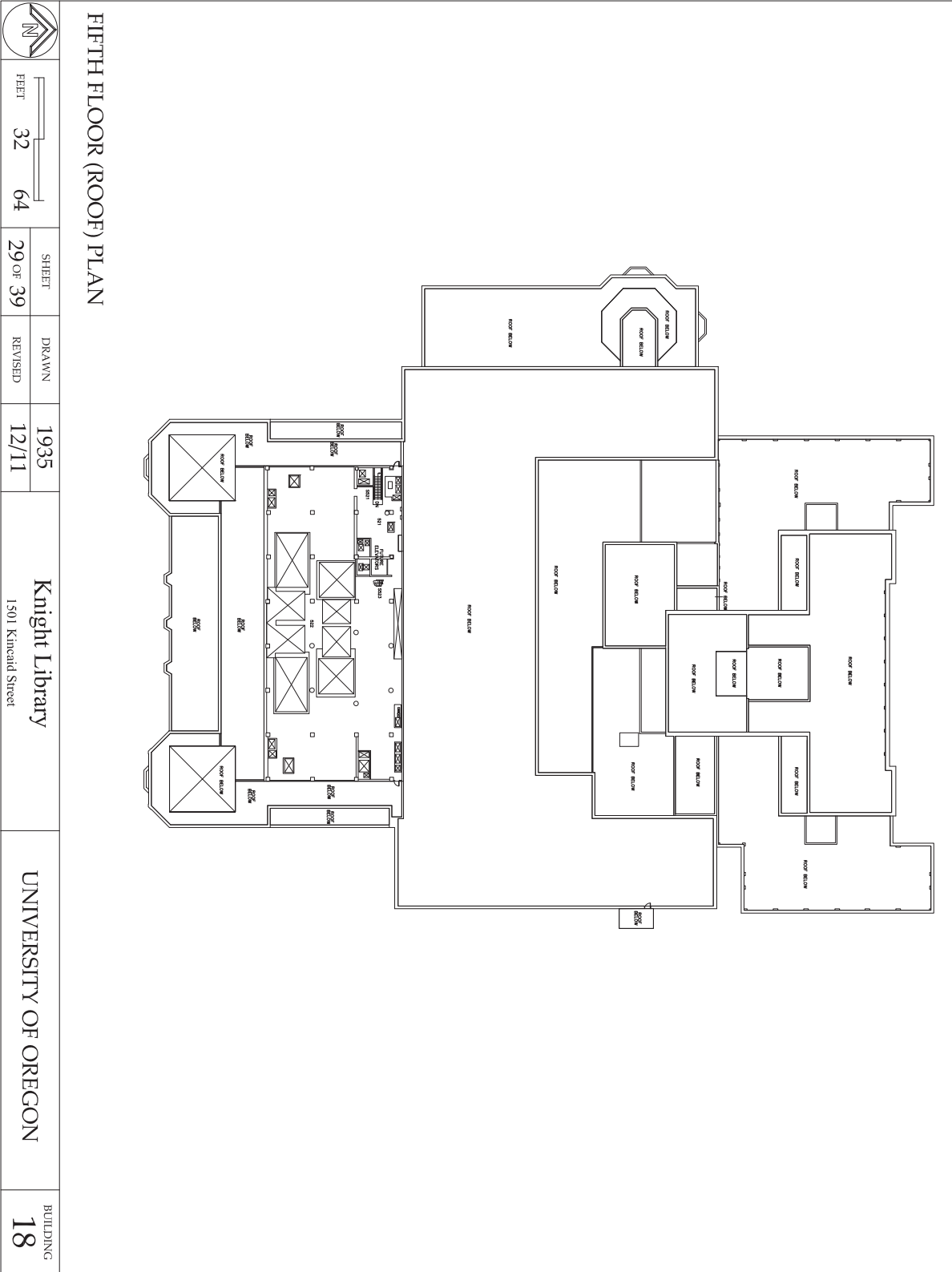


THIRD FLOOR PLAN (2019)





FOURTH FLOOR PLAN (2019)



ROOF PLAN (2019)

# APPENDIX C - 4.0 SURVEY OF BUILDINGS, KNIGHT LIBRARY

**HISTORIC RESOURCE SURVEY FORM**  
University of Oregon Cultural Resources Survey  
Eugene, Lane County, Oregon  
Summer 2006

## RESOURCE IDENTIFICATION

Current building name: Knight Library  
Historic building name: The Library  
Building address: 1501 Kincaid Street  
Ranking: Primary

## ARCHITECTURAL DESCRIPTION

Architectural style classification: Beaux Arts Eclecticism (original portion) and Modernistic (per National Register nomination)  
Building plan (footprint shape): rectangular (long front) and rear and side wings  
Number of stories: 3  
Foundation material(s): concrete w/masonry facing (original)  
Primary exterior wall material: American bond brick  
Secondary exterior wall material: cast stone (original)  
Roof configuration/type: flat (original)  
Primary roof material: BUR (original)  
Primary window type: 15x15 multi-pane double-hung; 2<sup>nd</sup> story reading room windows w/spec. ornamental pattern (original)  
Primary window material: wood and glass (original)  
Decorative features and materials: cast stone belt courses, lettering & bas relief panels & balconies, entryway & reading room window jambs & heads, parapet coping & cornice w/heads, benches, brick 1<sup>st</sup> floor rowlock header courses; decorative metal entry lamps & doors; marble, travertine, & kasota stone in lobbies, stairs, hall, circulation (original)  
Landscape features: formal north plaza with benches, pool, regularly spaced small trees, & stone entry stairs; small shrubs & trees adjacent to building; east garden  
Associated resources: other Lawrence buildings on Memorial Quad, Memorial Quad, Knight Library Axis, Kincaid Green, Southwest Campus Green  
Comments: Knight Library is the terminus for Memorial Quad and Knight Library Axis. Artwork in building was done by: O.B. Dawson (wrought iron); Noland Zane (text panels); Arthur & Albert Runquist (murals); Art Clough w/Bates, McClure (carved wood); and Louis Shubart (cast stone).

## ARCHITECTURAL HISTORY

Date of construction: 1937  
Architect: Lawrence, Holford & Allyn (original)  
Builder/Contractor: Ross B. Hammond Inc. (General); Ernest Thomas (cast stone); Urban & Sinnott Inc. (Heating); English-Baker Co. (lighting fixtures); Lutz Marble Co. (interior stone); Art Metal Construction Co. (bookstacks); Hoffmeyer & Collins (masonry), (original).  
Moved? (yes/no): no      Date of move(s): N/A  
Description/dates of major additions/alterations: See Continuation Sheet 1.

**HISTORICAL ASSOCIATIONS & SIGNIFICANCE**

Original use(s) or function(s): University Library

Current use(s) or function(s): University Library

Area(s) of significance: Education, Architecture, Art

Period of significance: 1935 - 1937

Statement of Significance (use continuation sheet if necessary):

Ellis Fuller Lawrence's original plan called for an auditorium to be built in this site, as the termination of the south axis and most important building in his beaux-arts plan. The axis extended from the auditorium to Dad's Gates and beyond to the train station. However, the decision was made by President Hall to build a library in its place. The library was funded by the Public Works Administration ("PWA") and the Works Progress Administration ("WPA") program funds and is representative of the last surge of building before WWII. The library has been referred to as Oregon's best example of integrated art and architecture. It is the most fully executed of Lawrence's buildings incorporating sculpture, painting and metalwork, much done by students, graduates and professors. Much of the interior artwork is mostly intact. The building's name was changed in 1994 to honor Phillip Knight, President and CEO of Nike, Inc and a University of Oregon alum.

Knight Library, along with the Memorial Quad, was listed on the National Register of Historic Places on March 9, 1990. The original Lawrence building from 1937 was nominated and listed and the 1950 and 1966 additions were listed as non-contributing. At the time the National Park Service accepted the building, the 1994 addition had yet to be built. The library was listed under criteria A and C: it was listed under A because it was funded by Public Works Administration funds and listed under C as a significant element in Lawrence's Beaux Arts plan and for the fine craftsmanship displayed on the exterior and interior of the library. The original portion of the building is listed in the nomination as Beaux Arts Eclecticism while the additions are Modernistic. Some elements of the original design reflect a "moderne" character including the decorative motifs, and functional elements such as entrance lanterns.

Although Knight Library has had three major additions (1950, 1966 and 1994), they were all built to the south (rear) façade, leaving the north (front) façade and Memorial Quad intact. For this reason, the significance of the building has not been diminished by the later additions. Since it is listed on the National Register, it is considered a primary ranked building.

For further information, please refer to the National Register Nomination form for this building.

**NATIONAL REGISTER ELIGIBILITY ASSESSMENT**Historic Significance (check one):  High  Medium  Low  Very Low or NoneIntegrity (check one):  Excellent  Good  Fair  PoorCondition (check one):  Excellent  Good  Fair  PoorBuilding designation:  City Landmark  National Register  National Historic Landmark  Not listedPreliminary National Register eligibility findingsBuilding is potentially eligible:  Individually or  As a contributing resource in a district only

If eligible individually, applicable criteria (check all that apply):

 A. Associated with significant events C. Distinctive architecturally B. Associated with significant persons D. Archaeologically importantIf applicable, building qualifies under NR Criterion Considerations:  Yes  No If yes, which apply: N/ABuilding is NOT eligible:  Intact but lacks distinction or  Altered/loss of integrity or  Not 50 years old

**DOCUMENTATION**

Indicate resources consulted when researching this building (check all that apply):

- |   |   |  |
|---|---|--|
| <input checked="" type="checkbox"/> University archives | <input type="checkbox"/> UO Planning Office files | <input checked="" type="checkbox"/> Newspapers             |
| <input type="checkbox"/> Sanborn maps                   | <input type="checkbox"/> Building permits         | <input checked="" type="checkbox"/> SHPO files             |
| <input type="checkbox"/> State Archives                 | <input type="checkbox"/> State Library            | <input type="checkbox"/> State Historic Society            |
| <input type="checkbox"/> Local Historic Society         | <input type="checkbox"/> Personal interviews      | <input checked="" type="checkbox"/> Historic photographs   |
| <input type="checkbox"/> Biographical encyclopedias     | <input type="checkbox"/> Obituary indexes         | <input checked="" type="checkbox"/> Other <u>see below</u> |

**BIBLIOGRAPHICAL REFERENCES**Books

"The Library," *Ellis Lawrence Building Survey*. v.2 (Eugene). Compiled by the Historic Preservation Program, School of Architecture and Allied Arts, University of Oregon; project directors, Michael Shellenbarger, Kimberly Lakin. [Salem, Or.] : State Historic Preservation Office, [1989].

Newspaper Articles

"Art Work in New Library Product of Delicate Work by Grads and Professors," *Daily Emerald*, 12 May 1937, 1.

"Individual Study Rooms One of Many Innovations of Modern New Library," *Daily Emerald*, 22 May 1937, 1.

"Fifteen Sentinels Guard Library Entrances," *Daily Emerald*, 3 October 1951, 8.

Original Documents

President's Ad Hoc Committee on the Housing of University Library Collections. "Library Facilities at the University of Oregon," Eugene, OR June 1979.

Photos

University Photograph Collection, Box 14-C, "Library - Additions, 1950," Special Collections and University Archives, UO Libraries.

University Photograph Collection, Box 14-C, "Library - Additions, 1966," Special Collections and University Archives, UO Libraries.

(See Continuation Sheet 2)

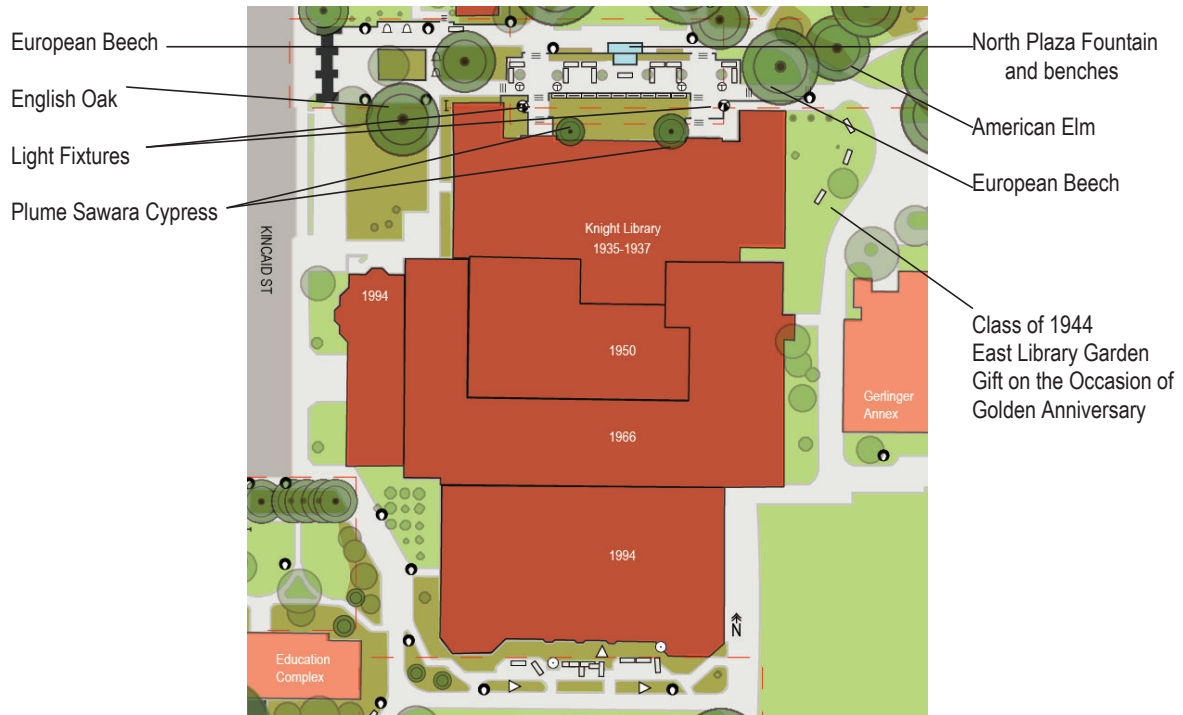
**RECORDING INFORMATION**

Researched: Erica Steverson and Sarah Helwick, Winter 2006  
 Recorded: Susan Johnson and University Planning Office, Summer 2006  
 Photo number or name: Knight Library

**PHOTOGRAPH**



**SITE PLAN**



**HISTORIC RESOURCE SURVEY FORM**

University of Oregon Cultural Resources Survey  
Eugene, Lane County, Oregon  
Summer 2006

**Continuation Sheet 1**

Section Architectural History Page 1

Description/dates of major additions/alterations:

First Addition: Lawrence (son, Abbot Lawrence), Tucker and Wallmann added 57,000 sq ft for additional stack space, mechanical room, elevators, stairs, ramps and Instructional Media Center in the basement, 1950. Second Addition: Claire K. Hamlin and B. King Martin added 100,000 sq ft, 1966. Third Addition: TBG Architects and Planners (Eugene); Shepley Bulfinch Richardson Abbott (Boston), design consultants added 132,000 sq ft, 1994.

Asbestos abatement: 1991. Exterior restoration: 1984. Handicap ramp: 1986. Misc. interior renovations: 1950, 1951, 1956, 1957, 1958, 1960, 1961, 1962, 1965, 1966, 1967, 1970, 1975, 1976, 1980, 1981, 1982, 1984, 1985, 1987, 1988, 1992, 1994, 1996, 1997, 2001, 2003, 2004.

**HISTORIC RESOURCE SURVEY FORM**

University of Oregon Cultural Resources Survey  
Eugene, Lane County, Oregon  
Spring 2006

**Continuation Sheet 2**

Section Bibliographical References Page 3

Websites

RiverFront Research Park, "Amenities," available from <http://researchpark.uoregon.edu/amenities.html>; Internet; accessed 13 March 2006.

Teague, Edward H. "Knight Library". *The Architecture of the University of Oregon: A History, Bibliography & Research Guide*. University of Oregon. Available from <http://libweb.uoregon.edu/guides/architecture/oregon/library.html#>; Internet; accessed 9 February, 2006.

Teague, Edward H. "Knight Library Heads". *The Architecture of the University of Oregon: A History, Bibliography & Research Guide*. University of Oregon. Available from <http://libweb.uoregon.edu/guides/architecture/oregon/xheads.html>; Internet; accessed 1 February 2006.

UO Info Graphics Lab, "Campus Maps," available from <http://geography.uoregon.edu/infographics/campusMaps/LineArtMap.pdf>; Internet; accessed 13 March 2006.

Other

National Register Nomination. Listed March 1990. Prepared by Kim Emerson, UO Historic Preservation Graduate program, 1989.

## **APPENDIX D - SECRETARY OF THE INTERIOR'S STANDARDS FOR REHABILITATION**

The Standards for Rehabilitation (codified in 36 CFR 67 for use in the Federal Historic Preservation Tax Incentives program) address the most prevalent treatment. "Rehabilitation" is defined as "the process of returning a property to a state of utility, through repair or alteration, which makes possible an efficient contemporary use while preserving those portions and features of the property which are significant to its historic, architectural, and cultural values."

### **THE SECRETARY OF THE INTERIOR'S STANDARDS FOR REHABILITATION**

The Standards (Department of Interior regulations, 36 CFR 67) pertain to historic buildings of all materials, construction types, sizes, and occupancy and encompass the exterior and the interior, related landscape features and the building's site and environment as well as attached, adjacent, or related new construction. The Standards are to be applied to specific rehabilitation projects in a reasonable manner, taking into consideration economic and technical feasibility.

1. A property shall be used for its historic purpose or be placed in a new use that requires minimal change to the defining characteristics of the building and its site and environment.
2. The historic character of a property shall be retained and preserved. The removal of historic materials or alteration of features and spaces that characterize a property shall be avoided.
3. Each property shall be recognized as a physical record of its time, place, and use. Changes that create a false sense of historical development, such as adding conjectural features or architectural elements from other buildings, shall not be undertaken.
4. Most properties change over time; those changes that have acquired historic significance in their own right shall be retained and preserved.
5. Distinctive features, finishes, and construction techniques or examples of craftsmanship that characterize a property shall be preserved.
6. Deteriorated historic features shall be repaired rather than replaced. Where the severity of deterioration requires replacement of a distinctive feature, the new feature shall match the old in design, color, texture, and other visual qualities and, where possible, materials. Replacement of missing features shall be substantiated by documentary, physical, or pictorial evidence.
7. Chemical or physical treatments, such as sandblasting, that cause damage to historic materials shall not be used. The surface cleaning of structures, if appropriate, shall be



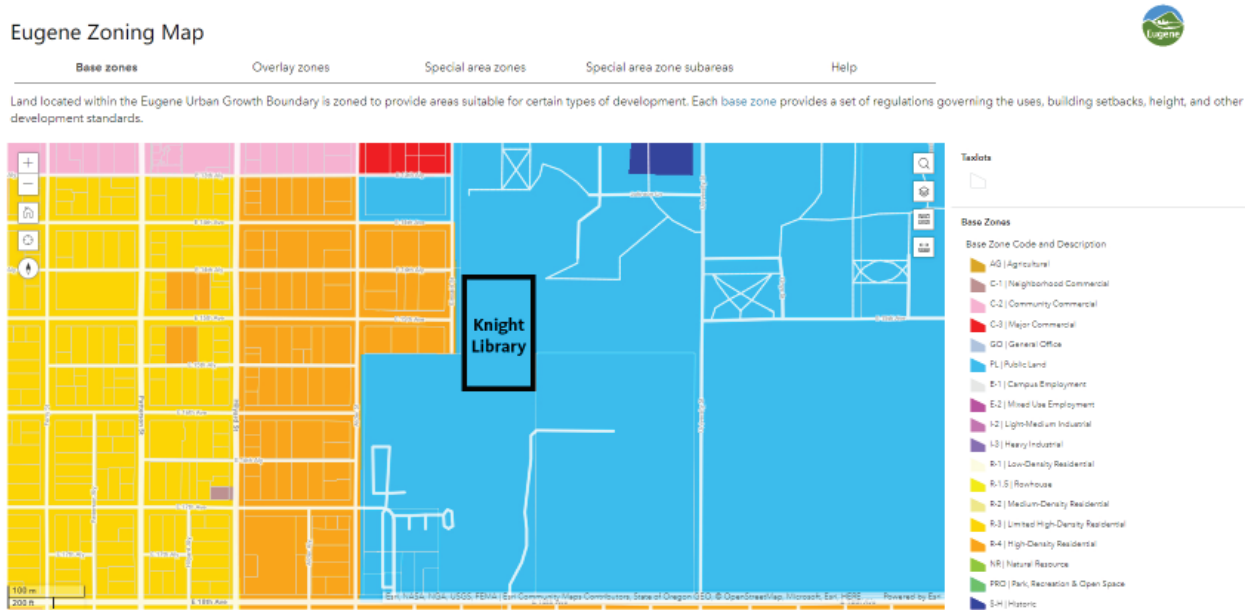
undertaken using the gentlest means possible.

8. Significant archaeological resources affected by a project shall be protected and preserved. If such resources must be disturbed, mitigation measures shall be undertaken.

9. New additions, exterior alterations, or related new construction shall not destroy historic materials that characterize the property. The new work shall be differentiated from the old and shall be compatible with the massing, size, scale, and architectural features to protect the historic integrity of the property and its environment.

10. New additions and adjacent or related new construction shall be undertaken in such a manner that if removed in the future, the essential form and integrity of the historic property and its environment would be unimpaired.

## APPENDIX E - CITY OF EUGENE ZONING MAP FOR KNIGHT LIBRARY



Knight Library is located within the following City of Eugene zones:  
PL - Public Land

# APPENDIX F - 2017 HISTORIC KNIGHT LIBRARY ART & ARCHITECTURE GUIDE, BY EDWARD H. TEAGUE

## HISTORIC KNIGHT LIBRARY: ART & ARCHITECTURE – 1<sup>st</sup> FLOOR GUIDE

Architect: Lawrence, Holford & Allyn; Ellis F. Lawrence, principal.  
Plans: July 1935. Completion: May 1937. Dedication: October 1937.

### EXTERIOR

The material of the library's façade was brick from the Pacific Face Brick Co., Willamina, Oregon, and cast stone work fabricated by Ernest Thomas Cast Stone Company, Portland.

1. Landscape: Terrace, Fountain, Seating ensemble. Design: Frederick A. Cuthbert. Cast stone fabricated by Ernest Thomas Cast Stone Co.
  2. Façade: Cornice (squirrels, etc.). \*
  3. Façade: Frieze (Heads). Design: Louise Utter Pritchard and Edna Dunberg. Fifteen heads reproduced to total forty-one. Cast by Ernest Thomas Cast Stone Co.
  4. Façade: Plaques. The plaques represent seven disciplines: Ars, Literae, Natura, Philosophia, Societas, Historia, Religio. \*
  5. Façade: Plaques. Text of plaques split over two entrances: "Ye shall know the truth / And the truth shall make you free."
  6. Façade: Exterior ornamentation, including symbolic elements, a flame, a cross. \*
  7. Light Fixtures. Design: Frederick Baker.
- \* Design: Ellis F. Lawrence and firm. Cast by Ernest Thomas Cast Stone Co., Louis Schubert chief designer.

### INTERIOR. 1<sup>st</sup> Floor

#### ENTRANCE HALLS (EAST & WEST)

8. Interior Design. Decorated with varieties of marble; gilded ceiling, elaborate doors, bronze ornamentation. Light fixtures by Frederick A. Baker.
9. Entrance Doors. One pair with bronze decoration.
10. Interior Doors. The interior bronze doors cover three openings in the vestibule which lead to the main corridor and stairwells. There is a pair in the center and a single door for each side opening.

#### CORRIDOR

11. *Arthur Bennett Hall Memorial Gates*. Design: O. B. Dawson.  
Three iron gates designed to commemorate UO president Arthur Bennett Hall. Originally designed and placed in three openings in a wall which formed a corridor separating the circulation desk from the Browsing Room. The gates are now located at security turnstiles and at the Browsing Room central entrance.

#### ADELAIDE CHURCH BROWSING ROOM

12. Interior Design: Brownell D. Frazier.  
In addition to the rugs, furniture, draperies, and floor lamps designed by Frazier, the room originally had three table lamps designed by students and a Coromandel Chinese screen. The rugs and floor lamps (without shades) have survived. The screen is now in the Paulson Reading Room. The original light fixtures by Baker were replaced in the 1990s renovations.
13. *Pan*. Artist: Phyllis Muirden. Carved wood. Wood carver unknown. Attributed to Arthur Clough or Herbert Rayner.
14. *Diana the Huntress*. Artist: Phyllis Muirden. Carved wood. Wood carver unknown. Attributed to Arthur Clough.
15. *Untitled (Kneeling Male Figure Wearing a Hat)*. Stone sculpture. Artist: S. Neal Gardner.
16. *Untitled (Kneeling Female Figure)*. Stone sculpture. Artist: Nellie G. Best.

#### ROWE CONFERENCE ROOM

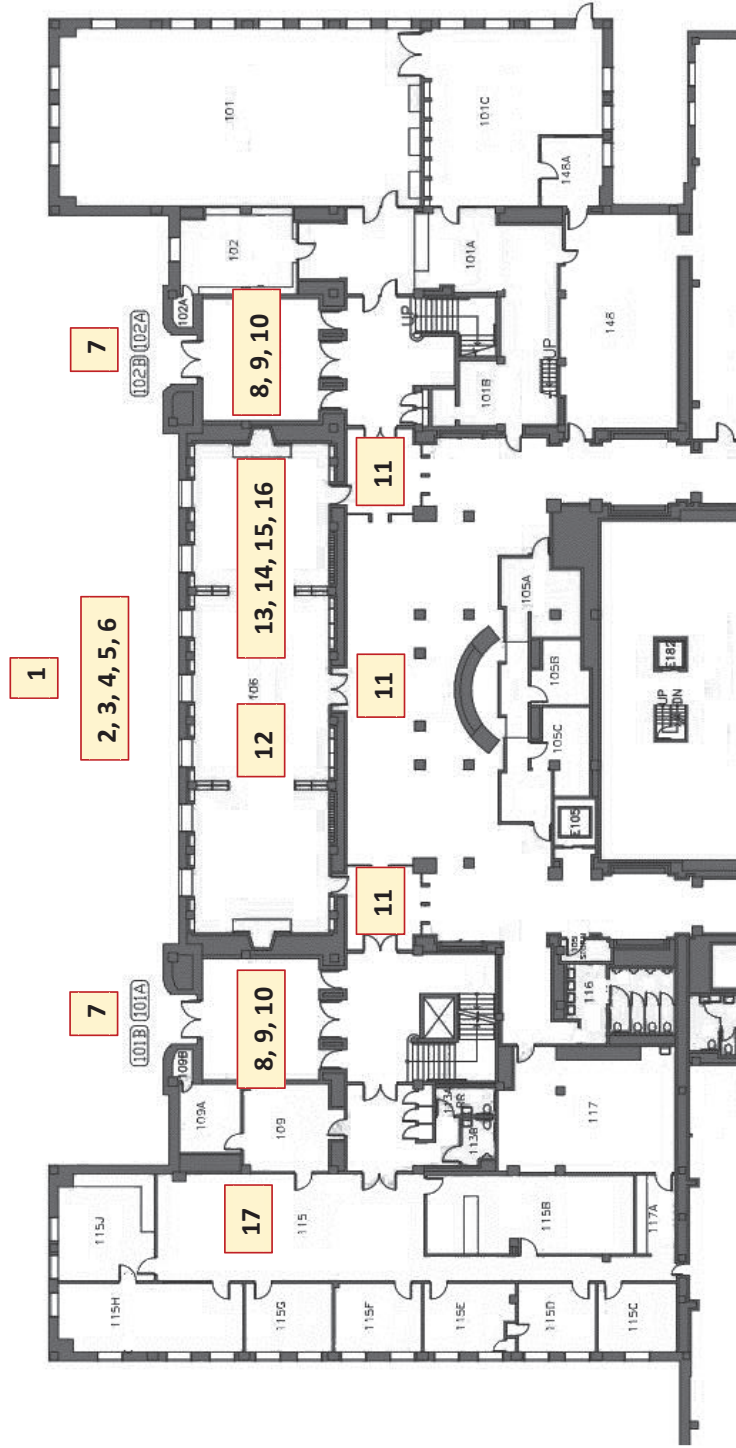
17. *Building the Library*. Artist: Gordon W. Gilkey.  
Thirty etchings constituting Gilkey's 1936 thesis, "A Series of Etchings Showing Construction Progress of the University of Oregon Library." A few prints are on display in the Rowe Conference Room, Knight Library.

---

Find out more: [Historic Knight Library: Art & Architecture](https://researchguides.uoregon.edu/historic-knight), [researchguides.uoregon.edu/historic-knight](https://researchguides.uoregon.edu/historic-knight)

Edward H. Teague, March 15, 2017

HISTORIC KNIGHT LIBRARY: ART & ARCHITECTURE – 1<sup>ST</sup> FLOOR GUIDE



- EXTERIOR**
- 1. Landscape: Terrace & Fountain
  - 2. Façade: Cornice
  - 3. Façade: Frieze [Heads]
  - 4. Façade: Plaques [seven disciplines]
  - 5. Façade: Plaques [entrances]
  - 6. Façade: Exterior Decoration & Symbols
  - 7. Light Fixtures, entrance
- ENTRANCE HALLS (EAST & WEST)**
- 8. Interior Design (marble)
  - 9. Entrance Doors (bronze)
  - 10. Interior Doors (bronze)
- CORRIDOR**
- 11. Arthur Bennett Hall Memorial Gates (iron)
- ADELAIDE CHURCH BROWSING ROOM**
- 12. Interior Design
  - 13. *Pan* (wood carving)
  - 14. *Diana the Huntress* (wood carving)
  - 15. *Kneeling Male Figure* (sculpture)
  - 16. *Kneeling Female Figure* (sculpture)
- ROWE CONFERENCE ROOM**
- 17. Building the Library (prints)

Find out more: [Historic Knight Library: Art & Architecture](https://historic-knight.library.uoregon.edu/researchguides), [researchguides.uoregon.edu/historic-knight](https://researchguides.uoregon.edu/historic-knight)

## EXTERIOR



1. Landscape: Terrace, Fountain, & Seating ensemble



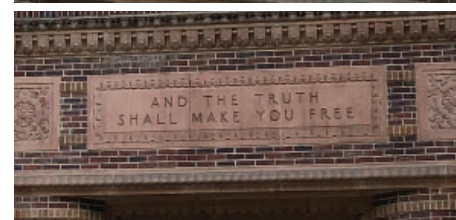
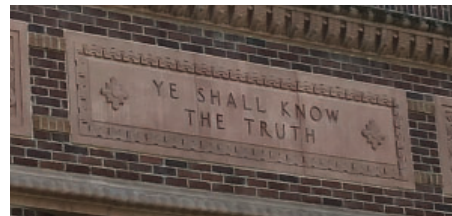
3. Facade: Frieze (Heads)



4. Facade: Plaques ("Ars, Literae, Natura, Philosophia, Societas, Historia, Religio")



2. Facade: Cornice (squirrels, etc.)



5. Facade: Plaques ("Ye Shall Know the Truth" / "And the Truth Shall Make You Free")



6. Facade: Exterior ornamentation (flame & cross on balconies)



7. Light Fixtures

INTERIOR - 1ST FLOOR - Entrance Halls (East & West); Corridor



8. Interior Design: marble; gilded ceiling; elaborate bronze doors, bronze ornamentation; light fixtures



9. Entrance Doors: Bronze Decoration



10. Interior Doors: Bronze



11. Arthur Bennett Hall Memorial Gates

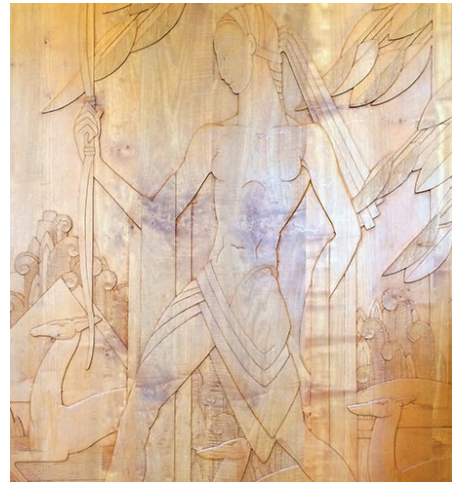
## INTERIOR - 1ST FLOOR - Adelaide Church Browsing Room (Rm 106)



12. Interior Design: rugs, furniture, draperies, and floor lamps



13. "Pan": Carved Wood



14. "Diana the Huntress": Carved Wood

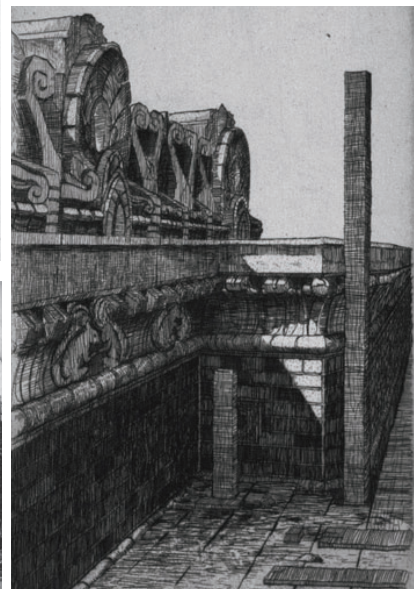
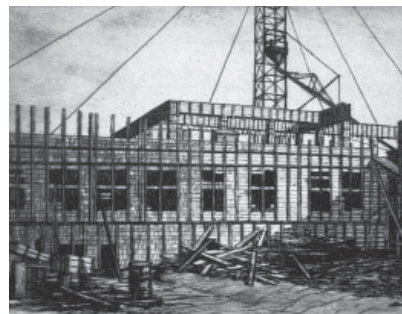
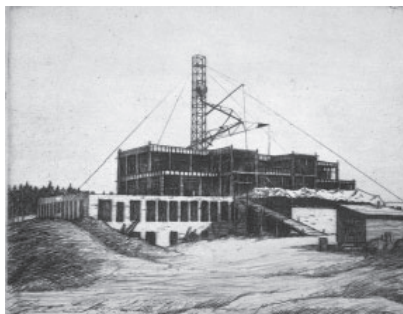
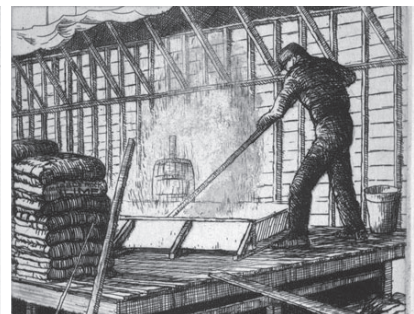
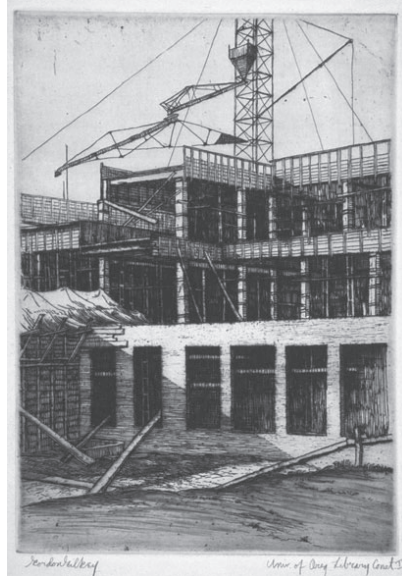
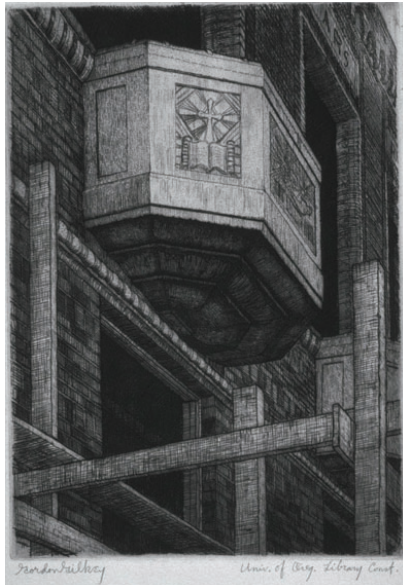


15. Stone Sculpture (Kneeling Male Figure Wearing a Hat)



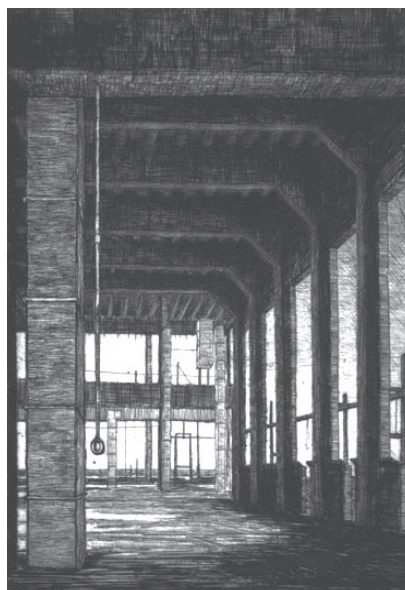
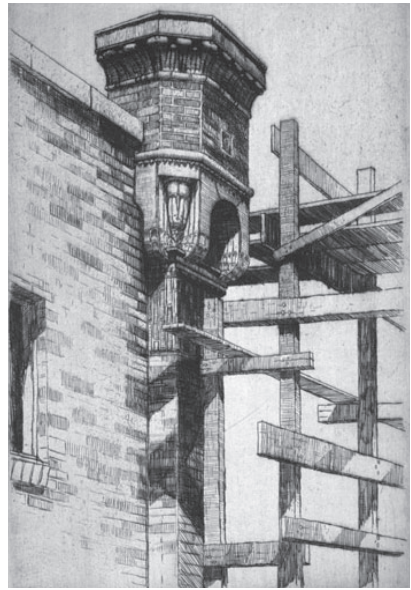
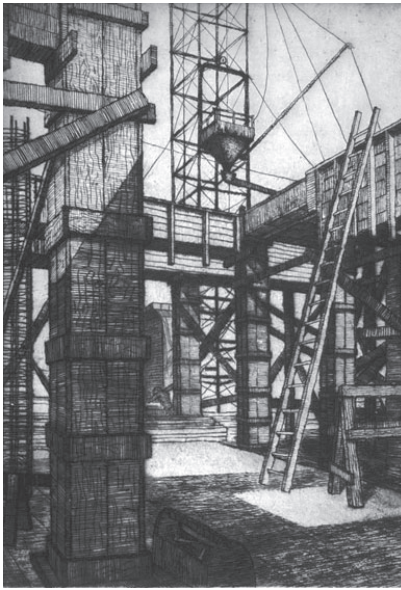
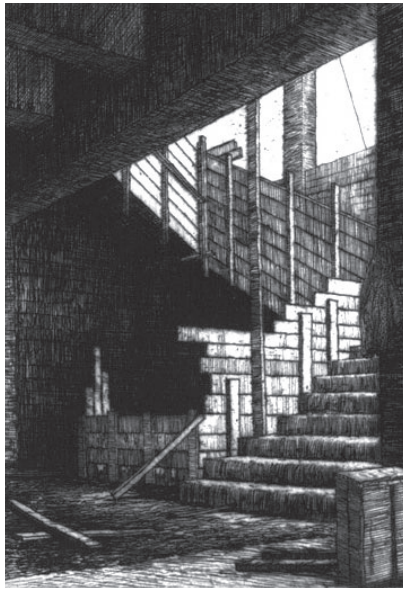
16. Stone Sculpture (Kneeling Female Figure)

# INTERIOR - 1ST FLOOR - Rowe Conference Room (Rm 115)



17. Building the Library: Thirty etchings by Gordon W. Gilkey

INTERIOR - 1ST FLOOR - Rowe Conference Room (Rm 115)



17. Building the Library: Thirty etchings by Gordon W. Gilkey



## HISTORIC KNIGHT LIBRARY: ART & ARCHITECTURE -- 2nd FLOOR GUIDE

### STAIRWELL (WEST)

1. **Development of the Arts.** Artist: Arthur Runquist. Paint on canvas affixed to niche in wall. A mural of eight separate vignettes and other pictorial elements painted on canvas affixed to a niche. Read panels left to right, bottom to top. Text by Arthur Runquist.
  1. **Early Primitive Period.** Cave dwellers paint images on their walls, sew skins and shape earthenware.
  2. **Later Primitive Period.** Humans weave and dye fabric, carve stone for images and weapons and decorate pottery.
  3. **Egyptian.** Architecture becomes an art form along with sculpting, mural painting and decorating scrolls.
  4. **Greek Period.** Performing arts develop, manifested by music, drama and dance. Human figure is depicted more realistically. Sculpture and woodcarving become more sophisticated.
  5. **Medieval Period.** The influence of the Christian Church is seen in illumination of books, music and stained glass.
  6. **Renaissance.** Artists expand their media; illustrated by glass blower and goldsmith. Musical instruments are refined. Murals become more elaborate as depicted by Michelangelo.
  7. **20th Century.** Great modern artists are depicted by Paderewski, Shaw, Caruso, Bernhardt and Orozco. Cinema and radio symbolize emerging media.
  8. **Modern Era.** Campus scene provides setting for the arts as formal courses of study. "ARS" cast in stone, Oregon fight song and Deady Hall represent the strength of the arts at the University of Oregon.
2. **Mission of the University.** Artist: N. B. Zane. Text: Frederick G. Young. A mural of decorative text painted on canvas affixed to a niche.

### ROOF PATIO (WEST)

3. **Cougar and Cub.** Artist: Louise Utter Pritchard. Carved stone sculpture. Current location unknown.

### UPPER DIVISION READING ROOM (now PAULSON READING ROOM)

4. **Interior Design.** Architect: Ellis F. Lawrence and associates. Lawrence is credited with the design of the interior cornice. Light fixtures by Frederick A. Baker.
5. **Oregon Vistas.** Artist: Arthur Clough, assisted by: Ross McClure and Jim De Broekert.
6. On the east and west walls of the room are three large panels carved in cedar which depict life in the Depression era as well as the days of the Pioneers. Added to the original design and part of the triptych concept are nine vignettes. Each large panel is c. 30 in. wide by 9 ft. tall. Each lower panel vignette is approximately 1 ft x 1 ft.

#### [5] West wall:

Left: *Halcyon Days at the foot of Mount Jefferson*  
Center: *Trails in the Shadow of Mount Hood*  
Right: *Below the Spires of Three-Fingered Jack*  
Lower: *The Release of Youth from Depression Conditions*

#### [6] East wall:

Left: *Building Crew Below Mt. Washington*  
Center: *Construction Below the Three Sisters*  
Right: *A Pack-Train Bridge Below Mt. Thielson*  
Lower: *The Release of Youth from Depression Conditions*

### STAIRWELL (EAST)

7. **Development of the Sciences.** Artist: Albert C. Runquist. Paint on canvas affixed to niche in wall. A mural of eight separate vignettes and other pictorial elements painted on canvas affixed to a niche. Figure at the base of the tree represents humanity rising to the erect position of a thinking being. Read panels left to right, bottom to top. Text by Arthur Runquist.
  1. **Stone Age.** Family group discovers use of fire for warmth and cooking and utilizes clubs and stones for hunting, agriculture and protection. Animal skins provide warmth.
  2. **Iron Age.** Humans learn to work metal into weapons and articles of adornment. Animals are domesticated and agriculture is advanced.
  3. **Early Egyptian.** Humans discover the principles of lever, roller and inclined planes and are forced to work in groups making possible large buildings and monuments. The invention of the sundial, the crude plow and hieroglyphics make possible the measurement of time, ease human work and provide a means of recording human thought.
  4. **Greek Period.** Astronomical discoveries give knowledge of the broader world and universe, explaining many phenomena affecting human life. Mathematics becomes the basis of all future quantitative science, including architecture and engineering. Intellectual activity and education are valued.
  5. **Renaissance.** The invention of paper making and printing and the development of navigation based on astronomy bring parts of the world closer together and, at the same time, expand the civilized world. Newton formulates his law of gravity. Human anatomy is explored.
  6. **18<sup>th</sup> & 19<sup>th</sup> Centuries.** Faraday experiments with electricity. Gear-based mechanisms are adapted for clocks and steam powered engines.
  7. **20th Century.** Students study traditional knowledge. Research leads to new discoveries in physics, chemistry, biology, botany, engineering, and geology. University of Oregon setting includes The Pioneer, Johnson and Deady Halls, University seal and Oregon grape.
  8. **Modern Period.** Figures at levers and switchboard symbolize human control of power. Gas engine, X-ray, airplane, observatory and skyscrapers represent applications of scientific development. Einstein, Madame Curie, Marconi, Edison and Burbank typify modern scientific pioneers.
8. **Opportunity for Growth of Oregon.** Artist: N. B. Zane. Text: Luella Clay Carson. A mural of decorative text painted on canvas affixed to a niche.

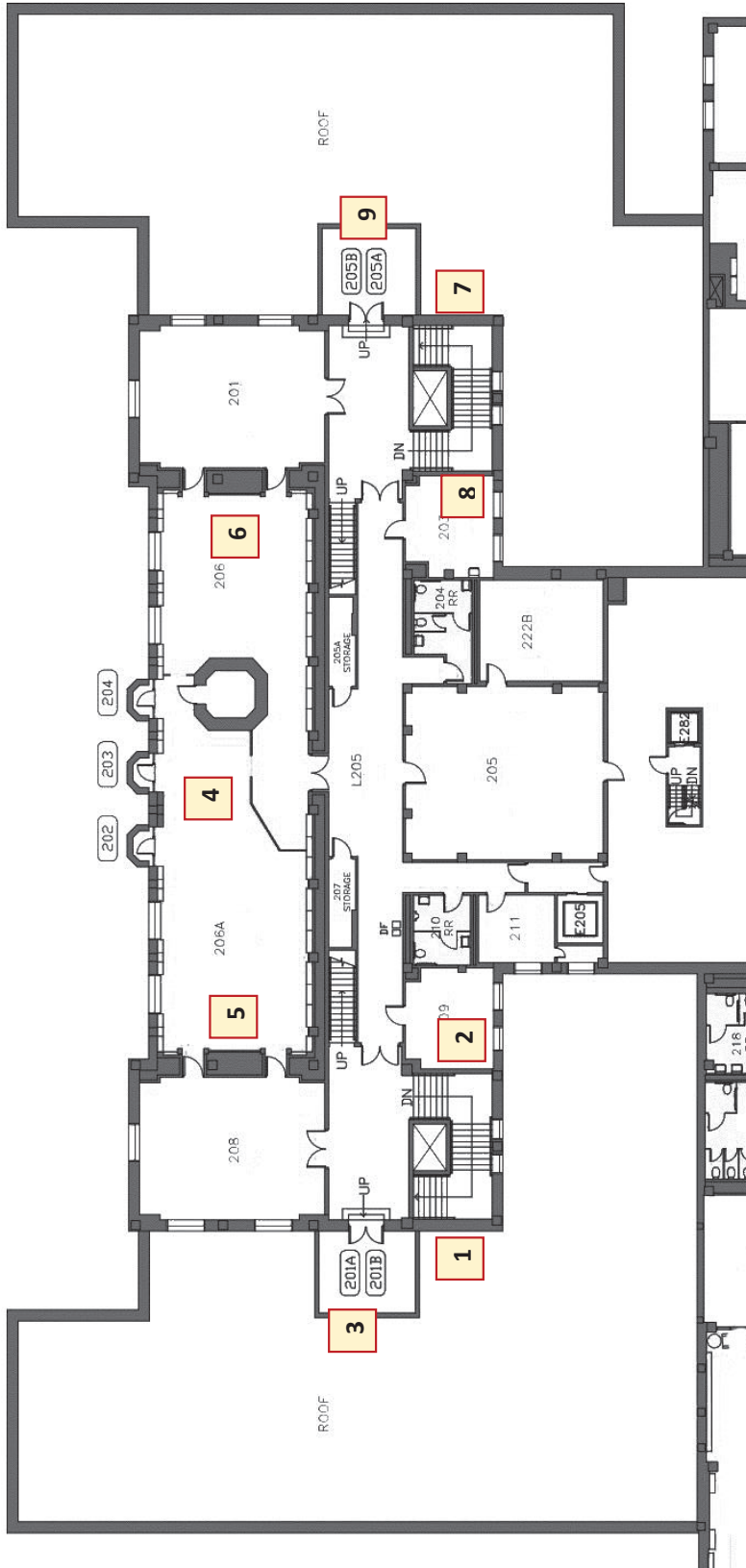
### ROOF PATIO (EAST)

9. **Deer and Fawn.** Artist: Louise Utter Pritchard. Carved stone sculpture. Original location: Patio, east wing roof. Current location: South Reading Room.

---

Find out more: **Historic Knight Library: Art & Architecture**, [researchguides.uoregon.edu/historic-knight](https://researchguides.uoregon.edu/historic-knight)

## HISTORIC KNIGHT LIBRARY: ART & ARCHITECTURE – 2<sup>ND</sup> FLOOR GUIDE



### STAIRWELL (WEST)

1. Development of the Sciences, mural
2. Mission of the University, mural

### ROOF PATIO (WEST)

3. Cougar & Cub, location unknown

### UPPER DIVISION READING ROOM (now PAULSON READING ROOM)

4. Interior design
5. Oregon Vistas (cedar triptych), west wall
6. Oregon Vistas (cedar triptych), east wall

### STAIRWELL (EAST)

7. Development of the Arts, mural
8. Opportunity for Growth of Oregon, mural

### ROOF PATIO (EAST)

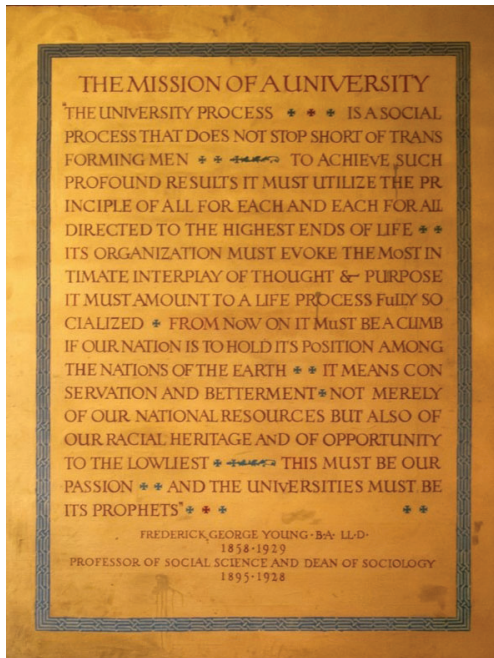
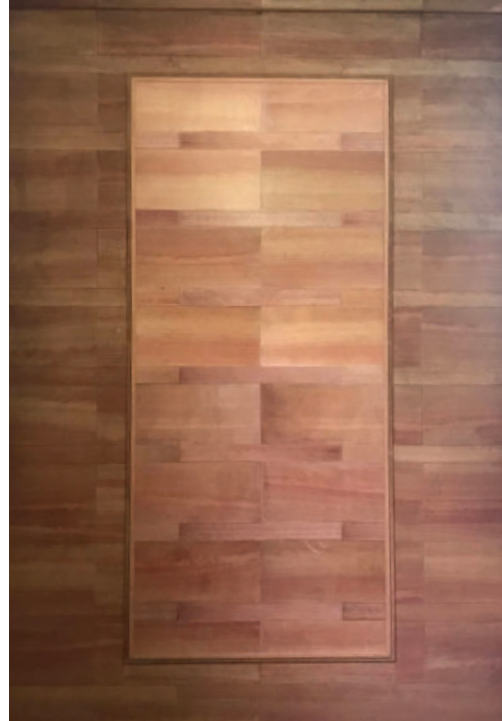
9. Deer & Fawn, sculpture, now in South Reading Room

Find out more: [Historic Knight Library: Art & Architecture](https://researchguides.uoregon.edu/historic-knight), [researchguides.uoregon.edu/historic-knight](https://researchguides.uoregon.edu/historic-knight)

## INTERIOR - 2ND FLOOR - Stairwell (West)



11. Mural: "Development of the Arts", paint on canvas (covered, 2020)



12. Mural: "The Mission of A University", paint on canvas (covered, 2020)



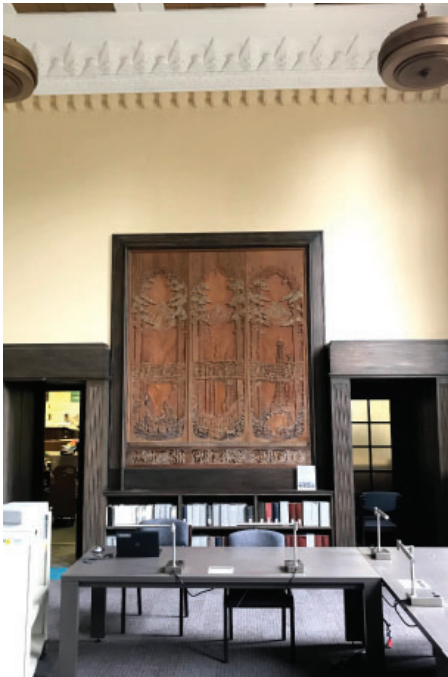
INTERIOR - 2ND FLOOR - Roof Patio (West), Special Collections  
Paulson Reading Room (Rm 206 & 206A)



3. Carved Stone Sculpture: Cougar and Cub (originally located on roof patio; current location unknown)



4. Interior Design



5. Oregon Vistas: Cedar carved panel (west wall)

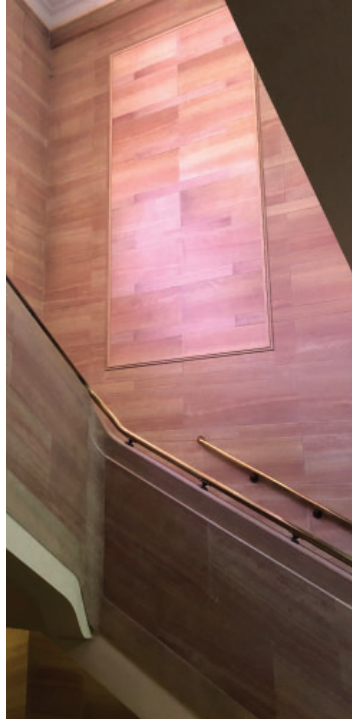


6. Oregon Vistas: Cedar carved panel (east wall)

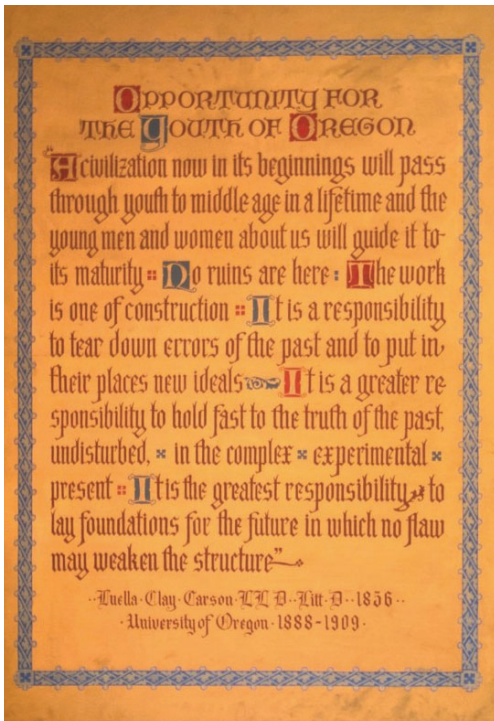
INTERIOR - 2ND FLOOR - Stairwell (East), South Reading Room



7. Mural: "Development of the Sciences", paint on canvas (covered, 2020)



9. Carved Stone Sculpture: Deer and Fawn



8. Mural: "Opportunity for Growth of Oregon", paint on canvas (covered, 2020)

