



15. North Fireplace - The painting over the north fireplace depicts a mountainous landscape with several women frolicking in a meadow. The painting is untitled and was painted by Alfred Schroff in 1921.

Significance: High

Integrity: Excellent



15a. Chest - A chest made of oak. It is English in origin with Jacobean and Cromwellian characteristics. Its front features hand-carved fleur-de-lis in three diamond shaped panels. These panels are crested with scrolled leaves.

Significance: High

Integrity: Excellent



16. Chair - This mahogany arm chair was made by McCleelad Mfg. Co. of Los Angeles, California to be a simplified twentieth century version of a Charles I style chair. The simplification of the chair was due to production techniques.

Significance: Medium

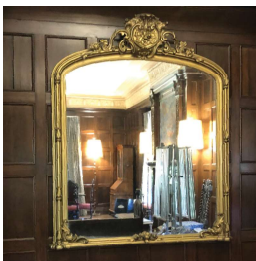
Integrity: Good



17. Grandfather Clock - This grandfather clock is made of carved oak which depicts monkeys and animal-like faces. The clock's pendulum is behind a wooden door. The hood features two turned columns on each side of a scroll pediment with urn finials. The face is arched and made of brass. It is engraved with a landscape scene with a gold sun over the "12". There is a small plaque above this scene with an engraved name that reads "Sam/Dorchester"

Significance: High

Integrity: Good



18. Mirror - This large rectangular wall mirror is distinguishable by its gold colored frame with column and scroll details, including an elaborate crest at the top of the frame.

Significance: Low

Integrity: Excellent



19. Sofa/Bench - This wood sofa/bench is patterned after Gothic church furniture. The two shortest ends of the bench are enclosed by a solid panel pieced with three openings that resemble lancet windows and are topped by a flower finial. A carved column is on the from edges of these ends.

Significance: High

Integrity: Excellent



20. Side Table - This is a solid sided fold-over lead table made of dark stained oak. It is a direct copy of a documented older piece. The form is commonly called an Elizabethan Folding Table. This one features six legs connected by carved rectangular stretchers.

Significance: High



21. Desk/Secretaire - This English desk/secretaire is veneered with burled walnut. The top of the desk is slanted with a key hold which opens to a writing surface.

Significance: Medium

Integrity: Excellent

Key Definitions of Historic Ranking

Significance: The meaning or value ascribed to a structure, landscape, object or site based on the National Register criteria for evaluation.

High: Considerable contribution to the history of the campus and its growth.

Medium: Noteworthy contribution to the history of the campus and its growth.

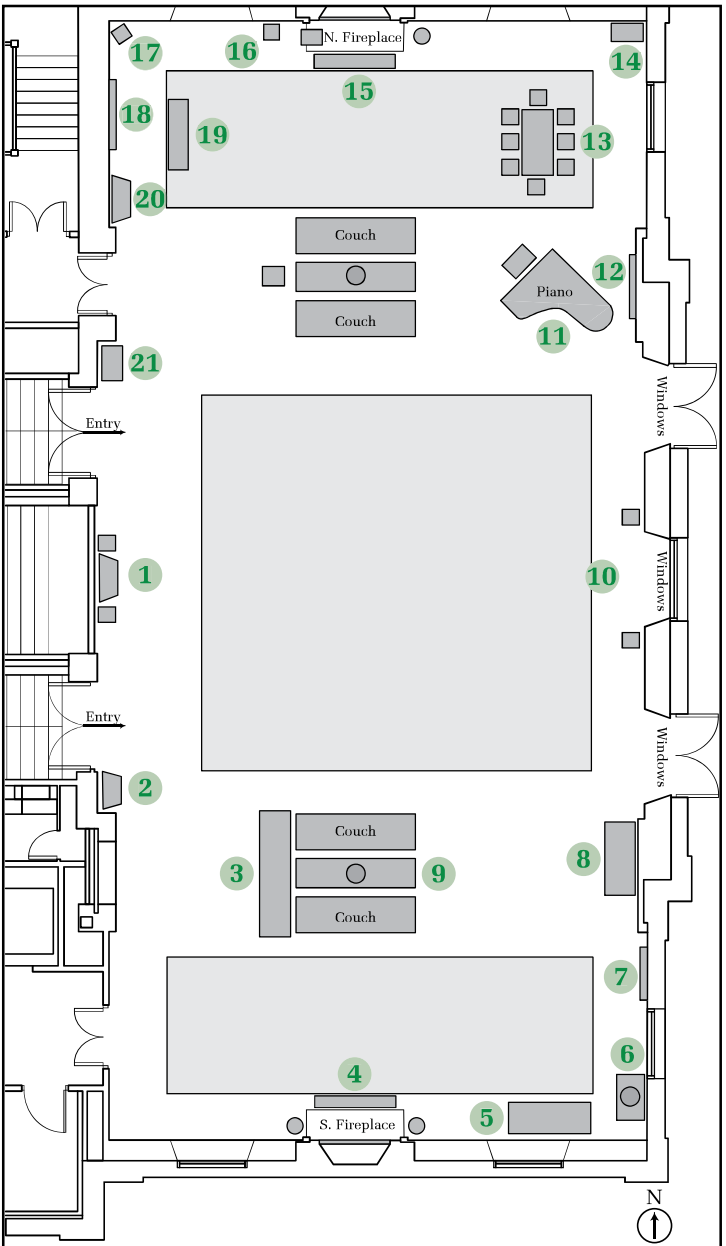
Low: Discernible contribution to the history of the campus and its growth.

Integrity: The authenticity of a property's historic identity, evinced by the survival of physical education characteristics that existed during the property's historic or prehistoric period.

Excellent: Retains a very high percentage of original fabric, and the original design intent is apparent.

Good: Retains a significant percentage of original fabric, with discernible design intent.

Fair: Original fabric is present but diminished.



University of Oregon

Self-guided Tour, October 2021
Campus Planning



UNIVERSITY OF OREGON

In 2016, a renovation of the Lounge revealed additional interior architectural details that weren't previously known, such as a glaze finish highlighting the relief along the ceiling trim, the consistency of furniture arrangements over time, and walls that were made to look like aged, Caen stone by being painted with buttermilk to give an aged appearance to the plaster.



1. Chairs - These oak arm chairs are slightly different but highly carved. The blue damask fabric seat cushions are not original.

Significance: Medium

Integrity: Good

1a. Table - It was an American tradition to elongate Jacobean elements of furniture, as evident in this wooden 1920's adaption of the Jacobean table. This is especially evident in this table through its bulbous legs and overall proportions.

Significance: High

Integrity: Excellent



2. Cabinet - This is a Gothic style cabinet made from dark stained oak. The front door of the cabinet is highly carved and the top of the cabinet is flat and corniced.

Significance: High

Integrity: Excellent



3. Table - This 6-legged wooden table is part of the revival furniture that was popular in reaction to Victorian styling. This piece illustrates the reproduction of a Renaissance piece. Notice the artificial induced aging on the stretcher.

Significance: High

Integrity: Excellent



4. South Fireplace - The painting over the south fireplace depicts a pasture like landscape with several women frolicking in a meadow. The painting titled "Monterey Evening" by Alfred Schroff, created in 1921, is loosely rendered and the color pallet is limited to pastel colors.

Significance: High

Integrity: Excellent

4a. Bench - A wrought iron bench with a leather seat. A memorandum from 1977 was written indicating plans to reupholster the bench, but it is uncertain whether it was reupholstered or not.

Significance: High

Integrity: Good

4b. Silent Butler - Brass with black turned wood handle.

Significance: High

Integrity: Good

4c. Kettle and Trivet - Kettle, copper, with handle and lid. Used to hold hot kettles.

Significance: High

Integrity: Good



5. Sofa/Bench - This oak sofa is of a modern design that is attempting a 17th century English form. The seat of the sofa was estimated for reupholster in 1977. The fabric was at one time a red vinyl and has either faded or been replaced with a beige leather.

Significance: High

Integrity: Good



6. Cabinet and Punch Bowl - This heavily carved oak cabinet is patterned after an almost identical German Renaissance piece. The linen fold side panels show the beginnings of the Renaissance style. The ceramic punch bowl on top of the cabinet is a Staffordshire design and German-made.

Significance: High/Medium

Integrity: Excellent



7. Irene Gerlinger Painting - This painting depicts a portrait of Irene Hazard Gerlinger. It was painted by Sally Haley.

Significance: Medium

Integrity: Excellent



8. Table - The wooden draw-top table shows the influences of the 17th century style on 20th century American furniture. The four legs of the table are connected by an H-stretcher near their bulbous feet. Near the top of the legs is a stack of three bulb forms.

Significance: High

Integrity: Excellent



9. Sofas - Total of four over stuffed sofas. The sofas were reupholstered in 2002. Their original material was a blue fabric and was replaced with another blue colored fabric.

Significance: High

Integrity: Good

9a. Table - Total of two wooden sofa tables with four stretches connecting all four legs on each table. They have a deep skirt supporting the table top.

Significance: High

Integrity: Excellent

9b. Lamp - This table lamp, Chinese, hand painted in yellow and blue with oriental designs. Original lamp shades were octagonal in shape and tapered from the bottom to the top. The shades have been replaced with a round drum shape with a slight taper.

Significance: High

Integrity: Good



10. Chairs - A revival arm chair made in the style of Louis XIII from wood with upholstered seat and back. The chairs arms are distinctively curved. At one time it had yellow brocade fabric and was reupholstered in 2010 with a white damask fabric with floral designs.

Significance: High

Integrity: Good



11. Grand Piano - A black grand piano that has an associated bench. The location of the original piano bench is unknown. The existing bench is presumed to be not original to historic photographs.

Significance: High

Integrity: Good



12. Tapestry - This tapestry is presumed to depict a scene that is English in style and subject, depicting two figures with two flags, a lion, and a unicorn. Originally it had blue tones but has become quite faded over time.

Significance: High

Integrity: Good



13. Table - This wooden table is characterized by a repetitive carved motif of stretched arches around the skirt. The four legs are connected by stretchers near the square feet. Like the feet, the top of the legs where they meet the skirt are square, while the middle of the legs have turned forms.

Significance: High

Integrity: Excellent

13a. Chairs - These matching chairs are made of wood with upholstered seats and splats. The back is composed of wooden spiral stiles, an upholstered spat with carved wooden frame, and is topped by a carved crest that features two lions.

Significance: High

Integrity: Good



14. Cabinet - This is an antique cabinet with a writing desk made from walnut with a burl veneer. English in origin, its design shows the Dutch influence of William and Mary. Above the desk is the cabinet with two wooden framed glass doors for the display of its contents.

Significance: Medium

Integrity: Good