

SECTION 05 50 00 – Metal Fabrications

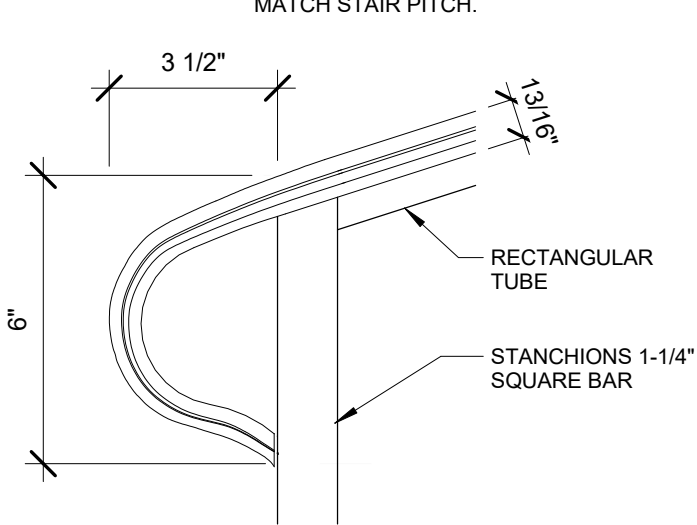
Document revision history: 08/2019 – Original Publication

Date	Section	Description of Change
1/14/26	1.1, d & f. , 2.1,d. , 3.1,d.	Update historic profile finish & details

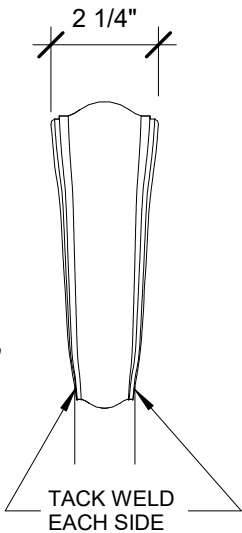
PART 1 – GENERAL**1.1 Summary**

- a. Section 33 40 00 for Gratings.
- b. Handrails at Historic Buildings: Design teams will be notified at the start of a project whether or not the building and/or the scope qualifies as ‘historic’.
- c. Comply with Campus Plan policies related to historic buildings.
- d. Finish: Where existing railing is installed, powder-coat color to match the historic metal finish. If the building has no existing metalwork, use powder-coated black.
- e. Design: If the building has an existing rail design, continuity of the building rails supersedes that of the standard.
- f. See next page for approved historic rail end details and profile.

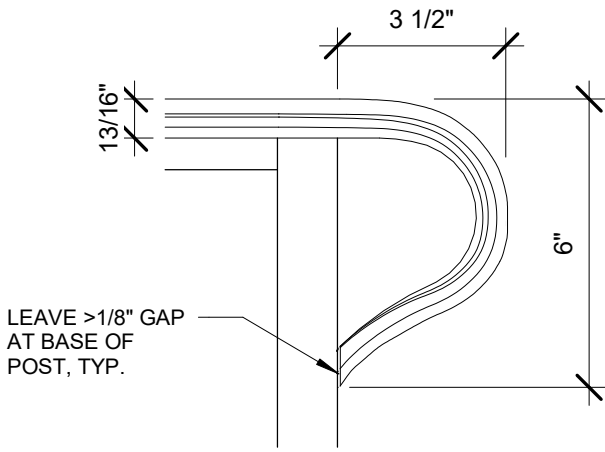
NOTE: SLOPED END OCCURS AT BOTTOM OF STAIRS WITH STRAIGHT RAILING RUN. SLOPED RAILING TO MATCH STAIR PITCH.



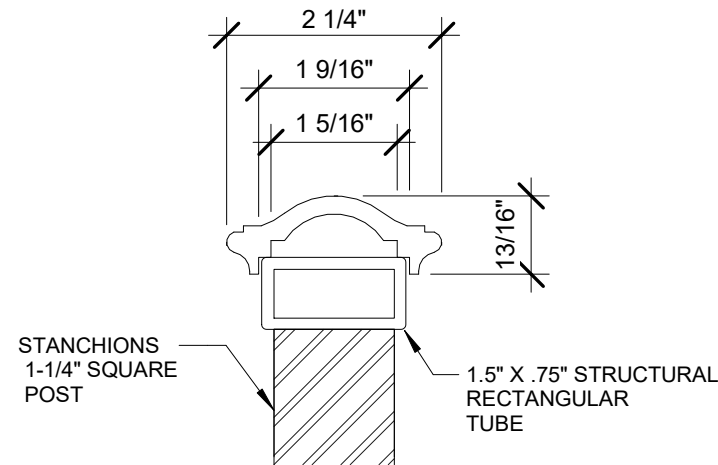
SLOPED HANDRAIL END
3" = 1'-0"



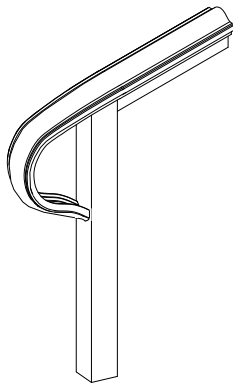
FRONT VIEW - RAILING END
3" = 1'-0"



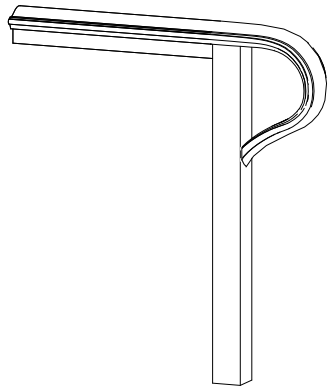
STRAIGHT HANDRAIL END
3" = 1'-0"



HANDRAIL SECTION
6" = 1'-0"



3D SLOPED RAIL



3D STRAIGHT RAIL

1.2 Submittals

- a. Use of decorative metals requires prior approval through UO Substitution Request.

1.3 Qualifications

- a. Not applicable.

PART 2 – PRODUCTS**2.1 Materials**

- a. Avoid use of exposed steel with ground finish. If exposed steel is used, grinding and finishing of the exposed steel shall be limited to a 10ft elevation above finish floor(s), or at reasonable 'eye-level' elevation for individual projects. Grinding and finishing of all exposed material is cost prohibitive.
- b. On metal stairs, provide metal stair nosings rather than concrete.
- c. Exterior Handrails and Railings: 1-1/2 inch round handrails.
- d. Historic metal railing material grade to be A36.

PART 3 – EXECUTION**3.1 Installation**

- a. All exterior fasteners are to be stainless steel or hot-dipped galvanized.
- b. Any metal within, or on walking surfaces, must incorporate non-slip texture.
- c. Permanent Ladders and Ships Ladders:
 - Required at roof hatches and exterior access to different roof elevations that are not provided with separate roof hatches.
 - Must include an extension above opening, edge, etc. per OSHA requirements.
 - Width, rise, and run (for ships ladders) must be adjusted to accommodate for the difficulty of traveling the steps with tools.
 - NO offset step ladders.
 - Must be at least the width of the door or hatch that accesses a space.
- d. Historic Handrails:
 - Handrail shall return to post. Provide gap between handrail return and post, not to exceed an 1/8" inch. Tack welds to be concealed and ground smooth.

3.2 Interface with other products

- a. Coat and/or seal all items prior to installation as much as able; special consideration must be given in occupied buildings.

3.3 Testing

- a. Not applicable.

3.4 Training

- a. Not applicable.