

**LANDSCAPE RESOURCE SURVEY**  
University of Oregon Campus Heritage Landscape Plan  
Eugene, Lane County, Oregon • Spring 2016

**n RESOURCE IDENTIFICATION & SUMMARY**

---

**LANDSCAPE AREA NAME**

Dads' Gates Cloverleaf

**HISTORIC NAME(S)**

None

**CAMPUS PLAN DESIGNATION**

Green / Parking

**CURRENT HISTORIC DESIGNATION**

No Historic Designation

**ERA(S) OF GREATEST SIGNIFICANCE**

Lawrence / Cuthbert Era

Mid-Century Era

**LEVEL OF SIGNIFICANCE**

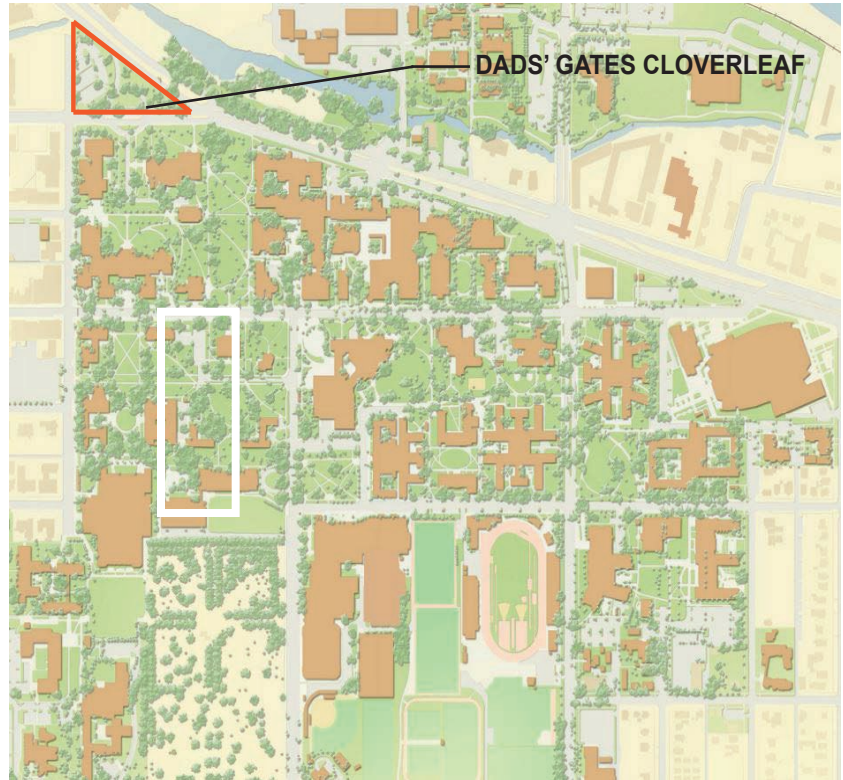
Medium

**LEVEL OF INTEGRITY**

Good

**RANKING**

Tertiary

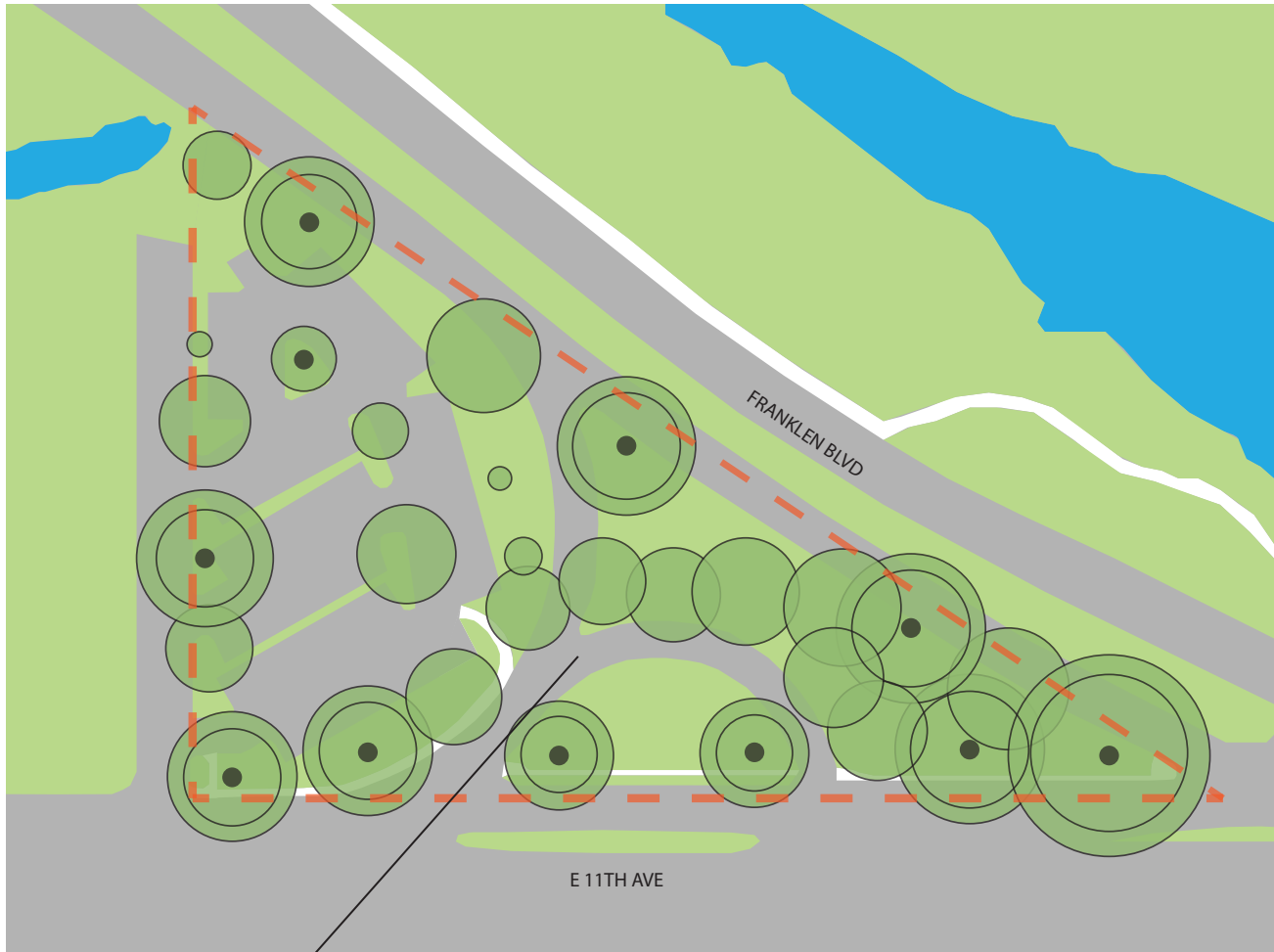


*View Looking North from bus station.*



Landscape Resource Survey  
**Dads' Gates Cloverleaf**

**LANDSCAPE AREA SITE MAP** — Highlighting existing elements from the period of significance.



Dads' Gates Cloverleaf

LEGEND			
TRASH CANS		BIKE RACKS	
NEWS STANDS		TREES FROM PERIOD OF SIGNIFICANCE	
SMALL SCALE FEATURES FROM PERIOD OF SIGNIFICANCE		MEMORIAL TREES AFTER PERIOD OF SIGNIFICANCE	
SMALL SCALE FEATURES AFTER PERIOD OF SIGNIFICANCE		CAMPUS TREES AFTER PERIOD OF SIGNIFICANCE	
PLAQUES AND MEMORIALS FROM PERIOD OF SIGNIFICANCE		UNIVERSITY STANDARD LIGHTPOSTS	
PLAQUES AND MEMORIALS AFTER PERIOD OF SIGNIFICANCE		NON-UNIVERSITY STANDARD LIGHTPOSTS	
BENCHES FROM PERIOD OF SIGNIFICANCE		LANDSCAPE AREA BOUNDARY	
BENCHES AFTER PERIOD OF SIGNIFICANCE			
MEMORIAL BENCHES AFTER PERIOD OF SIGNIFICANCE			

\* note: Period of Significance refers to the project period of 1876-1974



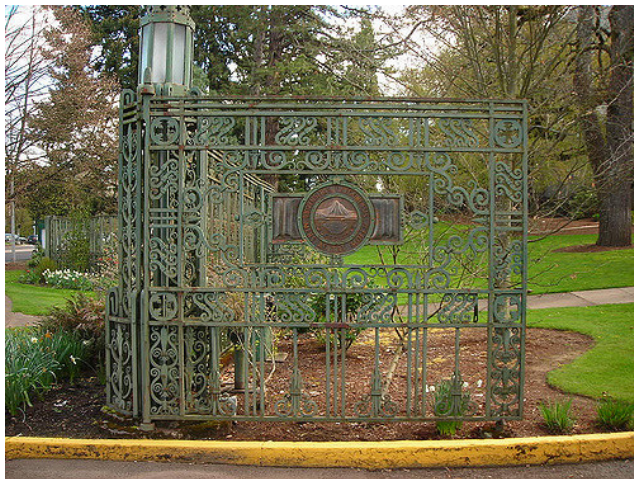
Landscape Resource Survey  
**Dads' Gates Cloverleaf**

**SUMMARY OF EXISTING HISTORIC FEATURES**

Ellis Lawrence proposed for the University formal connections to Eugene through celebrated entrance points. Dads' Gates and the Dads' Gates Cloverleaf are examples of these. Constructed in 1949 along with the Robinson Theater the Dads' Gates Cloverleaf acted as the beginning of a strong visual axis that connected Eugene to the heart of the University of Oregon. This axis was designed to be the primary entrance to the University from a proposed train station of the Southern Pacific Railroad that ran across the site. However, in 1943 the train was relocated to its current tracks across from Franklin Blvd.



2016 Aerial Photograph of Dads' Gates Cloverleaf



The Dads' Gates, built in 1940 of wrought iron by blacksmith



Photograph of Large Parking Lot



Photograph of Green Space and Semi-Circle Parking

**n RESOURCE HISTORY**

**ERA(S) OF GREATEST SIGNIFICANCE**

Designated Eras within the Period of Historic Significance Determined for this Survey are listed below. Check the era/eras determined to be of highest significance for this landscape area.

- Inception Era (1876-1913)
- Lawrence/Cuthbert Era (1914-1946)
- Mid-Century Era (1947-1974)

**DATE(S) OF CONSTRUCTION DURING ERA(S) OF SIGNIFICANCE**

- 1940: Dads' Gates are installed across 11th Ave.
- 1943: Southern Pacific Railroad starts running on its relocated tracks across Franklin Blvd.
- 1949: Cuthbert's design for the Dad's Gates "cloverleaf" is constructed.

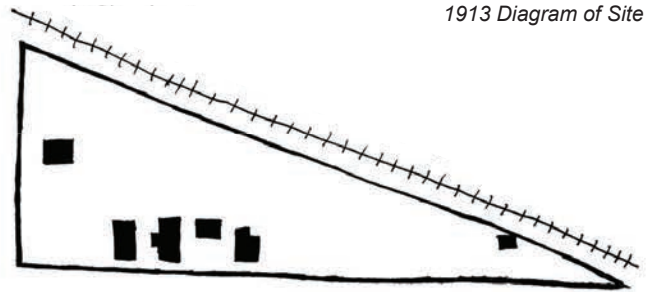
**MAJOR ALTERATIONS OCCURRING AFTER ERA(S) OF SIGNIFICANCE**

- 1990: Additional landscaping done to site.

**ERA DESCRIPTION:**

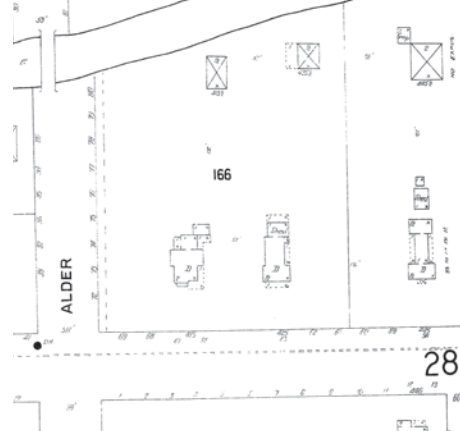
**The Inception Era (1879-1913)**

In 1913 this site is comprised of several small houses and buildings surrounded by empty undeveloped space. Where Franklin Blvd. now is at the north end of the site the Southern Pacific Railroad ran.



1913 Diagram of Site

1902 Map of 11th and Kincaid showing house plots on site



A 1921 image of Deady and Villard Hall showing the future site of the Dads' Gate Cloverleaf.



Landscape Resource Survey  
**Dads' Gates Cloverleaf**

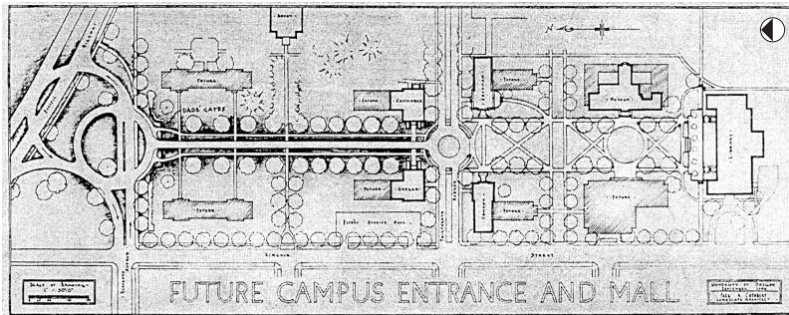
**ERA DESCRIPTION:**

**The Lawrence/Cuthbert Era (1914-1946)**

In 1946 the site was still comprised of several small houses and buildings surrounded by empty space. However, in 1940 the Dads' Gates were installed as the campus's formal entry off of 11th Ave. With this addition, Cuthbert designed the Dads' Gates Cloverleaf which lead to the relocation of the Southern Pacific Railroad.



1936 Aerial Photograph showing houses and railroad still on site.



Fred Cuthbert's  
1940 Plan for Dads'  
Gates Axis and  
Cloverleaf Entry

**ERA DESCRIPTION:**

**The Mid-Century Era (1947-1974)**

In this era the small houses and buildings were demolished and the Dads' Gates cloverleaf is officially constructed in 1949. This marked the entrance to the campus from 11th Ave. with a circular drive in front of the gate. On one side of this drive a large parking lot for the University was constructed and on the other-side a small green space.



1977 aerial photograph

**n DESCRIPTION OF LANDSCAPE CHARACTERISTICS**

**LAND USE**

*Describing both the historic and current use of the Area.*

Today the Dads Gates Cloverleaf and surrounding site are used for University of Oregon parking. The site also allows for vehicular traffic to cut through the site from Franklin Blvd to 11 th Ave. Pedestrians do not frequent the site unless walking to their cars parked in the parking lot.

**DESIGN INTENT**

*Describing the overall design intent of the Area.*

Fred Cuthbert designed the Cloverleaf as one of the formal entrances to campus. The site housed a train station allowing student access to the university via train. The curvilinear design was used as a termination of the long visual axis that started at the Knight Library. The design allowed people to pull over for easy drop off. Though the initial design was not fully realized the Dads Gates Cloverleaf still remains intact today.

**SPATIAL ORGANIZATION**

*Describing the arrangement of physical elements that create a three-dimensional sense of space.*

The Dads' Gates Cloverleaf is a triangular shaped space that is the termination of Lawrence's proposed Memorial Quad Axis. The space is comprised of three distinct functions, the first being two semi circles that create the Cloverleaf. The second being a small triangular green space full of trees and lawn. And the third being a large parking lot that takes up more than half the site.

**TOPOGRAPHY & SITE ORIENTATION**

*Describe/document gradient, slope orientation and solar access.*

This site is primarily flat. Solar access is slightly limited by the large amount of trees on the site with the northern portion of the site receiving the greatest concentration of direct sunlight. The parking lot along the western edge of the site also receives moderate sunlight due to the smaller concentration of trees.

**VEGETATION**

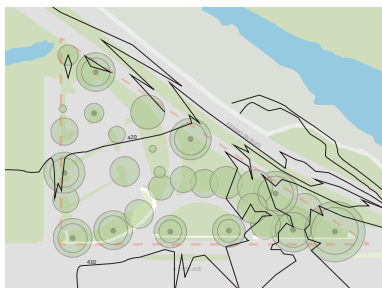
*Describing tree, plant, shrub, ground layer groupings and arrangements.*

After reviewing the site, it was noticed that the current ground cover consists of a limited material and plant palette list which may be indicative of the sites size. Fescues are planted throughout the vegetated areas which lay adjacent to the concrete and asphalt parking areas. Furthermore, there is a minimal amount of variation in canopy and shrub cover. Current trees on site entail Acer macrophyllum (Big leaf maple) , Fraxnius oxycarpa flame ( Flame ash) and Platanus occidentalis ( American plane tree) , Quercus palustris (Pin oak) and Liquidambar styraciflua (American sweetgum). Ornamental shrubs are composed of primarily Symphoricapos albus ( Oregon snowberry) , Ilex crenata convexa ( Japanese holly) which assist in framing the parking regions.

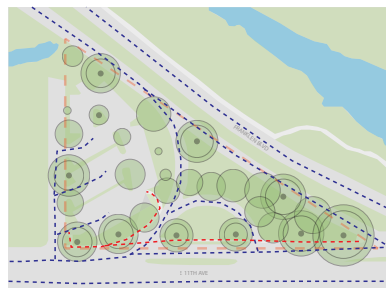
**NATURAL SYSTEMS AND FEATURES**

*Describing natural processes, water flow, and habitat, if applicable.*

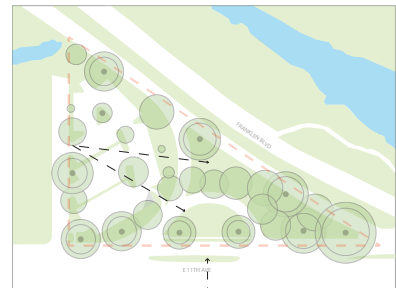
Describing natural processes, water flow, and



*The area's topography.*



*Diagram showing circulation paths.*



*Significant views through the area.*

Landscape Resource Survey  
**Dads' Gates Cloverleaf**

habitat are very minimal to not applicable. There is a elevation change of two feet and is distanced from the near by riparian area.

**BUILDINGS/STRUCTURES**

*Describing built physical elements in and around perimeter of the Area, and their relationship to the landscape.*

N/A

**SMALL-SCALE ELEMENTS**

*Describing elements such as monuments, markers, seating, fences etc.*

N/A

**EDGE CONDITIONS AND ADJACENCIES**

*Describing the perimeter of the site and important adjacent connections to spaces beyond.*

The edges of the Dads' Gates Cloverleaf are not formally defined by buildings or landscape features. Instead they are formed by the existing road network and a parking lot. There is an important connection to the Dads' Gates and Dads' Gates Axis.

**CIRCULATION**

*Describing movement paths and associated materials for: pedestrian; automobile; bicycle; other (e.g. system, alignment, materials, character).*

The Dads' Gates Cloverleaf occupies the void between where 11th and Franklin Blvd. come together. Pedestrian walkways are situated along the southern edge of the triangular site along E 11 th Ave. Vehicular traffic traveling east on Franklin Blvd can cross through the site via a one way curvilinear street that connects to E 11 th Ave. Traffic headed West on Franklin Blvd. can merge onto E 11 th Ave at the south eastern edge of the site. There is a loop along E 11 th Ave. that makes up the Cloverleaf allowing traffic traveling west on E 11 th Ave. to park along the Cloverleaf or drop people off before merging back onto E 11 th Ave. There is a parking lot along the western edge of the site with access from E 11 th Ave.

**VIEWS/VISTAS**

*Describing focal points and views to and from the Area.*

The main view is from the site across E 11 th Ave. down the Dads' Gates Axis towards the Lillis Business Complex.

## RELATIONSHIP TO TRAJECTORY OF LANDSCAPE ARCHITECTURAL HISTORY

*Discuss if/how the Landscape Area expresses historic landscape traditions, using examples of reference landscape(s) from those traditions, making sure to highlight both the similarities and differences between the Landscape Area and the reference landscape(s), and noting the influence of physical and cultural context for both landscapes.*



Dads gate clover leaf currently does not function as public space nor a garden. Its role within the existing urban fabric serves a medium which breaks the traditional rectilinear form of the urban grid. Its curvilinear oval shape speaks to a an era of modernity which facilitates the need of vehicular traffic. In reviewing the sites history, the figure grew out of demand to assist with the needs transportation. Roundabouts have been used throughout history in transportation as a method for allowing traffic to flow continuously. Columbus circle in New York, acts a green medium within the city. The space is bordered by oak trees , ornamental shrubs and seasonal flowers. Similar to Dad's gate clover leaf the shape punctures the urban fabric and allows for a harmonious current of traffic, both human and automobile. However, the space functions as a node within the city, attracting public and animal life. This may be a result to the monumental structures and water features which are contained within the space.



## n DETERMINATION OF SIGNIFICANCE

---

### CURRENT HISTORIC DESIGNATION

- City Landmark
- National Register - full listing  
name: Library & Memorial Quad
- National Register - partial listing  
name:
- National Historic Landmark
- No historic designation

### NATIONAL REGISTER CRITERIA

#### **Criterion A: Significant Events**

*Describe events with the landscape area that have influenced the broad patterns of campus history.*

Not Applicable

#### **Criterion B: Significant People**

*Describe connections with the lives of significant persons, including designers.*

The Dads' Gate Cloverleaf meets criterion B sense it was part of Ellis Lawrences design for the Memorial Axis and was designed by Fred Cuthbert. These two designers had a lot to do with the developement of the University of Oregon and to this day their original intentions for this school still influence its growth and expansion.

#### **Criterion C: Distinctive Characteristics**

*Describe elements that embody the distinctive characteristics of a type, period, or method of construction, or that represent the work of a master, or that possess high artistic values.*

Not Applicable

### LEVEL OF SIGNIFICANCE

Rank the landscape area in term of its level of contribution to the historic significance of the university campus as a whole.

- High Significance  
*Considerable contribution to the history of the campus and its growth.*
- Medium Significance  
*Noteworthy contribution the history of the campus and its growth.*
- Low Significance  
*Discernable contribution to the history of the campus and its growth.*
- Very Low/No Significance  
*No discernable importance to the history of the campus and its growth.*

**n DETERMINATION OF INTEGRITY**

*Integrity of the Landscape Area is evaluated based on the retention of the historic characteristics described in the categories below.*

**LOCATION / SETTING**

*Are important elements still in their original location and configuration?*

The important elements of this site are still in their original configuration and have not moved sense they where constructed in 1949.

**DESIGN**

*How has the general structure of the landscape changed since its period of significance?*

The general structure of the landscape has not changed sense its periods of segnificance. However there is a small man carved dirt trail that runs along the north side of the site bordering Franklin Blvd.

**MATERIALS**

*Are original materials/vegetation that were used to structure and shape the landscape still present?*

In evaluating historical maps and photos of the site it was seen that the Acer macrophyllum and the Platanus occidentalis have existed on the property for a extensive period of time dating back to the early 1940's as seen in historical photos In addition concrete and asphalt have been present of the site since the mid 1950's.

**WORKMANSHIP**

*Does the landscape retain characteristic workmanship from the period of significance?*

The Cloverleaf drive still remains today and is the only remaining piece of Ellis Lawrence's master entrance plan outside of Dads' Gates.

**FEELING**

*Does the landscape evoke the period of significance?*

In determining the overall feeling for the site it may be seen that it does not evoke nor portray the era of significance due to the limited and scarce amount of variety on the property. The current shape of the space can be argued as societies response to suit the needs of modernity. A curvilinear form which allows for continuous flow of automobile traffic. The materiality on site does not speak to specific era.

**ASSOCIATION**

*Is it possible to associate elements of the landscape with significant people/events?*

*The Dads' Gates Cloverleaf was designed by Ellis Lawrence and Cuthbert to be the start of the formal entrance to The University of Oregon.*

**n INTEGRITY & CONDITION FINDINGS**

**HISTORIC INTEGRITY**

*Determine the level of historic integrity, based on the Era(s) of Significance – check one*

- Excellent Integrity  
*Retains a very high percentage of original fabric, and the original design intent is apparent.*
- Good Integrity  
*Retains a significant percentage of original fabric, with a discernable design intent.*
- Fair Integrity  
*Original fabric is present, but diminished.*
- Poor Integrity  
*Contains little historic fabric, and the original design intent is difficult to discern.*

**OVERALL CONDITION OF LANDSCAPE AREA**

*– check one*

- Excellent
- Good
- Fair
- Poor

## n RESOURCES

---

— List all primary sources used (plans, maps, surveys, photographs, drawings, newspapers, periodicals, and autobiographies) and secondary sources (books, theses, guidebooks).

Aerial photograph of the University of Oregon, 1936. The University of Oregon Map Library, Aerial Photo Collection.

Aerial photograph of the University of Oregon, 1977. The University of Oregon Map Library, Aerial Photo Collection.

“Architectural Timelines 1940-1949 Architecture of the University of Oregon | UO Libraries.” Accessed June 02, 2016. <https://library.uoregon.edu/architecture/oregon/timeline-1940s.html>.

Cuthbert, Fred A. drawing for the “Future Campus Entrance,” 1940. Photograph of original kept in the University of Oregon Special Collections, University of Oregon Photo Collection, Box 3, Campus Plans folder

Shaw, William. “New York City History - Columbus Circle.” New York City Tourist. Accessed June 02, 2016. <http://www.nyctourist.com/history1.htm>.

“1902 Map of 11th and Kincaid.” Digital Sanborn Maps -- Splash Page. Accessed June 02, 2016. <http://sanborn.umi.com/image/view?state=or>.

“1921 Aerial View of UO Campus.” Oregon Digital. Accessed June 02, 2016. <https://oregondigital.org/catalog/oregondigital:df66nk88p>.

Survey research by Camden Santo, Connor Stephens, and Derek Rayle

Survey form completed in Spring 2016 under the supervision of Mark Eischeid