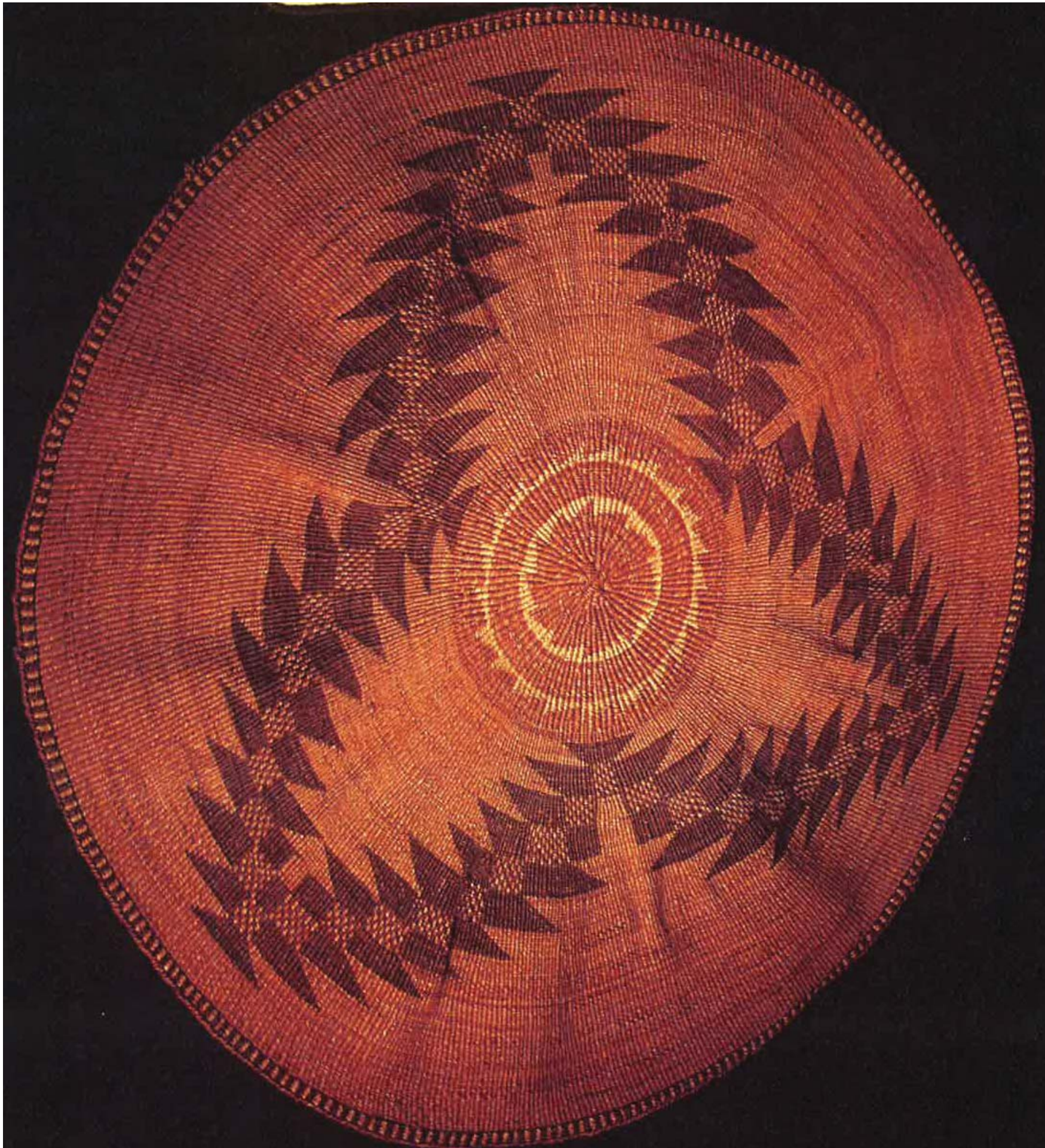


## CONCEPTUAL PLAN

Many Nations Longhouse Expansion, Expression Place & Many Nations Longhouse Axis



*prepared for*

**The University of Oregon**



**JONES**  **JONES**

ARCHITECTS  
LANDSCAPE ARCHITECTS  
PLANNERS

# TABLE OF CONTENTS

<b>A</b>	<b>PROJECT NARRATIVE</b>	<b>4</b>
	Many Nations Longhouse, Expression Place and MNL Axis Many Nations Longhouse Building Expansion Circle Concepts for the Expression Place and MNL Axis Expression Place Many Nations Longhouse Axis Native American Gateway Building and Site Program	
<b>B</b>	<b>PREFERRED LONGHOUSE EXPANSION</b>	<b>8</b>
	Longhouse Concept Plan Gathering Hall Perspective Isometric / East Entry Elevation Sections Through Gathering Hall / Entry and Conference Space	
<b>C</b>	<b>PREFERRED SITE PLAN</b>	<b>12</b>
	Site Concept Plan - Regions of Home Site Concept Plan - Expression Place Expression Place Perspective Expression Place - West-East Section Elevation Site Concept Plan - Regions of Home Honoring Circles Site Concept Plan - Native American Gateway	
<b>D</b>	<b>CONCEPTUAL COST BUDGETS</b>	<b>18</b>
<b>E</b>	<b>CAMPUS MAP</b>	<b>20</b>
<b>F</b>	<b>EAST CAMPUS AERIAL</b>	<b>21</b>
<b>G</b>	<b>EXISTING &amp; FUTURE CIRCULATION AND DEVELOPMENT</b>	<b>22</b>
<b>H</b>	<b>IMAGE REFERENCES</b>	<b>24</b>
	Regions - Language Tribes Plateau Coast Great Basin Interior Valley Structures East Architecture West Architecture East Culture West Culture	
<b>I</b>	<b>APPENDIX - LONGHOUSE PLAN OPTIONS A-D</b>	<b>34</b>
<b>J</b>	<b>APPENDIX - SITE PLAN OPTIONS 1-4</b>	<b>38</b>



Image: Neva Eggsman, Gordon Bettles and young tribal members, from The First Oregonians

# A PROJECT NARRATIVE

## CONCEPTUAL PLAN INTENT

The intent of this Conceptual Plan is to provide an initial design and program concept for the purposes of fundraising only. It does not represent an approved design. If these projects are funded and move forward they will proceed through the University of Oregon design process which includes the Campus Planning Committee review.

This Concept Plan has provided an opportunity to discuss several issues. There are site development limitations of parking, service and loading access because of the Many Nations Longhouse (MNL) siting within the designated Open-space Framework for the East Campus area. The process has resulted in pursuing the sharing of the Law School service area with MNL and sharing of the museum parking area with MNL. Additionally, the existing interior MNL gathering space faces heat gain and has become a growing issue for users of the facility. This has been addressed in the Conceptual Plan.

## MANY NATIONS LONGHOUSE, EXPRESSION PLACE AND MNL AXIS

The intent of the Many Nations Longhouse, Expression Place and MNL Axis is to provide a UO campus location where Native American culture is prominently and respectfully recognized. The UO encourages cross cultural interchange between all students. Through Native American student cultural activities, celebrations, and ceremonies many opportunities present themselves for cross cultural interchange. The expansion of the Many Nations Longhouse, the development of the outdoor Expression Place, and the MNL Axis will further support the Native American students and their cross cultural activities. Intentional design relationships of cardinal directions, arbors, seating, pause spaces, patterns and the messages of Honoring along the MNL Axis will expose all students, faculty and staff to the living Native American cultural traditions of the State of Oregon. Additionally, Oregon's nine recognized tribal cultures can use the three areas as opportunities for cultural interchange and cultural understanding.

The MNL Axis and Expression Place are a part of the overall designated Open-space Framework of the East Campus Open Space. The MNL Axis and Expression Place will provide landscape structure to the east campus existing and future development and will connect to the larger campus open space framework. The developed MNL Axis and Expression Place will provide unique beauty and meaning to the open outdoor green space of the UO East Campus.

With the development of the Expression Place, there will be the opportunity to create a new terminus of Columbia Street and it will provide a vehicle drop off area for events the Longhouse.

Displaced campus parking spaces will be required to be replaced per the Campus Plan.

## MANY NATIONS LONGHOUSE BUILDING EXPANSION

The Many Nations Longhouse is an existing central cross cultural place on the UO campus. Its main purpose has always been as a Native American Cultural "home" on the UO campus. From the day it was occupied in 2004 it has been heavily used by the Native community and other cultural groups from the UO campus. It is a campus space in great demand by students, staff, and faculty. It is presently too small to handle the demand. During the workshop sessions, a few key design issues were identified; not enough large open community space, not enough toilets, too small a kitchen and no space for student support groups.

For many years now it has become important to find a way to expand the existing longhouse because of its heavy campus use. The need for a better "home" for the expanding UO campus-wide Native American students, faculty, staff and visiting Oregon State Tribes is a priority! The new plan for the Longhouse accommodates all of the requested and proposed programs and uses, such as Native American student organizations (currently at another campus location), bigger gathering space, bigger kitchen, more toilets, more storage and men/women dressing areas for Native American regalia preparation. These programs and uses require an additional 4,700 sf to be added to the existing Longhouse of 2,904 sf, for a new total of 7,604 sf. The main areas of expansion would extend to the east and north of the existing Longhouse.



Image: Columbia Basin Women

The key program areas that contribute to the larger Many Nations Longhouse are as follows:

1. Gathering Hall Expansion will now accommodate 280 to 300 people; with 2-level traditional terrace seating on 3 sides (hidden storage under the terrace seating); a floor recessed fire/smoke ring.
2. New Student Center area to accommodate the four UO Native American organizations in 2 office spaces; new student study area with computer stations; a student lounge area; a small kitchenette; and outside access door.
3. New conference space area.
4. New MNL Steward and staff offices for better management of the Longhouse; space for printer/copier and office storage.
5. New children's area.
6. New regalia dressing rooms with showers.
7. Expanded toilets for both men and women.
8. New "special storage" (lockable) for drums, etc.
9. New cultural display case.
10. Expanded kitchen and storage.
11. New outdoor storage.
12. New attic HVAC equipment space.
13. New weather protection/ roof areas at both the east and west entry areas.
14. New solar controls overhangs at the existing south large window.
15. The north existing ceremonial door would remain!

The NW Coastal Longhouse architecture will be continued with the new expansion; large wood columns and beams, wood dance floor in the Gathering Hall; and the use of wood as the main interior finish. The existing exterior side would be replaced with more traditional wood siding in size and scale. The "living roof" would be continued and improved on both the existing and new roof.

Additionally, storage of wood on the west terrace will be screened by a new site wall.

Refer to the selected "Preferred Plan" for more detail.



## CIRCLE CONCEPTS FOR THE EXPRESSION PLACE AND MNL AXIS

To create an outdoor “Indigenous place” for the UO Native American community it will need to be a place that respects the circular nature of their lives. The circle connects all State of Oregon Native People across their “indigenous diversity.”

- The circle is connected to their Indigenous ways and beliefs.
- The circle represents the circular process of their life.
- The circle connects them to the organic nature of life.
- The circle allows for the connection with the four worlds, Natural, Animal, Spirit and Human worlds, it’s much better that a “straight line.”
- The circle encourages welcoming and honoring of each other.
- The circle is recognizable by all Native People of North America.
- The circle allows us to connect to something larger than just ourselves.

An Indigenous place would not be an American Indian place without the circle. The circle is not symbolic but rather a strong direct connection to a way of life that connects us all together.

### EXPRESSION PLACE

The Expression Place is a part of the overall campus Open-space Framework Plan and will maintain the primary pathway connections to the greater campus.

The Expression Place will function as a seasonal outdoor gathering space for UO Native American events, ceremonies and celebrations. It will provide a cross cultural Native American outdoor place on the campus; non-existent at the present. The eastern area of the Expression Place will include an Honoring Place for the State of Oregon nine recognized tribes. An upper semi circular wall located at the east end of the Expression Place will recognize and honor the nine Affiliated Tribes of Oregon.

By accentuating the slope that exists within the East Campus site, the Expression Place forms a semi circle of terraced seating around the outdoor Gathering Circle. Modular pavers will form a basket pattern in the dance circle. A central fire area punctuates the circle. A broad upper terrace provides an elevated view of activities and accommodates spectators using folding chairs. Stairs on the east of the dance circle and perimeter paths of the Expression Place are the access to the upper terrace. Two framework arbors encircle the Gathering Area and define the N, S, W, E entries. The arbors offer some shade and protection from the elements for visitors to this Native American gathering circle place.

The western axis of the gathering circle marks the main East Entry of the existing and future expanded Many Nations Longhouse. Seasonal solstice lines, inscribed in the paving, radiate out from the central fire circle. The entries into the Expression Place are on the Cardinal directions. Wetland and riparian plants on the north and south flank the entry to the gathering circle and a bridge provides access from both directions. The riparian areas provide storage for storm water from both the Many Nations Longhouse and Gathering Circle runoff. The riparian garden was seen as an asset to the entry experience and replaces the existing stormwater storage wetland at the end of Columbia Street.

## MANY NATIONS LONGHOUSE AXIS

The MNL Axis extends directly east from the Longhouse towards Moss Street. As a primary path it supports and maintains pathway connections to the greater campus. The MNL Axis will provide a clear, well defined pedestrian circulation route for the east campus area and a view corridor to the east from the Many Nations Longhouse. The axis is 60 feet wide from the east side of the existing Many Nations Longhouse to Moss Street at the east end.

Embracing stone walls punctuate four Honoring Circles along the approximately 380 feet of axis. Modular pavers define Northwest Native American patterns in the walking surface. The Honoring Circles provide places for honoring the 54 Bands and Tribes that have a tradition of land use within the State of Oregon boundaries. Sheltering native trees and understory plants enclose the Honoring Circles from the existing residence hall to the north and future buildings to the south. Intermediate spaces between the Honoring Circles allow for pedestrian or utility path connections for future campus development on the south.

The Many Nations Longhouse Axis is a part of the overall designated campus framework plan. It is a shared connector to the East Campus Area and is a primary pedestrian route.

The concept of “Regions of Home” design met with affirmative responses from the MNL Committee and Advisory Groups. The “Regions of Home” concept relates to the interpretive message structure that the Museum of Natural and Cultural History has portrayed in their exhibits of Native Americans of Oregon. The four circle design in the “Regions of Home” Option defines the nine Tribes and the 54 Bands of Oregon by their association to the diverse landscapes of Oregon, including the Plateau, Valley, Great Basin and Coast. Plateau is the most easterly Honoring Circle and the Coast is the most westerly Honoring Circle. There would be an honoring place for the Kalapuyas since this area was their homeland and for other honoring that might surface in the future.

The potential for a distinctive design of these areas was seen as contributing positive facilities for both the Native American and general University communities.

## NATIVE AMERICAN GATEWAY

The Native American Gateway is located mid block on Moss Street, which runs north-south, at the east extent of the MNL Axis. It is within the University’s designated open space plan and relates to the east campus gates at the Museum of Natural and Cultural History. The Gateway marks the shared primary circulation route and creates an honoring place for Indigenous Peoples of the world, and possibly tribes outside the State of Oregon. The design of the gateway will reflect the arbors and stones walls elsewhere on the MNL Axis and Expression Place.

## BUILDING PROGRAM

space type	program area	area (sqft) ±	no. of occupants	notes
Community Gathering	Welcome Entry	324		cultural display; Coos sculpture
	Assembly/Gathering Hall Addition ex sf1812 tt1 sf 2948	1136	280-300	traditional terrace seating at perimeter
	Assembly service (table & chair storage)	210		rolling carts; cots; canopy tents
	Kitchen/ Kitchen storage Addition	389		commercial stove; stack oven; steamer; catering refrigerator; commercial dishwasher; under counter drawers and expanded work space at stove; door; storage pantry
	Large Conference Room	420	26 ±	modular table, storage cabinet, audio-visual equipment
	Dressing Room/Showers (Men/Women)	136	1/1	
Student Life	Study/Resource Room/Lounge	720		8 computer workstations, small group work area; kitchenette? restroom access; outside access
	Offices (2)	280	4	
	Cultural Storage	100		drums
	Family/Children's Space	140		baby care and children's private space
Office & Support	Steward's Office	121	1	
	Private Office	110	2	
	Office Service (copy, print, fax)	20		copy/print/fax/office supplies
Other	Toilets (Men/Women)	290	3/2	sound proof
	Living Roof	4700 ±		
	Outdoor cooking equipment storage	80		lockable storage; fry bread makers/propane; BBQ
	HVAC Upgrade	1580		Entire building mechanical system

## SITE PROGRAM

space type	site program area	area (sqft) ±	no. of occupants	notes
Expression Place	Large Gathering Area	49,100	(150)	Dance circle & terraced seating; arbors; entry walks @ cardinal directions; Nine Tribes Honor Wall & honor message; ceremonial fire area; Native American pattern paving; talking stones
	Traditional Use Plants Area	4,350		Kalapuya/English identification & uses; important plants -cedar, rose, cattails, tules, woca
	Bridge Entry to Longhouse	330 ±		
	Wetland Garden	1,200		
	Lawn	2,000		
MNL Axis & Native American Gateway	Honoring Circles	245 LF		Recognize 50 Tribes/Bands; Native American pattern paving; stone Honor Walls ;interpretive/ honoring messages;
	Native American Gateway			Moss Street - Arbor, pattern paving, Honor Walls; interpretive honoring messages
	Tree/Shrub Garden Buffer @ South & North MNL Axis	8100 ±		soften building edge to pedestrian walkway w/ native plants; screening must work for both ECRH and future southern development
Other	Drop Off	2 cars		
	Bike Parking	6 ±		
	Mail box			
	Elder and HC Parking	6-10		dedicated spaces; shared spaces w/ Museum
	Ex. Wetland Bioswale			relocate
	Service parking space			Out of designated Open-space; adjacent to building



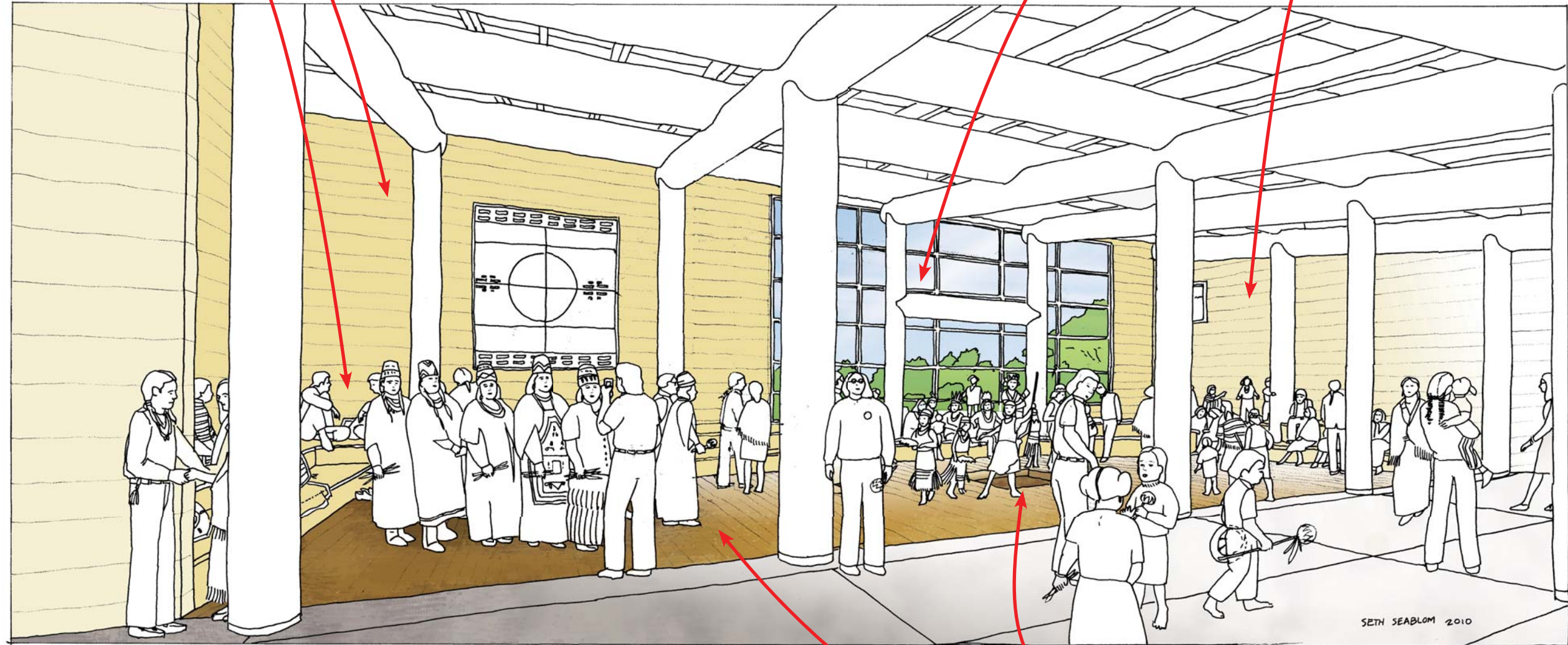


WOOD DISPLAY WALL

NEW TWO LEVEL SEATING WITH STORAGE BELOW

EXISTING SOUTH WINDOW W/ NEW SOLAR CONTROLS ON EXTERIOR

NEW WOOD DISPLAY WALL

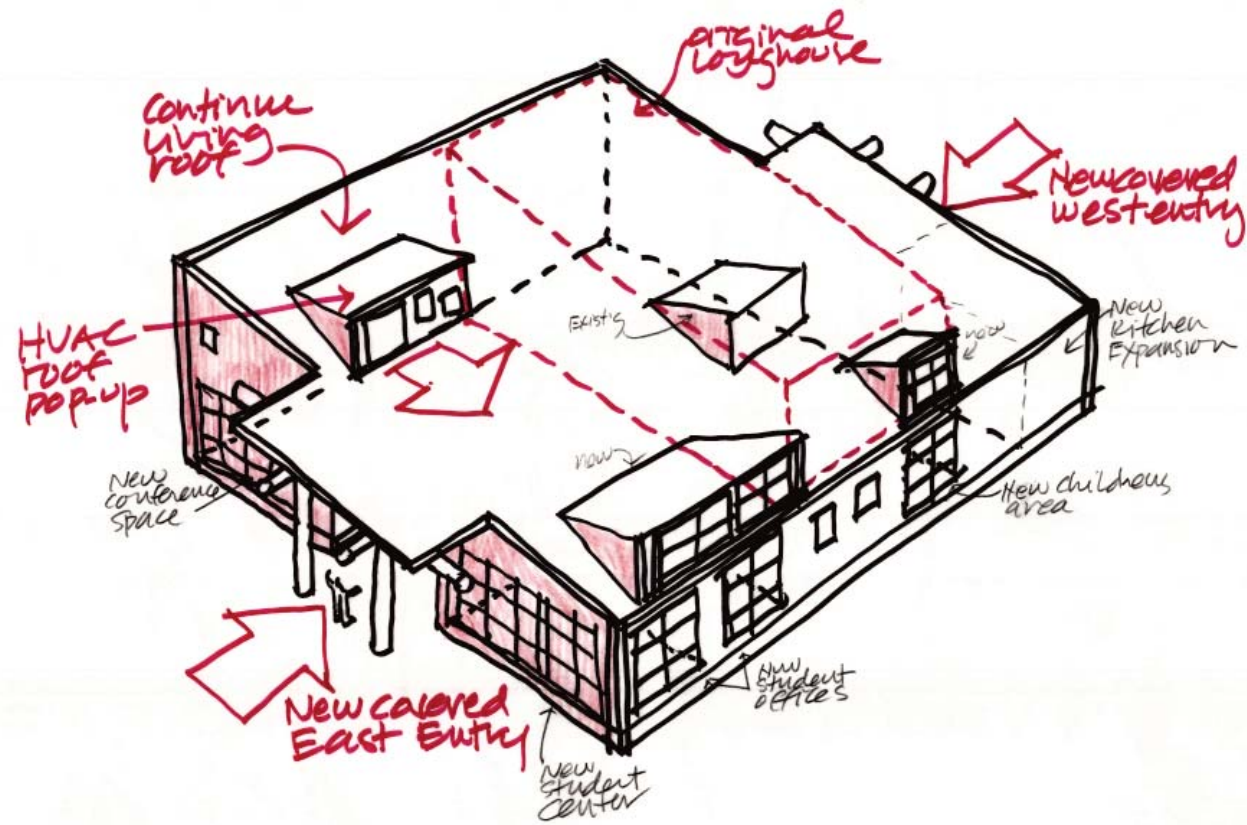


NEW RECESSED FLOOR FIRE/SMOKE RING

CONTINUE WOOD DANCE FLOOR

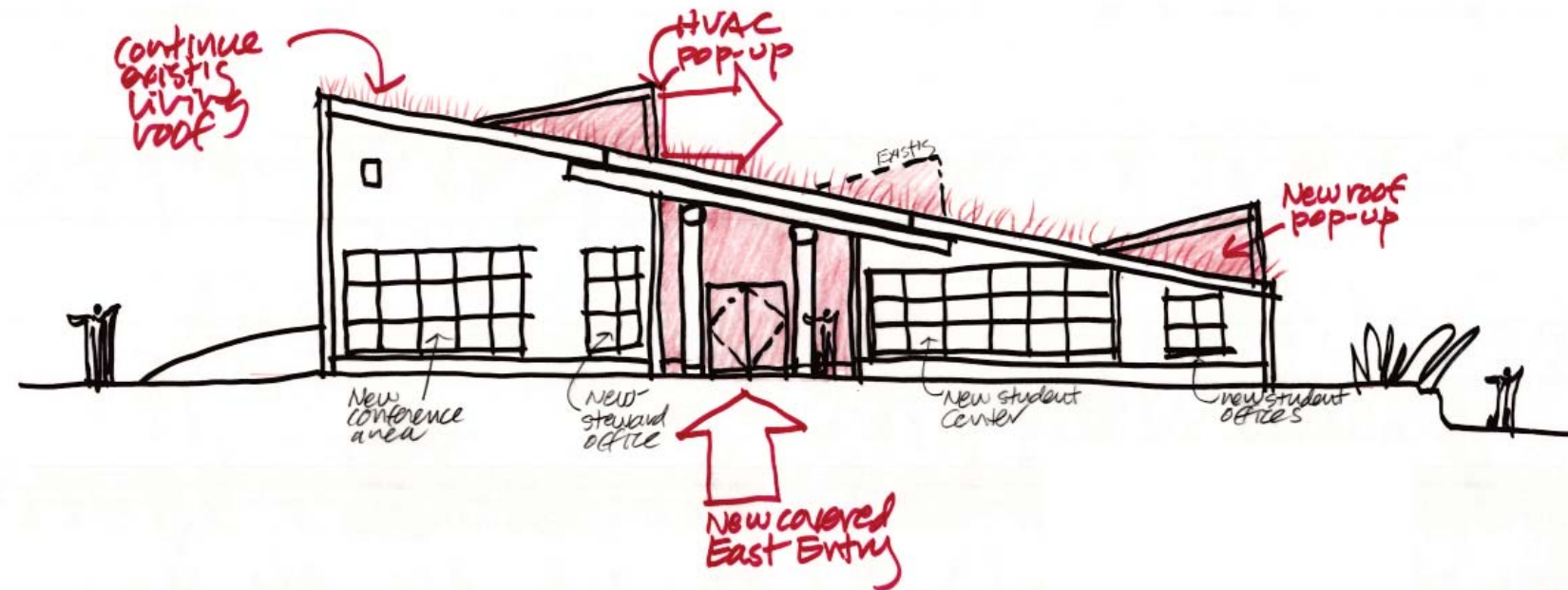
# GATHERING HALL PERSPECTIVE

SCALE: NTS



## ISOMETRIC

SCALE NTS

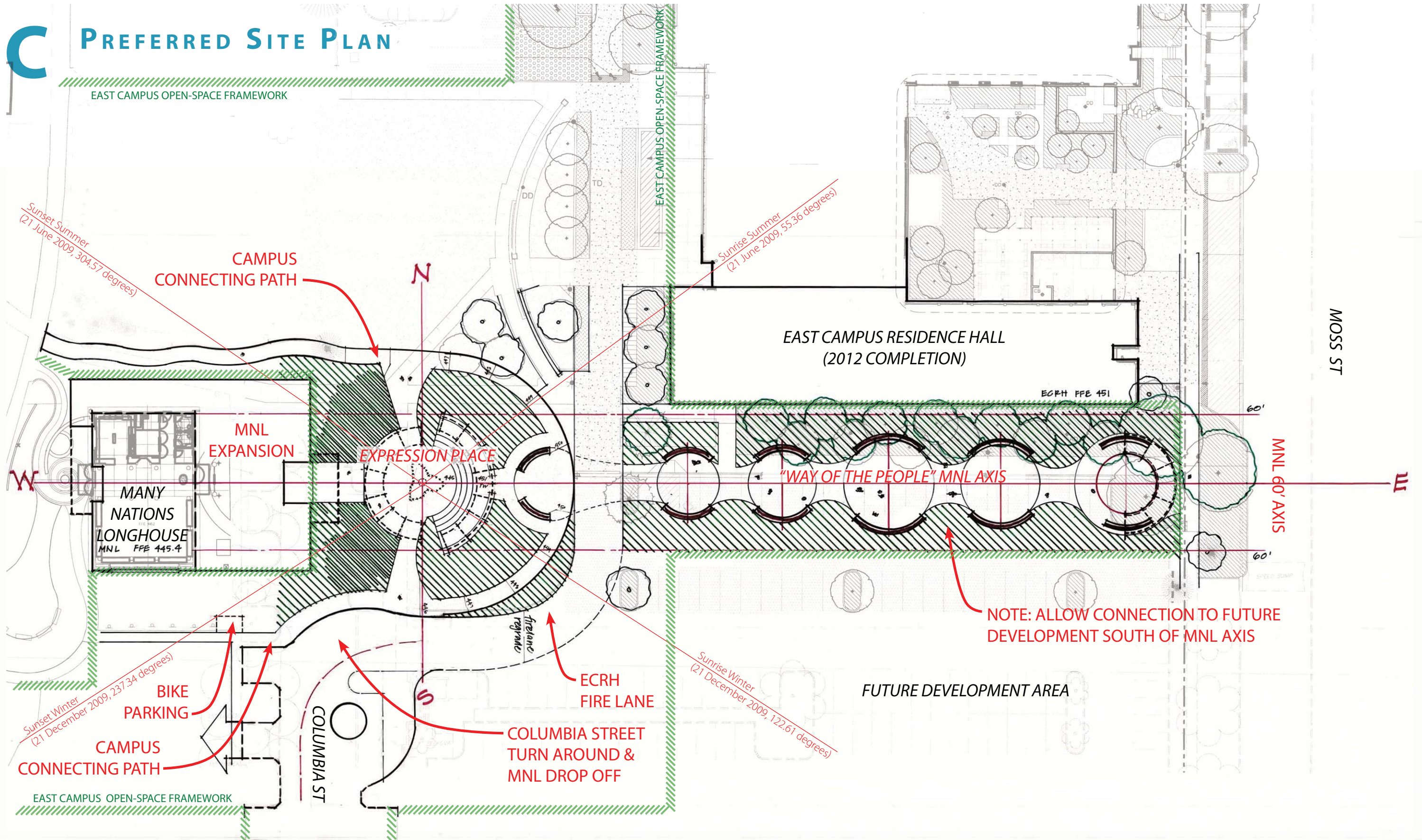


## EAST ENTRY ELEVATION

SCALE 1/16"=1'-0"

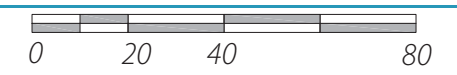


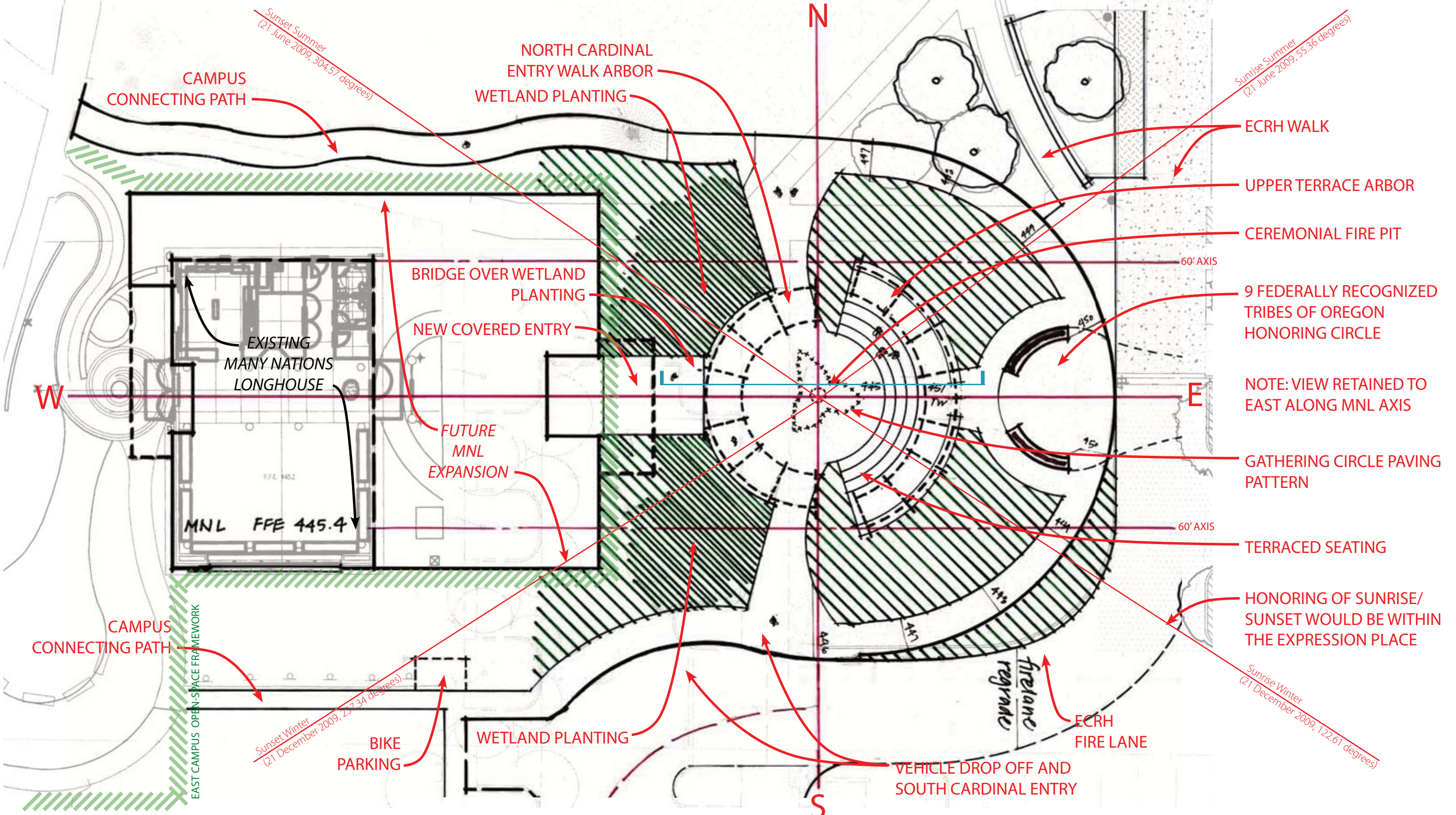
# C PREFERRED SITE PLAN



## SITE CONCEPT PLAN - REGIONS OF HOME

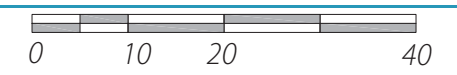
SCALE 1"=40'-0"

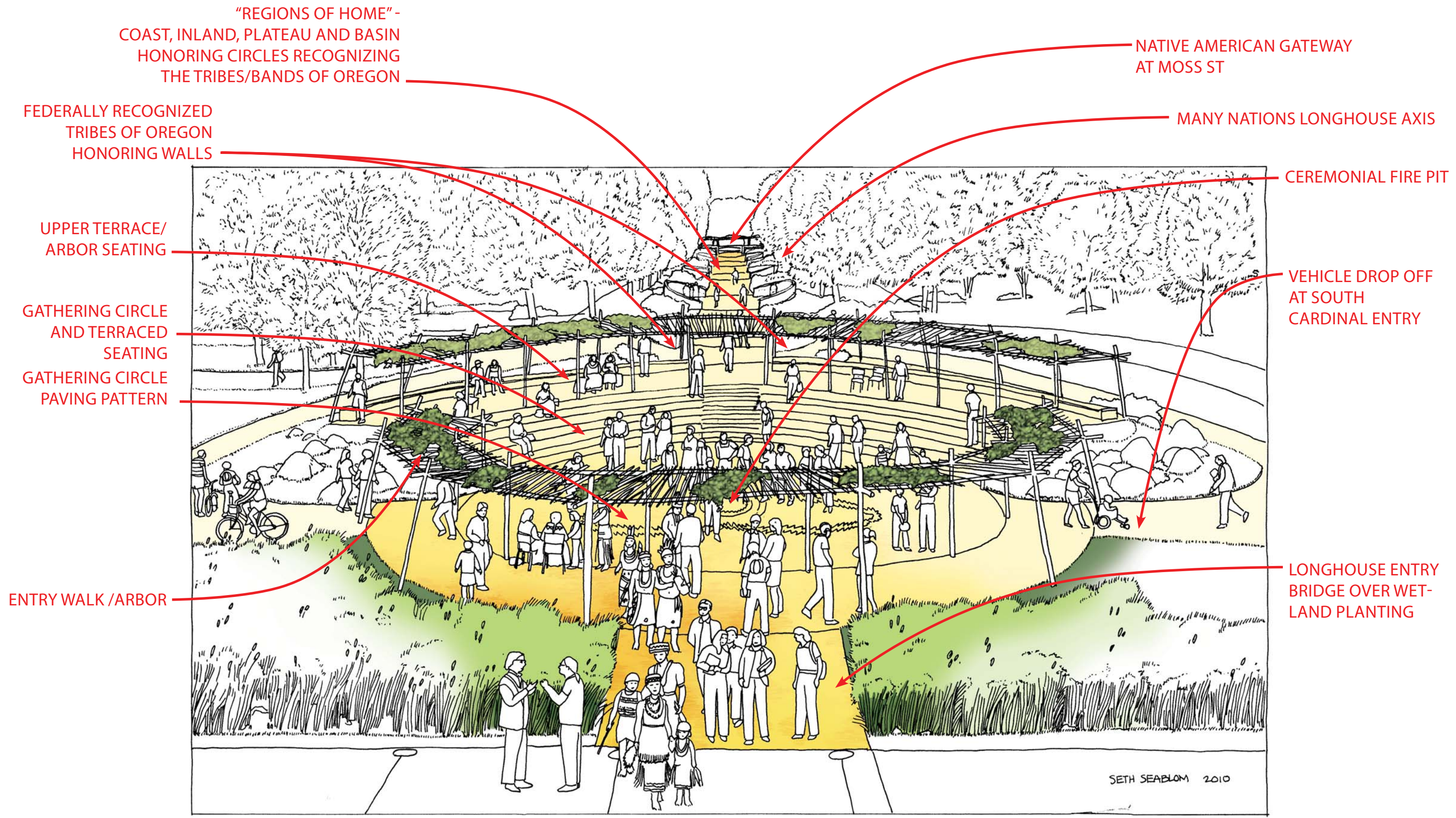




# SITE CONCEPT PLAN - EXPRESSION PLACE

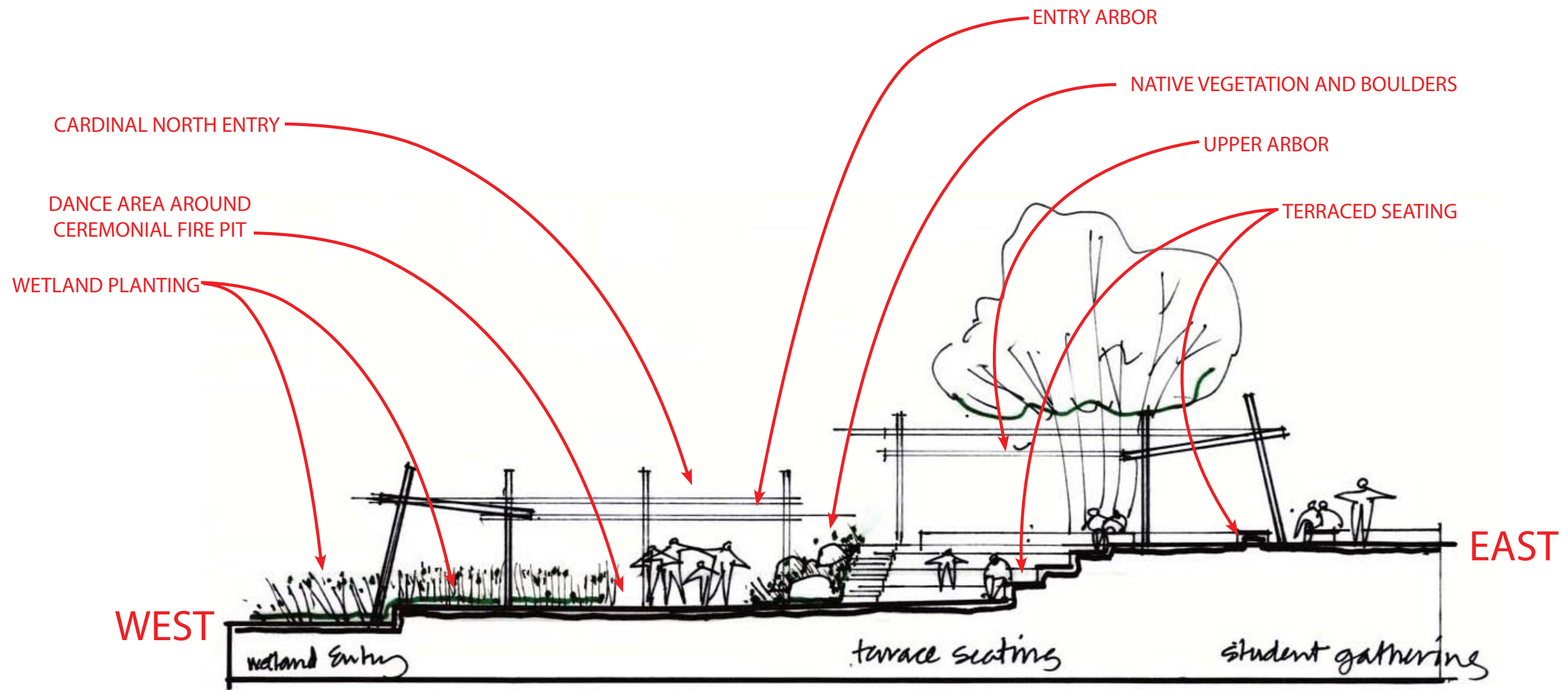
SCALE 1"=20'-0"



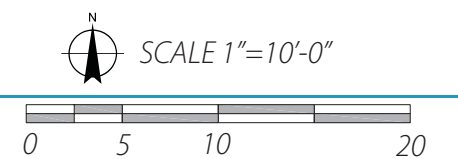


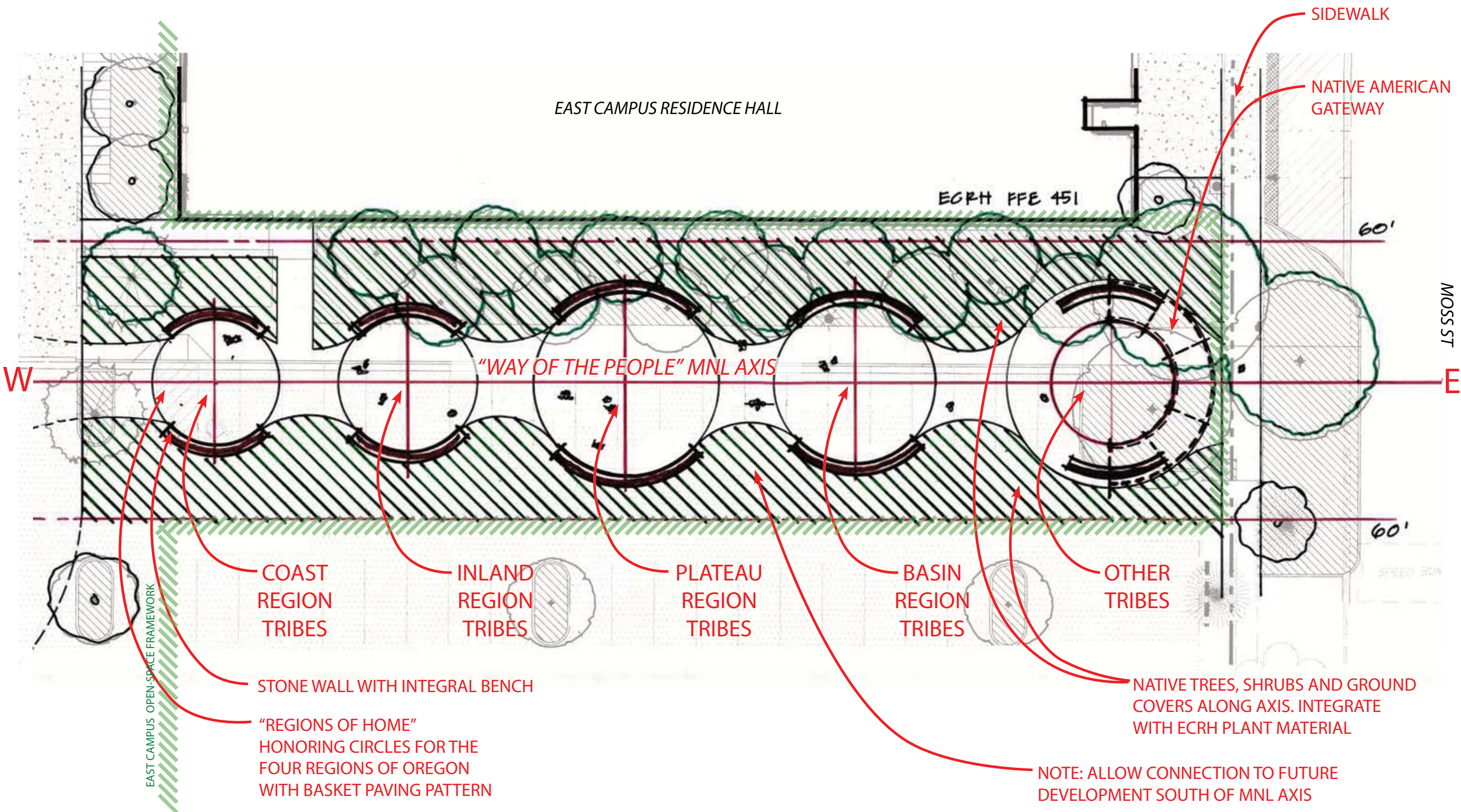
## EXPRESSION PLACE PERSPECTIVE

SCALE: NTS



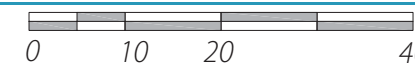
**EXPRESSION PLACE - WEST-EAST SECTION ELEVATION**



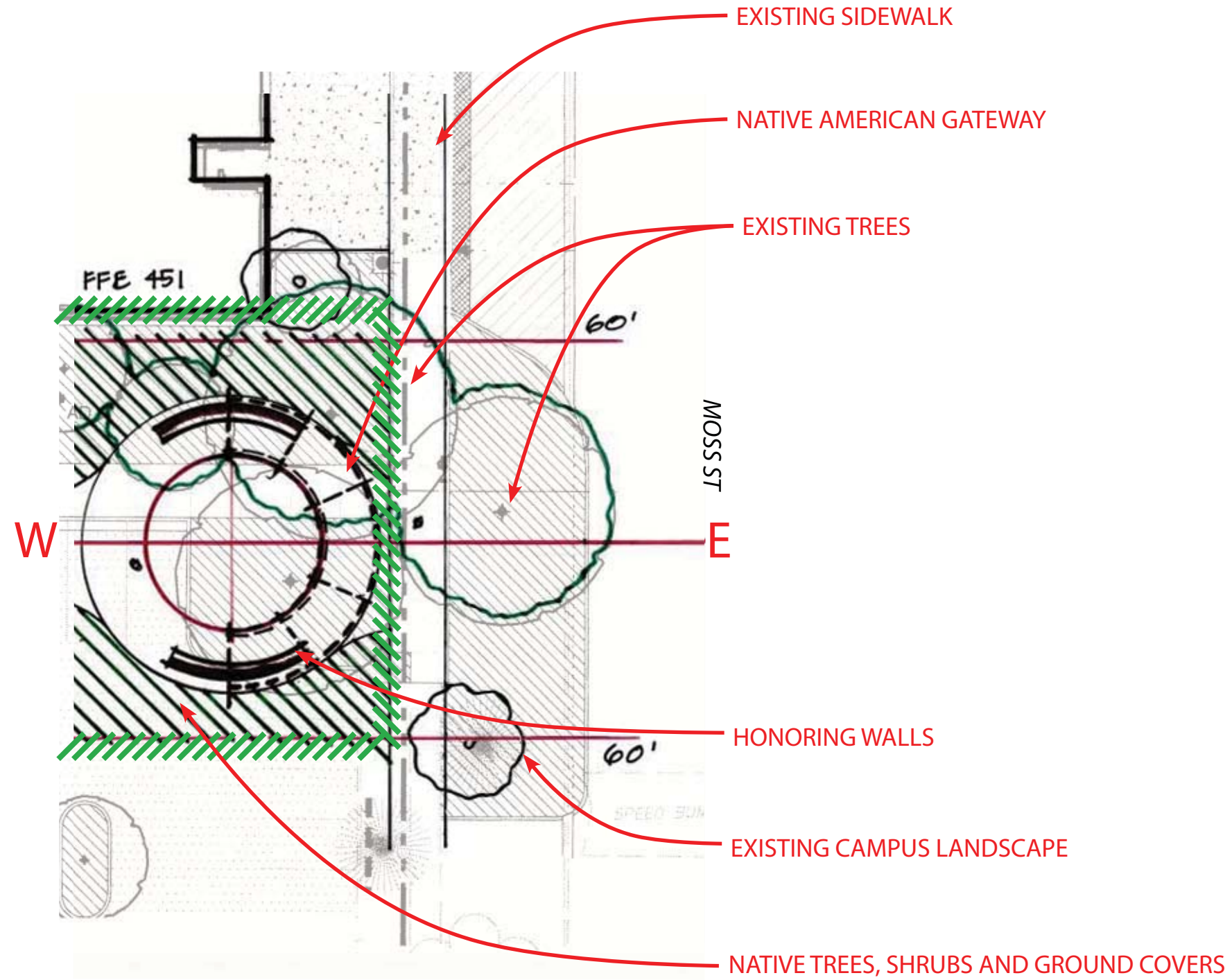


## SITE CONCEPT PLAN - REGIONS OF HOME HONORING CIRCLES

SCALE 1"=20'-0"

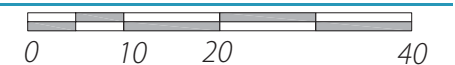




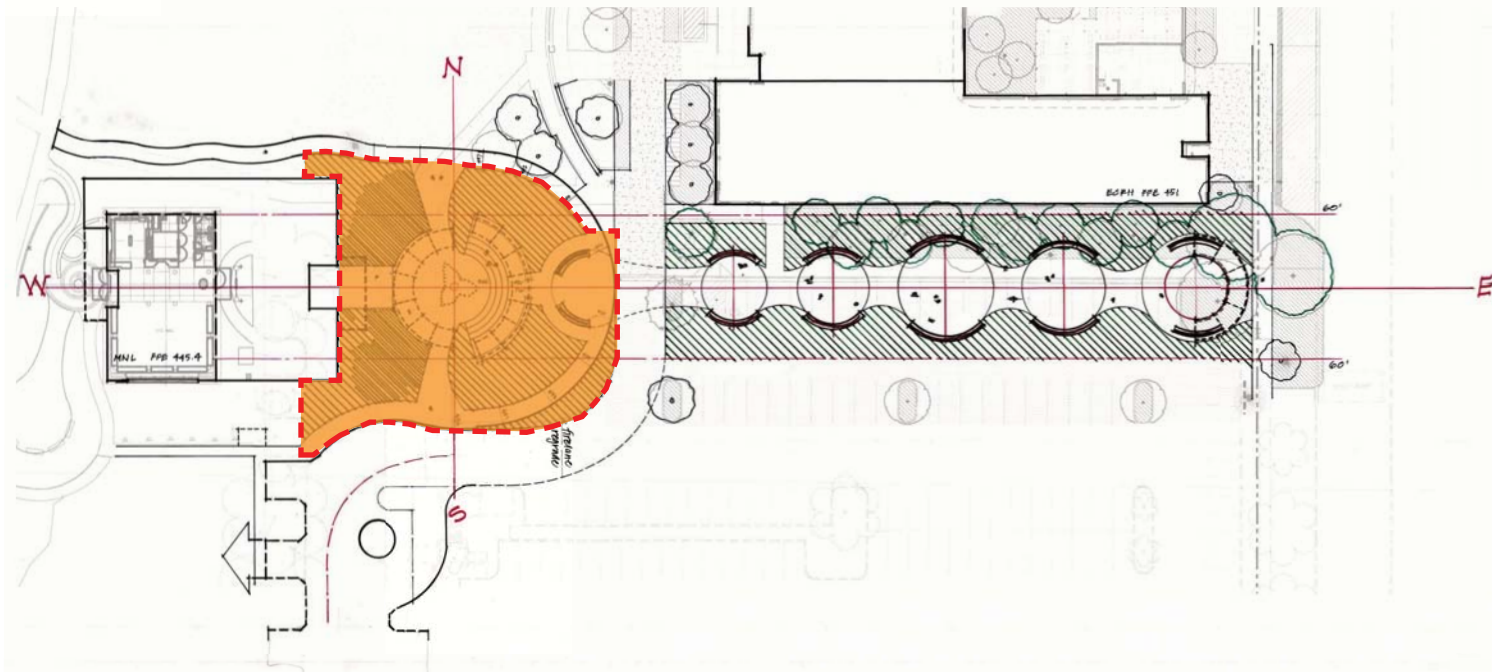


# SITE CONCEPT PLAN - NATIVE AMERICAN GATEWAY

SCALE 1"=20'-0"



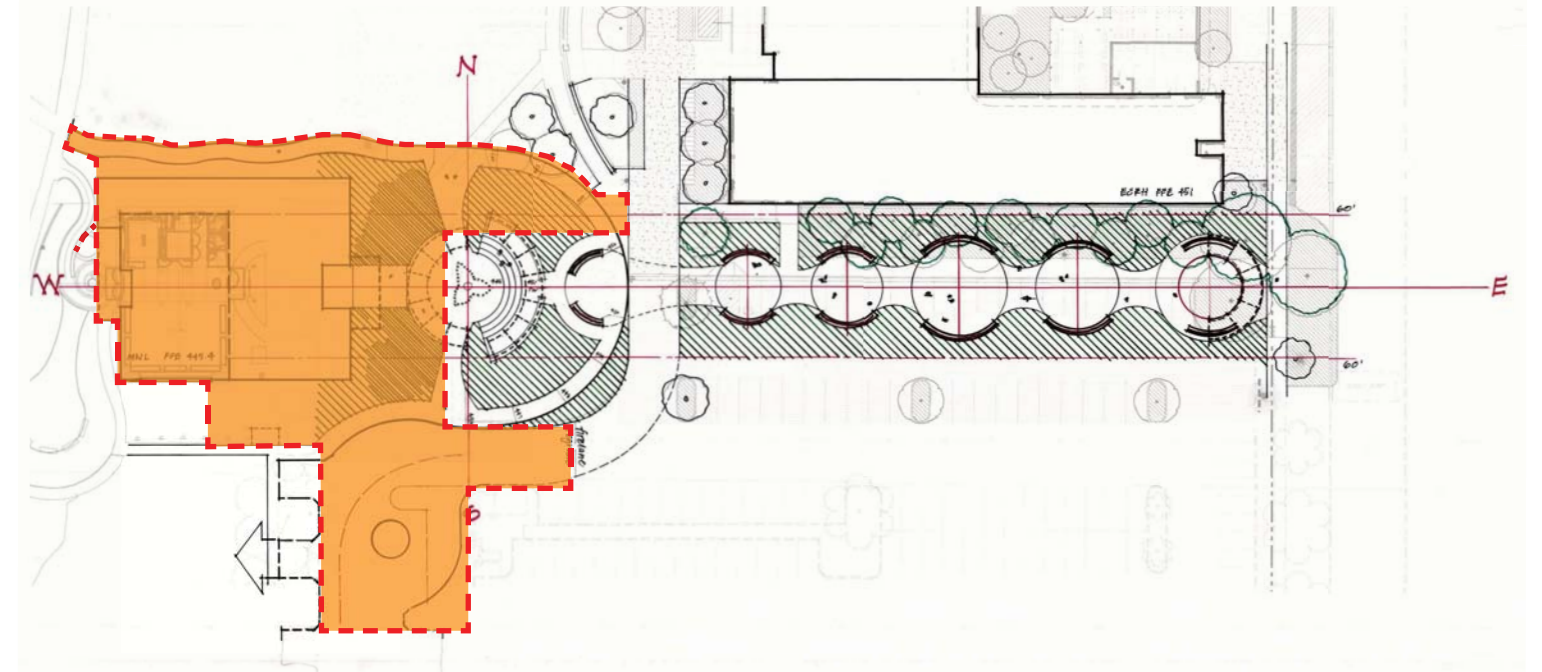
# D CONCEPTUAL COST BUDGETS



## EXPRESSION PLACE

1. Misc. site work—demo, earthwork, utilities, fire, lighting	=		=	\$	55,000
2. Patterned paving and walkway paving	=	1566 sf x \$20	=	\$	31,320
3. Entry Bridge	=	352 sf x \$50	=	\$	17,600
4. Terrace seating—concrete + wood seat	=	1022 sf x \$25	=	\$	35,550
5. Arbors/lighting	=	700 sf x \$200	=	\$	140,000
6. Landscape— wetland / upland planting, irrigation, soil	=		=	\$	100,000
7. Honoring Wall construction—Stone clad/CMU core	=	360sf x \$100	=	\$	36,000
8. Wall Graphics for 9 Recognized Tribes	=		=	\$	50,000
		Subtotal	=	\$	465,470
9. Contingency @ 10%	=		=	\$	46,547
		Subtotal	=	\$	512,017
10. CPRE Cost @ 35%	=		=	\$	179,205
		Total	=	\$	691,222

Notes: \*Four to five (4-5) spaces removed @ Turnaround—Not Included in Estimate



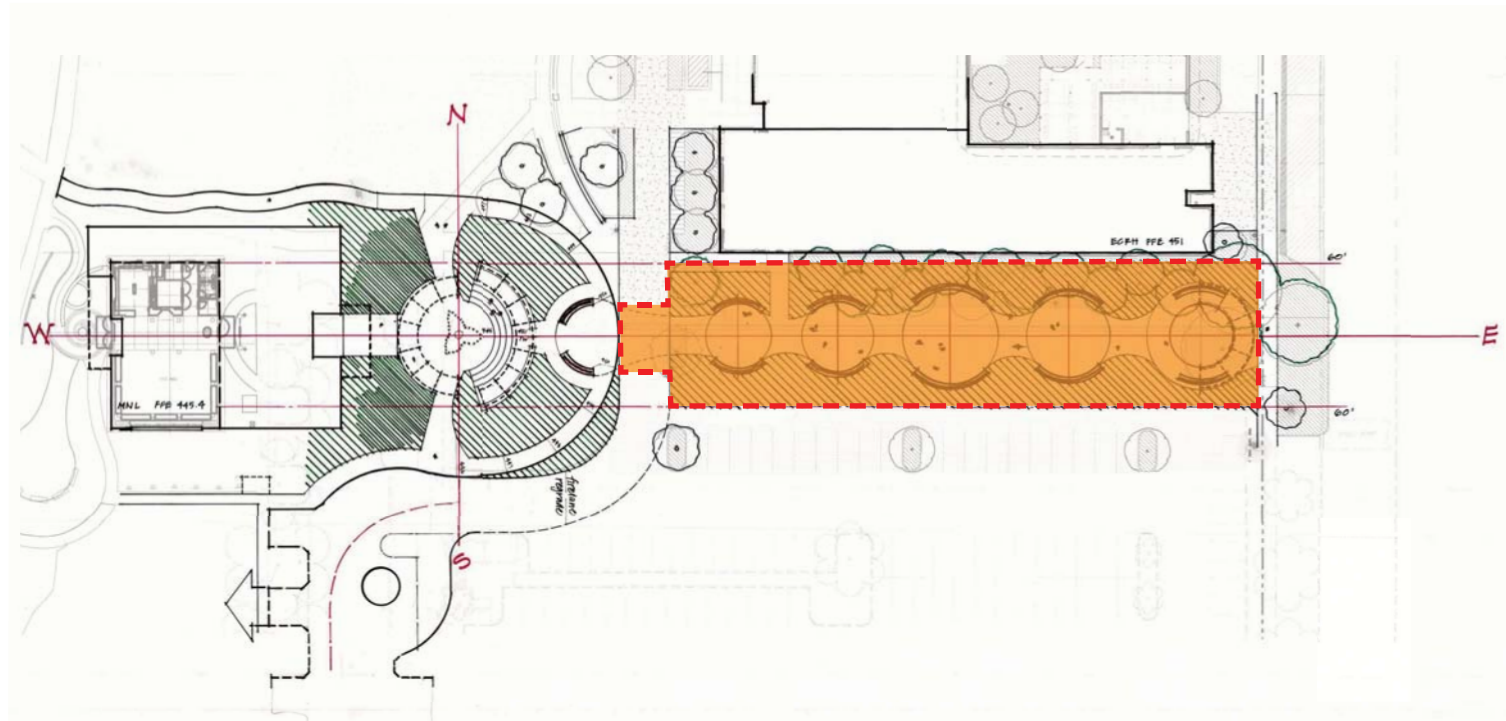
## MNL REMODEL AND EXPANSION

1. Existing MNL Remodel (Kitchen Equipment Included)	=	2,904 sf x \$150/sf	=	\$	435,600
2. New Additions	=	4,700 sf x \$300/sf	=	\$	1,410,000
3. New upper level HVAC area and storage areas	=	1,580 sf x \$80/sf	=	\$	126,400
		Subtotal	=	\$	1,972,000
4. Contingency @ 10%	=		=	\$	197,200
		Subtotal	=	\$	1,826,800
5. CPRE Cost @ 35%	=		=	\$	639,380
		Total	=	\$	2,466,180

## SITE WORK

1. Demolition	LS	=	\$	40,000	
—walks, street end parking, access ramp					
2. Misc. site work		=	\$	50,000	
—earthwork, utilities, lighting, bike racks, site wall					
3. New parking access ramp, turnaround, walkways, storm drainage		=	\$	80,000	
4. Landscape—soil, planting, irrigation		=	\$	100,000	
		Subtotal	=	\$	270,000
5. Contingency @ 10%		=	\$	27,000	
		Subtotal	=	\$	297,000
6. CPRE Cost @ 35%		=	\$	103,950	
		Total	=	\$	400,950

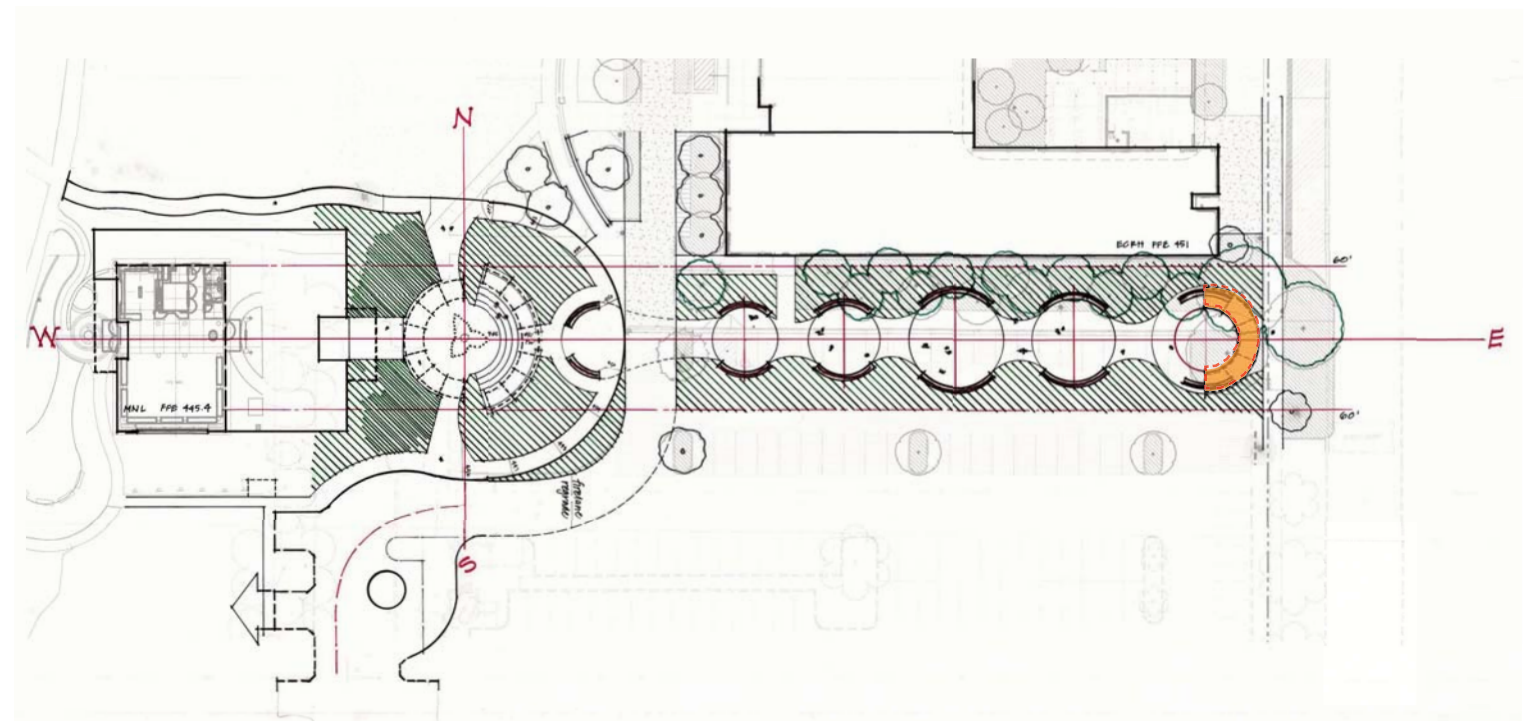
Notes:\* Eight (8) parking spaces removed at Longhouse Not Included in Estimate  
Four to five (4-5) spaces removed at turnaround Not Included in Estimate



## MNL Axis

1. Misc. site work—demo parking and sidewalk, earthwork, TESC, tree protection, lighting	=		=	\$ 35,000
2. Main Walk—patterned paving and walkway paving supports vehicles	=	5000 sf x \$20	=	\$ 100,000
3. Honor Walls construction— stone clad, CMU one side	=	1100 sf x \$100	=	\$ 110,000
4. Landscape – planting, irrigation, soil	=		=	\$ 60,000
5. Wall Graphics Material	=		=	\$ 85,000
		Subtotal	=	\$ 390,000
6. Contingency @ 10%	=		=	\$ 39,000
		Subtotal	=	\$ 429,000
7. CPRE Cost @ 35%	=		=	\$ 150,150
		Total	=	\$ 579,150

Note: \*26 parking spaces removed, includes 2 HC - Included in Estimate

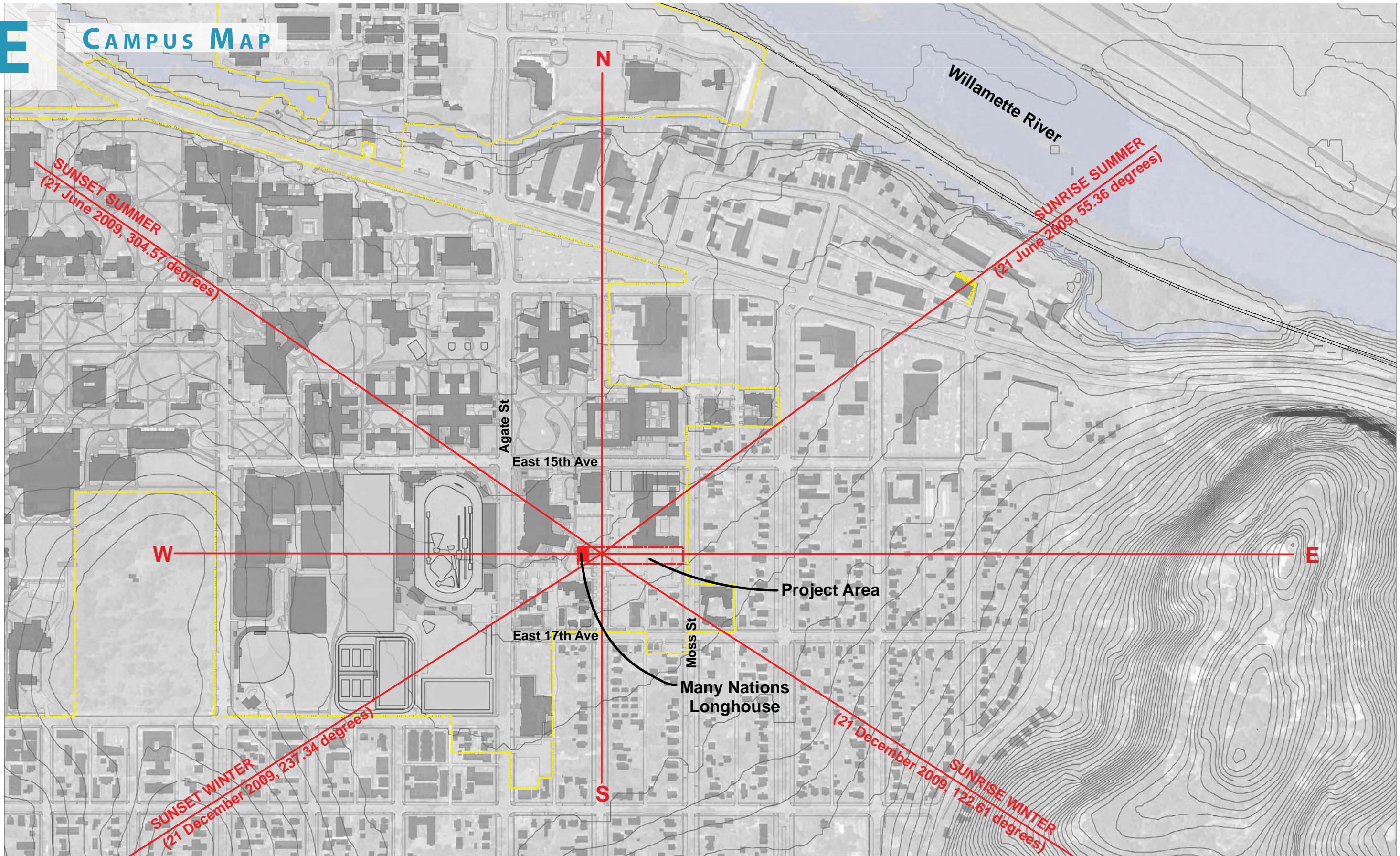


## NATIVE AMERICAN GATEWAY

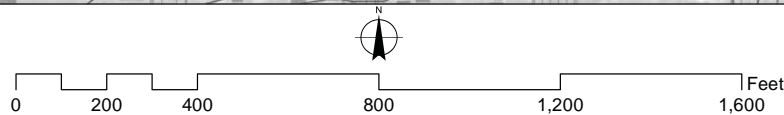
1. Misc. site work— planting, irrigation, soil	=		=	\$ 25,300
2. Honor Walls—stone clad CMU	=	230 sf x \$ 100	=	\$ 23,070
3. Arbor/lighting	=	280 sf x \$ 200	=	\$ 56,000
4. Wall Graphic Materials	=		=	\$ 30,000
		Subtotal	=	\$ 134,370
5. Contingency @ 10%	=		=	\$ 13,437
		Subtotal	=	\$ 147,807
6. CPRE Cost @ 35%	=		=	\$ 51,732
		Total	=	\$ 199,539

Note: All phases must work as stand along projects to allow for fundraising to occur.

# CAMPUS MAP



University of Oregon, East Campus  
Eugene, Oregon

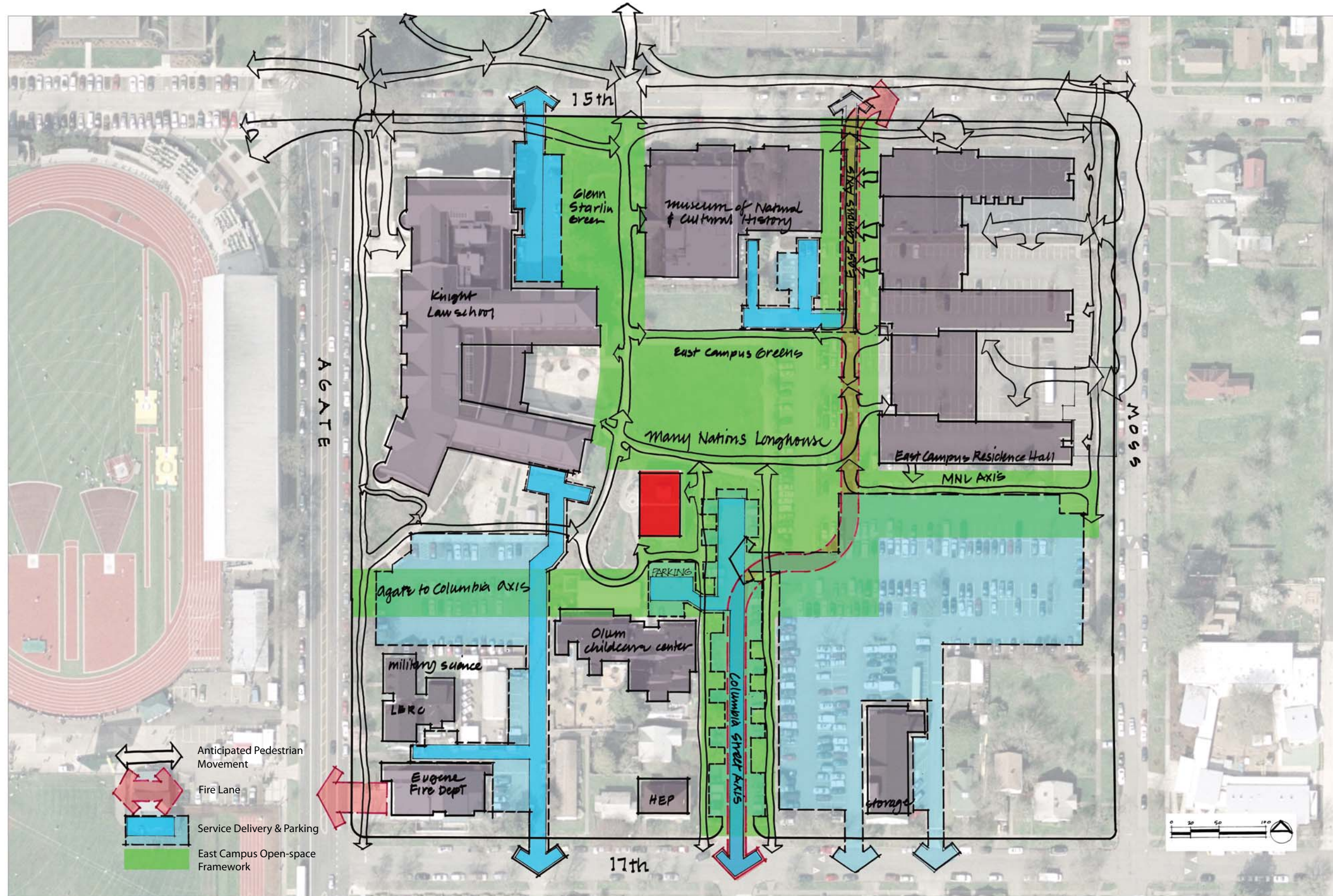


# F EAST CAMPUS AERIAL



Aerial Photo: University of Oregon  
Scale: NTS

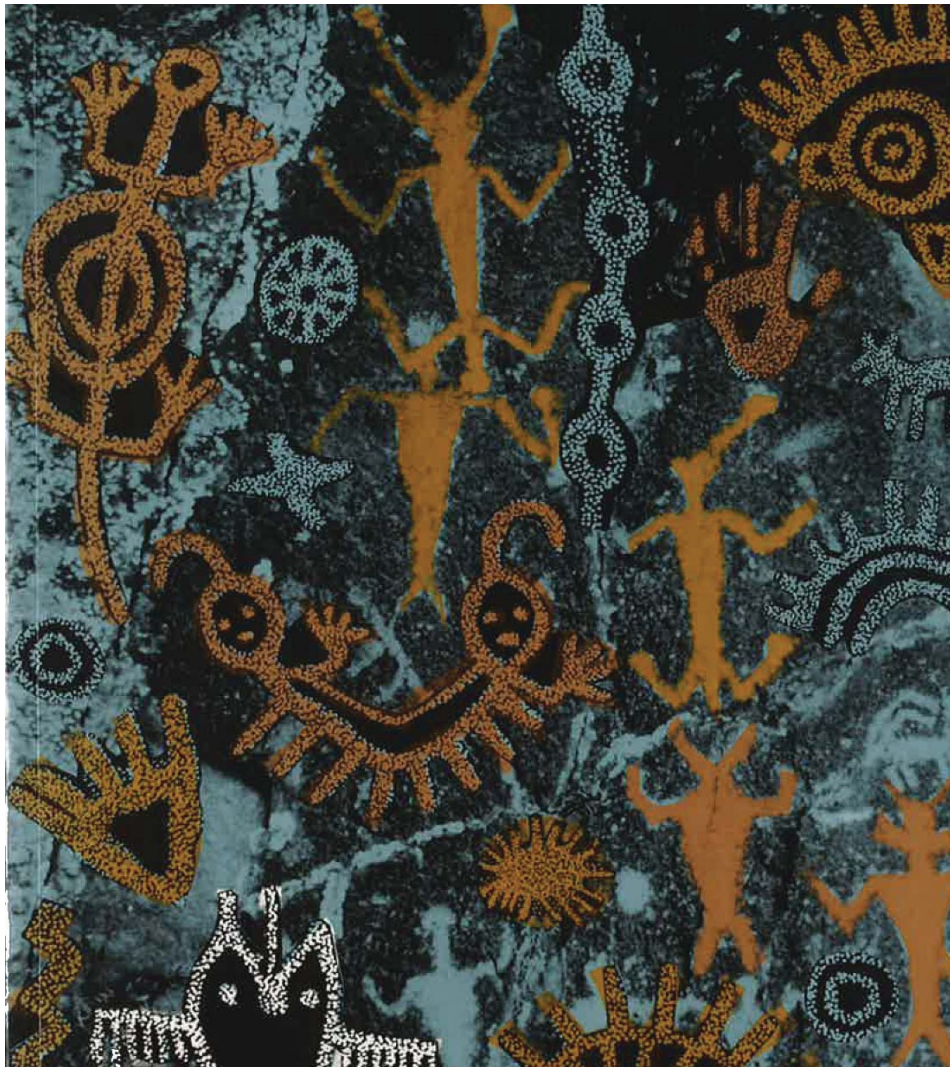
# G EXISTING CIRCULATION AND DEVELOPMENT



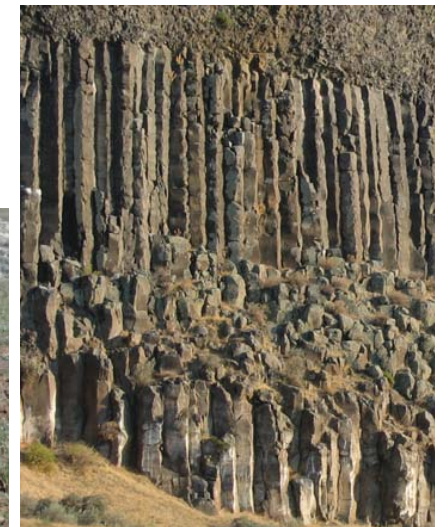








THE PLATEAU SEASONAL ROUND

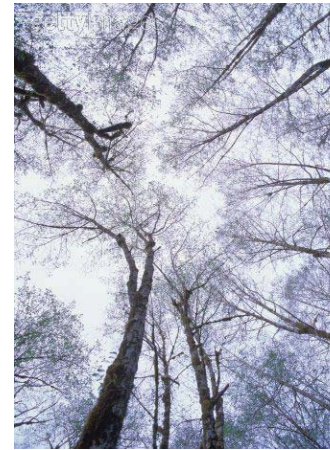
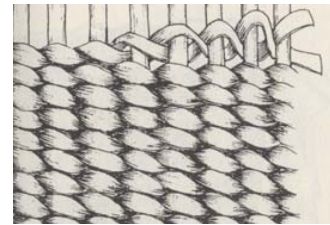


## PLATEAU



Many Nations Longhouse  
September 2010

JONES JONES  
ARCHITECTS  
LANDSCAPE ARCHITECTS  
PLANNERS

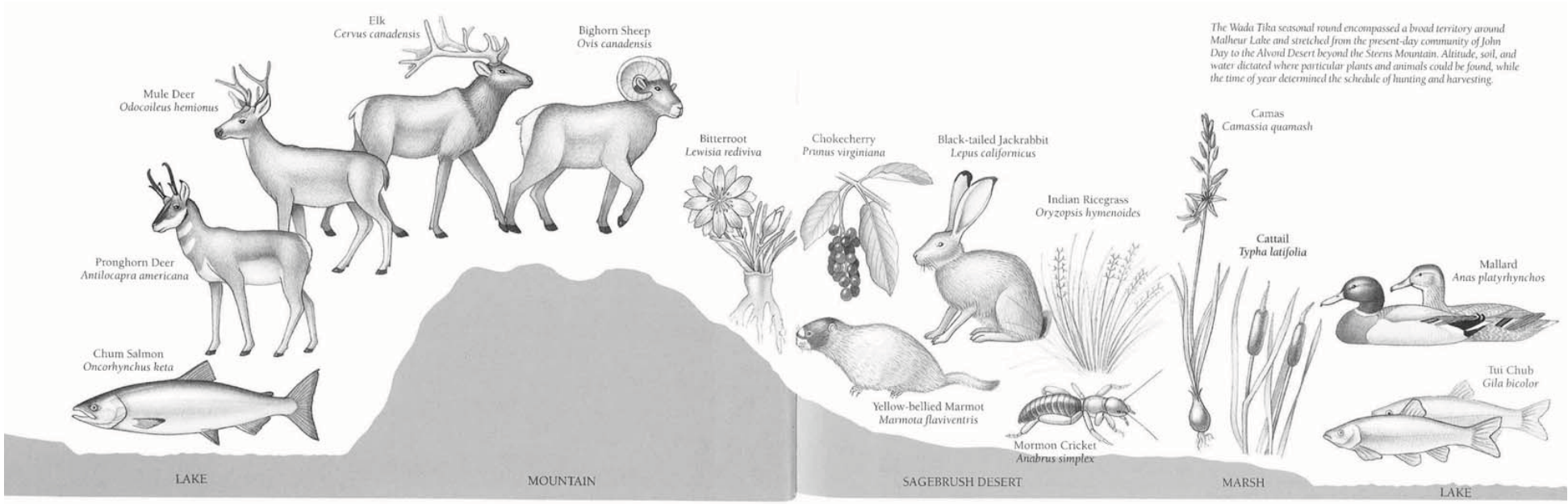
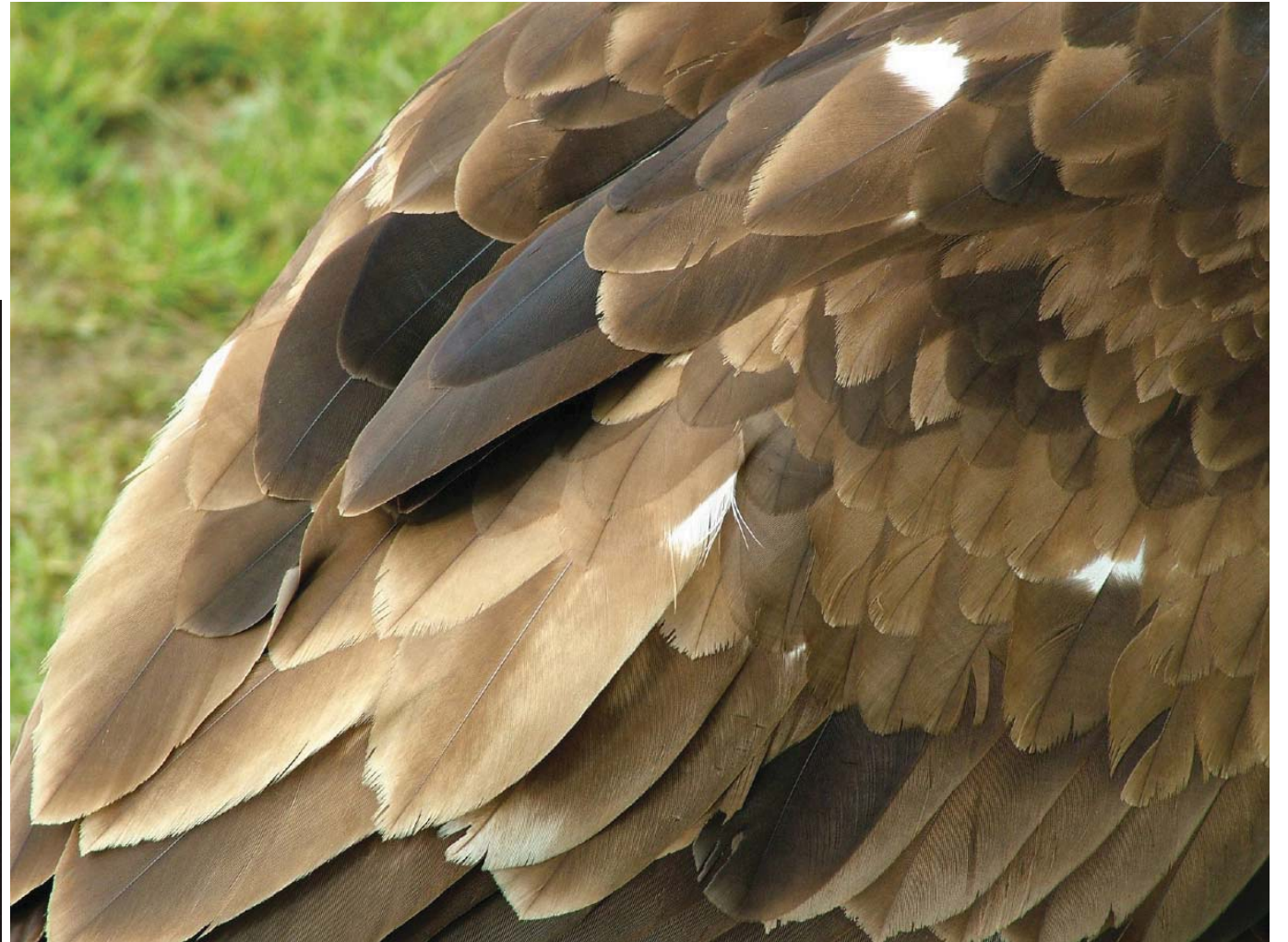


## COAST



Many Nations Longhouse  
September 2010

JONES JONES  
ARCHITECTS  
LANDSCAPE ARCHITECTS  
PLANNERS



# GREAT BASIN



Many Nations Longhouse  
September 2010

JONES JONES  
ARCHITECTS  
LANDSCAPE ARCHITECTS  
PLANNERS

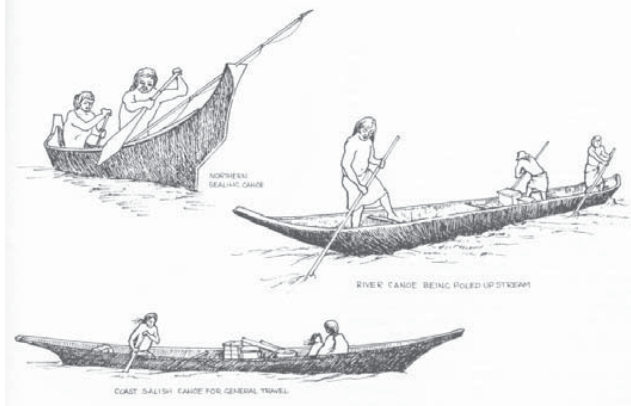


## INTERIOR VALLEY



Many Nations Longhouse  
September 2010

JONES JONES  
ARCHITECTS  
LANDSCAPE ARCHITECTS  
PLANNERS

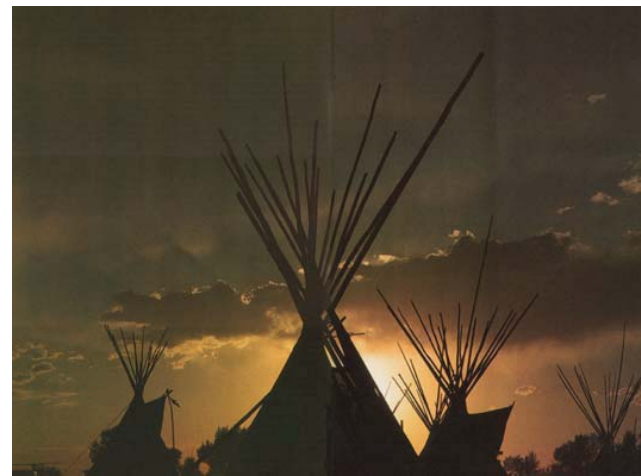


## STRUCTURES



Many Nations Longhouse  
September 2010

JONES JONES  
ARCHITECTS  
LANDSCAPE ARCHITECTS  
PLANNERS

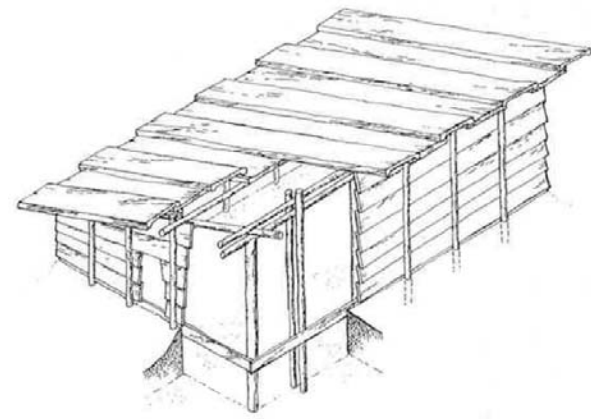
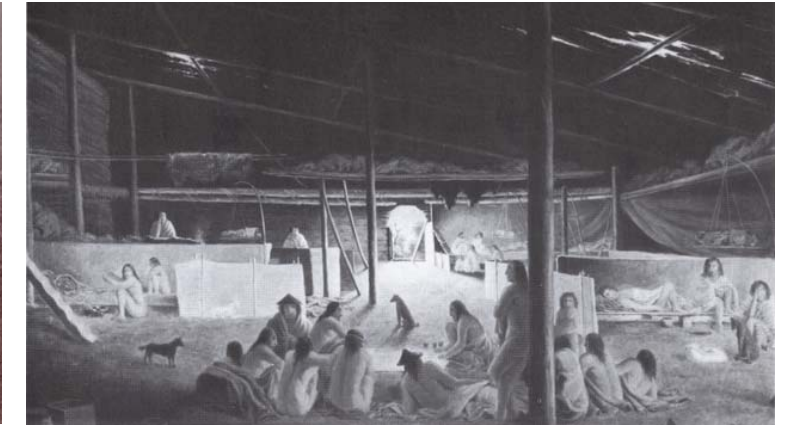


## EAST ARCHITECTURE



Many Nations Longhouse  
September 2010

JONES JONES  
ARCHITECTS  
LANDSCAPE ARCHITECTS  
PLANNERS

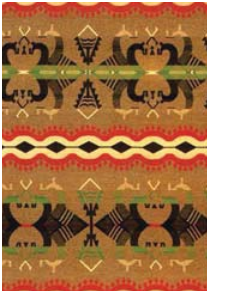


# WEST ARCHITECTURE



Many Nations Longhouse  
September 2010

JONES JONES  
ARCHITECTS  
LANDSCAPE ARCHITECTS  
PLANNERS



DIGGING STICK... OCCASIONALLY OF CEDAR, THOUGH GENERALLY OF A HARDER WOOD... USED BY WOMEN FOR DIGGING BULB ROOTS. NWC



# EAST CULTURE



Many Nations Longhouse  
September 2010

JONES JONES  
ARCHITECTS  
LANDSCAPE ARCHITECTS  
PLANNERS





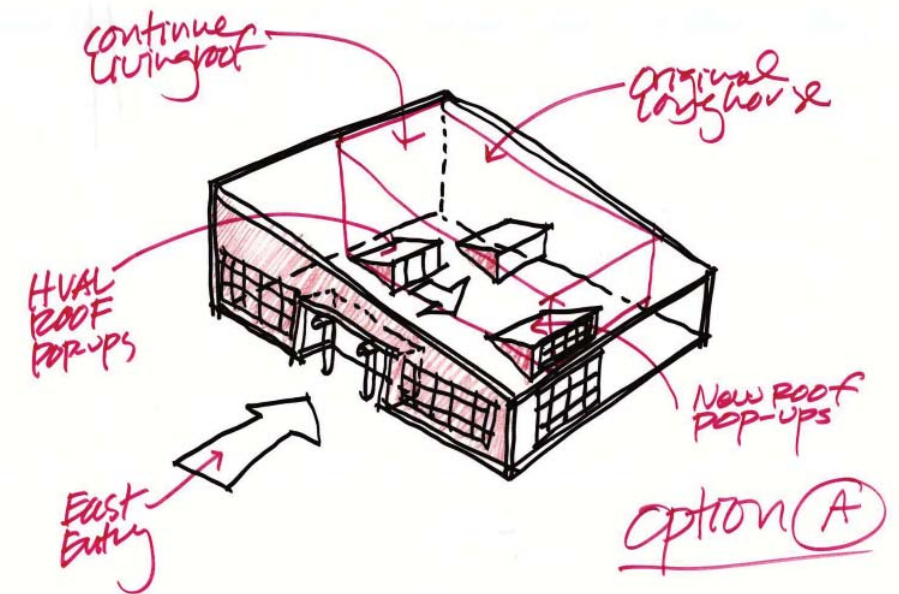
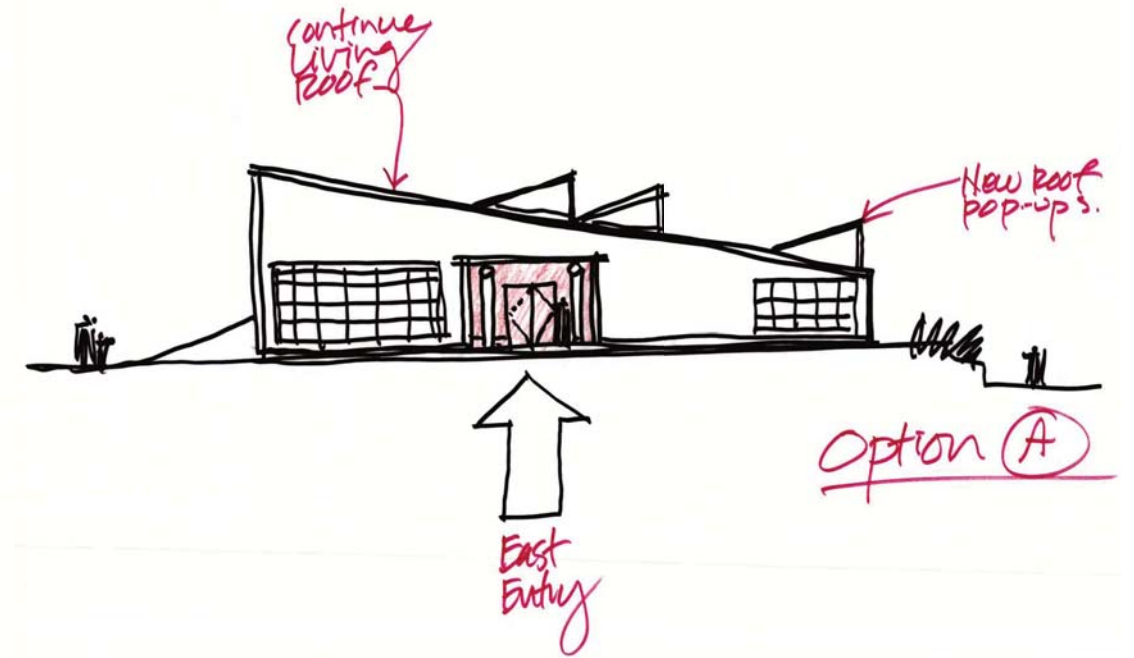
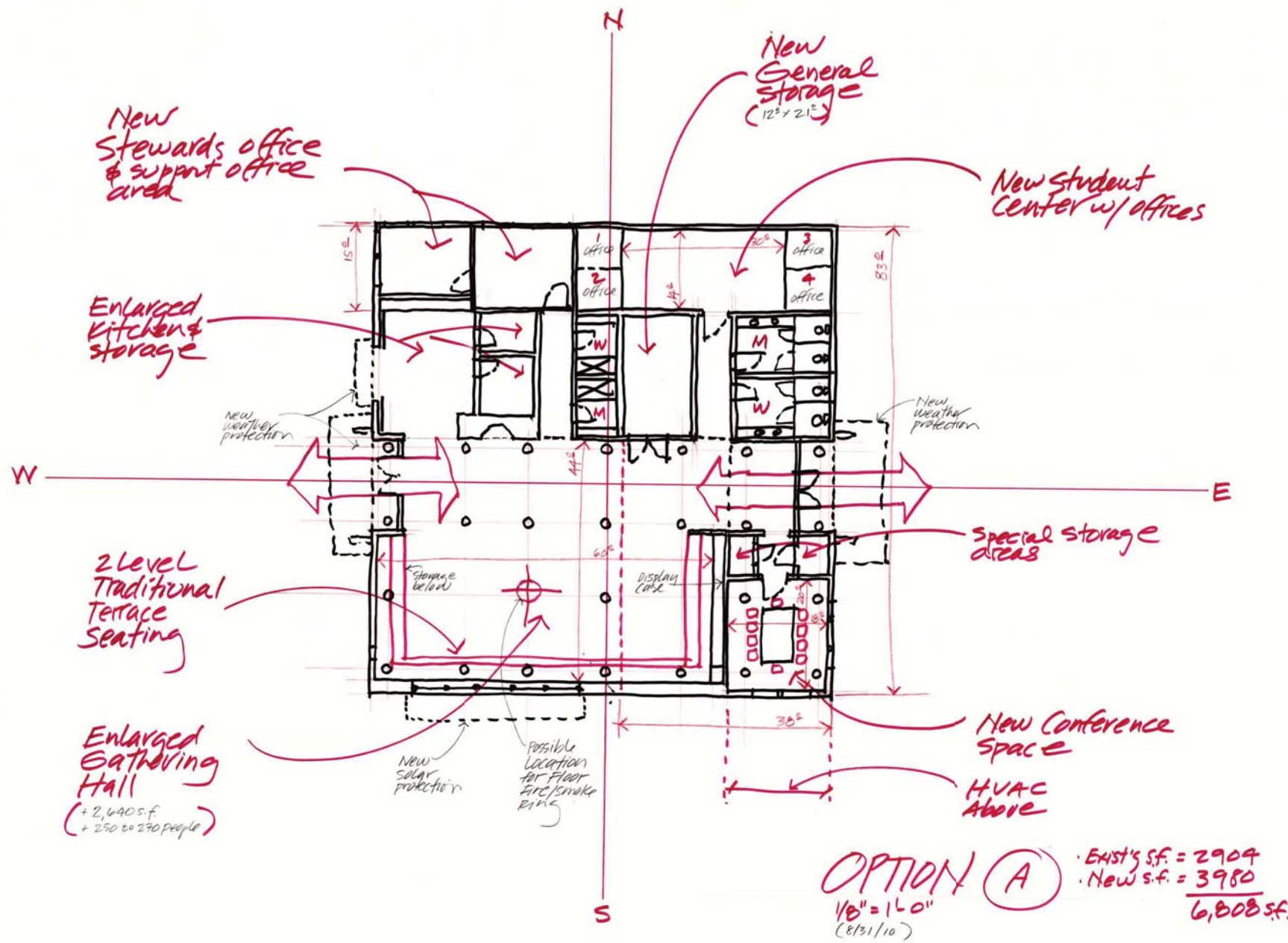
## WEST CULTURE



Many Nations Longhouse  
September 2010

JONES JONES  
ARCHITECTS  
LANDSCAPE ARCHITECTS  
PLANNERS

# APPENDIX- LONGHOUSE CONCEPT PLAN OPTIONS A-D

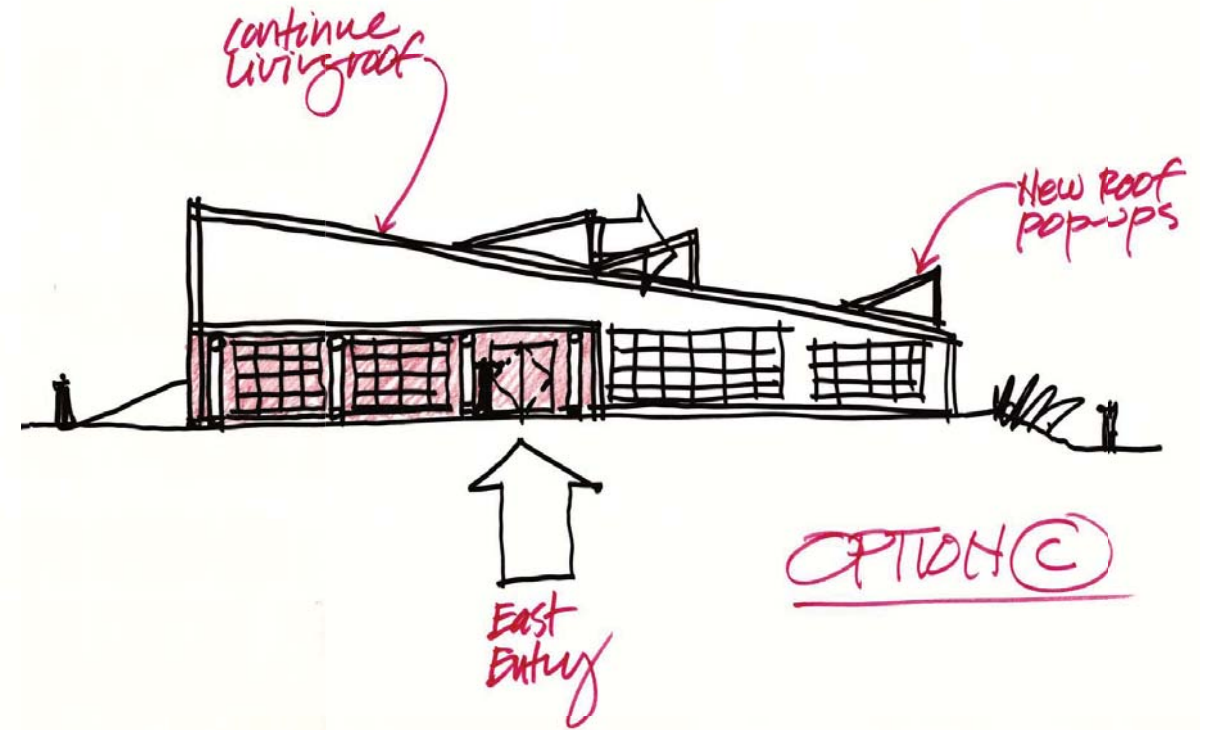
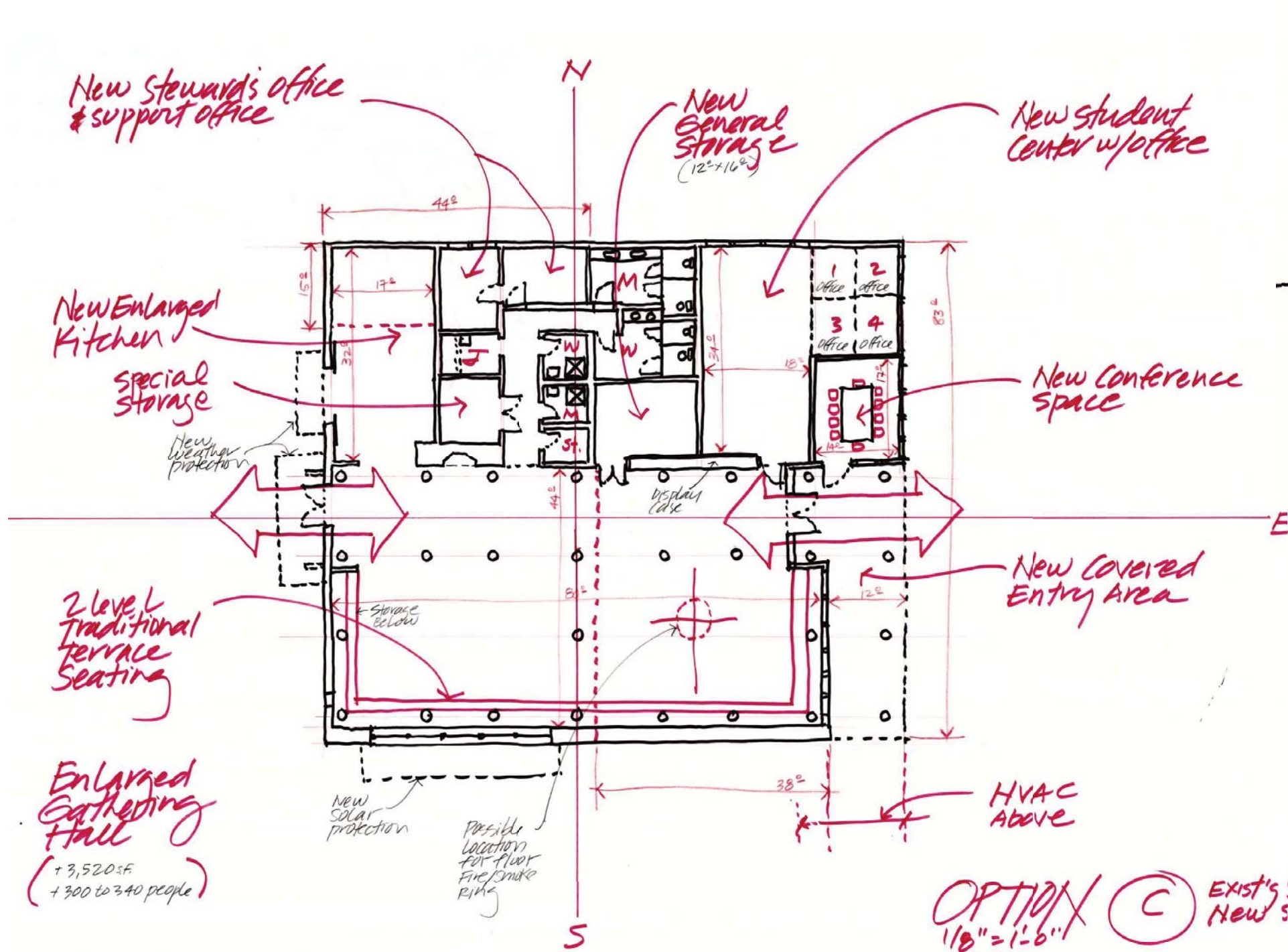


## LONGHOUSE CONCEPT PLAN - OPTION A

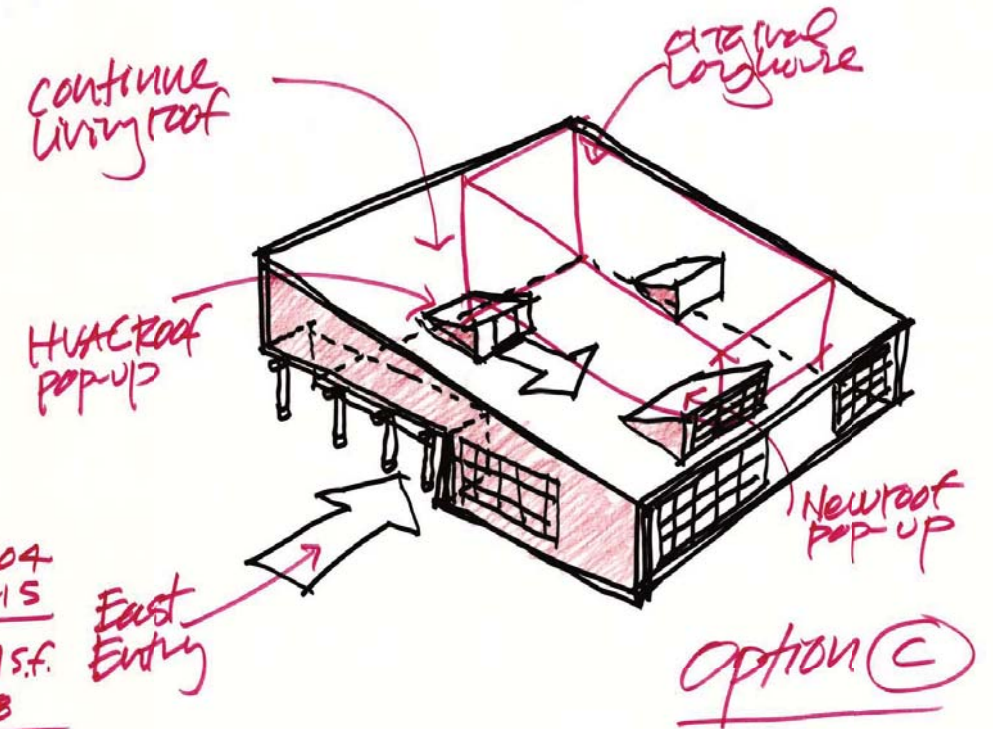
6,884 SQUARE FEET (EXISTING S.F.=2,904, NEW S.F. = 3,980)







OPTION C

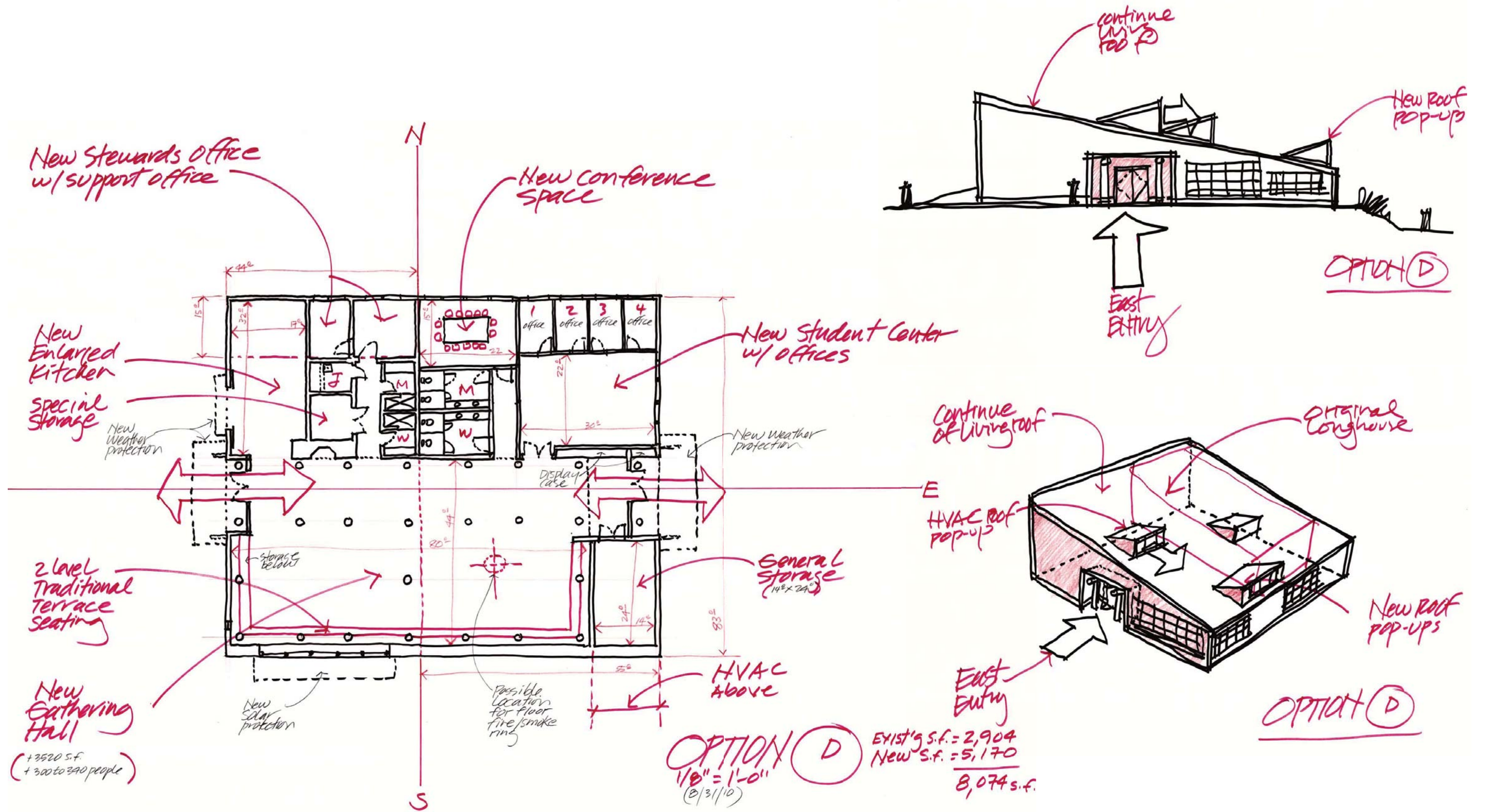


OPTION C  
 1/8" = 1'-6"  
 (2/31/10)

EXIST'S S.F. =	2,904
NEW S.F. =	4,415
	<u>7,319 S.F.</u>
COVERED AREA S.F. =	+ 528
	<u>7,847 S.F.</u>

**LONGHOUSE CONCEPT PLAN - OPTION C**  
 7,319 SQUARE FEET (EXISTING S.F.=2,904, NEW S.F. = 4,415)

SCALE: NTS

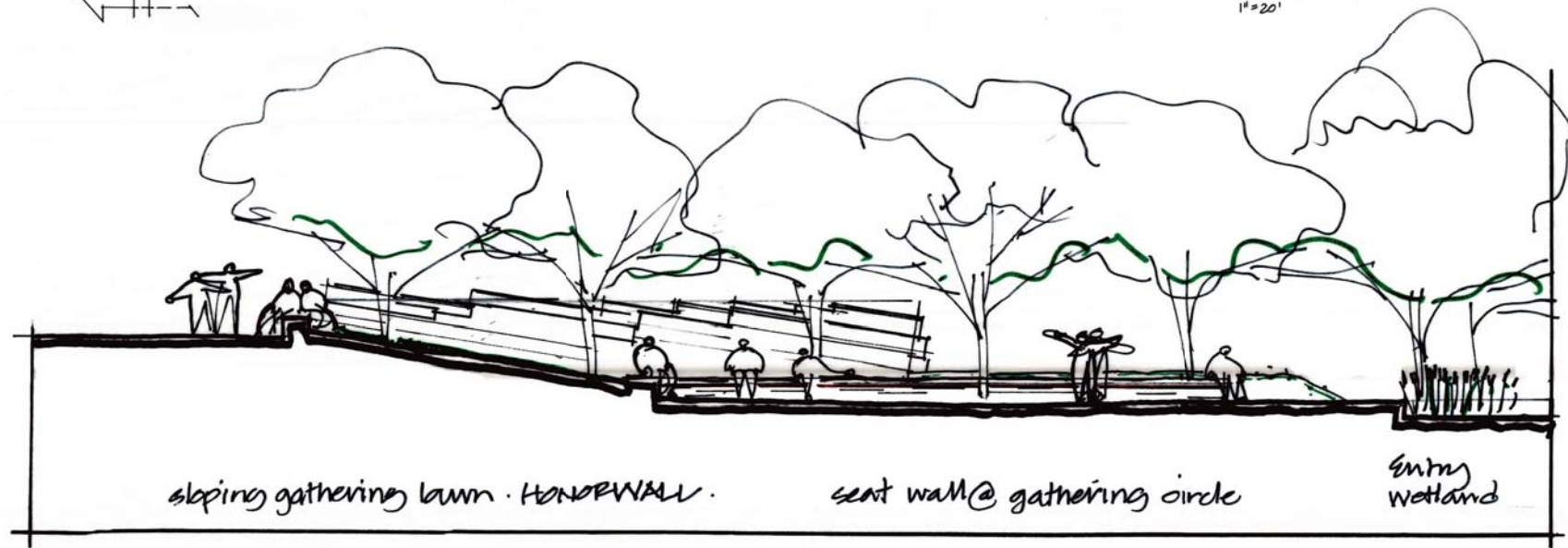
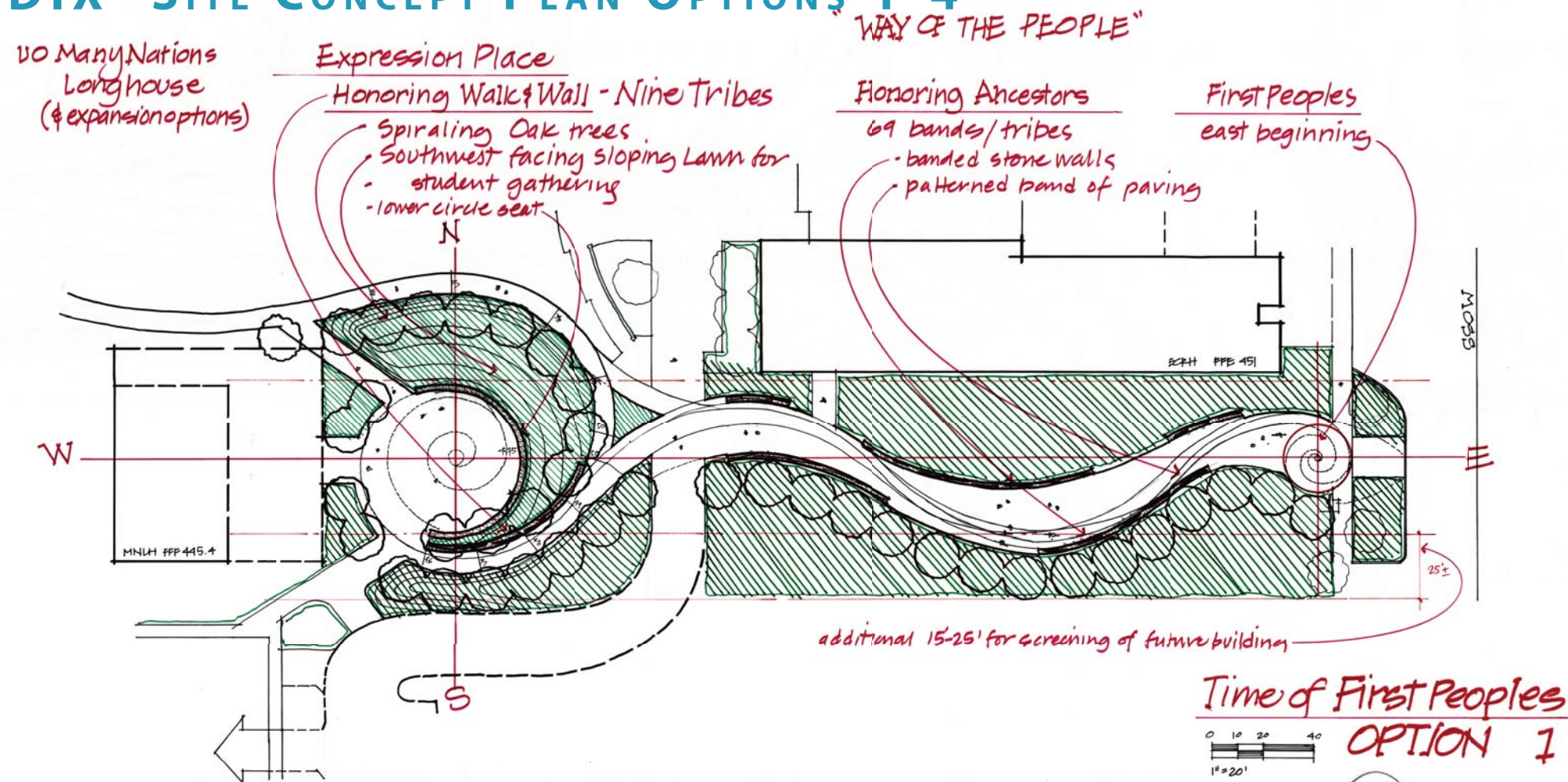


# LONGHOUSE CONCEPT PLAN - OPTION D

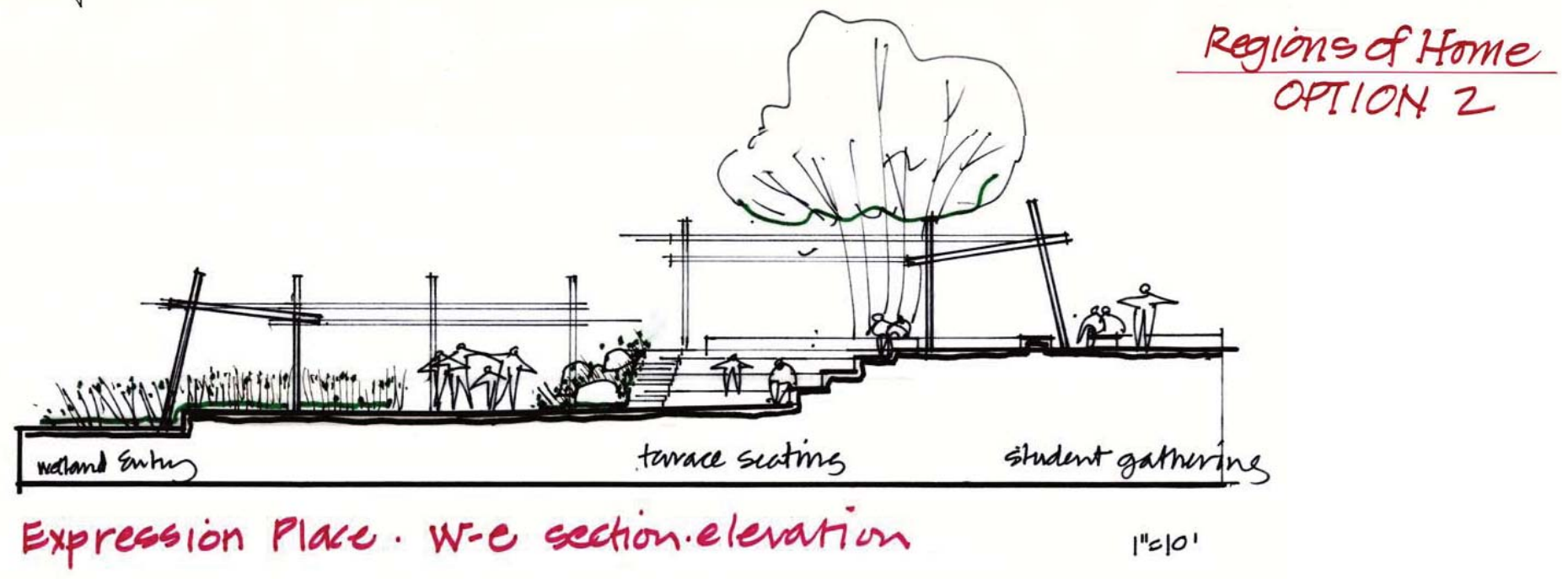
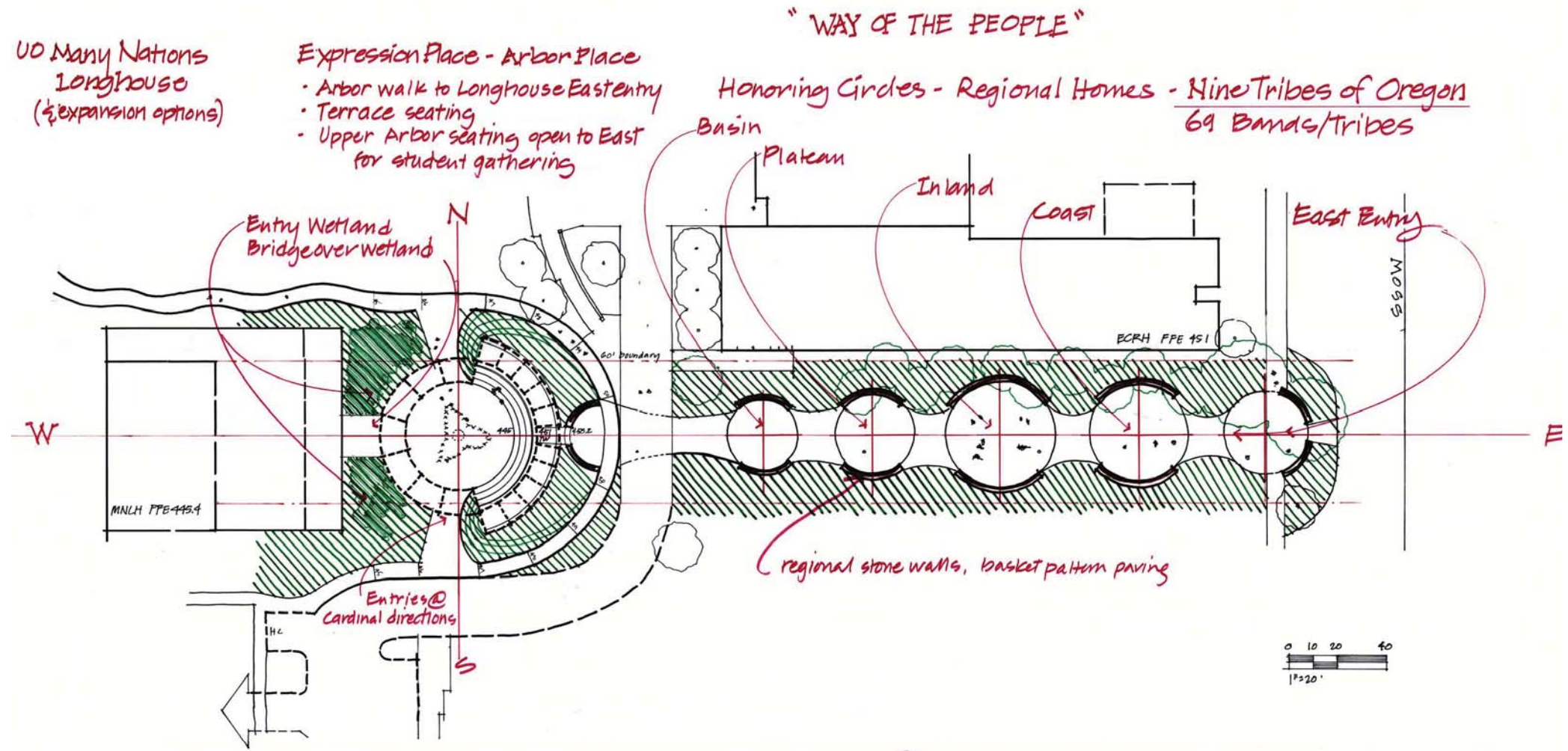
8,074 SQUARE FEET (EXISTING S.F.=2,904, NEW S.F. = 5,170)



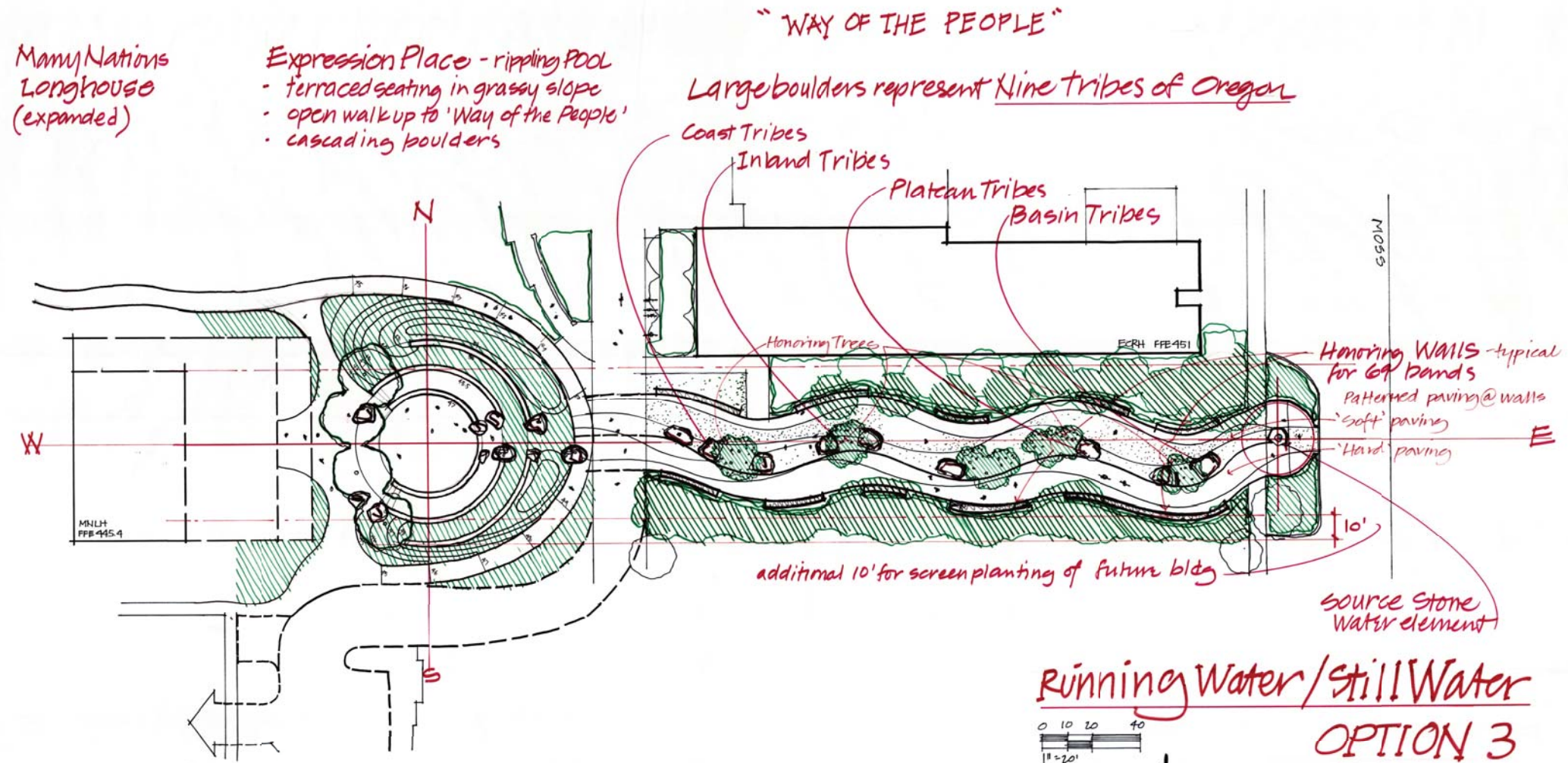
# APPENDIX- SITE CONCEPT PLAN OPTIONS 1-4



## SITE CONCEPT PLAN OPTION 1 - TIME OF FIRST PEOPLES



## SITE CONCEPT PLAN OPTION 2 - REGIONS OF HOME

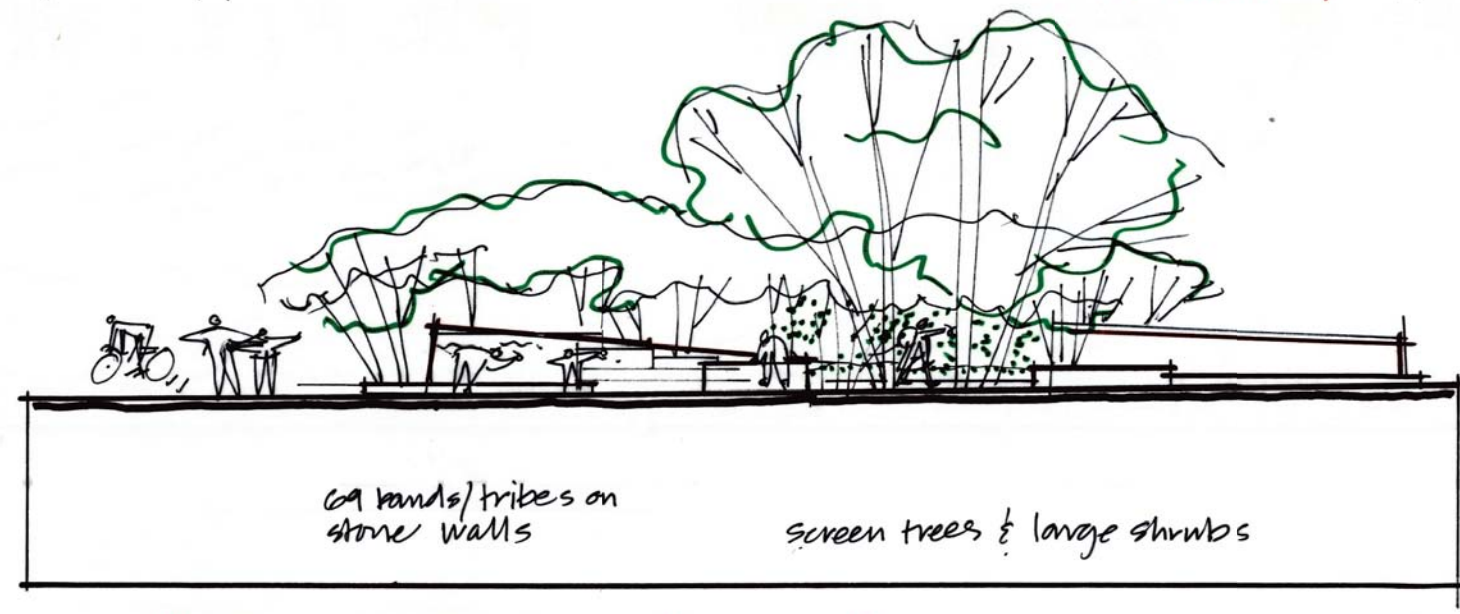
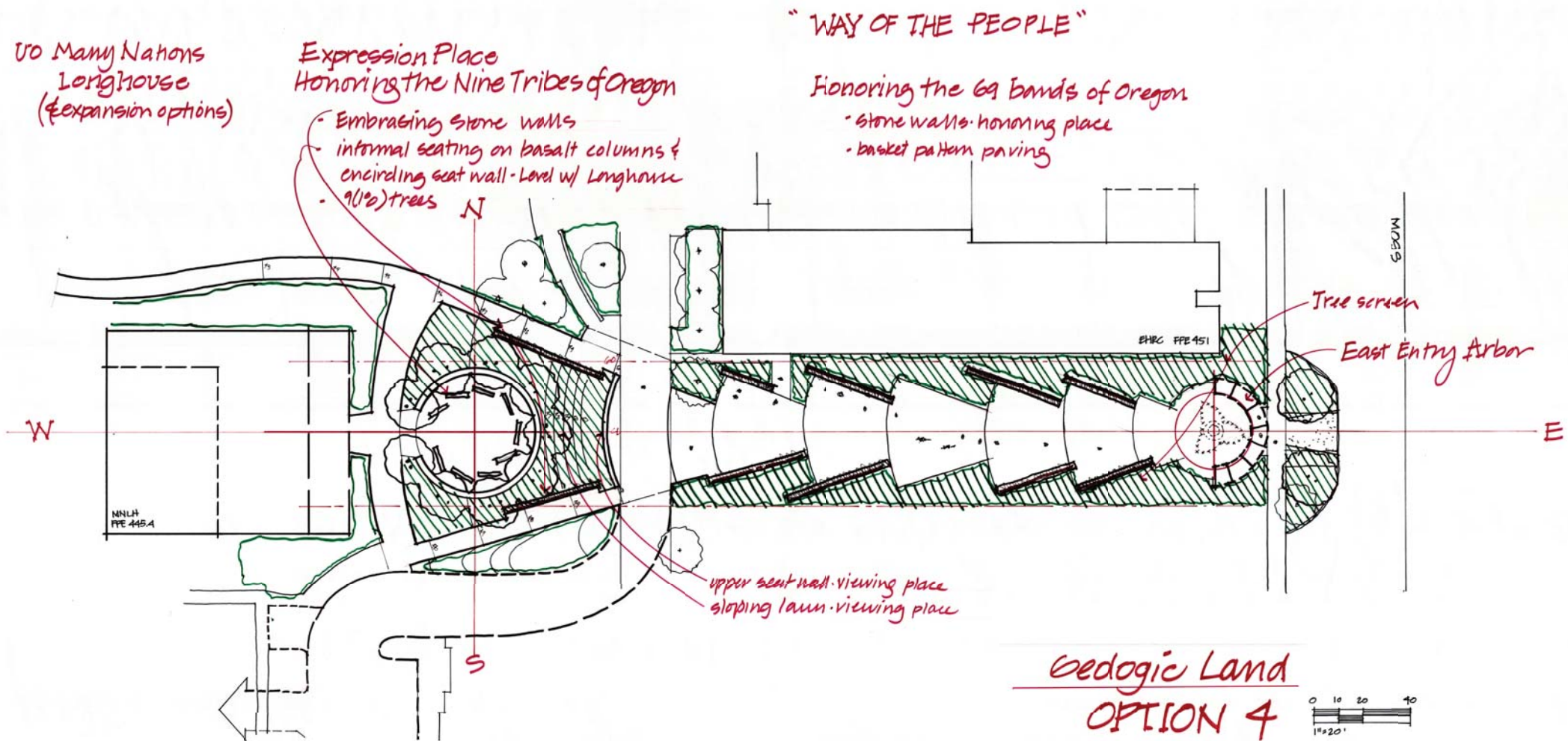


**Honoring Way. n-s section** 1" = 10'

**SITE CONCEPT PLAN OPTION 3 - RUNNING WATER / STILL WATER**







Honoring Way - w-e partial elevation

SITE CONCEPT PLAN OPTION 4 - GEOLOGIC LAND

## Federally Recognized Tribes of Oregon

BURNS PAIUTE TRIBE, CONFEDERATED TRIBES OF COOS, LOWER UMPQUA AND SIUSLAW, CONFEDERATED TRIBES OF GRAND RONDE, COMMUNITY OF OREGON, CONFEDERATED TRIBES OF SILETZ INDIANS OF OREGON, CONFEDERATED TRIBES OF THE UMATILLA INDIAN RESERVATION, CONFEDERATED TRIBES OF WARM SPRINGS INDIAN RESERVATION, COQUILLE INDIAN TRIBE, COW CREEK BAND OF UMPQUA INDIANS, KLAMATH TRIBES

THE NATIVE AMERICAN TRIBES THAT HAD TRADITIONAL AND CUSTOMARY BOUNDARIES THAT INCLUDED PART OF THE STATE OF OREGON OR WHICH HAD CEDED OR RESERVED LANDS WITHIN THE STATE OF OREGON:

CALIFORNIA: BENTON PAIUTE TRIBE, BIG BEND RANCHERIA, BIG LAGOON RANCHERIA, BLUE LAKE RANCHERIA, BRIDGEPORT INDIAN COLONY, CEDARVILLE RANCHERIA, FORT BIDWELL INDIAN TRIBE, HOOPA VALLEY TRIBE, KARUK TRIBE OF CALIFORNIA, LIKELY RANCHERIA, LOOKOUT RANCHERIA, LYTTON RANCHERIA, MELOCHUNDUM BAND OF TOLOWA INDIANS, MONTGOMERY CREEK RANCHERIA, PIT RIVER TRIBE, QUARTZ VALLEY INDIAN COMMUNITY, REDDING RANCHERIA, ROARING CREEK RANCHERIA, SMITH RIVER RANCHERIA, SUSANVILLE RANCHERIA, TOLOWA-TUTUNI TRIBE, WINNEMUCCA COLONY, XL RANCH; IDAHO: NEZ PERCE TRIBE OF IDAHO, SHOSHONI-BANNOCK TRIBES; NEVADA: DUCK VALLEY SHOSHONE-PAIUTE TRIBES, FALLON PAIUTE-SHOSHONE TRIBE, FORT McDERMITT PAIUTE-SHOSHONE TRIBE, LOVELOCK PAIUTE TRIBE, PYRAMID LAKE PAIUTE TRIBE, RENO-SPARKS INDIAN COLONY, SUMMIT LAKE PAIUTE TRIBE, WALKER RIVER PAIUTE TRIBE, WINNEMUCCA INDIAN COLONY, YERINGTON PAIUTE TRIBE; OKLAHOMA: MODOC TRIBE OF OKLAHOMA; WASHINGTON: CHEHALIS COMMUNITY COUNCIL, COLVILLE CONFEDERATED TRIBES, QUINALT INDIAN NATION, SHOALWATER BAY TRIBE, YAKAMA INDIAN NATION

*THE RIVER NEVER SEPARATED US*

*GORDON BETTLES*



*THANK YOU*



Image: Klamath Indians in Dugout Canoe / OrHi35789 - Oregon Historical Society